

La Crosse Area Planning Committee

RESOLUTION 5 – 2025

SUPPORTING THE *DESIGNATION OF THE MISSISSIPPI RIVER TRAIL WITHIN THE LIMITS OF LAPC'S METROPOLITAN PLANNING AREA (MPA), Version Two*

WHEREAS bicycle tourism is a growing industry in North America, contributing \$47 billion a year to the economies of communities that provide facilities for such tourists; and

WHEREAS the Mississippi River Trail is a national bicycle route, along the length of the Mississippi River, through ten states, from the headwaters at Lake Itasca to the Gulf of Mexico; and

WHEREAS the Mississippi River Trail was designated as one of only 16 National Millennium Trails which honor the past and imagine the future by preserving and commemorating major events and aspects of America's history and culture; and

WHEREAS the Mississippi River Trail provides access to and promotes the scenic, historic, archaeological, cultural, recreational and natural qualities of the Mississippi River and its amenities; and

WHEREAS the Mississippi River Trail is located primarily on the Wisconsin All-American Great River Road National Scenic Byway (WIS 35) between Prescott and Illinois State Line, but also routed on other state and county highways, local roads or alternative routes for bicycling; and

WHEREAS the Wisconsin Mississippi River Parkway Commission and the La Crosse Metropolitan Planning Organization, with the cooperation of the Wisconsin Department of Transportation, Wisconsin Department of Natural Resources and other stakeholders, have proposed a specific route to be designated as Mississippi River Trail; and

WHEREAS the Mississippi River Trail implements Wisconsin Statutes Chapters 1.11, 84.01(35), 84.60, and 85.02, 349.23 and Wisconsin Administrative Code Chapter Trans 400 which required that “due consideration to establishing bikeways and pedestrian ways in all new highway construction and reconstruction projects”; and

WHEREAS the Mississippi River Trail adds value to existing roads and trails; and

WHEREAS the Mississippi River Trail is largely ready to sign and market, and many suggested improvements are already planned; and

WHEREAS the Mississippi River Trail will contribute to sustainable economic development in 33 Wisconsin Mississippi River communities; and

WHEREAS the proposed route for the Mississippi River Trail comes through the La Crosse Metropolitan Planning Area and can therefore provide a benefit to our residents and businesses; and

WHEREAS the Mississippi River Trail will provide increased recreational and transportation choices for individuals to enjoy the outdoors as well as provide health, economic, and quality of life benefits; and

WHEREAS the Mississippi River Trail continues Wisconsin's tradition of honoring and enhancing the Mississippi River by offering multiple bicycling experiences, each in a unique river landscape; and

WHEREAS we have investigated the proposed route and found it to be a suitable route, and desire that the route be designated so that it can be mapped and signed, thereby promoting bicycle tourism in our area; and

WHEREAS the LAPC Policy Board approved Resolution 3-2024, Supporting the Designation of the Mississippi River Trail Within the Limits of LAPC Metropolitan Planning Area (MPA) on May 15, 2024; and

WHEREAS this resolution supports Version Two (2) of the MRT route and connection to the Minnesota-MRT within the limits of the MPA; and

THEREFORE, BE IT RESOLVED, that the La Crosse Metropolitan Planning Organization in order to receive full benefit of the Mississippi River Trail, hereby expresses its approval and support for the development of the Mississippi River Trail, and requests that the appropriate officials see to it that the route is officially designated along the following segments within the limits of the La Crosse Metropolitan Planning Area:

SOUTHBOUND: Great River State Trail from the north Metropolitan Planning Area (MPA) boundary south to the Great River Landing at the intersection of WIS 35/2nd Avenue South and WIS 157/Main Street, proceed east on WIS 157/Main Street to the intersection with 3rd Avenue South, turn right and continue south on 3rd Avenue South to the intersection with Oak Avenue South, continue straight and south on Oak Avenue South to the intersection with Oak Forest Drive, turn right and continue west on Oak Forest Drive to the intersection with WIS 35/2nd Avenue South, continue west through the intersection and turn left to enter the multi-use path along the west side of WIS 35, continue south on the multi-use path along the west side of WIS 35 to the intersection with Livingston Street, turn left and continue east on Livingston Street to the intersection with Avon Street, turn right and continue south on Avon Street to the intersection with Monitor Street, turn left and continue east on Monitor Street approximately 500-feet to the intersection with the Jim Asfoor, La Crosse River Marsh Trail, turn right and continue southwest on the Jim Asfoor, La Crosse River Marsh Trail to the intersection with the Vietnam Veterans, La Crosse River Marsh Trail, turn right and continue west on the Vietnam Veterans, La Crosse River Marsh Trail to the intersection with Veterans Memorial Drive, turn right and continue south on Veterans Memorial Drive to the intersection with La Crosse River Walk, turn right and continue south on La Crosse River Walk to the intersection with Front Street/King Street, stay straight and continue east on King Street to the intersection with 2nd Street, turn right and continue south on 2nd Street to the intersection with Market Street, turn right on Market Street and continue west on Market Street until it ends, stay straight and continue south on Houska Park Trail to the intersection with Marco Drive, turn left and continue east on the trail/bridge to the intersection with Cook Street, turn right and continue south and east on the trail until the trail splits, turn right and continue east on the trail to the intersection with Maple Street, stay straight and continue east on Maple Street to the intersection with West Avenue, turn right and continue south on West Avenue to the intersection with Bennett Street, turn left and continue east on Bennett Street to the intersection with 13th Street, turn right and continue south on 13th Street to the intersection with Chase Street/Riverside Drive, stay straight and continue south on Riverside Drive to the intersection with Thompson Street, turn left and continue east on Thompson Street to the intersection with 15th Street, turn right and continue south on 15th Street to the intersection with Gladys Street, turn slight left and continue south and east on Gladys Street to the

intersection with East Avenue, turn right and continue south on East Avenue to the intersection with Shelby Road, stay straight and continue south on East Avenue/Bank Drive to the intersection with East Burr Oak Street, turn left and continue east on East Burr Oak Street to the intersection with Markle Road, turn right and continue south on Markle Road to the intersection with South Richard Drive, turn left and continue east on South Richard Drive to the intersection with Robin Hood Drive, turn right and continue southeast on Robin Hood Drive to the intersection with Nottingham Avenue, turn right and continue south on Nottingham Avenue to the intersection with Scarlett Drive, turn left and continue east on Scarlett Drive to the intersection with Regional Route 1/Pammel Creek Bridge, turn right and continues south on Regional Route 1/Pammel Creek Bridge to the intersection with Rivercrest Drive North, turn left and continue south on Rivercrest Drive North to the intersection with 33rd Street South, turn left and continue east on 33rd Street South to the intersection with WIS 35/Mormon Coulee Road, turn right on the multi-use path along the west side of WIS 35/Mormon Coulee Road and continue south on the multi-use path to the intersection with County Trunk Highway (CTH) GI, stay straight and continue south on WIS 35 to the south MPA boundary.

NORTHBOUND: WIS 35 from the south MPA boundary north to the intersection with CTH GI, stay straight and continue north on the multi-use path along the west side of WIS 35/Mormon Coulee Road to the intersection with 33rd Street South, turn left and continue west on 33rd Street South to the intersection with Rivercrest Drive North, turn right and continue north on Rivercrest Drive North to the intersection with Regional Route 1/Pammel Creek Bridge, turn right and continue north on Regional Route 1/Pammel Creek Bridge to the intersection with Scarlett Drive, turn left and continue west on Scarlett Drive to the intersection with Nottingham Avenue, turn right and continue north on Nottingham Avenue to the intersection with Robin Hood Drive, turn left and continue northwest on Robin Hood Drive to the intersection with South Richard Drive, turn left and continue west on South Richard Drive to the intersection with Markle Road, turn right and continue north on Markle Road to the intersection with East Burr Oak Street, turn left and continue west on East Burr Oak Street to the intersection with Bank Drive, turn right and continue north on Bank Drive/East Avenue South to the intersection with Shelby Road, stay straight and continue north on East Avenue to the intersection with Gladys Street, turn left and continue north and west on Gladys Street to the intersection with 15th Street, turn slight right and continue north on 15th Street to the intersection with Thompson Street, turn left and continue west on Thompson Street to the intersection with Riverside Drive, turn right and continue north on Riverside Drive to the intersection with Chase Street/13th Street, stay straight and continue north on 13th Street to the intersection with Bennett Street, turn left and continue west on Bennett Street to the intersection with West Avenue, turn right and continue north on West Avenue to the intersection with Maple Street, turn left and continue west on Maple Street until it ends, stay straight and continue west on the trail until the trail splits, turn left and continue north and west on the trail to the intersection with Cook Street, turn left and continue west on the trail/bridge to the intersection with Marco Drive, turn right and continue north on Houska Park Trail to the intersection with Market Street, stay straight and continue east on Market Street to the intersection with 2nd Street, turn left and continue north on 2nd Street to the intersection with King Street, turn left and continue west on King Street to the intersection with Front Street/La Crosse River Walk, turn right and continue north on La Cross River Walk to the intersection with Veterans Memorial Drive, turn left and continue north on Veterans Memorial Drive to the intersection with Vietnam Veterans, La Crosse River Marsh Trail, turn left and continue east on Vietnam Veterans, La Crosse River Marsh Trail to the intersection with the Jim Asfoor, La Crosse River Marsh Trail, turn left and continue northeast on the Jim Asfoor, La Crosse River Marsh Trail to the intersection with Monitor Street, turn left and continue west on Monitor Street to the intersection with Avon Street, turn right and continue north on Avon Street to the intersection with Livingston Street, turn left and continue west on Livingston Street to the intersection with WIS 35, cross

WIS 35 to the multi-use path along the west side of WIS 35, turn right on the multi-use path along the west side of WIS 35 and continue north on the path to the intersection with Oak Forest Drive, turn right and continue east on Oak Forest Drive to the intersection with Oak Avenue South, turn left and continue north on Oak Avenue South to the intersection with 3rd Avenue South, continue straight and north on 3rd Avenue South to the intersection with WIS 157/Main Street, turn left and continue west on WIS 157/Main Street to the intersection with WIS 35/2nd Avenue South, proceed west to the Great River Landing on the west side of this intersection, turn right and continue north on the Great River State Trail to the north MPA boundary.

CONNECTION TO MN-MRT (connections #1-2 are in Pierce County, connections #3-4 are in Buffalo County):

#5 La Crosse County/City of La Crosse (near La Crescent, MN):

Eastbound (from MN-MRT): From Minnesota state line on US 14, proceed east on US 14/Wagon Wheel Trail to the intersection with US 53/61/3rd Street, take right on US 14 East/US 61 South/3rd Street and proceed south to the intersection with Division Street, take right on Division Street and proceed west to the intersection with 2nd Street/WI-MRT.

Westbound (from WI-MRT): From the intersection of WI-MRT/2nd Street/King Street, proceed east on King Street to the intersection with US 14/53/61 and 3rd Street, take right and proceed south on 3rd Street to the intersection with US 14 East/US 61 South/WIS 16 East & Cameron Street, take right and proceed on south shoulder of US 14/Wagon Wheel Trail to the Minnesota state line.

(See attached map)

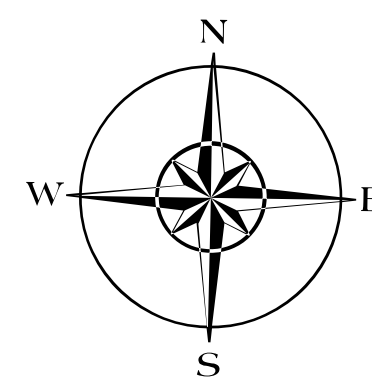
LA CROSSE AREA PLANNING COMMITTEE

Patrick Barlow, Chair

Bob Gollnik, Executive Director
Dated: July 16, 2025

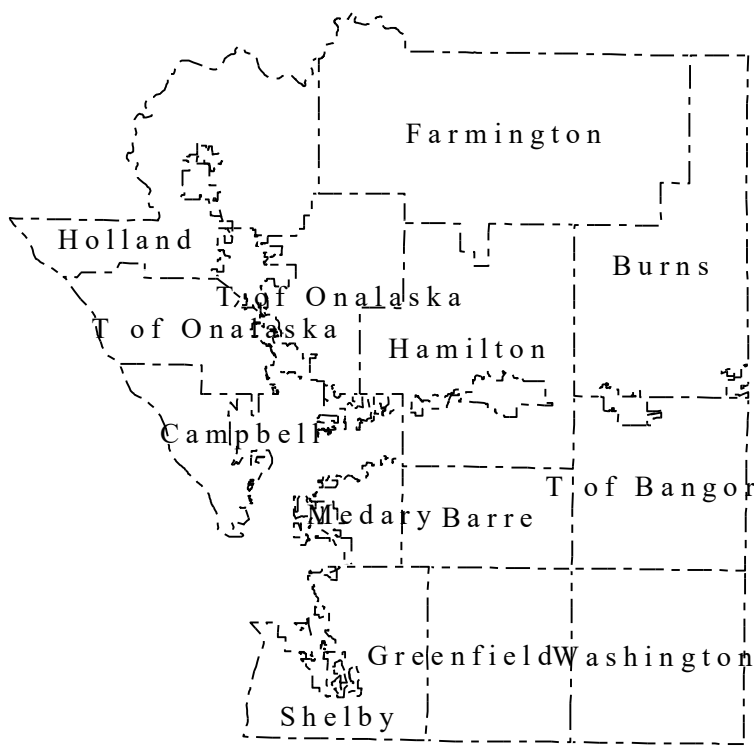
WISCONSIN DEPARTMENT OF TRANSPORTATION

LA CROSSE
County

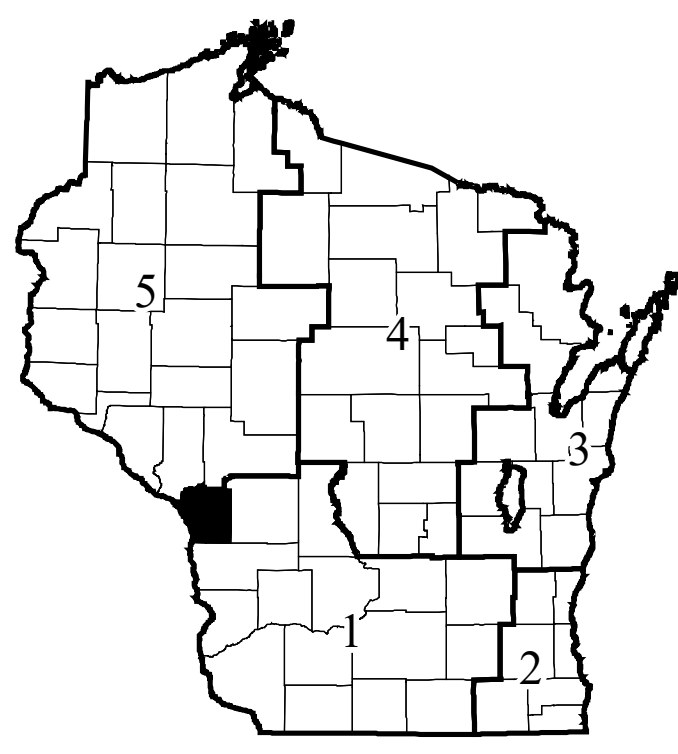


	DATE	COUNTY TRUNKS	COUNTY OTHER ROADS	COUNTY TRUNK HIGHWAY & OTHER COUNTY ROADS Certified in accordance with sec. 90.302 Wis. stat.	
				Signature	Date
(1)	4-1-20	281.02	00.00		
(2)	1-1-21	-	-		
(3)	4-1-21	-	-		

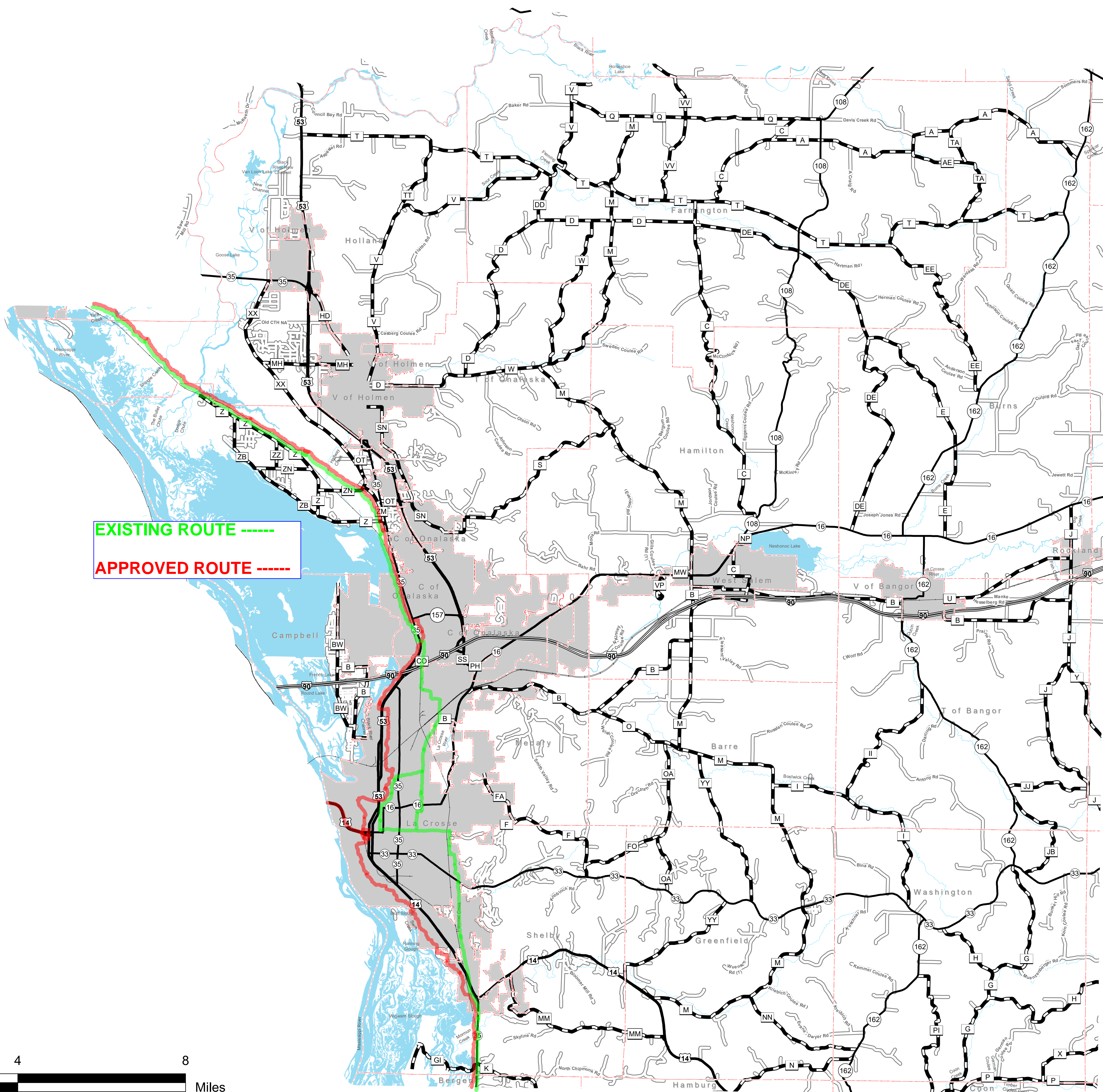
- (1) THIS DATA REPRESENTS THE LAST CERTIFIED MILEAGE AS CORRECTED BY THE HIGHWAY REGION.
(2) THE COUNTY HIGHWAY COMMISSIONER IS TO FILL IN THE MILEAGE TO BE CERTIFIED AS OPEN TO THE PUBLIC AS OF THE FOLLOWING JANUARY, INCLUDING THE NEW CHANGES THAT ARE MADE ON THE PLAT.
(3) THIS DATA REPRESENTS MILEAGE ADJUSTMENTS MADE BY THE D.O.T. REGION DUE TO FIELD VERIFICATION, INVENTORY, ANNEXATION, ETC.



Civil Towns

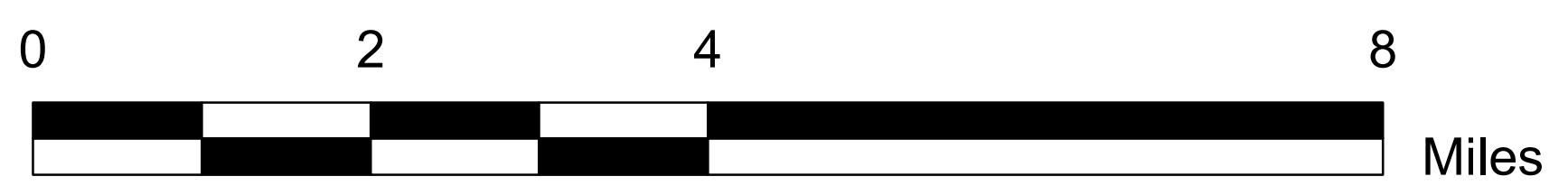


Regions



Legend

- Interstate
US Highway
State Road
County Road
Town Road
Railroad
Civil Town Border



The information contained on this map was created for the official use of the Wisconsin Department of Transportation (WisDOT). Any other use without the express written permission of the Wisconsin Department of Transportation is prohibited. The user assumes all liability for any errors or omissions in the information for other than official WisDOT business.

STATE OF WISCONSIN
WISCONSIN DEPARTMENT OF TRANSPORTATION
TOWN PLAT RECORD

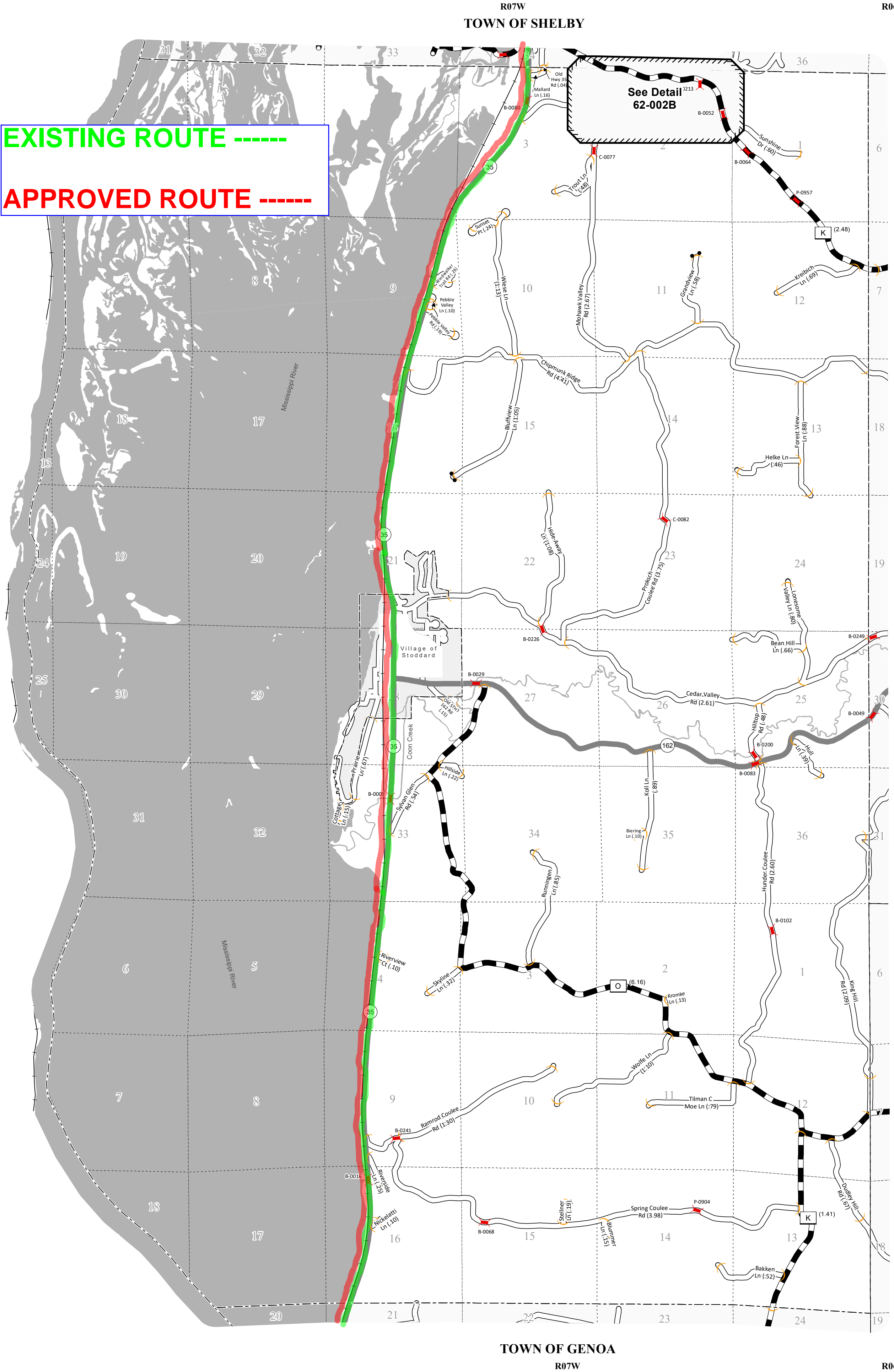
62-002A

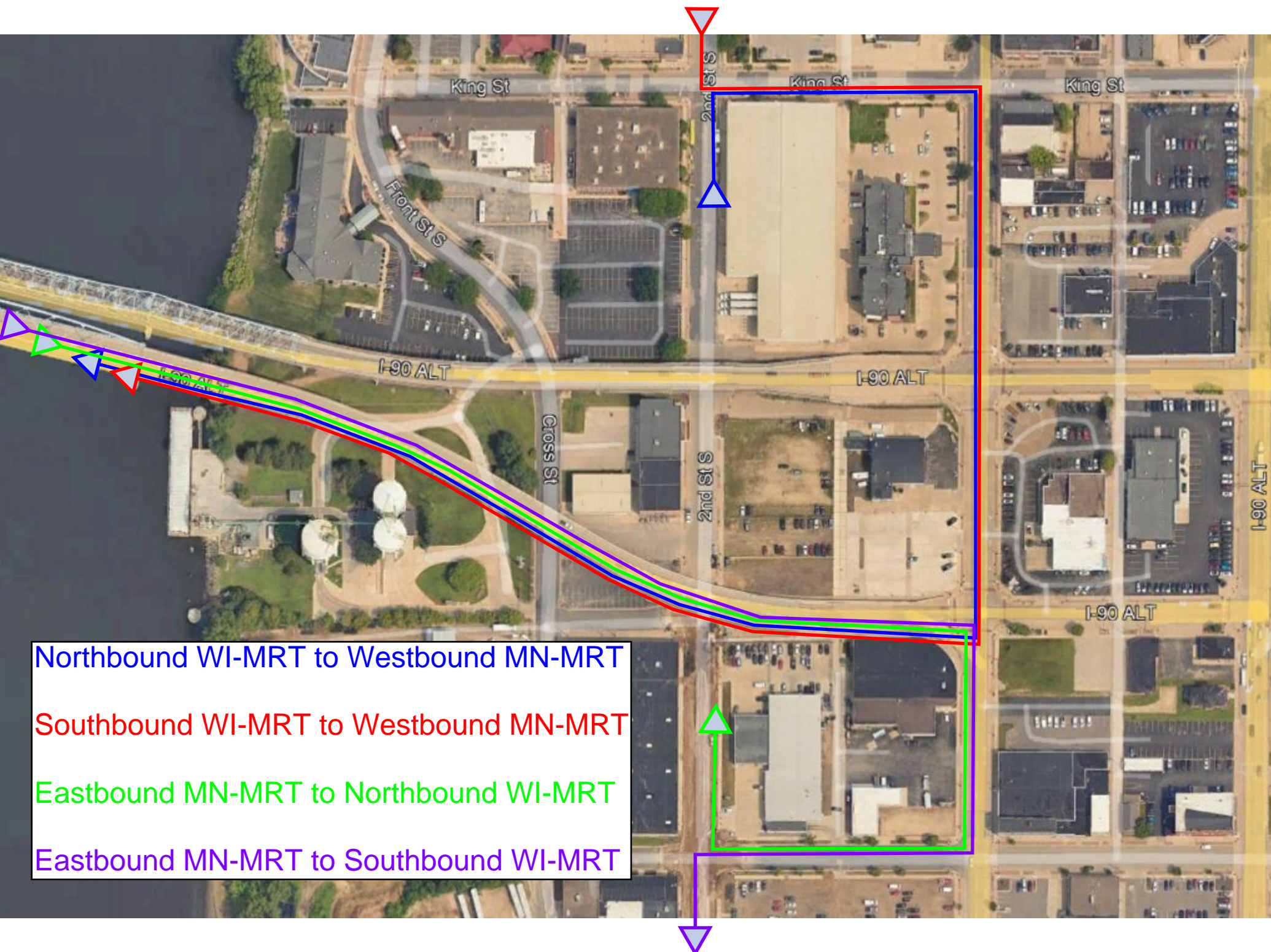
TOWN OF
BERGEN
COUNTY: VERNON

	DATE	MILEAGE FOR LOCAL ROADS/STREETS	LOCAL ROADS/STREETS	
			Certified in accordance with sec. 86.30 Wis. stat.	
(1)	4-1-20	44.79	Name:	Title:
(2)	1-1-21	.		
(3)	4-1-21	.		
			Signature:	Date:

- (1) THIS DATA REPRESENTS THE LAST CERTIFIED MILEAGE AS CORRECTED BY WISDOT WHICH MAY HAVE BEEN USED FOR PAST TRANSPORTATION AIDS.
- (2) THE TOWN CHAIRMAN OR CITY/VILLAGE CLERK IS TO FILL IN THE MILEAGE TO BE CERTIFIED AS OPEN TO THE PUBLIC AS OF THE FOLLOWING JANUARY, INCLUDING THE NEW CHANGES THAT ARE MADE ON THE PLAT.
- (3) THIS DATA REPRESENTS MILEAGE ADJUSTMENTS MADE BY WISDOT DUE TO FIELD VERIFICATION, INVENTORY, ANNEXATION, ETC. TRANSPORTATION AID PAYMENTS MAY BE MADE BASED ON THIS FIGURE.

MILEAGE FOR COUNTY TRUNKS	MILEAGE FOR COUNTY OTHER ROADS
10.05	00.00





Northbound WI-MRT to Westbound MN-MRT

Southbound WI-MRT to Westbound MN-MRT

Eastbound MN-MRT to Northbound WI-MRT

Eastbound MN-MRT to Southbound WI-MRT