



LA CROSSE AREA PLANNING COMMITTEE

METROPOLITAN PLANNING ORGANIZATION

SERVING THE LA CROSSE (WI)/LA CRESCENT (MN) URBANIZED AREA

LA CROSSE COUNTY NOTICE OF MEETING

COMMITTEE OR BOARD:	LA CROSSE AREA PLANNING COMMITTEE	
DATE OF MEETING:	Wednesday, July 16, 2025	
MEETING PLACE:	ROOM 1107 ADMINISTRATIVE CENTER 212 6TH STREET N, LA CROSSE, WI 54601 THE MEETING WILL BE HELD IN PERSON WITH THE OPTION TO ATTEND VIRTUALLY VIA TEAMS – SEE MEETING ACCESS/MONITORING INSTRUCTIONS DETAILED BELOW	
TIME OF MEETING:	4:30 P.M.	
PURPOSE OF MEETING:	July Policy Board Meeting	
	Item	Action
1.	Call to Order and Roll Call	
2.	Public comment (5 minutes time limit per comment)	
3.	Approval of minutes of the May 21, 2025, LAPC Meeting	Approve
4.	Approval of minutes of the June 17, 2025, LAPC Special Meeting	Approve
5.	Approval of LAPC Bylaw Amendment: Article IV Officers – <i>Resolution 4-2025</i>	Approve
6.	Nomination of LAPC Chair/Vice Chair	Approve
7.	Approval of Updated Resolution of Support for the Mississippi River Trail – <i>Resolution 5-2025</i>	Approve
8.	Approval to amend the 2025-2028 Transportation Improvement Program (TIP) – <i>Resolution 6-2025</i>	Approve
9.	Approval of the 2026-2029 Minnesota Transportation Improvement Program (TIP) List – <i>Resolution 7 -2025</i>	Approve
10.	Discuss MTP Update Strategic Goals and 2026 UPWP Priorities (handout)	Information
11.	Evaluate E-TIP opportunity and funding (handout)	Approve
12.	Director and Staff Report (attached)	Information
13.	Member Updates or Requests	Information
14.	Next Regular Meeting of LAPC: Wednesday, September 18, 2025	Information
15.	Adjourn	Approve

Public Access: Any person may access/monitor the meeting utilizing options on the following page.



LA CROSSE AREA PLANNING COMMITTEE

METROPOLITAN PLANNING ORGANIZATION

SERVING THE LA CROSSE (WI)/LA CRESCENT (MN) URBANIZED AREA

MEETING ACCESS/MONITORING INSTRUCTIONS:

Option 1: Use the link below to join the TEAMS meeting on your desktop/laptop/phone to stream audio, video or both. If you do not have TEAMS on your desktop/laptop/phone, after you activate the link "Click here to join the meeting" you will have to follow several prompts to join the meeting.

Join the meeting now Meeting ID: 264 307 278 532 7 Passcode: yU7ak9CH	Dial in by phone +1 262-683-8845,,293787759# United States, Allenton Find a local number Phone conference ID: 293 787 759#
---	--

If you need assistance accessing or participating in this meeting, please contact LAPC staff as soon as possible by phone at 608-785-5597, by email at eduffer@lacrossecounty.org, or in person at 212 6th St N, Room 1600, La Crosse, WI 54601.

Yog tias koj xav tau kev pabcuam kom nkag mus lossis koom nrog hauv lub rooj sib tham no, thov hu rau LAPC cov neeg ua haujlwm kom sai li sai tau hauv xovtooj ntawm 608-785-5597, lossis email rau eduffer@lacrossecounty.org, lossis tus kheej rau 212 6th St N, Room 1600, La Crosse, WI 54601.

Si necesita ayuda para acceder o participar en esta reunión, comuníquese con el personal de LAPC lo antes posible por teléfono al 608-785-5597, por correo electrónico a eduffer@lacrossecounty.org, o en persona en 212 6th St N, Room 1600, La Crosse, WI 54601.

NOTICES FAXED/MAILED TO:

NEWS MEDIA

La Crosse Tribune
Other Media

OTHERS

LAPC Technical Committees
Public Participation Process List

DEPARTMENTS

County Administrator
Corporation Counsel
County Clerk
Facilities

COMMITTEE MEMBERS

Patrick Barlow, Chair
Tim Candahl/ Marlene Heal, Vice Chair
Tina Tryggstad
Shaundel Washinton-Spivey/Barb Janssen
Scott Schumacher
Mike Poellinger
Steve Elsen/Dean Taylor
Paula Przywojski
Dan Kapanke
Kim Smith
Bob Stupi

MEMBERS: If unable to attend, please contact Bob Gollnik, MPO Executive Director at 608-785-5977.

***PUBLIC COMMENT:** The Committee may receive information from the public, but the Committee reserves the right to limit the time that the public may comment and the degree to which members of the public may participate in the meeting.

PERSONS WITH DISABILITY: If you need accommodation to access/monitor this meeting, please contact the County Clerk's Office at 608-785-9581 as soon as possible.

The LAPC reserves the right to reconsider issues taken up at previous meetings. Documents are emailed and/or mailed to LAPC Policy Board members; please contact the LAPC office to obtain copies. If you have a disability and need assistance



LA CROSSE AREA PLANNING COMMITTEE

METROPOLITAN PLANNING ORGANIZATION

SERVING THE LA CROSSE (WI)/LA CRESCENT (MN) URBANIZED AREA

participating in this meeting, please contact Erin Duffer at 608-785-5597 or at eduffer@lacrossecounty.org as soon as possible in advance of the meeting.

DATE NOTICE FAXED/MAILED/POSTED: July 9, 2025

This meeting may be recorded and any such recording is subject to Disclosure under the Wisconsin Open Records Law



LA CROSSE AREA PLANNING COMMITTEE
METROPOLITAN PLANNING ORGANIZATION
SERVING THE LA CROSSE (WI)/LA CRESCENT (MN) URBANIZED AREA

LA CROSSE AREA PLANNING COMMITTEE
MINUTES OF May 21, 2025
Held in person and via Microsoft Teams

MEMBERS PRESENT:	Patrick Barlow, Tina Tryggestad, Shaundel Washington-Spivey/Barb Janssen, Scott Schumacher, Steve Elsen, Paula Przywojski, Kim Smith, Tim Candahl/Marlene Heal, Mike Poellinger, Dan Kapanke, and Bob Stupi
MEMBERS EXCUSED:	
OTHERS PRESENT:	Erin Duffer, Travis Key, Bob Gollnik, Francis Schelfhout, and Jane Klekamp

CALL TO ORDER

Chair Patrick Barlow called the meeting to order at 4:30 p.m. Roll call was taken, and a quorum was called.

PUBLIC COMMENT: None.

APPROVAL OF MINUTES OF THE March 19, 2025, LAPC MEETING

MOTION by Kim Smith/Mike Poellinger to approve the minutes of the March 19, La Crosse Area Planning Committee meeting. **Motion carried with one abstention from Barb Janssen.**

Marlene Heal served as the voting member until Tim Candahl joined after the approval of the minutes. From that point forward Tim Candahl resumed voting responsibilities.

WELCOME THE NEWLY ELECTED OFFICIALS OF THE LAPC

LAPC staff and Committee Members welcomed Paula Przywojski and Shaundel Washington-Spivey to the LAPC.

RECOGNITION OF STAN HAUSER, TOWN OF ONALASKA, AND MITCH REYNOLDS, CITY OF LA CROSSE FOR YEARS OF SERVICE ON THE LAPC

LAPC staff and Committee Members thanked Stan Hauser and Mitch Reynolds for their time on this Policy Board.

Barb Janssen served as the voting member until Shaundel Washington-Spivey joined after the recognition of Stan Hauser and Mitch Reynolds. From that point forward Shaundel Washington-Spivey resumed voting responsibilities.

NOMINATION OF CHAIR AND VICE CHAIR

Bob Gollnik shared the position of Chair and Vice Chair are up for election. As stated in the current Bylaws, the officers shall be elected to serve for two (2) years and the Chair shall not serve successive terms in that office. It was discussed that the current timeframe does not always line up best with local municipal elections and could result in ending an officer's service early. It was further discussed to review amending these Bylaws.



LA CROSSE AREA PLANNING COMMITTEE

METROPOLITAN PLANNING ORGANIZATION

SERVING THE LA CROSSE (WI)/LA CRESCENT (MN) URBANIZED AREA

MOTION by Kim Smith/Bob Stupi to **TABLE NOMINATION OF CHAIR AND VICE CHAIR TO JULY 16, 2025, MEETING** and **HOLD A SPECIAL JUNE MEETING TO REVIEW BYLAW AMENDMENT OPTIONS. Motion carried unanimously.**

RECOMMENDATION TO APPROVE THE AMENDING 2025-2028 TRANSPORTATION IMPROVEMENT PROGRAM (TIP) LIST AND DOCUMENT - Resolution 3-2025

The La Crosse Area Planning Committee (LAPC) approved the 2025-2028 TIP on November 20, 2024. Since adoption of the TIP, four (4) projects have been added and changes to funding, state project IDs, and/or construction schedules to one (1) existing project.

MOTION by Mike Poellinger/Steve Elsen to approve. **Motion carried unanimously.**

MPO ADVOCACY TOOLKIT

Erin Duffer and Travis Key shared a presentation summarizing the information in the [MPO Advocacy and Engagement Toolkit](#) created by the Association of Metropolitan Planning Organizations (AMPO). This toolkit was designed to educate decision-makers and stakeholders to advocate for transportation priorities.

LAPC RFP UPDATES/FEDERAL FUNDING UPDATE

Bob Gollnik shared the Safe Streets and Roads for All – Comprehensive Safety Action Planning Grant proposals were reviewed, and a consultant was selected. The grant agreement for this program has not been finalized yet as the federal funding situation continues to unfold. Regional Transit Authority Feasibility Study was approved from the Wisconsin DOT for a multi-year contract. The RFP was out for bids in April and May.

MEMBER DUES LETTER

Bob Gollnik shared that the annual member dues letter will be sent out soon to each of the communities and shared a sample of what the letter will look like.

DIRECTOR AND STAFF REPORT

Detailed list of additional LAPC activities and involvements between this meeting and the last Policy Board meeting was provided in the agenda packet.

FUTURE AGENDA ITEMS

MTP Update, TIP Amendment, RFP Updates, Bylaw Amendment, Nomination of Chair and Vice Chair, and Mississippi River Trail (MRT) Support Resolution Amendment.

MEMBER UPDATES OR REQUESTS

Members of the Policy Board were asked to share any local updates or request.

NEXT MEETING DATE: June 2025 (Special Meeting), at 4:30 p.m.

MOTION by Mike Poellinger/Paula Przywojski to adjourn the meeting at 5:28 p.m. **Motion carried unanimously.**

Disclaimer: The above minutes may be approved, amended or corrected at the next committee meeting.

Recorded by Erin Duffer



LA CROSSE AREA PLANNING COMMITTEE

METROPOLITAN PLANNING ORGANIZATION

SERVING THE LA CROSSE (WI)/LA CRESCENT (MN) URBANIZED AREA

Minutes of Policy Board Special Meeting, June 17, 2025

Minutes of the meeting of the Special Policy Board held at 4:00 pm on Tuesday, June 17, 2025, virtually on Microsoft Teams.

Members Present/On Call: Voting: Patrick Barlow, Tim Candahl, Tina Tryggestad, Scott Schumacher, Mike Poellinger, Steve Elsen, Paula Przywojski, Kimberly Smith

Members Excused: Dan Kapanke, Shaundel Washington-Spivey, Bob Stupi

Guests and Staff: Bob Gollnik, Erin Duffer, Travis Key,

Patrick Barlow called the meeting at 4:00pm.

1. Call to Order and Roll Call

Roll call taken, meeting called to order.

2. Public Comment (5 minute time limit per comment)

No comments received.

3. Discuss and Consider LAPC Bylaw Amendment: Article IV Officers

Patrick Barlow introduces discussion topic and the purpose of this special policy board meeting being that in order to make any change to the bylaws, a 30 day public notice is required. Patrick thanks LAPC staff for developing some alternative language options and defers to staff for an explanation about the bylaw amendment.

Bob Gollnik tells attendees that the alternative bylaws presented were a result of attempting to match the LAPC Chair and Vice-Chair election with member community election cycles. One year terms seemed the most appropriate for this purpose. Once Policy Board members have selected their preferred alternative, the amendment will be presented as a resolution for approval at the July Policy Board meeting. Bob asks for thoughts on the options presented to the board.

Kimberly Smith says that she is open to any of the available options and has no strong opinion in any direction.

Scott Schumacher says that he also has no strong objection to any of the options presented, but adds that the third alternative may be too complicated.

Kimberly Smith says that the second option appears the simplest option.

Tim Candahl makes a motion to recommend bylaw amendment option #2; Mike Poellinger seconds the motion.

All in favor, motion carried.

Policy Board

Voting Members: Patrick Barlow, Tim Candahl, Tina Tryggestad, Mitch Reynolds/Barb Janssen, Scott Schumacher, Mike Poellinger, Steve Elsen/Dean Taylor, Stan Hauser/Jerry Monti, Dan Kapanke, Kim Smith, Bob Stupi



LA CROSSE AREA PLANNING COMMITTEE

METROPOLITAN PLANNING ORGANIZATION

SERVING THE LA CROSSE (WI)/LA CRESCENT (MN) URBANIZED AREA

4. Member Updates or Requests

Patrick Barlow asks if there are any members with updates or requests to share with the group. No updates or requests were shared.

5. Next Regular meeting of LAPC: Wednesday, July 16, 2025

6. Adjourn

Motion by Mike Poellinger to adjourn the meeting at 4:08 p.m.; Scott Schumacher seconds the motion and the meeting is adjourned.

Policy Board

Voting Members: Patrick Barlow, Tim Candahl, Tina Tryggstad, Mitch Reynolds/Barb Janssen, Scott Schumacher, Mike Poellinger, Steve Elsen/Dean Taylor, Stan Hauser/Jerry Monti, Dan Kapanke, Kim Smith, Bob Stupi

La Crosse Area Planning Committee

RESOLUTION 4 – 2025

AMENDING

ARTICLE IV OF THE LA CROSSE AREA PLANNING COMMITTEE BYLAWS REGARDING OFFICER TERMS AND LIMITATIONS

WHEREAS, the La Crosse Area Planning Committee (the “Committee”) is governed by Bylaws that provide the structure and rules by which the Committee operates; and

WHEREAS, Article IV of the current Bylaws specifies that the officers of the Committee shall serve two-year terms and that the Chair shall not serve successive terms; and

WHEREAS, the Committee seeks to enhance flexibility and continuity in leadership while maintaining collaboration through municipal term limits; and

WHEREAS, the Policy Board has determined it is in the best interest of the organization to revise Article IV of the Bylaws to provide for one-year officer terms and to allow officers to serve up to three (3) consecutive terms in the same office; and

NOW, THEREFORE, BE IT RESOLVED by the La Crosse Area Planning Committee that:

1. **Amendment to Bylaws**

Article IV of the Bylaws of the La Crosse Area Planning Committee is hereby amended to read as follows:

ARTICLE IV – Officers

The officers of the Committee shall be a **Chair** and a **Vice-Chair**. These officers shall be Voting Members and perform the duties prescribed by these Bylaws and by the parliamentary authority adopted by the Committee. The officers shall be elected to serve for one (1) year. Election of officers shall take place at the regular May meeting of the Committee in each odd calendar year. The Chair or Vice-Chair shall not serve more than three (3) consecutive terms in that office.

2. **Effective Date**

This amendment shall take effect immediately upon adoption of this resolution.

LA CROSSE AREA PLANNING COMMITTEE

Patrick Barlow, Chair

Bob Gollnik, Executive Director
Dated: July 16, 2025

La Crosse Area Planning Committee

RESOLUTION 5 – 2025

SUPPORTING THE *DESIGNATION OF THE MISSISSIPPI RIVER TRAIL WITHIN THE LIMITS OF LAPC'S METROPOLITAN PLANNING AREA (MPA), Version Two*

WHEREAS bicycle tourism is a growing industry in North America, contributing \$47 billion a year to the economies of communities that provide facilities for such tourists; and

WHEREAS the Mississippi River Trail is a national bicycle route, along the length of the Mississippi River, through ten states, from the headwaters at Lake Itasca to the Gulf of Mexico; and

WHEREAS the Mississippi River Trail was designated as one of only 16 National Millennium Trails which honor the past and imagine the future by preserving and commemorating major events and aspects of America's history and culture; and

WHEREAS the Mississippi River Trail provides access to and promotes the scenic, historic, archaeological, cultural, recreational and natural qualities of the Mississippi River and its amenities; and

WHEREAS the Mississippi River Trail is located primarily on the Wisconsin All-American Great River Road National Scenic Byway (WIS 35) between Prescott and Illinois State Line, but also routed on other state and county highways, local roads or alternative routes for bicycling; and

WHEREAS the Wisconsin Mississippi River Parkway Commission and the La Crosse Metropolitan Planning Organization, with the cooperation of the Wisconsin Department of Transportation, Wisconsin Department of Natural Resources and other stakeholders, have proposed a specific route to be designated as Mississippi River Trail; and

WHEREAS the Mississippi River Trail implements Wisconsin Statutes Chapters 1.11, 84.01(35), 84.60, and 85.02, 349.23 and Wisconsin Administrative Code Chapter Trans 400 which required that “due consideration to establishing bikeways and pedestrian ways in all new highway construction and reconstruction projects”; and

WHEREAS the Mississippi River Trail adds value to existing roads and trails; and

WHEREAS the Mississippi River Trail is largely ready to sign and market, and many suggested improvements are already planned; and

WHEREAS the Mississippi River Trail will contribute to sustainable economic development in 33 Wisconsin Mississippi River communities; and

WHEREAS the proposed route for the Mississippi River Trail comes through the La Crosse Metropolitan Planning Area and can therefore provide a benefit to our residents and businesses; and

WHEREAS the Mississippi River Trail will provide increased recreational and transportation choices for individuals to enjoy the outdoors as well as provide health, economic, and quality of life benefits; and

WHEREAS the Mississippi River Trail continues Wisconsin's tradition of honoring and enhancing the Mississippi River by offering multiple bicycling experiences, each in a unique river landscape; and

WHEREAS we have investigated the proposed route and found it to be a suitable route, and desire that the route be designated so that it can be mapped and signed, thereby promoting bicycle tourism in our area; and

WHEREAS the LAPC Policy Board approved Resolution 3-2024, Supporting the Designation of the Mississippi River Trail Within the Limits of LAPC Metropolitan Planning Area (MPA) on May 15, 2024; and

WHEREAS this resolution supports Version Two (2) of the MRT route and connection to the Minnesota-MRT within the limits of the MPA; and

THEREFORE, BE IT RESOLVED, that the La Crosse Metropolitan Planning Organization in order to receive full benefit of the Mississippi River Trail, hereby expresses its approval and support for the development of the Mississippi River Trail, and requests that the appropriate officials see to it that the route is officially designated along the following segments within the limits of the La Crosse Metropolitan Planning Area:

SOUTHBOUND: Great River State Trail from the north Metropolitan Planning Area (MPA) boundary south to the Great River Landing at the intersection of WIS 35/2nd Avenue South and WIS 157/Main Street, proceed east on WIS 157/Main Street to the intersection with 3rd Avenue South, turn right and continue south on 3rd Avenue South to the intersection with Oak Avenue South, continue straight and south on Oak Avenue South to the intersection with Oak Forest Drive, turn right and continue west on Oak Forest Drive to the intersection with WIS 35/2nd Avenue South, continue west through the intersection and turn left to enter the multi-use path along the west side of WIS 35, continue south on the multi-use path along the west side of WIS 35 to the intersection with Livingston Street, turn left and continue east on Livingston Street to the intersection with Avon Street, turn right and continue south on Avon Street to the intersection with Monitor Street, turn left and continue east on Monitor Street approximately 500-feet to the intersection with the Jim Asfoor, La Crosse River Marsh Trail, turn right and continue southwest on the Jim Asfoor, La Crosse River Marsh Trail to the intersection with the Vietnam Veterans, La Crosse River Marsh Trail, turn right and continue west on the Vietnam Veterans, La Crosse River Marsh Trail to the intersection with Veterans Memorial Drive, turn right and continue south on Veterans Memorial Drive to the intersection with La Crosse River Walk, turn right and continue south on La Crosse River Walk to the intersection with Front Street/King Street, stay straight and continue east on King Street to the intersection with 2nd Street, turn right and continue south on 2nd Street to the intersection with Market Street, turn right on Market Street and continue west on Market Street until it ends, stay straight and continue south on Houska Park Trail to the intersection with Marco Drive, turn left and continue east on the trail/bridge to the intersection with Cook Street, turn right and continue south and east on the trail until the trail splits, turn right and continue east on the trail to the intersection with Maple Street, stay straight and continue east on Maple Street to the intersection with West Avenue, turn right and continue south on West Avenue to the intersection with Bennett Street, turn left and continue east on Bennett Street to the intersection with 13th Street, turn right and continue south on 13th Street to the intersection with Chase Street/Riverside Drive, stay straight and continue south on Riverside Drive to the intersection with Thompson Street, turn left and continue east on Thompson Street to the intersection with 15th Street, turn right and continue south on 15th Street to the intersection with Gladys Street, turn slight left and continue south and east on Gladys Street to the

intersection with East Avenue, turn right and continue south on East Avenue to the intersection with Shelby Road, stay straight and continue south on East Avenue/Bank Drive to the intersection with East Burr Oak Street, turn left and continue east on East Burr Oak Street to the intersection with Markle Road, turn right and continue south on Markle Road to the intersection with South Richard Drive, turn left and continue east on South Richard Drive to the intersection with Robin Hood Drive, turn right and continue southeast on Robin Hood Drive to the intersection with Nottingham Avenue, turn right and continue south on Nottingham Avenue to the intersection with Scarlett Drive, turn left and continue east on Scarlett Drive to the intersection with Regional Route 1/Pammel Creek Bridge, turn right and continues south on Regional Route 1/Pammel Creek Bridge to the intersection with Rivercrest Drive North, turn left and continue south on Rivercrest Drive North to the intersection with 33rd Street South, turn left and continue east on 33rd Street South to the intersection with WIS 35/Mormon Coulee Road, turn right on the multi-use path along the west side of WIS 35/Mormon Coulee Road and continue south on the multi-use path to the intersection with County Trunk Highway (CTH) GI, stay straight and continue south on WIS 35 to the south MPA boundary.

NORTHBOUND: WIS 35 from the south MPA boundary north to the intersection with CTH GI, stay straight and continue north on the multi-use path along the west side of WIS 35/Mormon Coulee Road to the intersection with 33rd Street South, turn left and continue west on 33rd Street South to the intersection with Rivercrest Drive North, turn right and continue north on Rivercrest Drive North to the intersection with Regional Route 1/Pammel Creek Bridge, turn right and continue north on Regional Route 1/Pammel Creek Bridge to the intersection with Scarlett Drive, turn left and continue west on Scarlett Drive to the intersection with Nottingham Avenue, turn right and continue north on Nottingham Avenue to the intersection with Robin Hood Drive, turn left and continue northwest on Robin Hood Drive to the intersection with South Richard Drive, turn left and continue west on South Richard Drive to the intersection with Markle Road, turn right and continue north on Markle Road to the intersection with East Burr Oak Street, turn left and continue west on East Burr Oak Street to the intersection with Bank Drive, turn right and continue north on Bank Drive/East Avenue South to the intersection with Shelby Road, stay straight and continue north on East Avenue to the intersection with Gladys Street, turn left and continue north and west on Gladys Street to the intersection with 15th Street, turn slight right and continue north on 15th Street to the intersection with Thompson Street, turn left and continue west on Thompson Street to the intersection with Riverside Drive, turn right and continue north on Riverside Drive to the intersection with Chase Street/13th Street, stay straight and continue north on 13th Street to the intersection with Bennett Street, turn left and continue west on Bennett Street to the intersection with West Avenue, turn right and continue north on West Avenue to the intersection with Maple Street, turn left and continue west on Maple Street until it ends, stay straight and continue west on the trail until the trail splits, turn left and continue north and west on the trail to the intersection with Cook Street, turn left and continue west on the trail/bridge to the intersection with Marco Drive, turn right and continue north on Houska Park Trail to the intersection with Market Street, stay straight and continue east on Market Street to the intersection with 2nd Street, turn left and continue north on 2nd Street to the intersection with King Street, turn left and continue west on King Street to the intersection with Front Street/La Crosse River Walk, turn right and continue north on La Cross River Walk to the intersection with Veterans Memorial Drive, turn left and continue north on Veterans Memorial Drive to the intersection with Vietnam Veterans, La Crosse River Marsh Trail, turn left and continue east on Vietnam Veterans, La Crosse River Marsh Trail to the intersection with the Jim Asfoor, La Crosse River Marsh Trail, turn left and continue northeast on the Jim Asfoor, La Crosse River Marsh Trail to the intersection with Monitor Street, turn left and continue west on Monitor Street to the intersection with Avon Street, turn right and continue north on Avon Street to the intersection with Livingston Street, turn left and continue west on Livingston Street to the intersection with WIS 35, cross

WIS 35 to the multi-use path along the west side of WIS 35, turn right on the multi-use path along the west side of WIS 35 and continue north on the path to the intersection with Oak Forest Drive, turn right and continue east on Oak Forest Drive to the intersection with Oak Avenue South, turn left and continue north on Oak Avenue South to the intersection with 3rd Avenue South, continue straight and north on 3rd Avenue South to the intersection with WIS 157/Main Street, turn left and continue west on WIS 157/Main Street to the intersection with WIS 35/2nd Avenue South, proceed west to the Great River Landing on the west side of this intersection, turn right and continue north on the Great River State Trail to the north MPA boundary.

CONNECTION TO MN-MRT (connections #1-2 are in Pierce County, connections #3-4 are in Buffalo County):

#5 La Crosse County/City of La Crosse (near La Crescent, MN):

Eastbound (from MN-MRT): From Minnesota state line on US 14, proceed east on US 14/Wagon Wheel Trail to the intersection with US 53/61/3rd Street, take right on US 14 East/US 61 South/3rd Street and proceed south to the intersection with Division Street, take right on Division Street and proceed west to the intersection with 2nd Street/WI-MRT.

Westbound (from WI-MRT): From the intersection of WI-MRT/2nd Street/King Street, proceed east on King Street to the intersection with US 14/53/61 and 3rd Street, take right and proceed south on 3rd Street to the intersection with US 14 East/US 61 South/WIS 16 East & Cameron Street, take right and proceed on south shoulder of US 14/Wagon Wheel Trail to the Minnesota state line.

(See attached map)

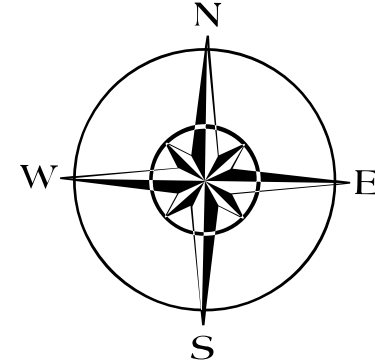
LA CROSSE AREA PLANNING COMMITTEE

Patrick Barlow, Chair

Bob Gollnik, Executive Director
Dated: July 16, 2025

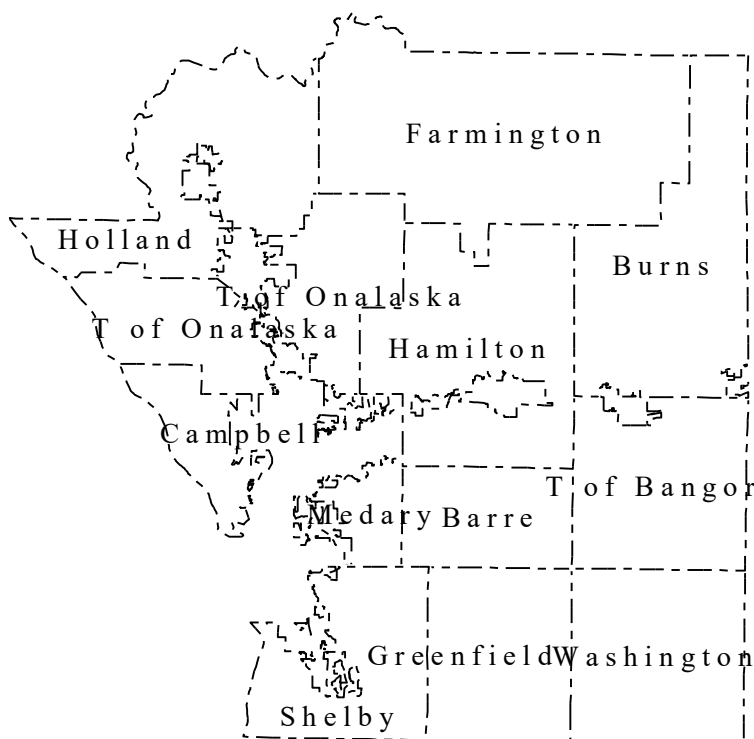
WISCONSIN DEPARTMENT OF TRANSPORTATION

LA CROSSE
County

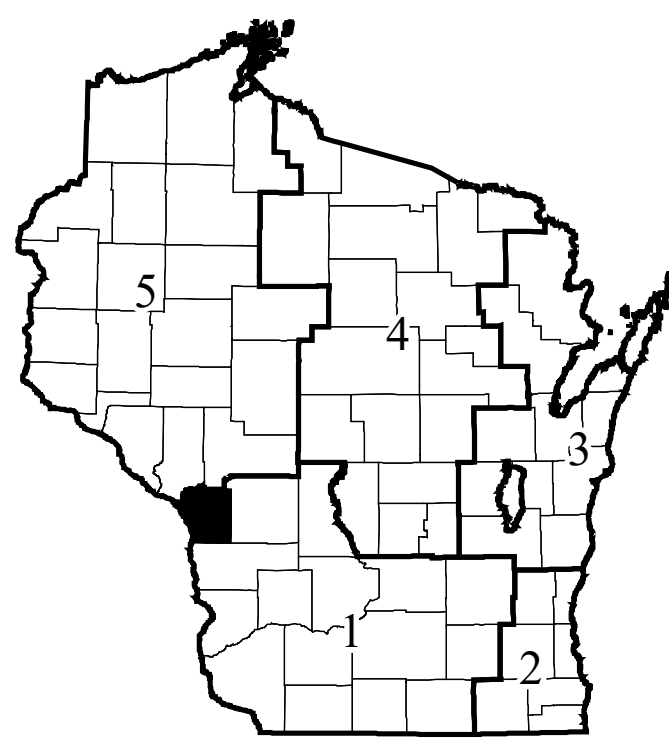


	DATE	COUNTY TRUNKS	COUNTY OTHER ROADS	COUNTY TRUNK HIGHWAY & OTHER COUNTY ROADS Certified in accordance with sec. 90.302 Wis. stat.	
				Signature	Date
(1)	4-1-20	281.02	00.00		
(2)	1-1-21	-	-		
(3)	4-1-21	-	-		

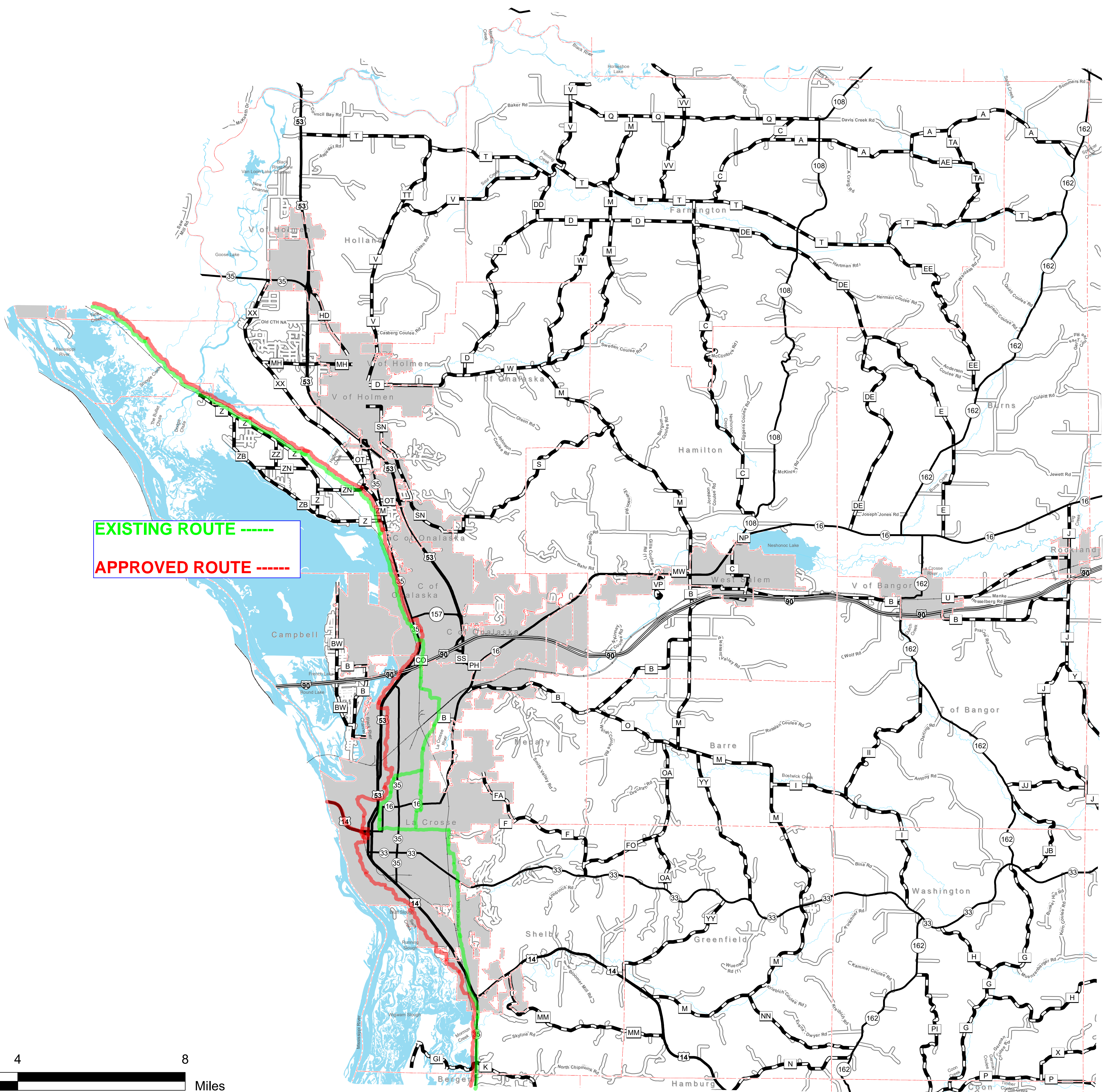
- (1) THIS DATA REPRESENTS THE LAST CERTIFIED MILEAGE AS CORRECTED BY THE HIGHWAY REGION.
(2) THE COUNTY HIGHWAY COMMISSIONER IS TO FILL IN THE MILEAGE TO BE CERTIFIED AS OPEN TO THE PUBLIC AS OF THE FOLLOWING JANUARY, INCLUDING THE NEW CHANGES THAT ARE MADE ON THE PLAT.
(3) THIS DATA REPRESENTS MILEAGE ADJUSTMENTS MADE BY THE D.O.T. REGION DUE TO FIELD VERIFICATION, INVENTORY, ANNEXATION, ETC.



Civil Towns

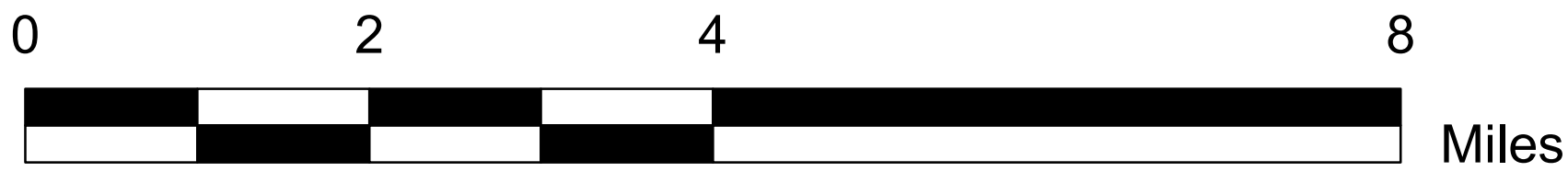


Regions



Legend

- Interstate
US Highway
State Road
County Road
Town Road
Railroad
Civil Town Border



The information contained on this map was created for the official use of the Wisconsin Department of Transportation (WisDOT). Any other use without the express written permission of the Wisconsin Department of Transportation is prohibited. The user assumes all liability for any errors or omissions in the information for other than official WisDOT business.

STATE OF WISCONSIN
WISCONSIN DEPARTMENT OF TRANSPORTATION
TOWN PLAT RECORD

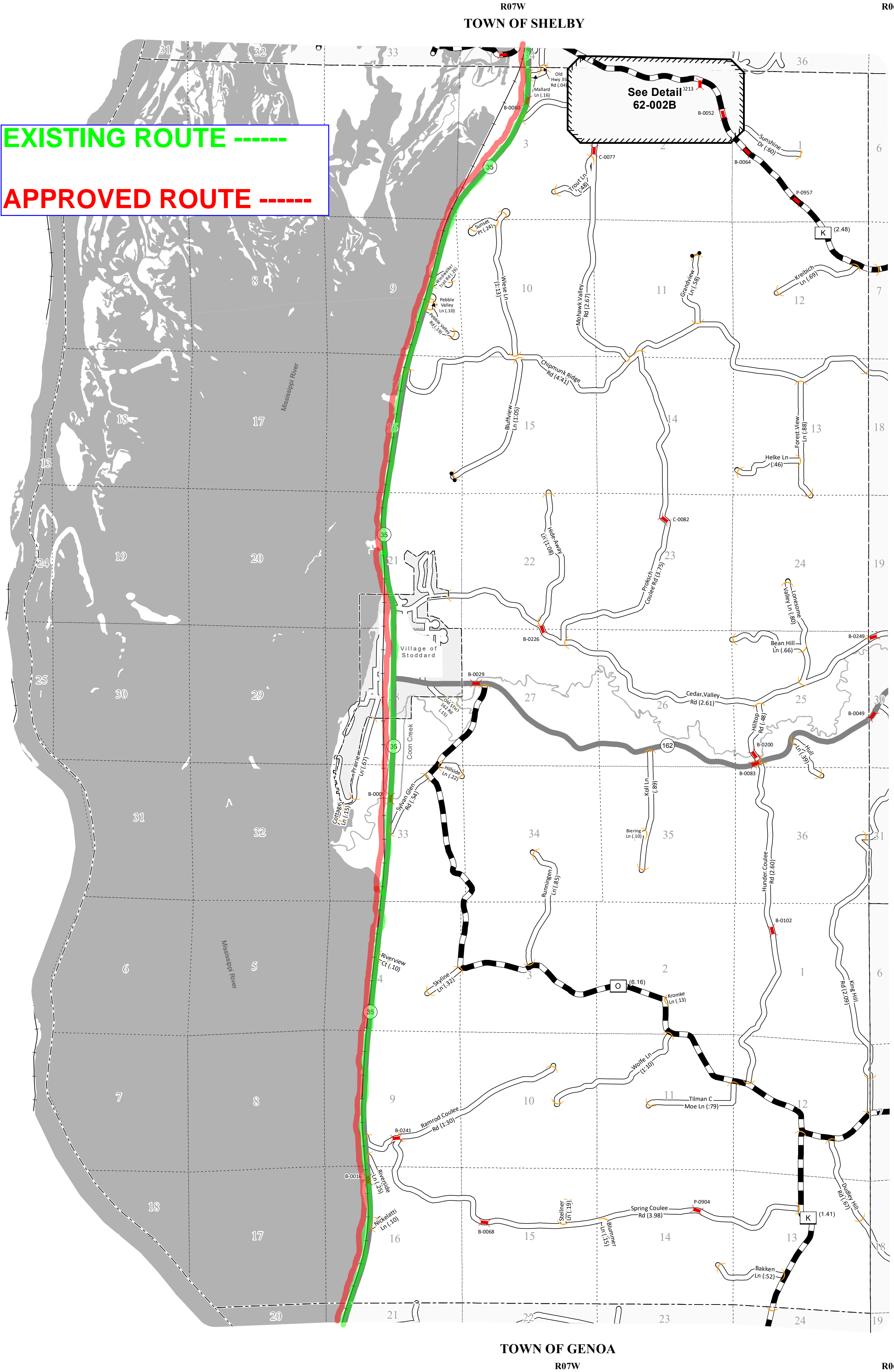
62-002A

TOWN OF
BERGEN
COUNTY: VERNON

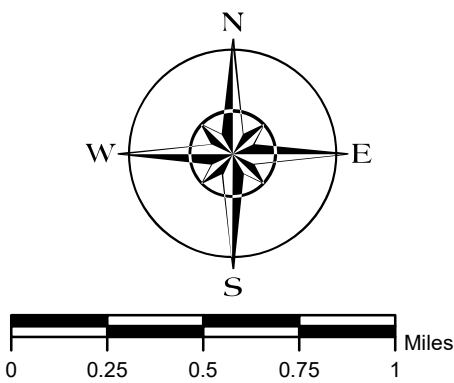
	DATE	MILEAGE FOR LOCAL ROADS/STREETS	LOCAL ROADS/STREETS	
			Certified in accordance with sec. 86.30 Wis. stat.	
(1)	4-1-20	44.79	Name:	Title:
(2)	1-1-21	.		
(3)	4-1-21	.		
			Signature:	Date:

- (1) THIS DATA REPRESENTS THE LAST CERTIFIED MILEAGE AS CORRECTED BY WISDOT WHICH MAY HAVE BEEN USED FOR PAST TRANSPORTATION AIDS.
- (2) THE TOWN CHAIRMAN OR CITY/VILLAGE CLERK IS TO FILL IN THE MILEAGE TO BE CERTIFIED AS OPEN TO THE PUBLIC AS OF THE FOLLOWING JANUARY, INCLUDING THE NEW CHANGES THAT ARE MADE ON THE PLAT.
- (3) THIS DATA REPRESENTS MILEAGE ADJUSTMENTS MADE BY WISDOT DUE TO FIELD VERIFICATION, INVENTORY, ANNEXATION, ETC. TRANSPORTATION AID PAYMENTS MAY BE MADE BASED ON THIS FIGURE.

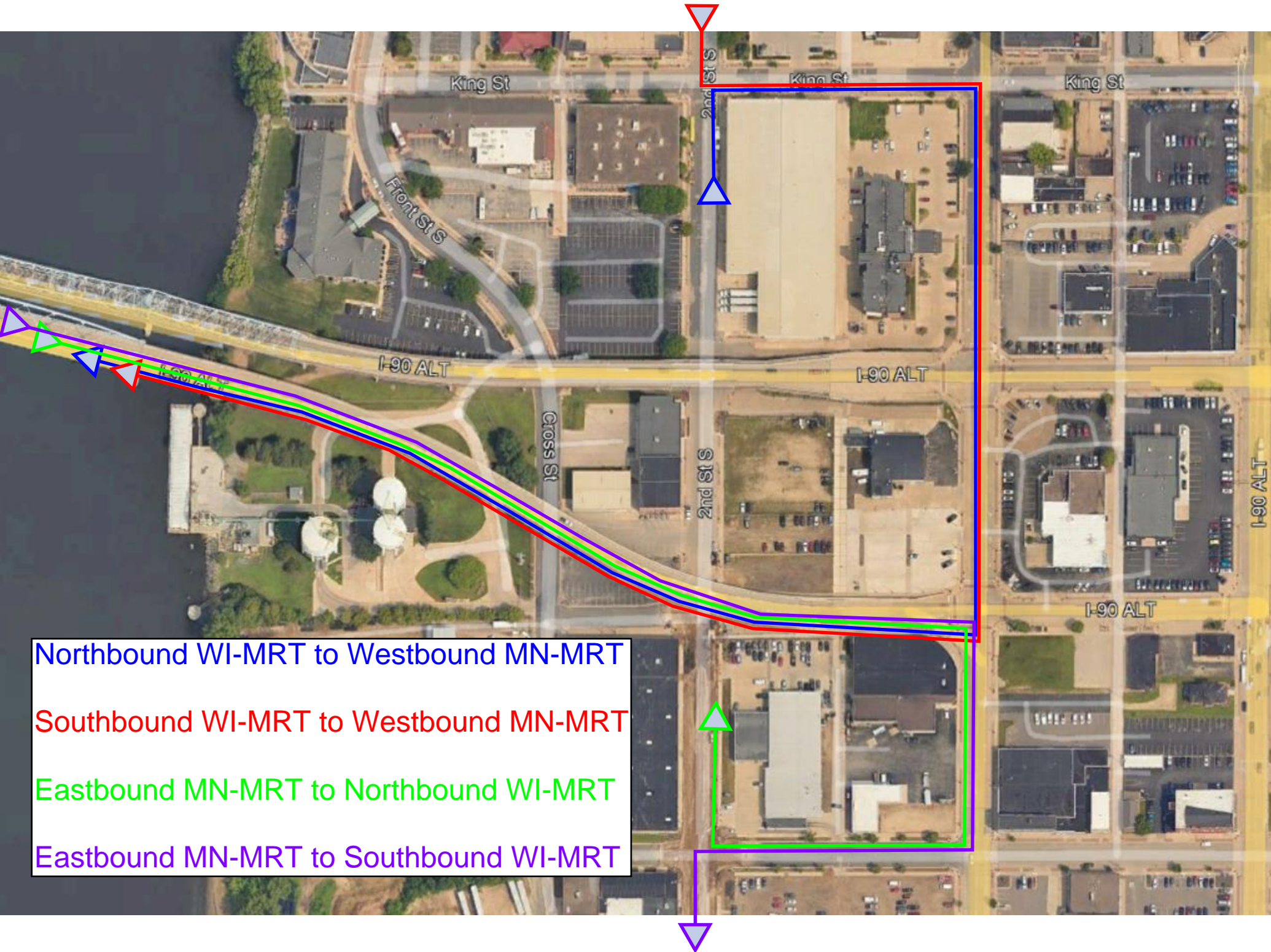
MILEAGE FOR COUNTY TRUNKS	MILEAGE FOR COUNTY OTHER ROADS
10.05	00.00



- LEGEND:
- County Trunk Highway
 - Local Road
 - State Trunk
 - Railroad
 - CVT Border
 - PLSS Border
 - Bridge
 - Gate
 - Route Identifier



The information contained on this map was created for the official use of the Wisconsin Department of Transportation (WisDOT). Any other use while not prohibited, is the sole responsibility of the user. WisDOT expressly disclaims all liability regarding fitness of use of the information for other than official WisDOT business.



- Northbound WI-MRT to Westbound MN-MRT
- Southbound WI-MRT to Westbound MN-MRT
- Eastbound MN-MRT to Northbound WI-MRT
- Eastbound MN-MRT to Southbound WI-MRT

La Crosse Area Planning Committee

RESOLUTION 6 – 2025

AMENDING THE

2025 - 2028 Transportation Improvement Program (TIP) for the La Crosse / La Crescent Planning Area

WHEREAS, the U. S. Department of Transportation regulations require the development and approval of a Transportation Improvement Program (TIP) for the metropolitan planning area by the Metropolitan Planning Organization (MPO); and

WHEREAS, the La Crosse Area Planning Committee approved the 2025-2087 TIP on November 20, 2024;

And,

WHEREAS, since adoption of the TIP, three (3) projects have been added to the TIP projects list:

243-25-024	State of Wisconsin	Mormon Coulee Road, City of La Crosse, Birch Street Intersection, Left Turn Lanes/Monotubes, Design Anticipated in 2025, Construction Anticipated in 2029/2030
243-25-025	City of La Crescent	Safe Routes to School, Construct Eight (8) Walking and Biking Structures
243-25-026	State of Minnesota	Resurface Mainline Bridges on I-90 Over the Mississippi, Dresbach Bridges 85801 & 85802 (Ref. TIP #243-24-026)

And,

WHEREAS, since adoption of the TIP, Changes to funding, project description, state project ID, and/or construction/design schedules has been made to one (1) State of Wisconsin bridge rehabilitation project (243-24-026); two (2) City of La Crosse projects (243-23-034 & 243-22-035); and one (1) City of La Crescent transit project (243-09-015).

NOW, THEREFORE, BE IT RESOLVED that the La Crosse Area Planning Committee, hereby, approves an amendment to the 2025-2028 TIP table and document as reflected in the attachment.

LA CROSSE AREA PLANNING COMMITTEE

Patrick Barlow, Chair

Bob Gollnik, Executive Director

Dated: July 16, 2025

La Crosse Area Planning Committee

RESOLUTION 7 – 2025

APPROVING THE

2026 - 2029 Minnesota Transportation Improvement Program (TIP) List for the La Crosse / La Crescent Planning Area

WHEREAS, the U. S. Department of Transportation regulations require the development and approval of a Transportation Improvement Program (TIP) for the metropolitan planning area by the Metropolitan Planning Organization (MPO); and

WHEREAS, Federal regulations require a continuing, cooperative, and comprehensive transportation planning and programming process for TIP/STIP coordination; and

WHEREAS, the schedules for the adoption of the District 6 ATIP and Minnesota STIP recommend that the LAPC approve the Minnesota projects list by July 31;

And,

NOW, THEREFORE, BE IT RESOLVED: that the LAPC approves the attached Minnesota project list for the *2026-2029 La Crosse and La Crescent Metropolitan Area Transportation Improvement Program* as constituting the final Minnesota TIP, consistent with the District 6 ATIP and Minnesota STIP;

And,

BE IT FURTHER RESOLVED: that the LAPC will approve in November 2025 the 2026-2029 Wisconsin TIP projects list which will include the approved 2026-2029 Minnesota TIP projects list.

LA CROSSE AREA PLANNING COMMITTEE

Patrick Barlow, Chair

Bob Gollnik, Executive Director

Dated: July 16, 2025



LA CROSSE AREA PLANNING COMMITTEE

METROPOLITAN PLANNING ORGANIZATION

SERVING THE LA CROSSE (WI)/LA CRESCENT (MN) URBANIZED AREA

TASK/PROJECT	HIGHLIGHTS	NEXT STEPS
MTP Engagement Efforts	Q2 2025 focused on reviewing outreach efforts, summarizing themes, and planning documentation.	Finalize plan and recommendations, set to be adopted in September.
Illustrative Project Planning Discussions	LAPC staff finished conducting illustrative project planning discussions with member communities, sharing engagement themes and results, sharing draft MTP recommendations related to policy, planning, and projects, and developing timeline and cost estimates for individual projects identified through these discussions. Staff have been implementing the results of the illustrative project planning discussions into the MTP's recommendations.	Staff are currently compiling the results of discussions for inclusion in the MTP. This includes getting cost estimates from those that have not yet shared them with LAPC.
MTP Narrative Development	Bob, Erin, and Travis have dedicated more time to writing the narrative and developing supporting figures for the MTP document.	Send draft MTP to state and federal partners for review in July. Continue to develop supporting documentation to accompany the MTP.
WIS 53 & 14/61 TAC and LOAC Meetings	Erin and Travis attended TAC/LOAC meetings to review preferred alternatives and selected design preferences for US 53	Continue participating in TAC and PIMs
Onalaska Town Board	Travis and Bob presented at the June 10 Town of Onalaska Board meeting to (re)introduce board members to LAPC services and skillsets.	Work with Town to identify areas of planning assistance and projects.
APA Wisconsin Conference	Wisconsin chapter of the American Planning Association is holding their annual conference in La Crosse, September 11-12, 2025. Erin is on the conference planning committee and encourages local municipalities to attend and submit presentation proposals.	Monthly meetings
WI MPO MTP/LRTP Workgroup	Erin is leading an MPO-driven initiative to survey existing MTPs/LRTPs activities in Wisconsin and best practices nationwide. Workgroup was formed last year and work to initiate opportunities for improvement.	Bi-monthly meetings, Best Practices Report and Recommendations
Harbor Commission/Port Statistical Area	Bob has been working with Adam Binsfield (Joint Harbor Commission Chair), and La Crosse Area Chamber of Commerce to create a MOU with the Prairie Du Chien Chamber of Commerce to move forward with PSA efforts and promote waterway access/economic development for the region. MOU have been signed by both Chambers	Continue to participate in relevant Chamber Events
FRA RCE Grants	LAPC led an FRA RCE Grant Submittal on behalf of the Town of Onalaska (Brice Prairie), submitted on 9/19. LAPC supported an FRA RCE Grant for the City of La Crescent, submitted 9/23. Both grants were successful, and staff is awaiting Federal review to move forward with the grant agreement process. FRA project managers have been assigned and staff have had project kickoff meetings with FRA managers Grant agreement paperwork has been submitted. Tentative start date(s) are Q3 2025.	Release RFP after Federal review and guidance is provided.



LA CROSSE AREA PLANNING COMMITTEE

METROPOLITAN PLANNING ORGANIZATION

SERVING THE LA CROSSE (WI)/LA CRESCENT (MN) URBANIZED AREA

SS4A	LAPC received "Official" notification of award for a Comprehensive Safety Action Plan through the SS4A program on October 8. The timeline for the beginning of the project (in partnership with the City of La Crosse) was initially May 2025. A Grant agreement is in queue for review at FHWA HQ, and LAPC collaborated with a selection panel to review and interview consultants. A consultant was selected on April 24, and the project team is awaiting a notice to proceed from FHWA.	Bob reached out to legislators to explore the delay.
MnDOT State Rail Plan Policy Advisory Committee	Most recent meeting was November 26, for the MNDOT State Rail Plan PAC #2. A final draft of the plan is being produced beginning in May 2025 and should be complete in Summer 2025.	Maintain communications and collaborate as necessary moving forward.
MNDOT Freight Network Optimization Tool	Bob is serving on the advisory steering committee for the FNOT, which aims to provide an online application that will provide both public and private sector users with the ability to analyze and visualize freight data in support of multimodal freight planning and supply chain analysis to reduce goods movement costs, create a more efficient freight network, and to support economic development across Minnesota. A recent update call was completed on June 26.	As the tool moves from beta phase, determine uses in SE Minnesota.
Regional Bike Map	Travis is coordinating with Jenna Dinkel from the City of La Crosse to update the old regional bicycle map. This map was last updated in 2011. This effort has also aided in LAPC's effort to update its spatial data inventory. The final draft bike map was presented by Travis at the Bicycle-Pedestrian Advisory Committee and the Committee on Transit and Active Transportation for feedback.	The project is in the final design stages and is currently accepting feedback. Printed brochures and online access will be available by early August.
Travel Demand Model	Travis and Erin have engaged with WisDOT travel demand modelers to ensure programmed projects are reflected in the current model. Additionally, discussion was held to determine what assumptions can be gleaned from the level of service results from the model.	Post-MTP adoption, a secondary analysis of socioeconomic and level of service projections will be amended into the MTP in 2026 to reflect more up-to-date population and household projections; key inputs for the travel demand model.
La Crosse County Coordination	LAPC continues to support multiple La Crosse County initiatives, including a Compensation Study, Housing Study, Comprehensive Plan Implementation Team, and a recently finalized Economic Development Plan. In addition, Bob continues to participate in monthly department head meetings.	Continue participating in relevant meetings and sharing information with LAPC members where applicable.
ORA Trails Site Amenities	In September, Outdoor Recreation Alliance invited LAPC to serve on a site amenities committee to assist on designs, amenities, and connectivity. The committee is meeting bi-weekly and collaborating with a number of local partners to make the project a success. Progress has been made on site planning, trail construction, and partner coordination. Bob attended the Trail Farm Groundbreaking event on the evening of April 11.	Trail work has begun and the project is in advisory model phase for the summer. .



LA CROSSE AREA PLANNING COMMITTEE

METROPOLITAN PLANNING ORGANIZATION

SERVING THE LA CROSSE (WI)/LA CRESCENT (MN) URBANIZED AREA

Mid America Freight Coalition	Coalition is a pooled fund research program comprised of 10 upper Midwest states. Bi-monthly meeting on December 5 covered rail corridor hazards, annual meeting funding, and peer to peer discussions.	Continue participating in regular meetings and monitor research.
La Crosse Air Services Workgroup	In 2024, La Crosse Area Development Corporation (LADCO) organized a workgroup of various stakeholders to discuss strategies to expand and 'rightsized' LSE services. Bob attends monthly meetings on behalf of LAPC, and in January members of the group (including Bob), interviewed and selected the next airport consultant. Recent updates from LSE staff include promising discussions with airlines and options to implement the minimum revenue guarantee funds from the City and County.	Continue monthly meetings and work with the selected consultant to support air service improvement.
University Connections	<p><u>UW-La Crosse</u></p> <ul style="list-style-type: none"> Bob coordinated with the Communication & Media Lab to organize a student project that will capture drone footage for La Crescent that can be used to promote the Wagon Wheel Trail and assist in pursuing funding for ongoing Root River Trail connection. The student also shot footage of Veterans Park on 5/9 to create a capstone project. Bob coordinated with County Parks staff, and members of the County and community for additional participation. <p><u>UW-Madison</u></p> <ul style="list-style-type: none"> Travis and Bob submitted a Capstone project request to the Engineering Department to assist in water management strategies at the ORA Trail Farm, as well as a separate capstone project to assess feasibility of a multi-use trail along Smith Valley Road in Medary. AI for Commodity Flow Meeting <p><u>Viterbo University</u></p> <ul style="list-style-type: none"> Bob has worked with Sam Scinta to support development of the Common Good Initiative and facilitated additional meetings with County Staff and Leadership. Sam extended discussions with the City of Onalaska to refine elements of the program and further develop the concept of student projects. 	<p><u>UW-La Crosse</u></p> <p>Share and promote video footage with communities as it becomes available.</p> <p><u>UW-Madison</u></p> <p>Provide additional information as necessary and await decision on chosen projects in the upcoming semester.</p> <p><u>Viterbo University</u></p> <p>Continue to support Mr. Scinta on the initiative.</p>

July 16, 2025

*NOTE: Total Improvement Cost indicates past and future project phases which may be outside the four-year TIP cycle and is for illustrative purposes only

	NR	T.	NR
		E	NR
	NR		NR
	NR		NR
	NR		NR
	MA, NR		MA, NR
	NR H		NR H
	NR		NR
	MA, (BC)		H
	MA,		MA,
	MA, (BC)		MA, (BC)
	MA,		MA,
	MA, (BC)		S
	H NR		H NR
	F		S
	NR		NR
	NR		NR
	H NR		H NR

2025-2028 Transportation Improvement Program Project List

July 16, 2025

*NOTE: Total Improvement Cost indicates past and future project phases which may be outside the four-year TIP cycle and is for illustrative purposes only.

July 16, 2025						2025 (x\$1000)					2026 (x\$1000)					2027 (x\$1000)					2028 (x\$1000)						
Project Number	State ID Number	Sponsoring Agency	Project Description	Project Type	Exp. Type	Fed	WI	MN	Local / Other	Total	Fed	WI	MN	Local / Other	Total	Fed	WI	MN	Local / Other	Total	Fed	WI	MN	Local / Other	Total	Source of Funds	
243-19-017	7575-01-35, 65	State of Wisconsin	STH 16, Medway Overpass Structures B-32-111 & 115, Concrete Overlay, Paint, Repair, Design Obligated in 2019, Construction Anticipated in 2025	Sys Pres	PE																						NHPP
					ROW																						
					Const	2,796.2		698.8		3,494.0																	
243-24-039	7570-05-36, 66	State of Wisconsin	STH 16 (La Crosse to Sparta), Moos Rd Intersection, Design Anticipated in 2025, Construction Anticipated in 2028	Sys Pres	PE																						HSIP
					ROW																						
					Const	2,796.2		74.0		74.0																	
243-20-029	7570-05-00, 70	State of Wisconsin	STH 16 (La Crosse to Sparta), CTH M Intersection (Monotubes and Left-Turn Lanes), Design Obligated in 2020, Construction Anticipated in 2024	Sys Pres	PE																						HSIP
					ROW																						
					Const																						
243-19-034	7575-01-06, 26, 66, 76, 3700-10-64	State of Wisconsin	STH 16, La Crosse – Sparta (Lossy Blvd to South Kinney Coulee Rd), Pavement Repair, Mill & Overlay and Signal Replacement, Design Obligated in 2019, Real Estate Obligated in 2024 and Construction Anticipated in 2025-2028	Sys Pres	PE																						STBG
					ROW																						
					Const	6,425.5		1,956.4		38.9	8,420.8																
243-22-034	7570-05-06, 26, 76	State of Wisconsin	STH 16, La Crosse – Sparta (Veterans Park to CTH M), Pavement Replacement, Design Obligated in 2022, Real Estate Anticipated in 2025 and Construction Anticipated in 2028-2029	Pav Repl	PE																						NHPP
					ROW																						
					Const																						
243-19-035	7140-00-02, 62, 82	State of Wisconsin	STH 35, La Crosse – Trempealeau (Black River Bridges B-32-016 and B-32-018), Replacement, Design Obligated in 2019 and Construction in 2026-2027	Br Repl	PE																						STBG
					ROW																						
					Const																						
243-21-002	1630-03-00, 80	State of Wisconsin	USH 53, La Crosse – Galeville (B-32-131, 132, 136, 139, 140), Bridge Rehabilitations, Design Obligated in 2022, Construction Anticipated in 2031-2032	Sys Pres	PE																						NPP
					ROW																						
					Const																						
243-24-027	5120-03-04, 74	State of Wisconsin	STH 33/State Road, City of La Crosse, Lowy Blvd to East City Limits (including Bridge Rehab B-32-0083), Pavement Replacement, Design Anticipated in 2025, Construction Anticipated in 2032	Pav Repl	PE	648.2			216.0	864.2																	STBG
					ROW																						
					Const																						
243-25-012	5120-03-05, 75	State of Wisconsin	STH 33, La Crosse – Casshton (Wedgewood Drive to Southdale Dr) Curb Ramps for WisDOT ADA Trans Plan, Design Anticipated in 2025, Construction Anticipated in 2032	Other	PE																						STP
					ROW																						
					Const																						
243-20-030	5120-05-04, 74	State of Wisconsin	STH 33 (La Crosse to Casshton), Forest Ridge Dr – Kirschner Rd, Resurfacing, Design Obligated in 2020, Construction Anticipated in 2029 (Advanceable to 2026-2027)	Sys Pres	PE																						STBG
					ROW																						
					Const																						
243-19-023	7930-08-01, 21, 71	State of Wisconsin	STH 108 – West Salem – Melrose, Old 16 Road to North County Line, Pavement Replacement, (except Stan Olson Rd to L. Platt Rd) includes Bridge Rehab B-32-0181, Design Obligated in 2019, Real Estate Obligated in 2021, Construction in 2023-2024	Pav Repl / Sys Pres	PE																						STBG
					ROW																						
					Const																						
243-22-030	5991-02-03, 73, 76	State of Wisconsin	STH 157 – Main St., City of Onalaska (16th Ave S to I-05 East of 17th Ave), Pavement Replacement, Design Obligated in 2022, Construction Anticipated in 2029 (Advanceable to 2028)	Pav Repl	PE																						NPP
					ROW																						
					Const																						
243-20-017	5347-00-00	La Crosse County	CTH B, Town of Campbell – City of La Crosse (Clinton St to Lakeshore Dr), Reconstruct, 100% Locally funded Design, Obligated in 2020, Potential BUILD-TIGER grant or STBG project for Construction.	Reconst	PE																						LF
					ROW																						
					Const																						
243-20-022	7049-00-00, 70	La Crosse County	CTH D, Towns of Onalaska & Farmington (Halfway Creek Bridge B-32-0055), Bridge Replacement, Design Obligated in 2020, Construction Obligated in 2024	Br Repl	PE																						STBG
					ROW																						
					Const																						
243-23-012	5078-00-30, 60	La Crosse County	CTH FO, CTH F – CTH OA (Construct Wider Paved Shoulders), Highway Safety Project, Design Obligated in 2023, with Construction Anticipated in 2025	Other	PE																						HSIP
					ROW																						
					Const	274.4			125.6	400.0																	
243-20-023	7323-00-01, 71	La Crosse County	CTH M, STH 16 – CTH S (La Crosse River Bridge B-32-0004), Bridge Replacement, Design Obligated in 2020, with Construction Obligated in 2023	Br Repl	PE																						STBG
					ROW																						
					Const																						
243-23-030	5991-08-10, 11	La Crosse County	CTH OT, STH 35 – CTH SN, Pavement Replacement, Design Obligated in 2023, with Construction Anticipated in 2025	Pav Repl	PE																						STBG
					ROW																						
					Const																						
243-24-028	7077-00-00, 70	La Crosse County	CTH W, CTH D – CTH M (Johnson Coulee Creek Bridge B-32-0001), Bridge Replacement, Design Anticipated in 2025, with Construction Anticipated in 2027-2028	Br Repl	PE																						STBG
					ROW																						
					Const																						
243-24-029	5991-08-12, 13	La Crosse County	CTH MH, Village of Holmen, Briggs Road to CTH HD, Pavement Replacement, Design Obligated in 2024, with Construction Anticipated in 2028	Pav Repl	PE																						STBG
					ROW																						
					Const																						
243-21-013	5991-02-61, 62	City of Onalaska	East Avenue, City of Onalaska, Riders Club Road Intersection, Design Obligated in 2021, Construction Obligated in 2023	Sys Pres	PE																						HSIP
					ROW																						
					Const																						
243-22-022	5991-02-70, 71	City of Onalaska	Theater Road, City of Onalaska, CTH OS to Midwest Drive, Resurfacing, Design Obligated in 2023, Construction Anticipated in 2025	Sys Pres	PE																						STBG
					ROW																						
					Const	349.0			87.3	436.3																	
243-22-023	5991-02-67, 68	City of Onalaska	Midwest Drive, City of Onalaska, Theater Road to Main Street, Reconstruct, Design Obligated in 2022, Construction Obligated in 2024	Reconst	PE																						STBG
					ROW																						
					Const																						
243-24-030	5991-02-77, 78	City of Onalaska	CTH SS, City of Onalaska, 12th Avenue S, to Crossing Meadow Dr., Pavement Replacement, Design Obligated in 2024, Construction Anticipated in 2027-2028	Pav Repl	PE																						STBG
					ROW																						
					Const																						
243-22-024	5991-07-60, 61, 62	City of La Crosse	6th Street, City of La Crosse, Cass Street to State Street, Reconstruct, Design Obligated in 2022, Construction Anticipated in 2025	Reconst	PE																						STBG
					ROW																						
					Const	1,848.0			961.8	2,809.8																	

July 16, 2025

*NOTE: Total Improvement Cost indicates past and future project phases which may be outside the four-year TIP cycle and is for illustrative purposes only

July 16, 2025						2025 (x\$1000)					2026 (x\$1000)					2027 (x\$1000)					2028 (x\$1000)					Source of Funds
Project Number	State ID Number	Sponsoring Agency	Project Description	Project Type	Exp. Type	Fed	WI	MN	Local / Other	Total	Fed	WI	MN	Local / Other	Total	Fed	WI	MN	Local / Other	Total	Fed	WI	MN	Local / Other	Total	
243-23-024	5991-07-77, 78, 79	City of La Crosse	Green Bay Street, City of La Crosse, 22nd Street South to Lowey Blvd., Reconstruct, Design Obligated in 2023, Construction Anticipated in 2024-2025	Reconst	PE ROW Const Total																					STBG
					PE																					
					ROW																					
					Const																					
					Total																					
243-24-031	5991-07-84, 85	City of La Crosse	Green Bay Street, City of La Crosse, 9th Street South to 14th Street S, Reconstruct, Design Obligated in 2024, Construction Anticipated in 2028	Reconst	PE ROW Const Total																1,040.0 1,040.0			645.4 645.4	1,685.4 1,685.4	STBG
					PE																					
					ROW																					
					Const																					
					Total																					
243-23-033	5991-07-80, 81	City of La Crosse	Lowey Boulevard, City of La Crosse, Main Street Intersection, Left Turn Lanes/Monotubes, Design Obligated in 2024, Construction anticipated in 2026	Sys Pres	PE ROW Const Total						1,145.0 1,145.0			184.7 184.7	1,329.7 1,329.7											HSIP
					PE																					
					ROW																					
					Const																					
					Total																					
243-23-034	5991-07-82, 83	City of La Crosse	Lowey Boulevard, City of La Crosse, Mormon Coulee Road to Ward Avenue, Reconstruct, Design Obligated in 2024, Construction anticipated in 2027 Total Improvement Cost: \$2,173,343	Reconst	PE ROW Const Total											1,710.0 1,710.0				382.4 382.4	2,092.4 2,092.4					HSIP
					PE																					
					ROW																					
					Const																					
					Total																					
243-23-025	5991-07-85, 86, 89	City of La Crosse	Monitor Street, City of La Crosse, Rose Street to Ling Drive, Reconstruct, Design Obligated in 2023, Construction Anticipated in 2027	Reconst	PE ROW Const Total											1,726.0 1,726.0				1,591.7 1,591.7	3,317.7 3,317.7					STBG
					PE																					
					ROW																					
					Const																					
					Total																					
243-19-029	7575-07-70	City of La Crosse	STH 16/35, West Ave/LaCrosse St Intersection, Left Turn Lanes/Monotubes, Design Obligated in 2019 (TIP 243-19-026), Construction Obligated in 2022.	Sys Pres	PE ROW Const Total																					HSIP
					PE																					
					ROW																					
					Const																					
					Total																					
243-25-024	1641-03-07, 77	State of Wisconsin	Mormon Coulee Road, City of La Crosse, Birch Street Intersection, Left Turn Lanes/Monotubes, Design Anticipated in 2026, Construction Anticipated in 2029/2030	Sys Pres	PE ROW Const Total			20.0 20.0		20.0 20.0																HSIP
					PE																					
					ROW																					
					Const																					
					Total																					
243-22-025	5991-00-21, 22	Village of West Salem	City Loop Drive, East Jefferson Street to Neshonok Road, Resurfacing, Design Obligated in 2022, Construction Obligated in 2024	Sys Pres	PE ROW Const Total																					STBG
					PE																					
					ROW																					
					Const																					
					Total																					
243-22-026	5991-00-25, 26, 27	Village of West Salem	Mark Street, East Garland Street to East Avenue, Pavement Replacement with Sewer/Water Replacement, Design Obligated in 2022, Construction Obligated in 2023	Pav Repl	PE ROW Const Total																					STBG
					PE																					
					ROW																					
					Const																					
					Total																					
243-21-016	5436-00-06	La Crosse County	CTH M, CTH I - CTH O, Reconstruct, Design Obligated in 2021, Construction not Currently Scheduled/Obligated	Reconst	PE ROW Const Total																					LF
					PE																					
					ROW																					
					Const																					
					Total																					
243-23-035	5436-00-05, 75	La Crosse County	CTH M, Town of Barre - Town of Bangor (Russian Coulee Crk Bridge B-32-023B, Bridge Replacement of B-32-14, Design Obligated in 2018, Construction Anticipated in 2025	Br Repl	PE ROW Const Total						948.5 948.5			238.2 238.2	1,186.7 1,186.7											STBG
					PE																					
					ROW																					
					Const																					
					Total																					
243-21-017	5436-00-07, 77	La Crosse County	CTH M, CTH I - CTH YY, Bridge Replacement of B-32-007, Design Obligated in 2021, Construction Anticipated in 2026-2027	Br Repl	PE ROW Const Total											1,036.0 1,036.0				260.1 260.1	1,296.1 1,296.1					STBG
					PE																					
					ROW																					
					Const																					
					Total																					
243-23-015	5096-00-00	La Crosse County	CTH O, CTH OA - CTH M, Bridge Replacement of B-32-020, Design Obligated in 2023, Construction not Currently Scheduled/Obligated	Br Repl	PE ROW Const Total																					LF
					PE																					
					ROW																					
					Const																					
					Total																					
243-23-029	7269-00-01, 71	La Crosse County	Casberg Coulee Road, Town of Holland, Long Coulee Creek Bridge Replacement of B-32-095, Design Obligated in 2024, Construction Obligated in 2024	Br Repl	PE ROW Const Total						68.3 68.3			13,712.8 13,712.8	1,523.7 1,523.7											STBG
					PE																					
					ROW																					
					Const																					
					Total																					
243-21-018	7272-00-02, 72	La Crosse County	Mohican Trail, Town of Onalaska, Bridge Replacement of P-32-923, Design Obligated in 2021, Construction Anticipated in 2024-2025	Br Repl	PE ROW Const Total																					STBG
					PE																					
					ROW																					
					Const																					
					Total																					
243-22-027	5346-00-01, 71	La Crosse County	Droggath Road, Town of Barre, Bostwick Creek Bridge Replacement B-32-023 (new B-32-231), Design Obligated in 2022, Construction Obligated in 2024	Br Repl	PE ROW Const Total																					STBG
					PE																					
					ROW																					
					Const																					
					Total																					
243-24-024	1009-13-61	State of Wisconsin	Various Highways, SW Region Pavement Marking (Epoxy Pavement Marking), approximately 20.7 miles of 186.3 miles is within LAPC on WIS 16 and US 14, Construction Obligated in 2024, Construction Anticipated in 24-25	Sys Pres	PE ROW Const Total																					N+PP
					PE																					
					ROW																					
					Const																					
					Total																					
243-25-022	1009-13-92	State of Wisconsin	Various Highways, SW Region Pavement Marking (Epoxy Pavement Marking), approximately 17 miles of the approximate 185 miles is within LAPC on WIS 16, WIS 33 and WIS 157, Construction Obligated in 2025, Construction Anticipated in 25-26	Sys Pres	PE ROW Const Total			948.5 948.5	666.0 666.0	1,614.5 1,614.5																N+PP
					PE																					
					ROW																					
					Const																					
					Total																					
243-23																										

July 16, 2025

***NOTE:** Total Improvement Cost indicates past and future project phases which may be outside the four-year TIP cycle and is for illustrative purposes only

July 16, 2025		2025 (x\$1000)										2026 (x\$1000)					2027 (x\$1000)					2028 (x\$1000)					Source of Funds
Project Number	State ID Number	Sponsoring Agency	Project Description	Project Type	Exp. Type	Fed	WI	MN	Local / Other	Total	Fed	WI	MN	Local / Other	Total	Fed	WI	MN	Local / Other	Total	Fed	WI	MN	Local / Other	Total		
243-24-016	1640-00-03, 73	Town of Shelby	T Shelby, Sidewalk US 14/61 - Brickyard Lane, Sidewalk Extension, Previous design see TIP #243-14-020, Construction Anticipated in 2024-2025	Other	PE ROW Const Total						Construction Continued																TAP
243-24-022	5991-07-16	City of La Crosse	C La Crosse, Bicycles & Racks (Various Locations), Bicycles & Racks Purchases, Anticipated in 2025	Other	PE ROW Const Total					11.3	56.7	Construction Continued															TAP
243-22-035	5991-07-66	City of La Crosse	City of La Crosse, Grand Crossing Trail, Myrick Park Drive to Saint James St, Bicycle/Pedestrian Multi-Use Trail, Design Obligated in 2023, Construction Anticipated in 2025-2028 *Total Improvement Cost: \$793,447	Other	PE ROW Const Total					156.3	781.7	Construction Continued															TAP
243-22-036	5991-07-72, 73	City of La Crosse	City of La Crosse, Wagon Wheel Trail, La Crescent MN to C La Crosse, Bicycle/Pedestrian Multi-Use Trail, Design Obligated in 2023, Construction Anticipated in 2025-2028	Other	PE ROW Const Total					1,002.7	5,013.1	Construction Continued															IAP
243-24-032	5991-07-86, 87	City of La Crosse	City of La Crosse, Avon Street, St. Cloud Street to Moore Street, Greenway, Design Anticipated in 2024, Construction Anticipated in 2027-2028	Other	PE ROW Const Total							Design Continued					Design Continued					707.7		176.9	884.6	Construction Continued	TAP
243-22-037	5991-06-03, 73	Town of Shelby	T Shelby, Goose Island Trail, CTH G1 to Sunnyside Drive, Bicycle/Pedestrian Multi-Use Path, Design Obligated in 2023, Construction Anticipated in 2025/2026	Other	PE ROW Const Total					71.6	358.0	Construction Continued															TAP
243-23-031	7269-00-02, 72	Town of Holland	Holland Bluff Trail, Town of Holland (Bluffview Ct. to Sylvester Rd.), Multi-Use Path, Design Obligated in 2024, Construction Anticipated in 2025-2026	Other	PE ROW Const Total					62.3	311.6	Construction Continued															TAP
243-24-033	7269-03-00, 70	Town of Holland	CTH MH, Town of Holland (Sunnyside Lane to Briggs Drive), Multi-Use Path, Design Obligated in 2024, Construction Anticipated in 2027-2028	Other	PE ROW Const Total							Design Continued					Design Continued					800.9		200.2	1,001.1	Construction Continued	TAP
243-24-034	7269-00-03, 73	Village of Holmen	Holland Bluff Trail, Village of Holmen (CTH MH to Bluffview Court), Multi-Use Path, Design Obligated in 2024, Construction Anticipated in 2025-2026	Other	PE ROW Const Total					70.8	353.8	Construction Continued										800.9		200.2	1,001.1		TAP
243-22-038	1009-22-05	City of La Crosse	City of La Crosse, Bike/Ped Plan, City of La Crosse City Wide, Bike/Pedestrian Master Plan Update, Design/Planning Obligated in 2023	Other	PE ROW Const Total					70.8	353.8	Construction Continued															TAP
243-22-039	1009-01-30	West Salem School District	West Salem SRTS Study and Program, West Salem School District, SRTS Improvements, Design/Planning Obligated in 2023	Other	PE ROW Const Total							Design Continued															TAP
243-24-035	1009-24-28	La Crosse County	Non-Infrastructure, La Crosse County, SRTS, Anticipated in 2027 and 2028, Commencement 06/2028	Other	PE ROW Const Total											402.6				503.3					Design Continued	TAP	
243-25-013		La Crosse County	LAPC's Safe Streets For All (SSAA) Comprehensive Safety Action Plan, Planning Obligated in 2025 and 2026	Other	PE ROW Const Total					70.0	350.0					402.6				503.3							SSAA

July 16, 2025

***NOTE:** Total Improvement Cost indicates past and future project phases which may be outside the four-year TIP cycle and is for illustrative purposes only.

July 16, 2025						2025 (x\$1000)					2026 (x\$1000)					2027 (x\$1000)					2028 (x\$1000)					Source of Funds		
Project Number	State ID Number	Sponsoring Agency	Project Description	Project Type	Exp. Type	Fed	WI	MN	Local / Other	Total	Fed	WI	MN	Local / Other	Total	Fed	WI	MN	Local / Other	Total	Fed	WI	MN	Local / Other	Total			
243-24-023	0900-05-47	Kwik Trip	Kwik Trip Store #762 City of La Crosse I-90 A. Install Four EV Chargers, Wisconsin Electric Vehicle Infrastructure Program. Construction Anticipated in 2024.	Other	PE																					NEVI		
					ROW Const.																							
					Total																							
243-25-020	City of La Crosse	Carbon Reduction Program (CRP), 2nd Street Cycle Track Upgrade, City of La Crosse. Market St to La Crosse St. Design/Construction Anticipated 2026-2027	Other	PE																						CRP		
				ROW Const.																								
				Total																								
243-25-021	City of Onalaska	Carbon Reduction Program (CRP), East Avenue Sidewalk, City of Onalaska, Century Pl to Flint Ct. Design/Construction Anticipated 2026-2027	Other	PE																						CRP		
				ROW Const.																								
				Total																								
243-23-016	EFL Led Project	Town of Shelby	Safe Public Rail Access (EFL Appl WI 98). New access road, parking lot and railroad crossing signals to Upper Mississippi National Wildlife Refuge (0.1 miles north of B-32-0163 on WIS 35) USF&W providing matching funding	Other	PE																					FLAP		
					ROW Const.																							
					Total																							
243-25-016	La Crosse County	Railroad Crossing Elimination (RCE) Planning Grant, Brice Prairie Rail Safety and Grade Separation Plan, Comprehensive Planning and Environmental Linkages (PEL) Study, Planning Anticipated in 2026-2027	Rail	PE																						RCE		
				ROW Const.																								
				Total																								
243-21-022	1000-74-00, 20, 21, 40, 41, 50, 51, 53, 54, 55, 56, 70, 72, 1000-75-01, 52, 46, 1000-77-01, 51, 52, 53, 54, 1000-78-01, 51, 52, 53, 54, 55, 56, 57, 58, 59, 1000-79-01	State of Wisconsin	Railroad Crossing Improvement, TCMC Intercity Passenger Rail Grant, La Crosse - St. Paul (2nd Roundtrip). Design Obligated in 2021-2022, ROW Scheduled in 2025, Construction Obligated in 2024-2026 (const. until 2029)	Rail	PE																					Rail Safety		
					ROW Const.	833.8	568.3	556.0	1,958.1																			
					Total	24,122.7	5,176.5	9,986.1	3,850.0	42,755.3	2,674.3	632.9	1,150.0	4,457.2														
					Const.	24,122.7	5,176.5	9,986.1	3,850.0	42,755.3	2,674.3	632.9	1,150.0	4,457.2														
					Total	24,996.51	5,748.9	10,142.1	3,850.0	44,693.4	2,674.3	632.9	1,150.0	4,457.2														
243-24-015	5991-06-10	State of Wisconsin	Town of Shelby, Losey Boulevard (BNSF RR Xing 079827S), Geometric Improvements, Design Obligated in 2024, Construction not Currently Scheduled/Obligated	Rail	PE																					Rail Safety		
					ROW Const.																							
					Total																							
243-21-023	5991-05-52	State of Wisconsin	Town of Shelby, Losey Boulevard (BNSF RR Xing 079827S), Signal Replacement, Construction Anticipated in 2025	Rail	PE																					Rail Safety		
					ROW Const.																							
					Total																							
243-24-018	5991-00-51	State of Wisconsin	Village of West Salem, Leonard Street (Soo Line RR Xing 390502B), Railroad Warning Device, Construction Anticipated in 2024-2025	Rail	PE																					Rail Safety		
					ROW Const.																							
					Total																							
243-24-019	5991-00-52	State of Wisconsin	Village of West Salem, Mill Street (Soo Line RR Xing 390917T), Railroad Warning Device, Construction Anticipated in 2024-2025	Rail	PE																					Rail Safety		
					ROW Const.																							
					Total																							
243-24-020	5991-00-50	State of Wisconsin	Village of West Salem, CTH B/Oak Avenue (Soo Line RR Xing 390621H), Railroad Warning Device, Construction Anticipated in 2024-2025	Rail	PE																					Rail Safety		
					ROW Const.																							
					Total																							
243-24-021	5349-02-51	State of Wisconsin	Town of Hamilton, Linne Road (Soo Line RR Xing 390914X), Railroad Warning Device, Construction obligated in 2024	Rail	PE																					Rail Safety		
					ROW Const.																							
					Total																							
243-22-028	5991-07-46	State of Wisconsin	City of La Crosse, Sims Place (BNSF RR Xing 917431D), Add Roadway Median/Misc, Construction Obligated in 2023	Rail	PE																					Rail Safety		
					ROW Const.																							
					Total																							
243-22-020	5991-05-53	State of Wisconsin	City of La Crosse, Sims Place (BNSF RR Xing 917431D), Railroad Operations/Replace Signals, Add Gates/Misc, Construction Obligated in 2023	Rail	PE																					Rail Safety		
					ROW Const.																							
					Total																							

2025-2028 Transportation Improvement Program Project List						*NOTE: Total Improvement Cost indicates past and future project phases which may be outside the four-year TIP cycle and is for illustrative purposes only.																				Source of Funds		
Project Number	State ID Number	Sponsoring Agency	Project Description	Project Type	Exp. Type	2025 (x\$1000)					2026 (x\$1000)					2027 (x\$1000)					2028 (x\$1000)							
						Fed	WI	MN	Local / Other	Total	Fed	WI	MN	Local / Other	Total	Fed	WI	MN	Local / Other	Total	Fed	WI	MN	Local / Other	Total			
MINNESOTA PROJECTS						2025					2026					2027					2028							
243-25-017		City of La Crescent	RAILROAD CROSSING ELIMINATION (RCE) PLANNING GRANT; LA CRESCENT RAIL CORRIDOR SAFETY IMPROVEMENTS, PLANNING ANTICIPATED IN 2027- 2027	Rail	PE						229.6				57.4	287.0	Design Continued											RCE
					OA																							
					CAPT																							
					TOTAL						229.6				57.4	287.0												
243-25-025	236-591-003	City of La Crescent	CITY OF LA CRESCENT - SAFE ROUTES TO SCHOOL, CONSTRUCT 8 WALKING AND BIKING STRUCTURES	Other	PE																						TAP	
					ROW																							
					CAPT																							
					TOTAL																							
243-09-015	TRF-3780-24, 25, 26, 27	City of La Crescent	SECT 5307: City of La Crescent Transit Operating Assistance	Transit	PE																						5307	
					OA	86.3			304.3	390.7	86.3				313.4	399.0	86.3			326.3	411.6	86.3			337.4	423.0		
					CAPT																							
					TOTAL	86.3			304.3	390.7	86.3				313.4	399.0	86.3			326.3	411.6	86.3			337.4	423.0		
243-24-025	236-080-005, 006	City of La Crescent	**CRP** City of La Crescent: Lease 2 Electric Vehicles for Municipal Use	Other	PE																					CRP		
					OA																							
					CAPT	16.0			6.0	22.0	16.0				6.0	22.0												
					TOTAL	16.0			6.0	22.0	16.0				6.0	22.0												
243-24-037	8806-CRPLA-27, 28	State of Minnesota	**CRP** LAPC CARBON REDUCTION SET ASIDE	Other	PE																					CRP		
					OA																							
					CAPT																							
					TOTAL																							
243-25-026	8581-01	State of Minnesota	RESURFACE MAINLINE BRIDGES ON I-90 OVER MISSISSIPPI, DRESSBACH BRIDGES 85801 & 85802 (Ref. TIP #s 243-04-026)	Br Rehab	PE																					NHPP		
					ROW																							
					CAPT																							
					TOTAL																							
243-24-038	2805-75	State of Minnesota	**ELLE** ON MN 16 FROM 0.37 MI. W. TH 61 TO TH 61, ON TH 61 FROM 0.3 MI E TH 16/61 TO 4TH ST. LT. BITUMINOUS MILL AND OVERLAY	Pav Repl	PE																					NHPP		
					ROW																							
					Const																							
					TOTAL																							

2025-2028 Transportation Improvement Program Project List

July 16, 2025			*NOTE: Total Improvement Cost indicates past and future project phases which may be outside the four-year TIP cycle and is for illustrative purposes only.															Source of Funds											
Project Number	State ID Number	Sponsoring Agency	Project Description	Project Type	Exp. Type	2025 (x\$1000)					2026 (x\$1000)					2027 (x\$1000)					2028 (x\$1000)								
						Fed	WI	MN	Local / Other	Total	Fed	WI	MN	Local / Other	Total	Fed	WI		MN	Local / Other	Total	Fed	WI	MN	Local / Other	Total			
WISCONSIN TRANSIT PROJECTS																													
243-03-037		La Crosse County	MiniBus, Volunteer Driver	Transit	PE																						SF		
					OA							293.8			58.8	352.6			293.8			58.8	352.6			293.8		58.8	352.6
					CAPT										58.8	352.6			293.8			58.8	352.6			293.8		58.8	352.6
					TOTAL							293.8			58.8	352.6			293.8			58.8	352.6			293.8		58.8	352.6
243-03-039	City of LaCrosse		MTU Operating Assistance	Transit	PE																						5307		
					OA	2,794.8	1,108.5		1,686.3	5,589.6	2,794.8	1,108.5		1,686.3	5,589.6	2,794.8	1,108.5		1,686.3	5,589.6	2,794.8	1,108.5		1,686.3	5,589.6				
					CAPT																								
					TOTAL	2,794.8	1,108.5		1,686.3	5,589.6	2,794.8	1,108.5		1,686.3	5,589.6	2,794.8	1,108.5		1,686.3	5,589.6	2,794.8	1,108.5		1,686.3	5,589.6				
243-23-012	City of LaCrosse		Two (2) Hybrid Replacement Buses	Transit	PE																						5339		
					OA																								
					CAPT		1.3			579.0		580.2																	
					TOTAL		1.3			579.0		580.2																	
243-24-012	City of La Crosse		MTU AVL (automatic vehicle location) System	Transit	PE																						5307		
					OA																								
					CAPT																								
					TOTAL																								
243-23-013	City of La Crosse		Two (2) Clean Diesel Buses, City of La Crosse, Public Transportation, Obligation Anticipated in 2023	Transit	PE																						5339		
					OA																								
					CAPT	884.5				356.8	1,241.3																		
					TOTAL	884.5				356.8	1,241.3																		
243-25-019		CouleeCap	Vehicle Loans, Operating Assistance (WETAP), Crawford, La Crosse, Monroe, and Vernon Counties	Transit	PE																						SF		
					OA		33.2			33.2	66.4																		
					CAPT		62.4			15.6	78.0																		
					TOTAL		95.6			48.8	144.4																		
243-22-013	Vernon County		Mobility Management, Volunteer Driver Program and Vernon County Mini Bus. Serves locations in La Crosse Area	Transit	PE																						5310		
					OA		22.5			5.6	28.2																		
					CAPT																								
					TOTAL		22.5			5.6	28.2																		
243-25-014	Vernon Area Rehabilitation Center		One (1) medium-large bus replacement vehicle.	Transit	PE																						5310		
					OA																								
					CAPT	112.9				37.6	150.5																		
					TOTAL	112.9				37.6	150.5																		
243-22-015	Aptiv, Inc.		One (1) Bariatric Van, Side-load. Serves La Crosse, Monroe, Jackson, and Walworth Counties	Transit	PE																						5310		
					OA																								
					CAPT																								
					TOTAL																								
243-23-017	Aptiv, Inc.		One (1) Bariatric Van, Side-load. Vehicle Replacement. Serves La Crosse, Monroe, Jackson, and Walworth Counties	Transit	PE																						5310		
					OA																								
					CAPT																								
					TOTAL																								
243-22-016	Monroe County		One (1) Bariatric Van, Side-load. Serves La Crosse and Monroe Counties	Transit	PE																						5310		
					OA																								
					CAPT																								
					TOTAL																								
243-23-018	Center for Independent Living		Call Center, Mobility Management and Operating Assistance. Serves La Crosse County and 41 Other Wisconsin Counties	Transit	PE																						5310		
					OA	229.6				229.6	459.2																		
					CAPT	86.1				21.5	107.6																		
					TOTAL	315.7				251.1	566.8																		
243-23-019		Tri-State Ambulance	One (1) Rear-Entry Minivan, Vehicle Replacement. Serves Vernon and La Crosse Counties	Transit	PE																						5310		
					OA																								
					CAPT																								
					TOTAL																								
243-25-023	5331S25-CRS13	La Crosse County	Purchase Replacement Std 30 Ft Bus	Transit	PE																						5311		
					OA																								
					CAPT	160.0				40.0	200.0																		
					TOTAL	160.0				40.0	200.0																		
243-23-028	5311523-26a	La Crosse County	Lease - Replacement ~30' Buses	Transit	PE																						5311		
					OA																								
					CAPT																								
					TOTAL																								
243-25-015		Monroe County	One (1) High Roof Rear Entry Transit Vehicle Replacement. Serves La Crosse and Monroe Counties	Transit	PE																						5310		
					OA																								
					CAPT	62.4				20.8	83.1																		
					TOTAL	62.4				20.8	83.1																		
243-24-036	5991-02-41	City of Onalaska	Two (2) Transit Vans, City of Onalaska, OHWS Public Transit, Obligation Anticipated in 2027	Transit	OA																						TAP		
					CAPT																								
					TOTAL																								
					PE																								
243-13-013		La Crosse County	Scenic Mississippi Regional Transit (SMRT) La Crosse, Crawford, Monroe, and Vernon Counties	Transit	OA	277.9	38.2			239.7	555.8	277.9	38.2			239.7	555.8	277.9	38.2			239.7	555.8	277.9	38.2		239.7	555.8	5311
					CAPT																								
					TOTAL	277.9	38.2			239.7	555.8	277.9	38.2			239.7	555.8	277.9	38.2			239.7	555.8	277.9	38.2		239.7	555.8	
					PE																								
243-03-043	11.12.15 11.93.02	City of Onalaska	Onalaska / Holman / West Salem Public Transit. Operating Assistance	Transit	OA	405.0	196.2			252.0	853.3	405.0	196.2			252.0	853.3	405.0	196.2			252.0	853.3	405.0	196.2		252.0	853.3	5307
					CAPT																								
					TOTAL	405.0	196.2			252.0	853.3	405.0	196.2			252.0	853.3	405.0	196.2			252.0	853.3	405.0	196.2		252.0	853.3	
					PE																								

2026-2029 Minnesota Transportation Improvement Program Project List

July 16, 2025

Project Number	State ID Number	Sponsoring Agency	Project Description	Project Type	Exp. Type	Fed	WI	MN	Local / Other	Total	Fed	WI	MN	Local / Other	Total	Fed	WI	MN	Local / Other	Total	Fed	WI	MN	Local / Other	Total	Source of Funds	
MINNESOTA PROJECTS						2026					2027					2028					2029						
243-25-017		City of La Crescent	RAILROAD CROSSING ELIMINATION (RCE) PLANNING GRANT, LA CRESCENT RAIL CORRIDOR SAFETY IMPROVEMENTS, PLANNING ANTICIPATED IN 2027-2027	Rail	ROW Const	229.6			57.4	287.0																RCE	
					TOTAL	229.6			57.4	287.0																	
243-25-025	236-591-003	City of La Crescent	CITY OF LA CRESCENT - SAFE ROUTES TO SCHOOL, CONSTRUCT 8 WALKING AND BIKING STRUCTURES	Other	ROW Const	223.3			223.9	447.2																TAP	
					TOTAL	223.3			223.9	447.2																	
243-09-015	TRF-3780-24, 25, 26, 27	City of La Crescent	SECT 5307: City of La Crescent Transit Operating Assistance	Transit	PE																						
					DA	86.3			313.4	399.8	86.3			325.3	411.6	86.3				337.4	423.8	86.3			350.0	436.3	5307
					CAPT	86.3			313.4	399.8	86.3			325.3	411.6	86.3				337.4	423.8	86.3			350.0	436.3	
					TOTAL	86.3			313.4	399.8	86.3			325.3	411.6	86.3				337.4	423.8	86.3			350.0	436.3	
243-24-025	236-080-005, 006	City of La Crescent	**CRP** City of La Crescent: Lease 2 Electric Vehicles for Municipal Use	Other	PE																					CRP	
					DA																						
					CAPT	16.0			6.0	22.0																	
					TOTAL	16.0			6.0	22.0																	
243-24-037	6806-CRPLA-27, 28, 2029	State of Minnesota	**CRP** LAPC CARBON REDUCTION SET ASIDE	Other	PE																					CRP	
					DA																						
					CAPT					9.0				9.0	12.0						12.0	12.0			12.0		
					TOTAL					9.0				9.0	12.0						12.0	12.0			12.0		
243-25-026	8581-01	State of Minnesota	RESURFACE MAINLINE BRIDGES ON I-90 OVER MISSISSIPPI, DRESBACH BRIDGES 65001 & 65002 (Ref. TIP #s 243-24-026 & 243-24-018)	Sys Pres/Br Rehab	PE																					NHPP	
					ROW Const											3,375.0	0.0	375.0	3,750.0	7,500.0							
					TOTAL											3,375.0	0.0	375.0	3,750.0	7,500.0							
243-25-027	236-090-006	City of La Crescent	CITY OF LA CRESCENT - TRAIL EXTENSION ALONG CHESNUT ST AND HWY 16	Other	PE																					TAP	
					ROW Const																1,575.0			525.0	2,100.0		
					TOTAL																1,575.0			525.0	2,100.0		
243-24-038	2605-75	State of Minnesota	**ELLE** ON MN 16 FROM 0.37 MI. W. TH 61 TO TH 61, ON TH 61 FROM 0.3 MI E TH 1681 TO 4TH ST. LT, BITUMINOUS MILL AND OVERLAY	Pav Repl	PE																					NHPP	
					ROW Const											1,954.1		445.9	100.0	2,500.0							
					TOTAL											1,954.1		445.9	100.0	2,500.0							