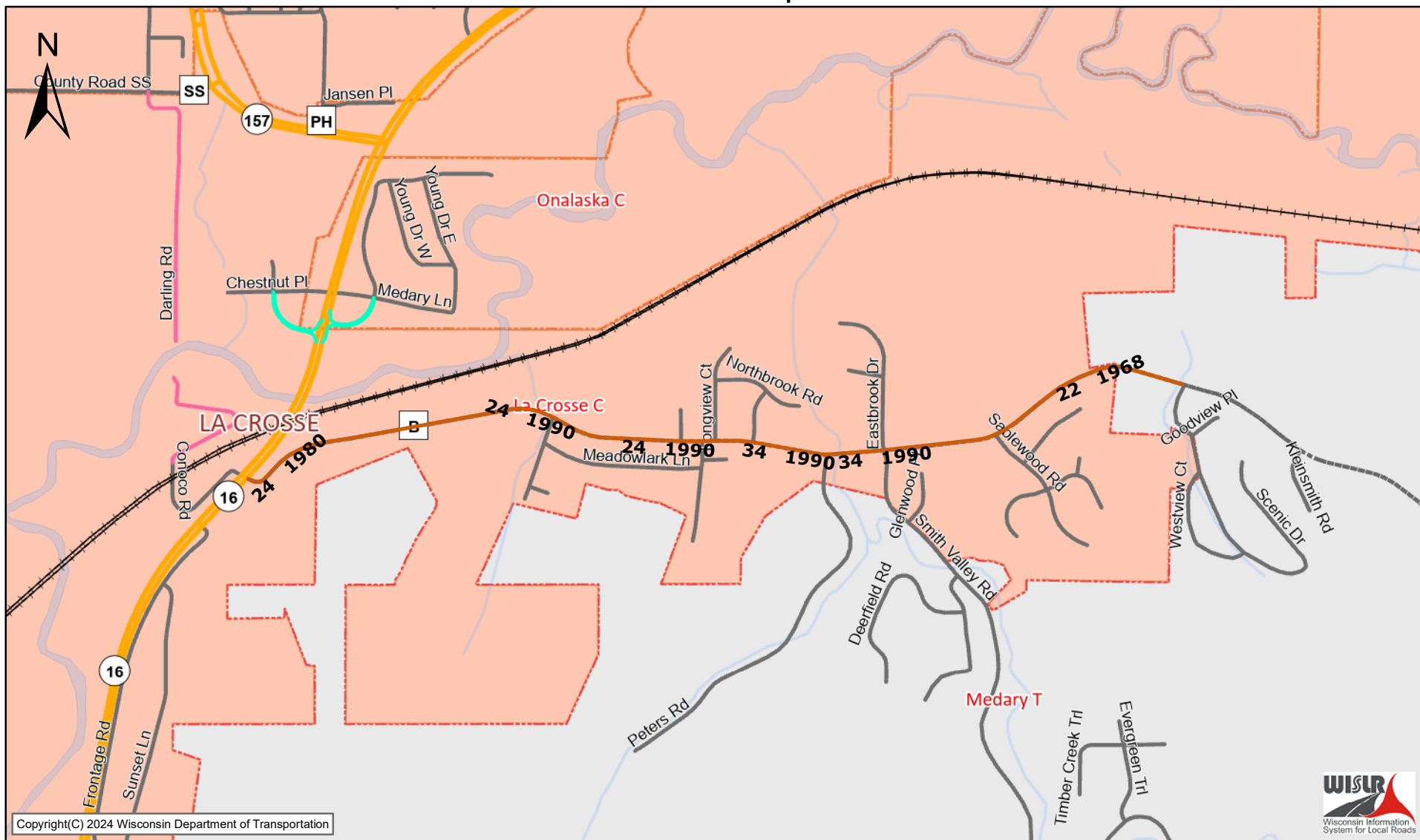


PRELIMINARY ESTIMATE FOR LOCAL PROGRAM ROADWAY PROJECTS				
Item	Quantity	Unit of Measure	Unit Price	Cost
REMOVALS				
Removing Asphalt Milling 5"	39000	Sq. Yard	6	234000
Curb and Gutter	0	Feet		0
Sidewalk	0	Sq. Feet		0
Guardrail	0	Feet		0
Manholes/Inlets	0	Each		0
Culvert Pipes	0	Each		0
EARTHWORK				
Common Excavation (Cut)	0	Cubic Yard		0
Borrow Excavation (Fill)	0	Cubic Yard		0
Rock Excavation	0	Cubic Yard		0
ROADWAY				
Base Aggregate Dense	0	Ton		0
Asphalt Pavement	12000	Ton	125	1500000
Concrete Pavement	0	Sq. Yard		0
Curb and Gutter	0	Feet		0
Sidewalk	1000	Sq. Feet	40	40000
Beam Guard	0	Feet		0
Beam Guard Terminals	0	Each		0
DRAINAGE				
Storm Sewer MH adjust	20	Feet	300	6000
Adjust Water Valves	12	Each	200	2400
Sanitary Manholes Covers	20	Each	300	6000
Culvert Pipe	0	Feet		0
SIGNING AND MARKING				
Signs	0	Each		0
Pavement Marking	1	Lump Sum	25000	25000
ELECTRICAL				1813400
Traffic Signals	0	Lump Sum		
Street Lighting	0	Lump Sum		
BRIDGES & BOX CULVERTS				
OTHER SIGNIFICANT ITEMS				
Traffic Control	2%			36268
Erosion Control	1%			18134
Staking	2%			36268
Subtotal ----->				1904070
Mobilization ----->				70000
Misc. Items -----				38081.4
TOTAL ----->				2012151.4

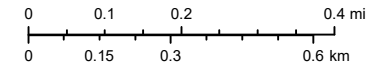
WISLR Map



Copyright(C) 2024 Wisconsin Department of Transportation



The information contained in this data set and information produced from this dataset were created for the official use of the Wisconsin Department of Transportation (WisDOT). Any other use while not prohibited, is the sole responsibility of the user. WisDOT expressly disclaims all liability regarding fitness of use of the information for other than official WisDOT business. Map created on September 17, 2023



wislr-f12

- | | | | | |
|----------------------------|---------------|---------------------|-----------------------|------------------------------|
| USH Highway | Connector | County Roads | Local Roads | Cities/Villages/Towns |
| 70 HMAC | Frontage Road | County Trunk Hwy | Municipal/Local Roads | City |
| Railroads | Wayside | County Forest Roads | Ineligible Roads | Village |
| State Trunk Network | Rest Area | Other County Roads | Rivers | Town |
| Interstate Highway | On-Off Ramp | Lakes | Counties | |
| | Weigh Station | | | |