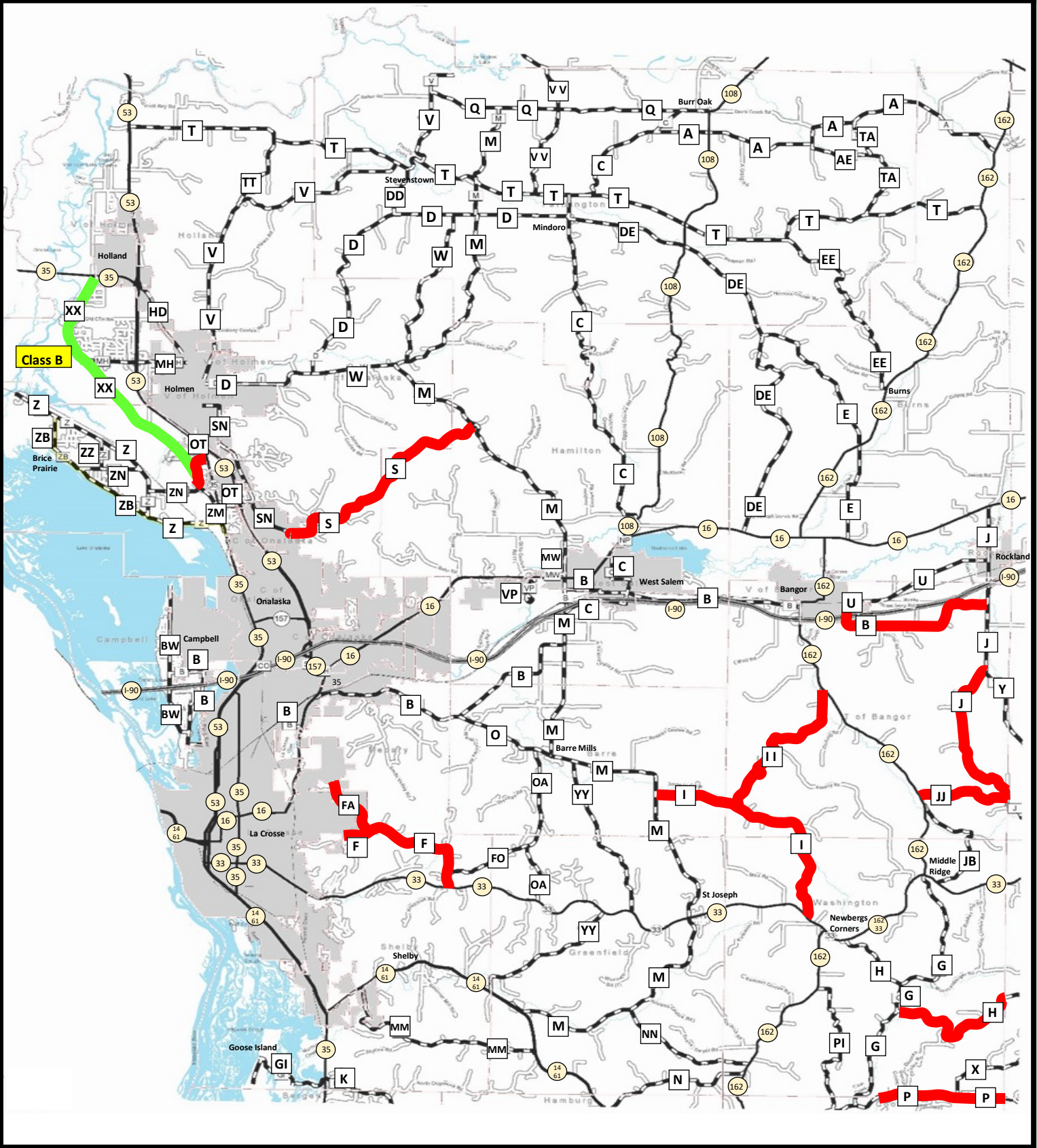
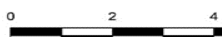


# La Crosse County Highway Weight Restrictions 2023



LA CROSSE COUNTY

Base Map: Highway Map of La Crosse County  
1946 Modifications: April 2022 CAWS  
Filename: Weight Restrictions 2023 Map



Approximate Scale in miles



█ Class B Weight Restriction

█ Weight Restriction

S

16

County HWY Letter  
State HWY Number

\* Jan 30, 2023 CTH B from CTH M to  
CTH C is transferred to West Salem

TOTAL NUMBER OF AXLES	MAXIMUM GROSS WEIGHT
Two (2) Axles	8 Tons (16,000 lbs.)
Three (3) or More Axles (Straight Truck)	13 Tons (26,000lbs.)
Combination Vehicles (Tractor & Trailer)	18 Tons (36,000 lbs.)