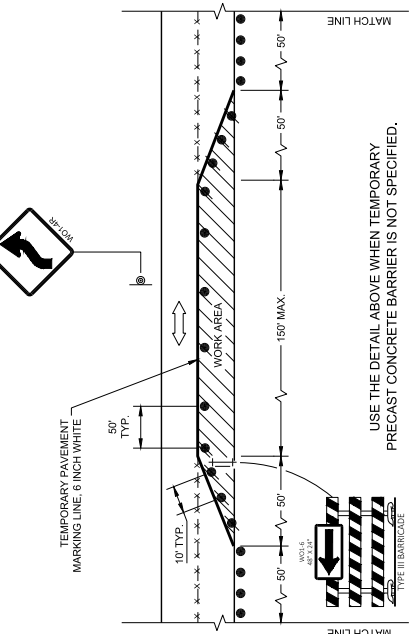


GENERAL NOTES

- 1 THE EXACT NUMBER, LOCATION, AND SPACING OF ALL SIGNS AND DEVICES SHALL BE ADJUSTED TO FIT FIELD CONDITIONS AS APPROVED BY THE ENGINEER.
- 2 THE SPACING BETWEEN TRAFFIC CONTROL SIGNS SHOULD BE ADJUSTED TO NOT CONFLICT WITH AND TO MAINTAIN A MINIMUM OF 200 FEET (60 METERS) CLEARANCE TO EXISTING SIGNS THAT WILL REMAIN IN PLACE.
- 3 THIS LANE CLOSURE IS TYPICAL FOR CLOSING RIGHT LANE - REVERSE FOR CLOSING LEFT LANE.
- 4 ALL SIGNS ARE 48" X 48" UNLESS OTHERWISE NOTED.
- 5 "W" IS THE SAME AS "W" EXCEPT THE BACKGROUND IS ORANGE.
- 6 ANY SIGNS TEMPORARY OR EXISTING WHICH CONFLICT WITH TRAFFIC CONTROL "IN USE" SHALL BE REMOVED OR COVERED AS NEEDED OR AS APPROVED BY THE ENGINEER.
- 7 REMOVE PAVEMENT MARKINGS AND PLACE TEMPORARY PAVEMENT MARKING LINES IF LANE CLOSURE IS TO BE IN PLACE FOR 4 OR MORE CONTINUOUS DAYS AND NIGHTS.
- 8 500 FOOT SPACING SHOWN IS FOR ROADWAYS WITH A PRE-CONSTRUCTION REGULATORY SPEED LIMIT OF 45 MPH OR MORE. FOR 35 - 40 MPH, USE 350 FOOT TYPICAL SPACING. FOR 25 - 30 MPH, USE 200 FOOT TYPICAL SPACING.
- 9 DIMENSION DETERMINED BY CBTP PAPER FROM EDGE LINE TO TANGENT SECTION OF THE ROAD.
- 10 TEMPORARY PAVEMENT MARKING LINE, 6 INCH WHITE STOP LINE.
- 11 700 FOOT TEMPORARY PAVEMENT MARKING LINE, 6 INCH DOUBLE YELLOW, WHEN THE DISTANCE FOR THE PRECEDING NO-PASSING ZONE IS LESS THAN THE MINIMUM DISTANCE BETWEEN ZONES AS INDICATED IN THE SPECIFICATIONS, THE TWO ZONES SHALL BE CONNECTED.
- 12 SEE SDD 15002 - SHEET "F" FOR ADVANCED WIDTH RESTRICTION SIGNING.



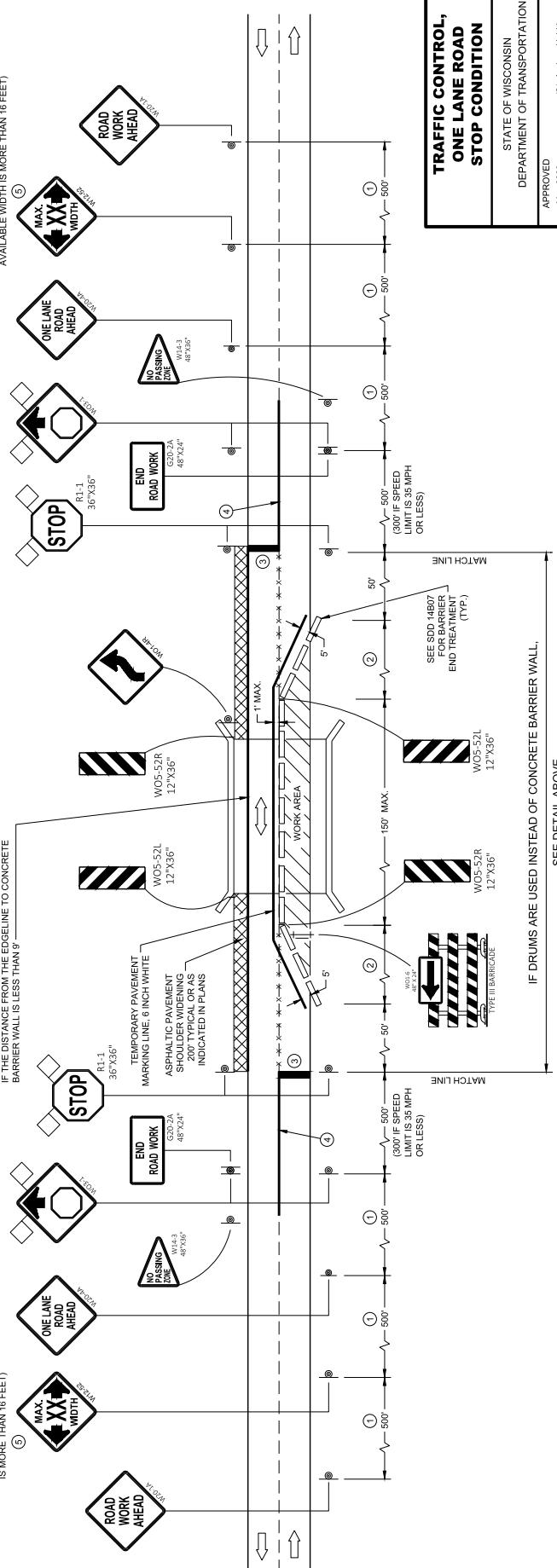
USE THE DETAIL ABOVE WHEN TEMPORARY PRECAST CONCRETE BARRIER IS NOT SPECIFIED.

LEGEND

- TYPE III BARRICADE WITH ATTACHED SIGN
- SIGN ON PERMANENT SUPPORT
- TRAFFIC CONTROL DRUM WITH TYPE "C" STEADY BURN LIGHT
- TRAFFIC CONTROL DRUM
- FLAGS, 16" X 16" MIN. (ORANGE)
- REMOVING PAVEMENT MARKING
- DIRECTION OF TRAFFIC
- ASPHALTIC PAVEMENT WIDENING
- CONCRETE BARRIER TEMPORARY PRECAST

WIDTH ON SIGN TO BE LESS THAN AVAILABLE WIDTH (OMIT IF AVAILABLE WIDTH IS MORE THAN 16 FEET)

TEMPORARY PAVEMENT MARKING LINE, 6 INCH WHITE, (W05-52R OR W05-52L) AND DOUBLE YELLOW EDGE LINE AND OFFSET TEMPORARY EDGE LINE IF THE DISTANCE FROM THE EDGE LINE TO CONCRETE BARRIER WALL IS LESS THAN 9'



IF DRUMS ARE USED INSTEAD OF CONCRETE BARRIER WALL, SEE DETAIL ABOVE

**TRAFFIC CONTROL,
ONE LANE ROAD
STOP CONDITION**

STATE OF WISCONSIN
DEPARTMENT OF TRANSPORTATION

APPROVED _____ /S/ Andrew Heddie
DATE _____ WORK ZONE ENGINEER 120
PWA