

# CTH V (LONG COULEE ROAD) UTILITY PROJECT

## VILLAGE OF HOLMEN LA CROSSE COUNTY, WISCONSIN



*Tim Mikonowicz*  
01/18/2022



PROJECT  
LOCATION



### LOCATION MAP

NOT TO SCALE

### SHEET INDEX

G - GENERAL SHEETS	
G 1	TITLE SHEET
G 2	PROJECT OVERVIEW
G 3 - 4	TYPICAL SECTIONS
G 5 - 6	EROSION CONTROL DETAILS
G 7	WATER MAIN DETAILS
G 8	SANITARY SEWER DETAILS
G 9	STORM SEWER
G 10	CURB RAMP DETAILS
G 11	STREET DETAILS
G 12	DETOUR PLAN
G 13	TRAFFIC CONTROL DETAILS - CONSTRUCTION STAGES
G 14	INTERSECTION DETAILS - CTH V AND KEPPLE RD
ST - SITE PLANS	
ST1	EVERGREEN TRAIL SITE PLAN
ST2	EVERGREEN TRAIL EXTENSION STORM SEWER SITE PLAN
TC - TRAFFIC CONTROL	
TC1-3	TRAFFIC CONTROL DETAILS
EC - EROSION CONTROL	
EC 1	CTH V - EROSION CONTROL PLAN
EC 2	KEPPLE RD - EROSION CONTROL PLAN
EC 3	AG FAMILY FARMS - EROSION CONTROL PLAN
DM - DEMOLITION PLAN	
DM 1	CTH V - DEMOLITION PLAN
DM 2	KEPPLE RD - DEMOLITION PLAN
DM 3	AG FAMILY FARMS - DEMOLITION PLAN
PV - PAVEMENT MARKING & SIGNAGE PLANS	
PV 1 - 2	CTH V PAVEMENT MARKING PLAN
PM - PROCESS MECHANICAL	
PM 1	KEPPLE ROAD LIFT STATION PLAN
PM 2	KEPPLE ROAD LIFT STATION DETAILS
PM 3	NEUMANN DEVELOPMENT LIFT STATION PLAN
PM 4	NEUMANN DEVELOPMENT LIFT STATION DETAILS
E - ELECTRICAL	
E 1 - 2	ELECTRICAL ABBREVIATIONS & SYMBOLS
E 3	ELECTRICAL SITE PLAN - KEPPLE ROAD LIFT STATION
E 4	ELECTRICAL SITE PLAN - NEUMANN LIFT STATION
E 5	LIFT STATION P&ID
E 6	ONE LINE DIAGRAM
E 7	SCHEDULES
E 8 - 9	ELECTRICAL DETAILS
PP - PLAN & PROFILE	
PP 1 - 5	PLAN AND PROFILE - CTH V
PP 6 - 9	PLAN AND PROFILE - KEPPLE ROAD
PP 10	PLAN AND PROFILE - NEUMANN LIFT STATION
PP 11	PLAN AND PROFILE - E MCHUGH ST AND W MCHUGH ST
PP 12	PLAN AND PROFILE - JUNIPER LN
PP 13	PLAN AND PROFILE - MARIE DR
PP 14 - 17	PLAN AND PROFILE - AG FAMILY FARMS
CS - CROSS SECTIONS	
CS 1 - 27	CROSS SECTIONS - CTH V
CS 28 - 56	CROSS SECTIONS - KEPPLE RD
CS 57 - 79	CROSS SECTIONS - AG FAMILY FARMS TRAIL

### LEGEND

	EXISTING WATER MAIN
	EXISTING WATER MAIN, VALVE & HYDRANT
	EXISTING WATER SERVICE & CURB STOP
	PROPOSED WATER MAIN, VALVE, & HYDRANT
	PROPOSED WATER SERVICE & CURB STOP
	EXISTING SANITARY SEWER & MANHOLE
	PROPOSED SANITARY SEWER & MANHOLE
	EXISTING FORCEMAIN
	EXISTING STORM SEWER & INLET
	PROPOSED STORM SEWER & INLET
	PROPOSED STORM SEWER & MANHOLE
	BURIED ELECTRIC
	BURIED GAS & VALVE
	BURIED CABLE TELEVISION
	BURIED TELEPHONE
	BURIED FIBER OPTICS
	OVERHEAD UTILITY
	RAILROAD TRACKS
	EXISTING CURB & GUTTER
	PROPOSED CURB & GUTTER
	EXISTING SIDEWALK
	PROPOSED SIDEWALK
	EXISTING CULVERT PIPE
	PROPOSED CULVERT PIPE
	FENCE LINE
	DRAINAGE ARROW
	SILT FENCE
	RIGHT-OF-WAY
	BASLINE
	PROPERTY LINE
	TREE LINE
	BENCHMARK
	IRON PIPE
	IRON ROD
	CONTROL POINT
	UTILITY POLE & GUY
	SOIL BORING
	LIGHT POLE
	PEDESTAL
	STREET SIGN
	MAILBOX
	FLAGPOLE
	TREE - DECIDUOUS
	TREE - CONIFEROUS
	TREE TO BE REMOVED

### UTILITIES

<u>GAS:</u>	MIDWEST NATURAL GAS CO. 3600 WI-157 LA CROSSE, WI 54601 ATTN: RICK SCHERMERHORN 608-780-0210
<u>ELECTRIC:</u>	RIVERLAND ENERGY COOPERATIVE 1472 WI-35 ONALASKA, WI 54650 ATTN: BILL MASON
<u>ELECTRIC:</u>	XCEL ENERGY 4412 WI-33 BANGOR, WI 54614 ATTN: NICHOLAS JOHNSON 608-789-3679
<u>TELEPHONE:</u>	CENTURYLINK 311 SOUTH COURT SPARTA, WI 54656 ATTN: BRIAN STELPLUGH 608-615-4136
<u>SEWER &amp; WATER:</u>	VILLAGE OF HOLMEN 421 SOUTH MAIN STREET P.O. BOX 158 ATTN: PETE MEZERA, DPW 608-526-6308
<u>CATV:</u>	CHARTER COMMUNICATIONS 1228 12TH AVE. SOUTH ONALASKA, WI 54650 ATTN: PERRY MCCLELLAN 608-317-6213



Dial **811** or (800) 242-8511

[www.DiggersHotline.com](http://www.DiggersHotline.com)

NOTE:  
UTILITY LOCATIONS SHOWN ON PLANS ARE APPROXIMATE AND CONTRACTOR  
SHALL HAVE APPROPRIATE UTILITY MARK EXACT LOCATIONS PRIOR TO  
CONSTRUCTION.

PROJECT DATE	DRAWN BY	NO.	DATE	REVISION	BY
PROJECT DATE: JANUARY 2022	DRAWN BY: SRP				
	DESIGNED BY: MJM				
	CHECKED BY: GB				

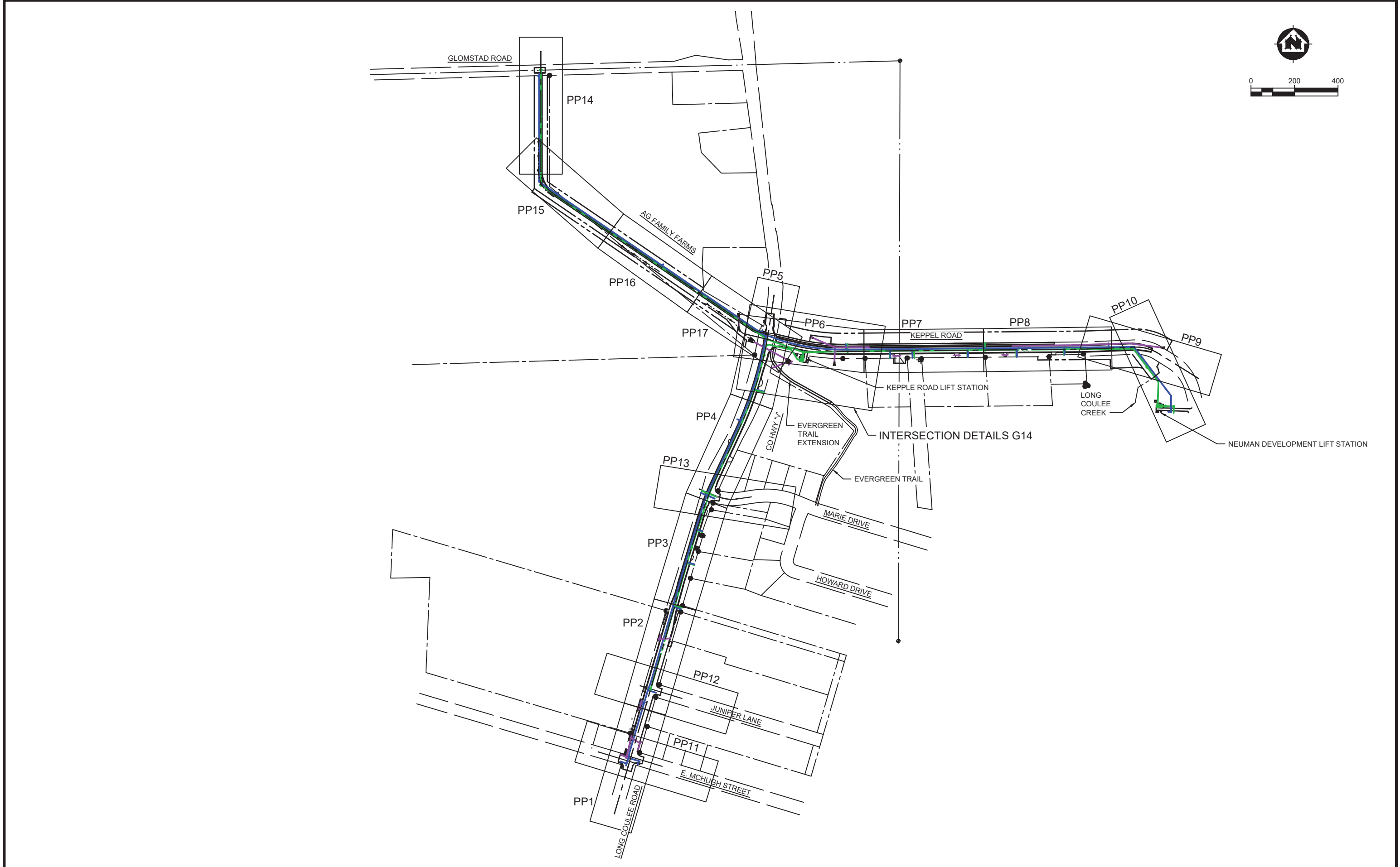


ENGINEERING | ARCHITECTURE | SURVEYING  
FUNDING | PLANNING | ENVIRONMENTAL  
1230 South Boulevard, Baraboo WI 53913  
(608) 356-2771 [www.msa-ps.com](http://www.msa-ps.com)  
© MSA Professional Services, Inc.

CTH V (LONG COULEE ROAD) UTILITY PROJECT  
VILLAGE OF HOLMEN  
LA CROSSE COUNTY, WI

TITLE SHEET

PROJECT NO:  
07197060  
SHEET  
G1



PROJECT DATE: JANUARY 2022	DRAWN BY: SRP	NO.	DATE	REVISION	BY:
	DESIGNED BY: MJM	-	-		-
	CHECKED BY: GB	-	-		-
PLOT DATE: 1/17/2022 4:14 PM, G:\07\0719707197060\CADD\Construction Documents\07197060 Overview Map.dwg					



ENGINEERING | ARCHITECTURE | SURVEYING  
FUNDING | PLANNING | ENVIRONMENTAL  
1230 South Boulevard, Baraboo WI 53913  
(608) 356-2771 www.msa-ps.com  
© MSA Professional Services, Inc.

CTH V (LONG COULEE ROAD) UTILITY PROJECT

VILLAGE OF HOLMEN

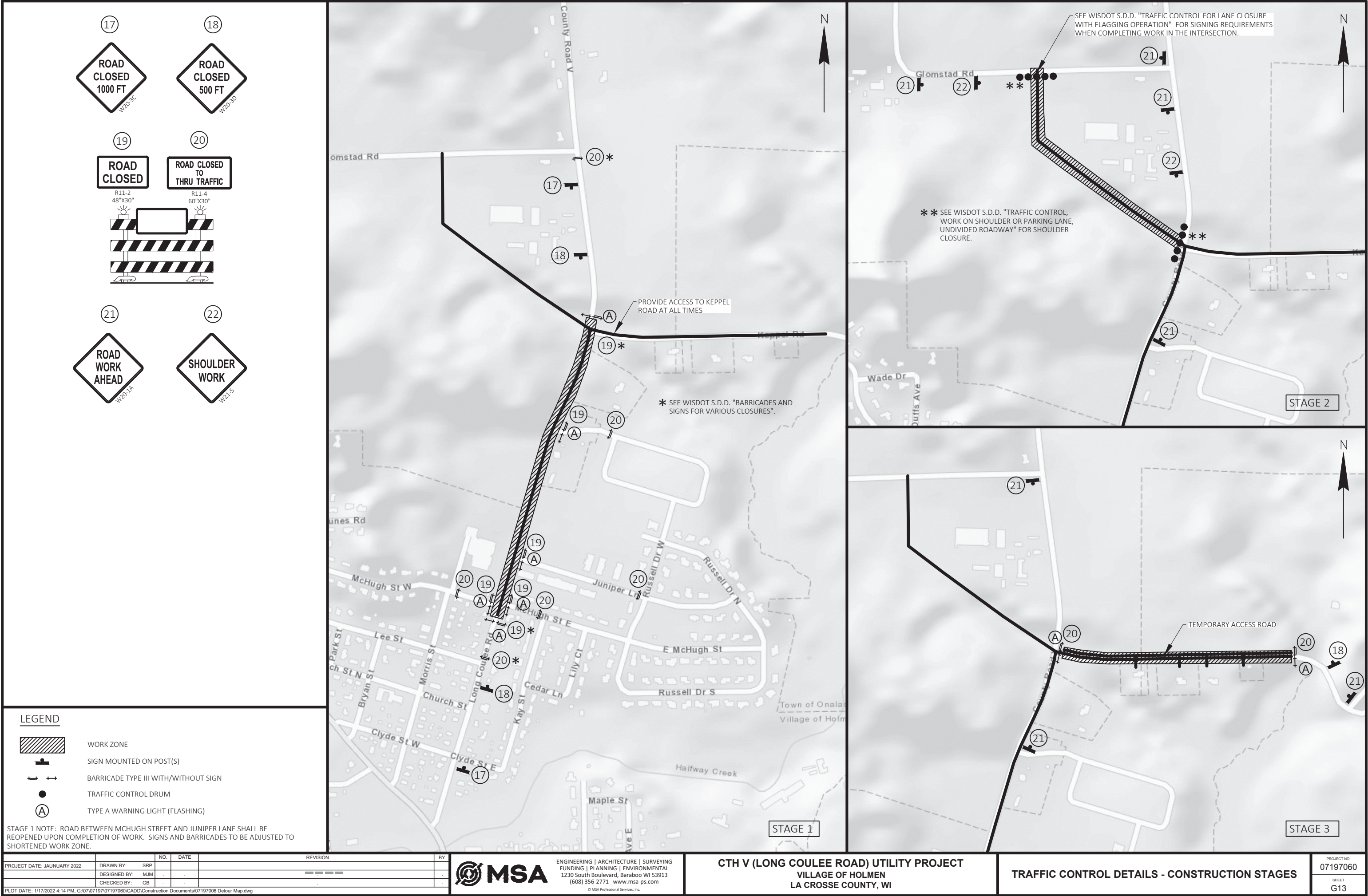
LA CROSSE COUNTY, WI

PROJECT OVERVIEW

PROJECT NO:  
07197060

SHEET  
G2





LEGEND

- WORK ZONE
- SIGN MOUNTED ON POST(S)
- BARRICADE TYPE III WITH/WITHOUT SIGN
- TRAFFIC CONTROL DRUM
- TYPE A WARNING LIGHT (FLASHING)

STAGE 1 NOTE: ROAD BETWEEN MCHUGH STREET AND JUNIPER LANE SHALL BE REOPENED UPON COMPLETION OF WORK. SIGNS AND BARRICADES TO BE ADJUSTED TO SHORTENED WORK ZONE.

PROJECT DATE: JAUNUARY 2022	DRAWN BY: SRP	NO.	DATE	REVISION	BY:
	DESIGNED BY: MJM	-	-		
	CHECKED BY: GB	-	-		
PLOT DATE: 1/17/2022 4:14 PM, G:\07\07197\07197060\CADD\Construction Documents\07197006 Detour Map.dwg					



ENGINEERING | ARCHITECTURE | SURVEYING  
FUNDING | PLANNING | ENVIRONMENTAL  
1230 South Boulevard, Baraboo WI 53913  
(608) 356-2771 www.msa-ps.com  
© MSA Professional Services, Inc.

CTH V (LONG COULEE ROAD) UTILITY PROJECT  
VILLAGE OF HOLMEN  
LA CROSSE COUNTY, WI

TRAFFIC CONTROL DETAILS - CONSTRUCTION STAGES

PROJECT NO:  
07197060  
SHEET  
G13