

PROJECT ID: 5079-00-70
WITH: N/A

COUNTY: LA CROSSE

ORDER OF SHEETS

Section No.	1	Title
Section No.	2	Typical Sections and Details
Section No.	3	Estimate of Quantities
Section No.	3	Miscellaneous Quantities
Section No.	4	Right of Way Plat
Section No.	5	Plan and Profile
Section No.	6	Standard Detail Drawings
Section No.	7	Sign Plates
Section No.	8	Structure Plans
Section No.	9	Computer Earthwork Data
Section No.	9	Cross Sections

TOTAL SHEETS =



STATE OF WISCONSIN DEPARTMENT OF TRANSPORTATION

PLAN OF PROPOSED IMPROVEMENT

CTH P - CTH H COON CREEK BRIDGE, B-32-0250 CTH G LA CROSSE COUNTY

STATE PROJECT NUMBER
5079-00-70

STATE PROJECT	FEDERAL PROJECT	
	PROJECT	CONTRACT
5079-00-70		

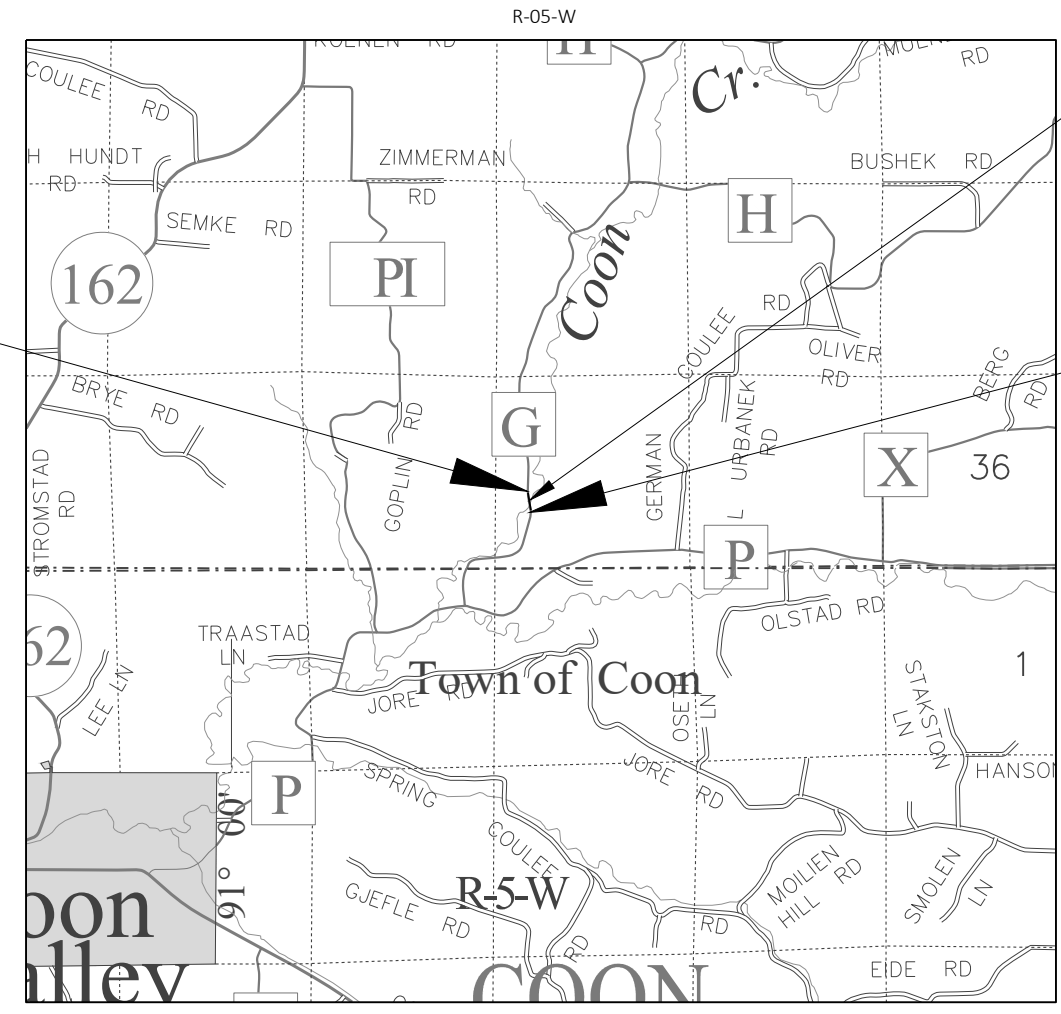
DESIGN DESIGNATION 5079-00-00

A.A.D.T.	2026	=	90
A.A.D.T.	2046	=	100
D.H.V.		=	17
D.D.		=	62/38
T.		=	16.1%
DESIGN SPEED		=	40 MPH
ESALS		=	37,000

BEGIN PROJECT
STA 108+30
Y = 101,266.50
X = 520,268.95

STRUCTURE B-32-0250
STA 113+36.37 - STA 114+59.63

END PROJECT
STA 119+00
Y = 102,325.84
X = 520,275.62



LAYOUT
SCALE 0 1 MI
TOTAL NET LENGTH OF CENTERLINE = 0.203 MI

HORIZONTAL POSITIONS SHOWN ON THIS PLAN ARE WISCONSIN COORDINATE REFERENCE SYSTEM (WISCRS), LA CROSSE COUNTY, NAD83 (2012), IN U.S. SURVEY FEET. POSITIONS SHOWN ARE GRID COORDINATES, GRID BEARINGS, AND GRID DISTANCES. GRID DISTANCES ARE THE SAME AS GROUND DISTANCES.
ELEVATIONS ARE REFERENCED TO NAVD 88 (2011). GPS DERIVED ELEVATIONS ARE BASED ON GEOID 18.

CONVENTIONAL SYMBOLS

PLAN	PROFILE
CORPORATE LIMITS	GRADE LINE
PROPERTY LINE	ORIGINAL GROUND
LOT LINE	MARSH OR ROCK PROFILE (To be noted as such)
LIMITED HIGHWAY EASEMENT	SPECIAL DITCH
EXISTING RIGHT OF WAY	GRADE ELEVATION
PROPOSED OR NEW R/W LINE	CULVERT (Profile View)
SLOPE INTERCEPT	UTILITIES
REFERENCE LINE	ELECTRIC
EXISTING CULVERT	FIBER OPTIC
PROPOSED CULVERT (Box or Pipe)	GAS
COMBUSTIBLE FLUIDS	SANITARY SEWER
MARSH AREA	STORM SEWER
WOODED OR SHRUB AREA	TELEPHONE
	WATER
	UTILITY PEDESTAL
	POWER POLE
	TELEPHONE POLE

ACCEPTED FOR
COUNTY of LA CROSSE

(Date) HIGHWAY COMMISSIONER

ORIGINAL PLANS PREPARED BY
MSA
1702 Pankratz Street, Madison WI 53704
(608)242-7779 www.msa-ps.com

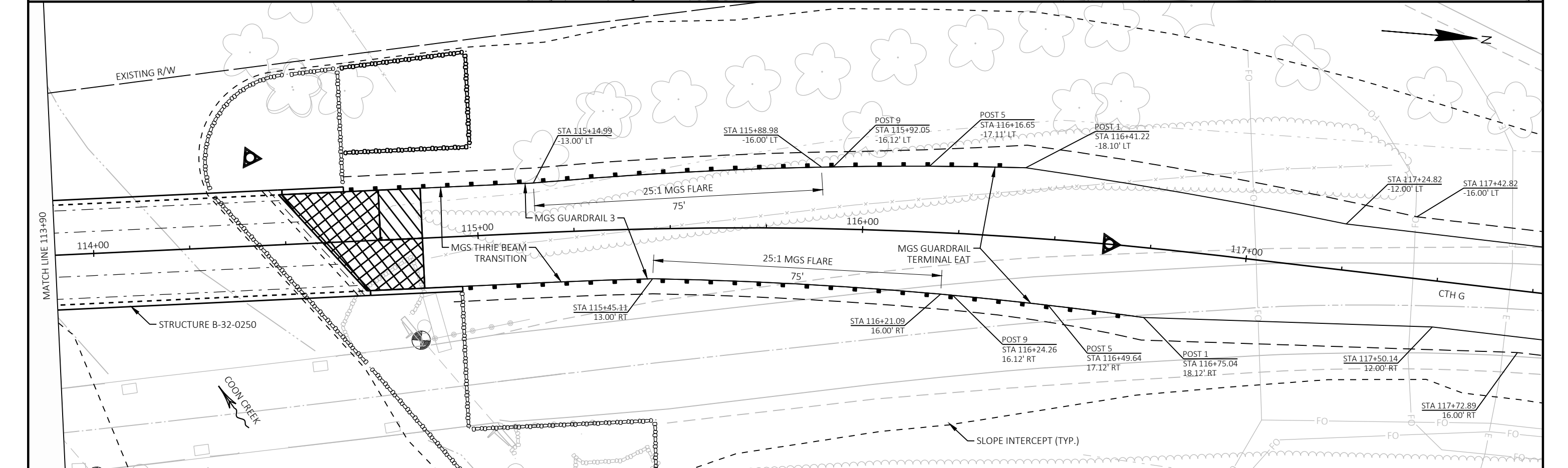
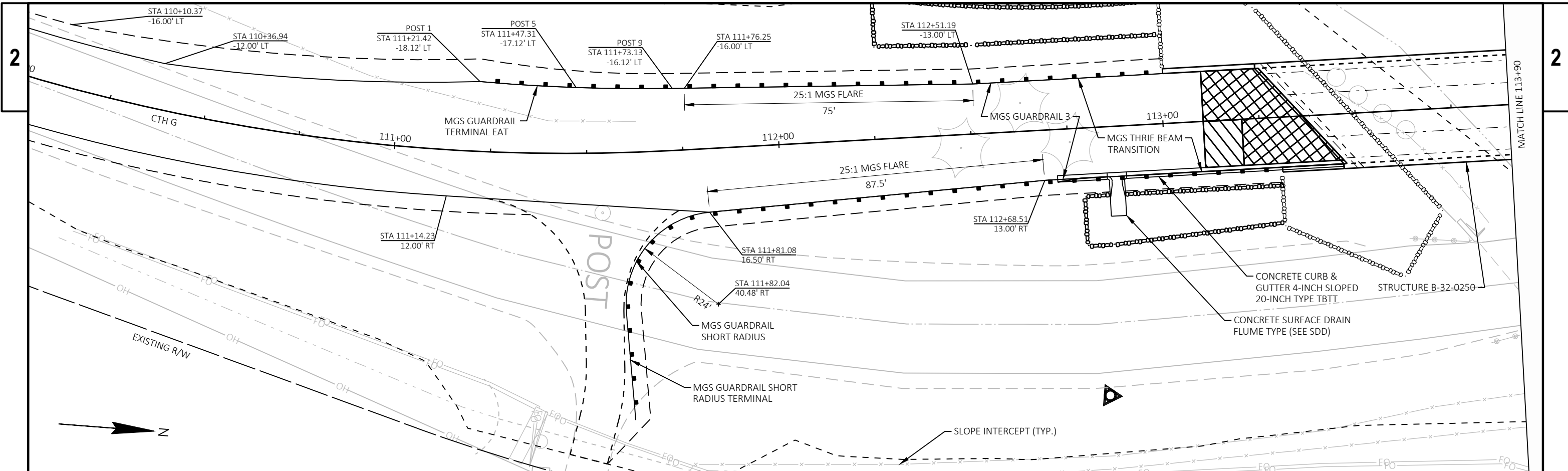
DATE: _____
(PROFESSIONAL ENGINEER)

STATE OF WISCONSIN
DEPARTMENT OF TRANSPORTATION

PREPARED BY
Surveyor MSA PROFESSIONAL SERVICES, INC.
Designer MSA PROFESSIONAL SERVICES, INC.
Project Manager JOSH SCHOENMANN
Regional Examiner REGIONAL EXAMINER
Regional Supervisor KYLE HEMP

APPROVED FOR THE DEPARTMENT
DATE: _____
(Signature)

E



PROJECT NO: 5079-00-70

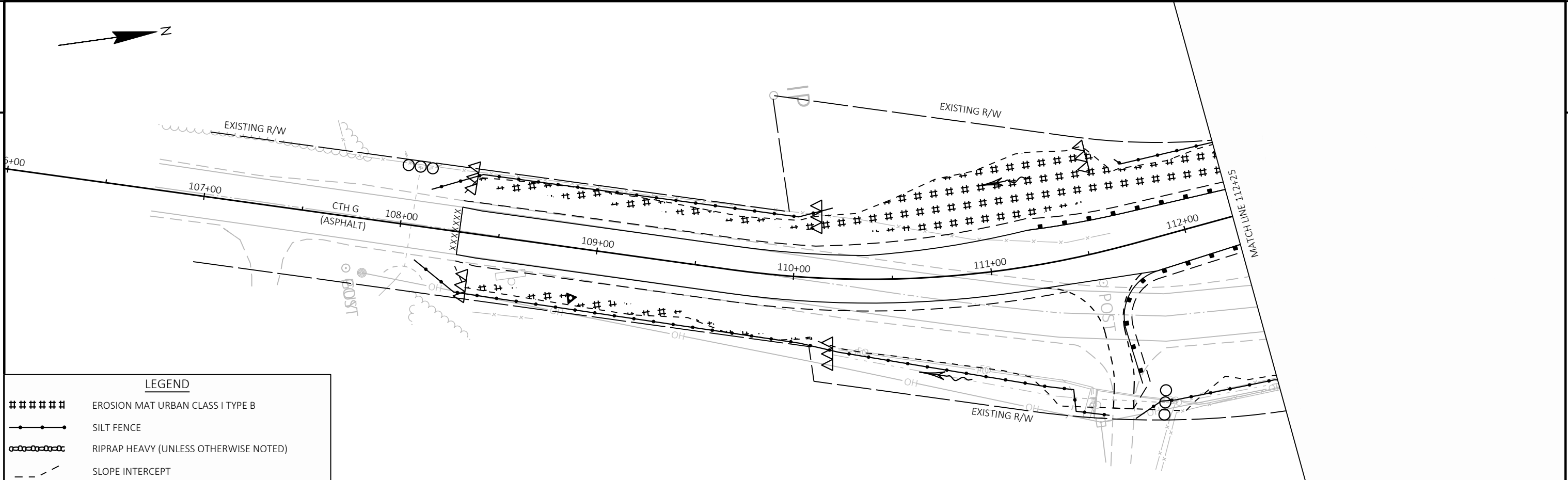
HWY: CTH G

COUNTY: LA CROSSE

GUARDRAIL DETAILS

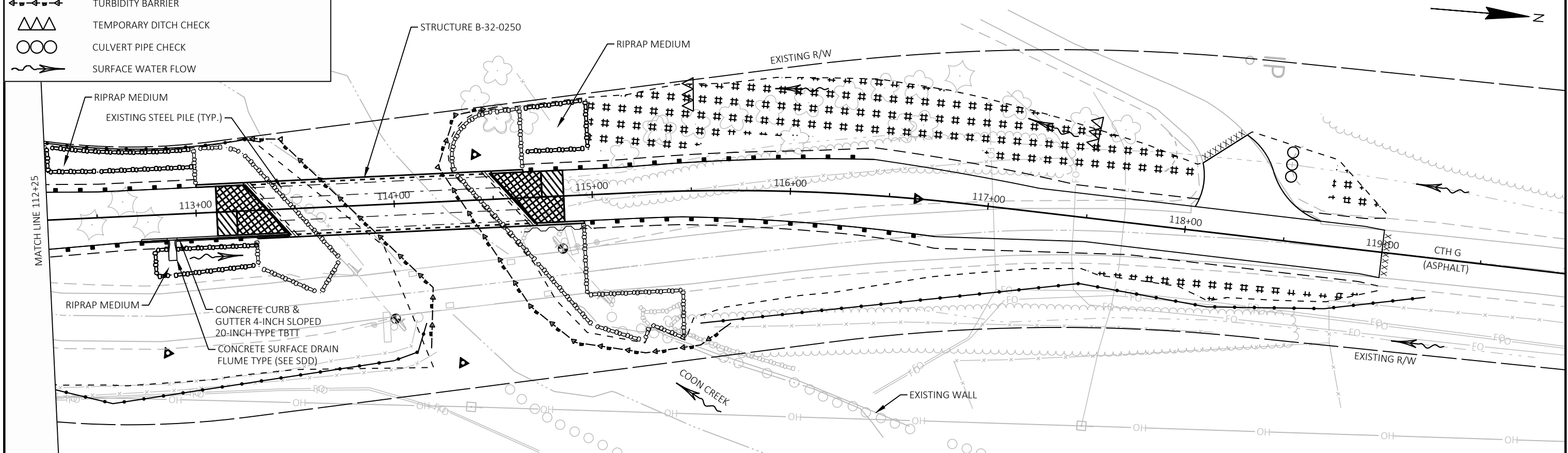
SHEET

E

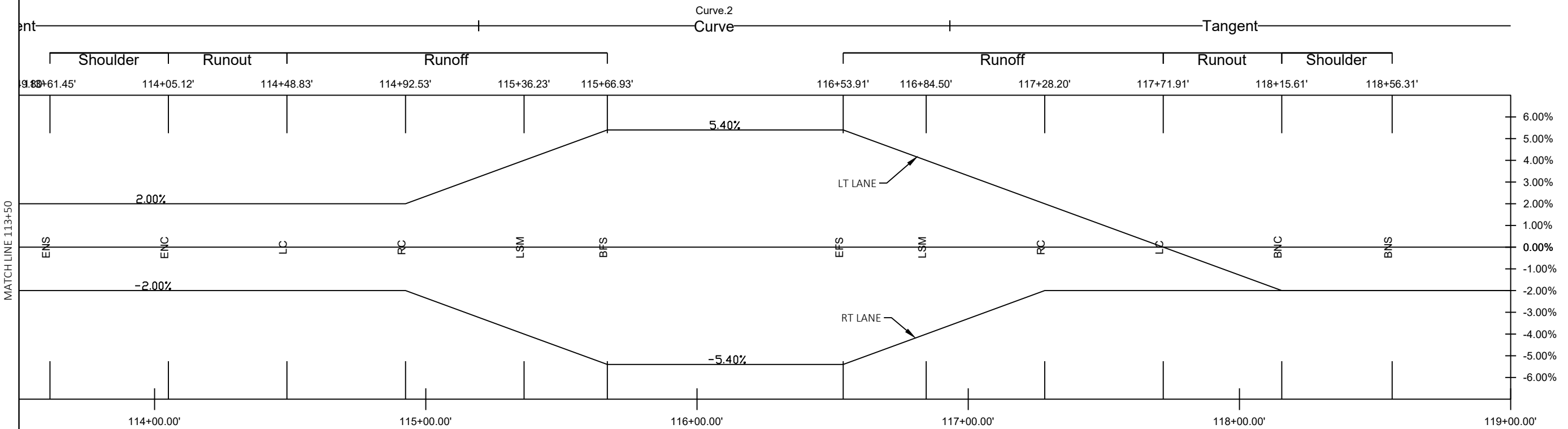
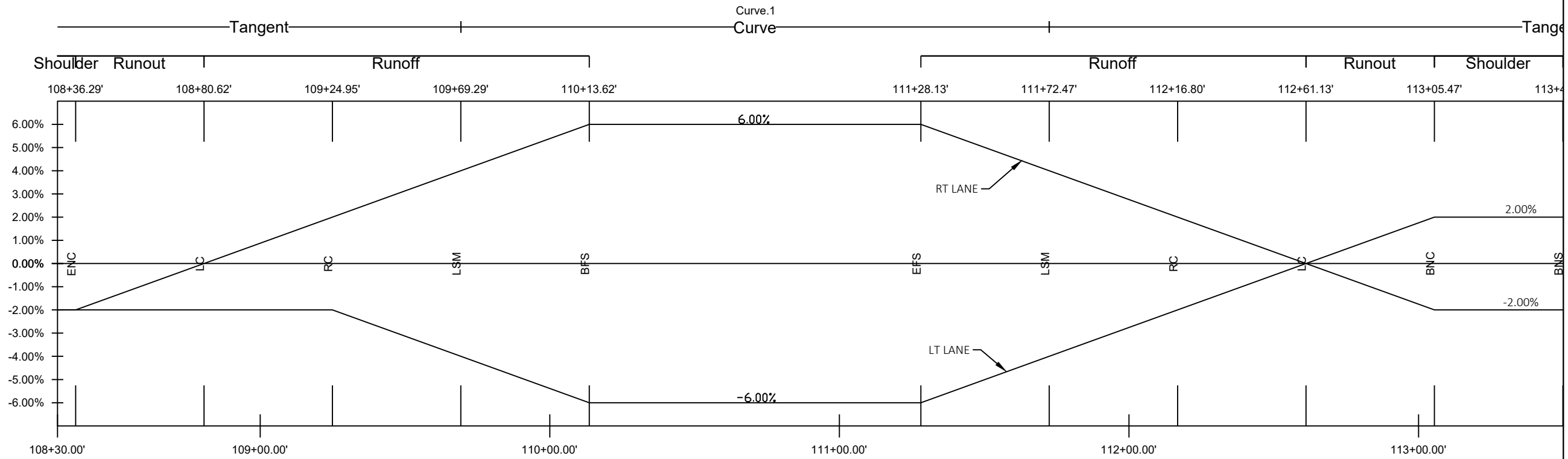


LEGEND

#####	EROSION MAT URBAN CLASS I TYPE B
—●—●—●—●—●—	SILT FENCE
—○—○—○—○—○—	RIPRAP HEAVY (UNLESS OTHERWISE NOTED)
- - - - -	SLOPE INTERCEPT
~~~~~	SHEET PILING
←-▲-▲-▲-▲-→	TURBIDITY BARRIER
▲▲▲	TEMPORARY DITCH CHECK
○○○	CULVERT PIPE CHECK
→	SURFACE WATER FLOW



PROJECT NO: 5079-00-70	HWY: CTH G	COUNTY: LA CROSSE	EROSION CONTROL	SHEET	<b>E</b>
------------------------	------------	-------------------	-----------------	-------	----------

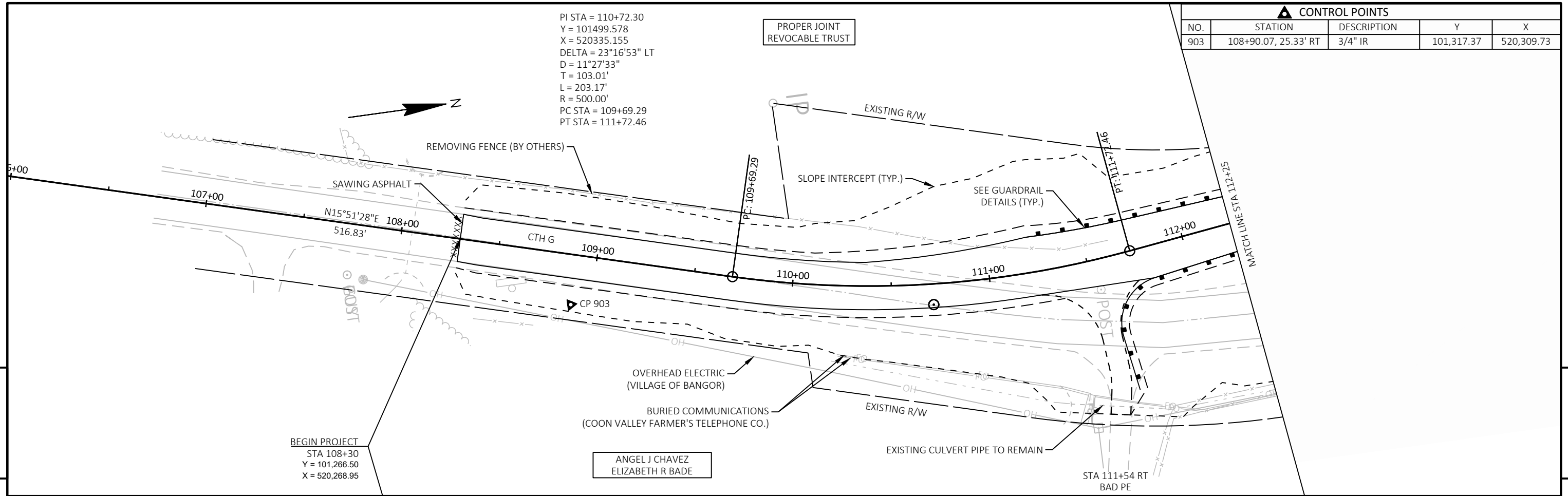


PI STA = 110+72.30  
 Y = 101499.578  
 X = 520335.155  
 DELTA = 23°16'53" LT  
 D = 11°27'33"  
 T = 103.01'  
 L = 203.17'  
 R = 500.00'  
 PC STA = 109+69.29  
 PT STA = 111+72.46

PROPER JOINT  
 REVOCABLE TRUST

CONTROL POINTS

NO.	STATION	DESCRIPTION	Y	X
903	108+90.07, 25.33' RT	3/4" IR	101,317.37	520,309.73

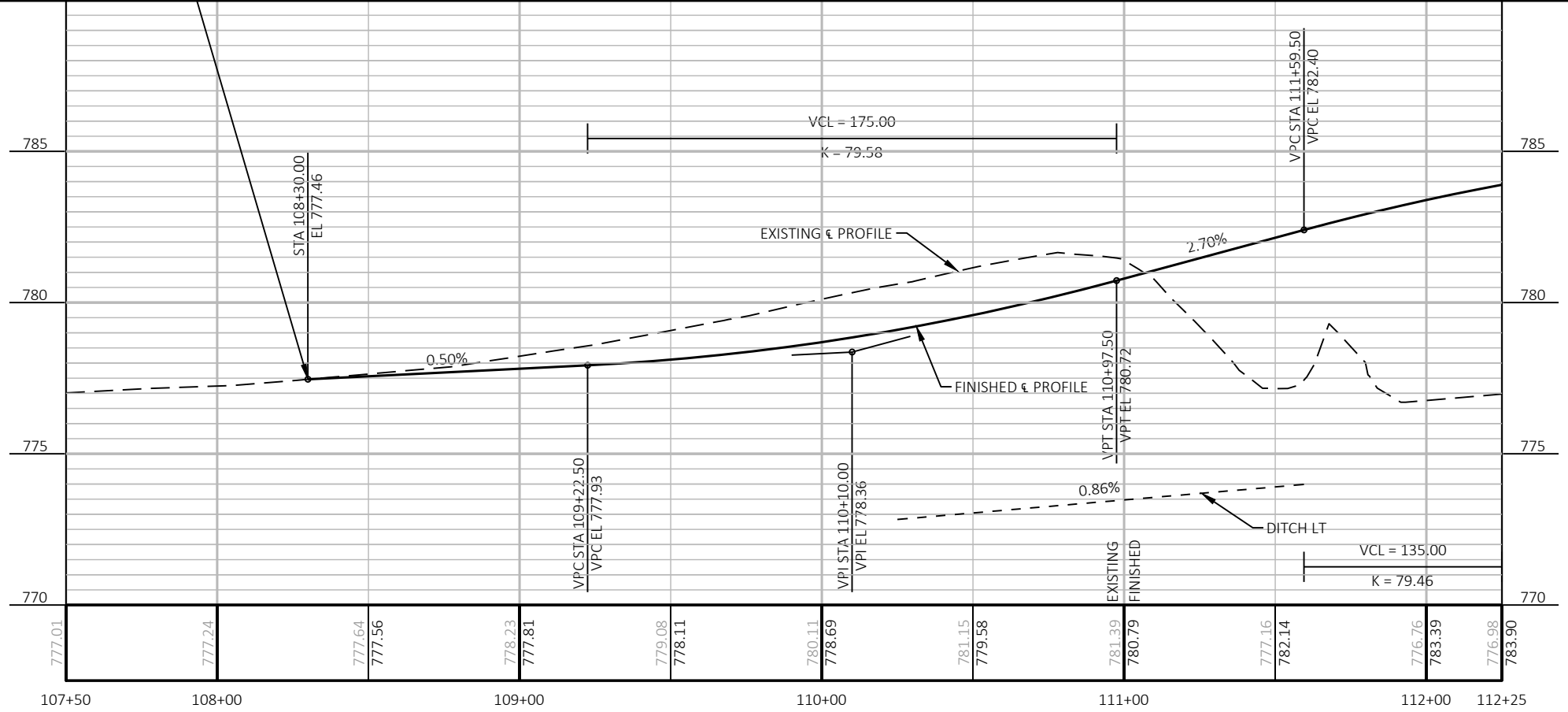


5

5

BEGIN PROJECT  
 STA 108+30  
 Y = 101,266.50  
 X = 520,268.95

ANGEL J CHAVEZ  
 ELIZABETH R BADE

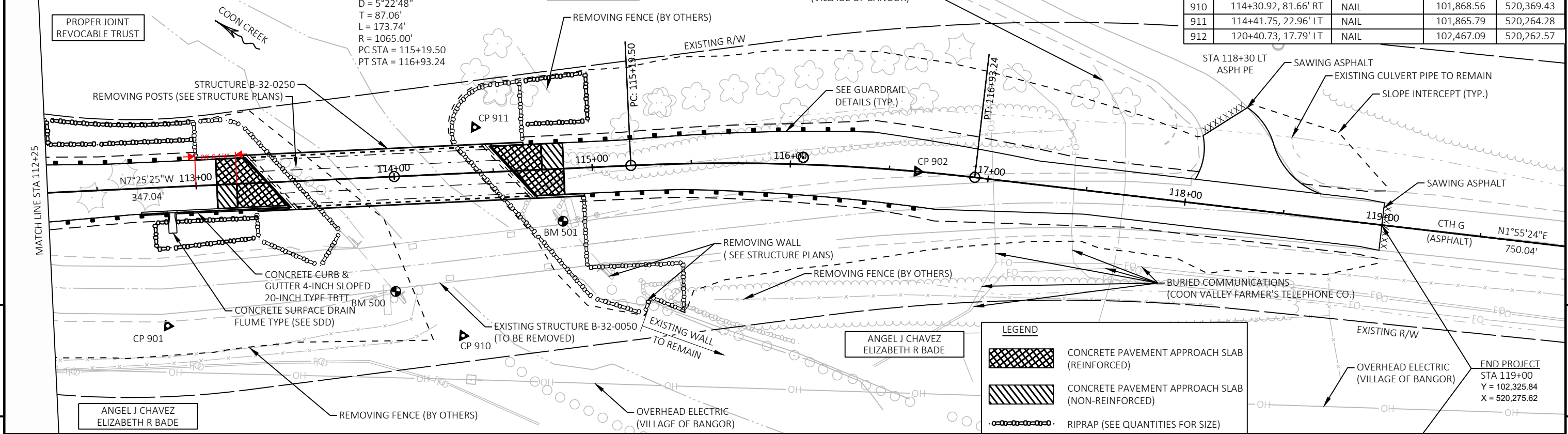


PROJECT NO: 5079-00-70      HWY: CTH G      COUNTY: LA CROSSE      PLAN AND PROFILE: CTH G      SHEET: E

BENCH MARKS			
NO.	STATION	ELEV.	DESCRIPTION
500	113+98.08	788.03	CHISLED "X" ON BRIDGE (57.9' RT)
501	114+83.96	788.06	CHISLED "X" ON BRIDGE (26.5' RT)

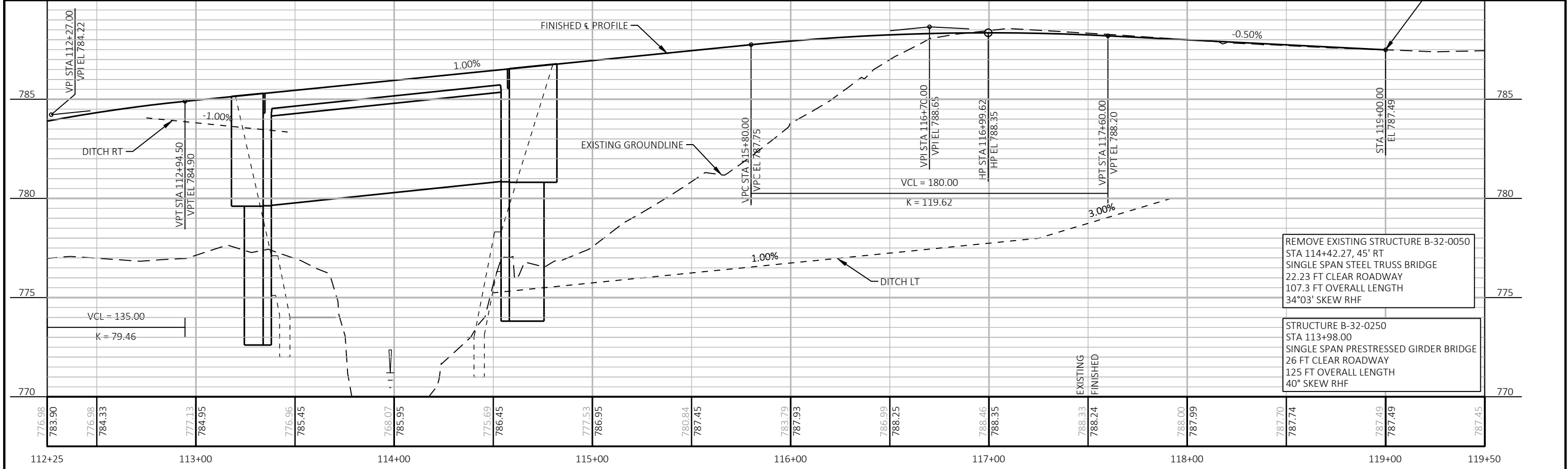
PI STA = 116+06.56  
 Y = 102032.180  
 X = 520265.758  
 DELTA = 9°20'49" RT  
 D = 5°22'48"  
 T = 87.06'  
 L = 173.74'  
 R = 1065.00'  
 PC STA = 115+19.50  
 PT STA = 116+93.24

CONTROL POINTS				
NO.	STATION	DESCRIPTION	Y	X
901	112+82.45, 69.75' RT	3/4" IR	101,719.81	520,376.80
902	116+64.20, 0.02' LT	3/4" IR	102,090.17	520,268.08
910	114+30.92, 81.66' RT	NAIL	101,868.56	520,369.43
911	114+41.75, 22.96' LT	NAIL	101,865.79	520,264.28
912	120+40.73, 17.79' LT	NAIL	102,467.09	520,262.57



**LEGEND**

- CONCRETE PAVEMENT APPROACH SLAB (REINFORCED)
- CONCRETE PAVEMENT APPROACH SLAB (NON-REINFORCED)
- RIPRAP (SEE QUANTITIES FOR SIZE)



REMOVE EXISTING STRUCTURE B-32-0050  
 STA 114+42.27, 45' RT  
 SINGLE SPAN STEEL TRUSS BRIDGE  
 22.23 FT CLEAR ROADWAY  
 107.3 FT OVERALL LENGTH  
 34°03' SKEW RHF

STRUCTURE B-32-0250  
 STA 113+98.00  
 SINGLE SPAN PRESTRESSED GIRDER BRIDGE  
 26 FT CLEAR ROADWAY  
 125 FT OVERALL LENGTH  
 40° SKEW RHF

PROJECT NO: 5079-00-70	HWY: CTH G	COUNTY: LA CROSSE	PLAN AND PROFILE: CTH G	SHEET	<b>E</b>
------------------------	------------	-------------------	-------------------------	-------	----------