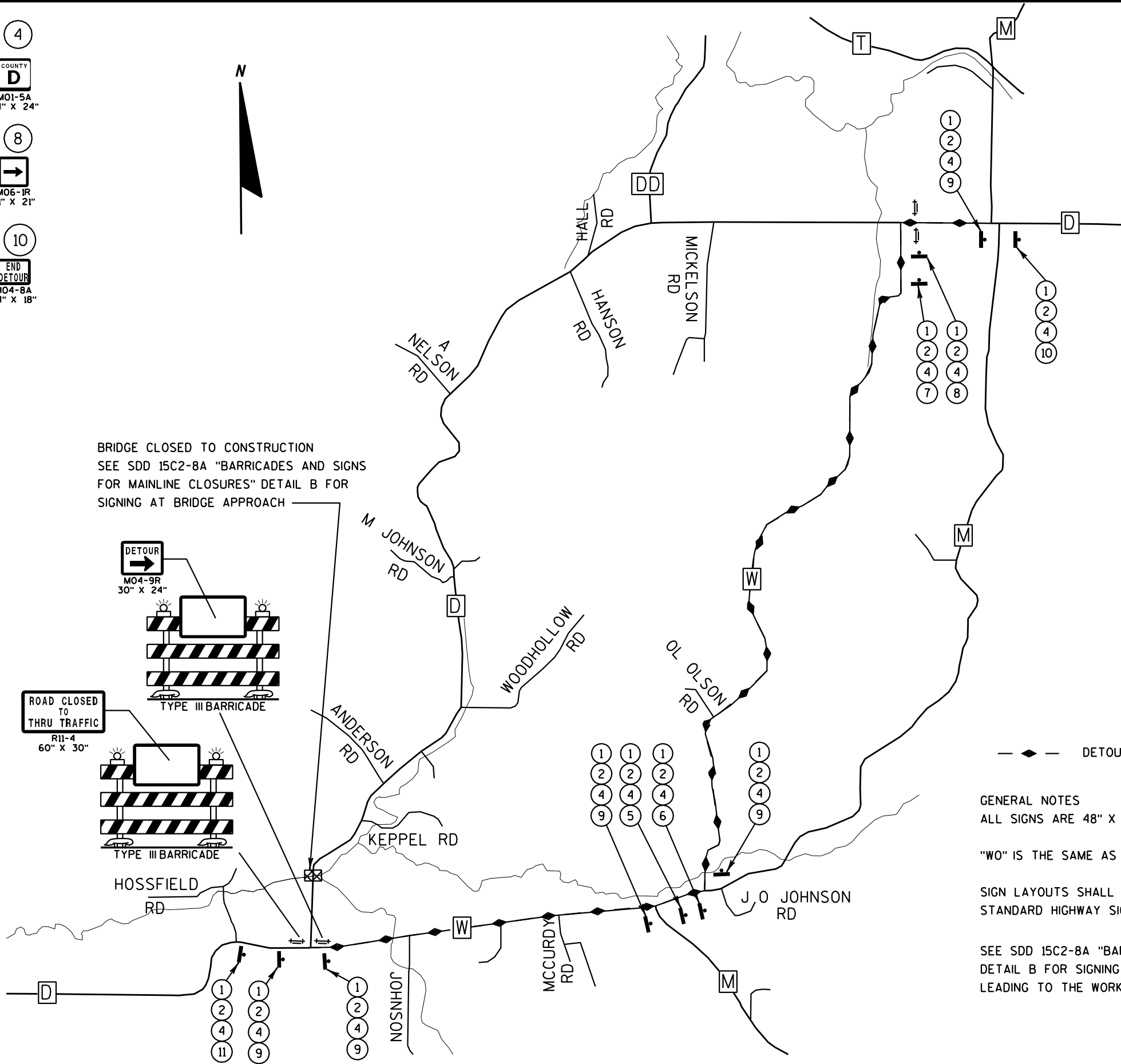
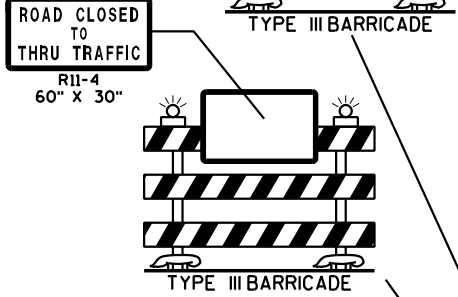
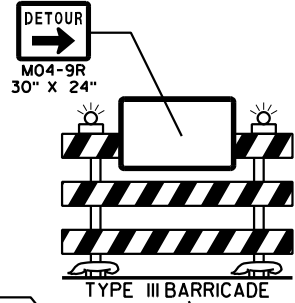


- 1 24" X 12"
- 2 24" X 12"
- 3 24" X 12"
- 4 24" X 24"
- 5 21" X 21"
- 6 21" X 21"
- 7 21" X 21"
- 8 21" X 21"
- 9 21" X 21"
- 10 24" X 18"



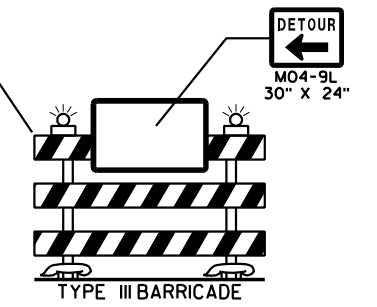
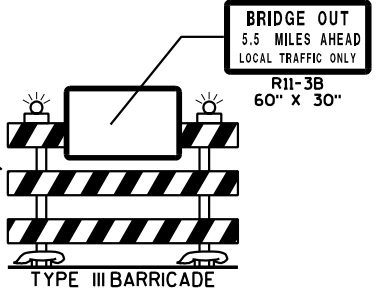
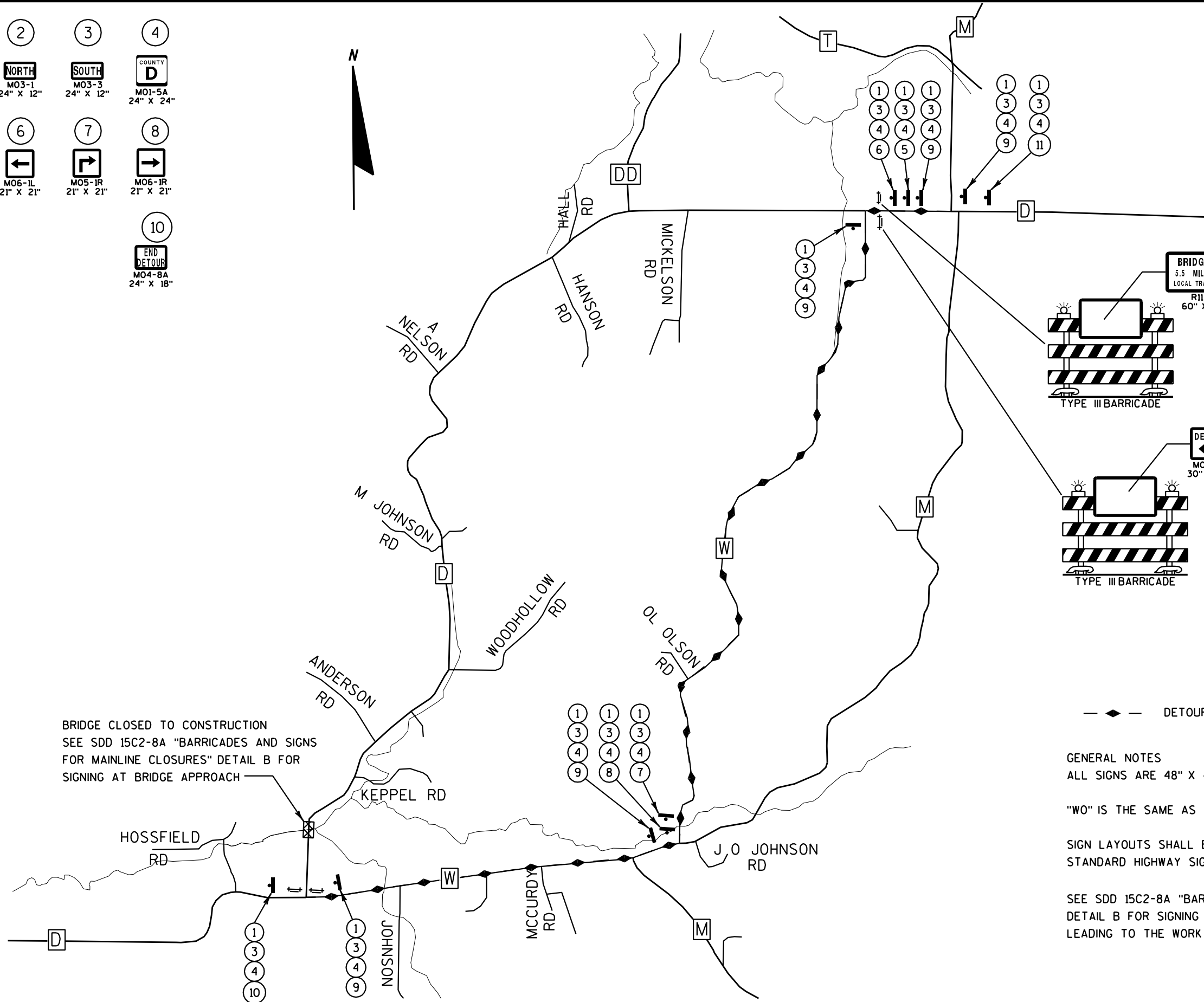
BRIDGE CLOSED TO CONSTRUCTION  
SEE SDD 15C2-8A "BARRICADES AND SIGNS FOR MAINLINE CLOSURES" DETAIL B FOR SIGNING AT BRIDGE APPROACH



— ◆ — DETOUR ROUTE

GENERAL NOTES  
ALL SIGNS ARE 48" X 48" UNLESS OTHERWISE NOTED.  
"WO" IS THE SAME AS "W" EXCEPT THE BACKGROUND IS ORANGE.  
SIGN LAYOUTS SHALL BE IN ACCORDANCE WITH FHWA'S MANUAL OF STANDARD HIGHWAY SIGNS OR THE WISCONSIN STANDARD SIGN PLATES.  
SEE SDD 15C2-8A "BARRICADES AND SIGNS FOR MAINLINE CLOSURES" DETAIL B FOR SIGNING AT BRIDGE APPROACH AND ADVANCED AREAS LEADING TO THE WORK ZONE.

- 1 DETOUR MO4-8 24" X 12"
- 2 NORTH MO3-1 24" X 12"
- 3 SOUTH MO3-3 24" X 12"
- 4 COUNTY D MO1-5A 24" X 24"
- 5 MO5-1L 21" X 21"
- 6 MO6-1L 21" X 21"
- 7 MO5-1R 21" X 21"
- 8 MO6-1R 21" X 21"
- 9 MO6-1 21" X 21"
- 10 END DETOUR MO4-8A 24" X 18"



— ◆ — DETOUR ROUTE

GENERAL NOTES

ALL SIGNS ARE 48" X 48" UNLESS OTHERWISE NOTED.

"WO" IS THE SAME AS "W" EXCEPT THE BACKGROUND IS ORANGE.

SIGN LAYOUTS SHALL BE IN ACCORDANCE WITH FHWA'S MANUAL OF STANDARD HIGHWAY SIGNS OR THE WISCONSIN STANDARD SIGN PLATES.

SEE SDD 15C2-8A "BARRICADES AND SIGNS FOR MAINLINE CLOSURES" DETAIL B FOR SIGNING AT BRIDGE APPROACH AND ADVANCED AREAS LEADING TO THE WORK ZONE.

BRIDGE CLOSED TO CONSTRUCTION  
SEE SDD 15C2-8A "BARRICADES AND SIGNS  
FOR MAINLINE CLOSURES" DETAIL B FOR  
SIGNING AT BRIDGE APPROACH