

PROJECT ID: 7049-00-70
WITH: N/A

COUNTY: LA CROSSE

ORDER OF SHEETS

- Section No. 1 Title
- Section No. 2 Typical Sections and Details (Includes Erosion Control Plans)
- Section No. 3 Estimate of Quantities
- Section No. 3 Miscellaneous Quantities
- Section No. 4 Right of Way Plat
- Section No. 5 Plan and Profile
- Section No. 6 Standard Detail Drawings
- Section No. 7 Sign Plates
- Section No. 8 Structure Plans
- Section No. 9 Computer Earthwork Data
- Section No. 9 Cross Sections

TOTAL SHEETS =

STATE OF WISCONSIN
DEPARTMENT OF TRANSPORTATION

PLAN OF PROPOSED IMPROVEMENT

T OF ONALASKA - T OF FARMINGTON

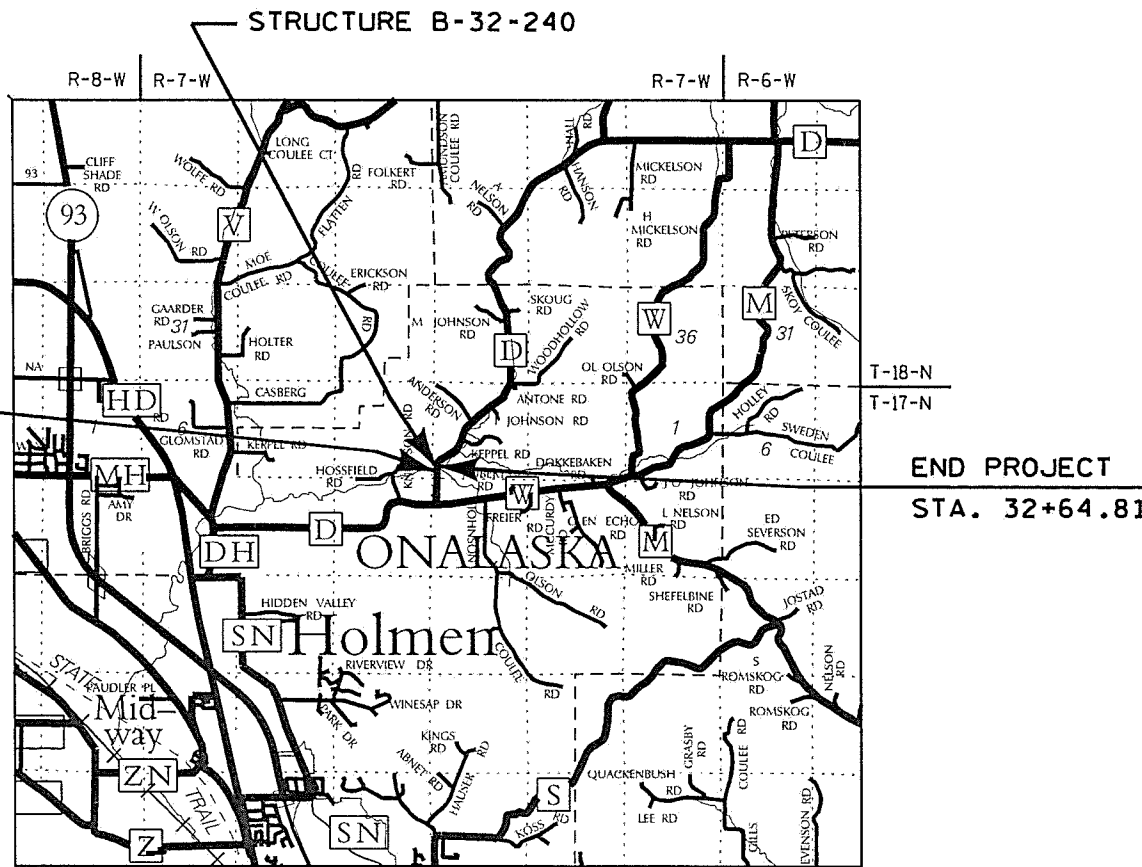
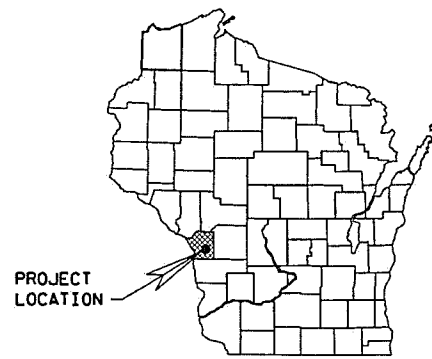
HALFWAY CREEK BRIDGE B-32-0240

CTH D

LA CROSSE COUNTY

STATE PROJECT NUMBER
7049-00-70

STATE PROJECT	FEDERAL PROJECT	
	PROJECT	CONTRACT
7049-00-70		



DESIGN DESIGNATION

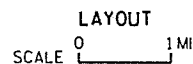
- A.A.D.T. (2022) = 1,170
- A.A.D.T. (2042) = 1,580
- D.H.V. = 120
- D. = 50/50
- T. = 5%
- DESIGN SPEED = 35 MPH
- ESALS = 130,000

BEGIN PROJECT
STA. 27+11.40
Y = 189654.97
X = 455917.66

END PROJECT
STA. 32+64.81

CONVENTIONAL SYMBOLS

PLAN	PROFILE
CORPORATE LIMITS	GRADE LINE
PROPERTY LINE	ORIGINAL GROUND
LOT LINE	MARSH OR ROCK PROFILE (To be noted as such)
LIMITED HIGHWAY EASEMENT	SPECIAL DITCH
EXISTING RIGHT OF WAY	GRADE ELEVATION
PROPOSED OR NEW R/W LINE	CULVERT (Profile View)
SLOPE INTERCEPT	UTILITIES
REFERENCE LINE	OVERHEAD
EXISTING CULVERT	ELECTRIC
PROPOSED CULVERT (Box or Pipe)	FIBER OPTIC
COMBUSTIBLE FLUIDS	GAS
	SANITARY SEWER
HIGH VOLTAGE	STORM SEWER
	TELEPHONE
MARSH AREA	WATER
	UTILITY PEDESTAL
WOODED OR SHRUB AREA	POWER POLE
	TELEPHONE POLE



TOTAL NET LENGTH OF CENTERLINE = 0.105 MI.

HORIZONTAL POSITIONS SHOWN ON THIS PLAN ARE WISCONSIN COUNTY COORDINATES, LA CROSSE COUNTY, NAD83 (2011), IN U.S. SURVEY FEET. VALUES ARE GRID COORDINATES, GRID BEARINGS, AND GRID DISTANCES. GRID DISTANCES MAY BE USED AS GROUND DISTANCES. ELEVATIONS SHOWN ON THIS PLAN ARE REFERENCED TO THE NORTH AMERICAN VERTICAL DATUM OF 1988, NAVD88 (2012).

ACCEPTED FOR

County of La Crosse

Date 10-6-21

ORIGINAL PLANS PREPARED BY

AYRES 3433 Oakwood Hills Parkway
Eau Claire, WI 54701
www.AyresAssociates.com

DATE

STATE OF WISCONSIN
DEPARTMENT OF TRANSPORTATION

PREPARED BY

Surveyor AYRES ASSOCIATES INC

Designer AYRES ASSOCIATES INC

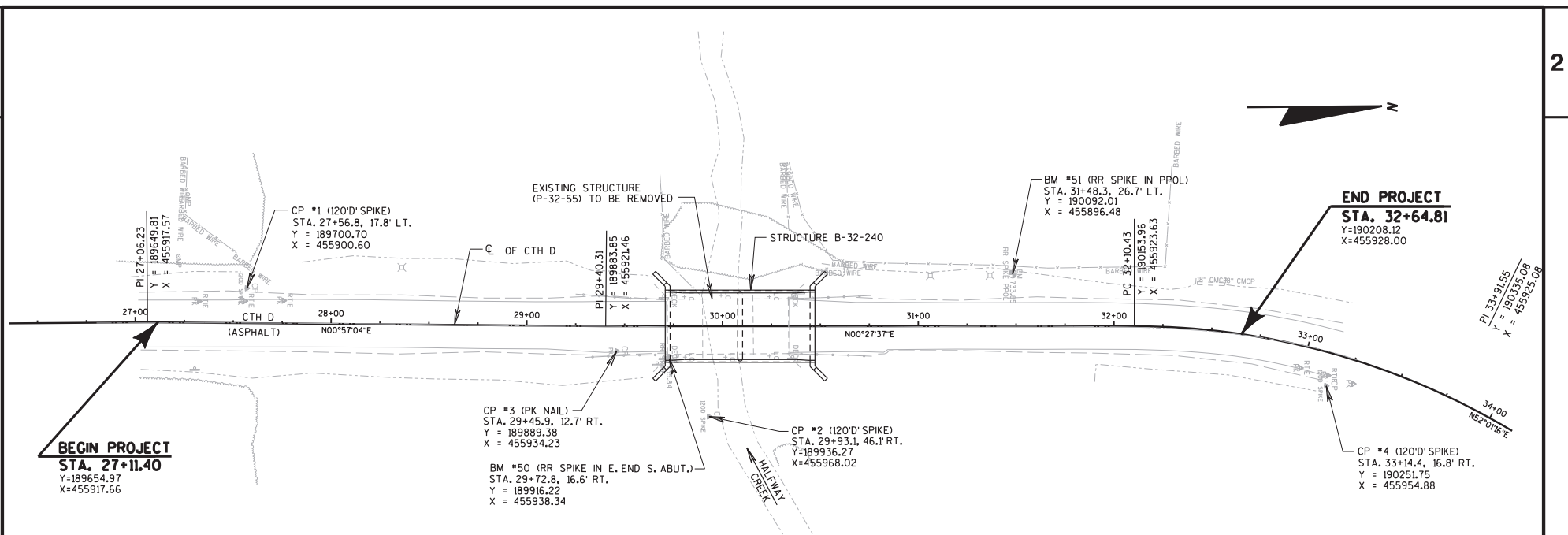
PROGRAM MANAGER ALEIGHA BURG, PE

Regional Examiner SOUTHWEST REGION

Regional Supervisor JOHN STOLZMAN, PE

APPROVED FOR THE DEPARTMENT

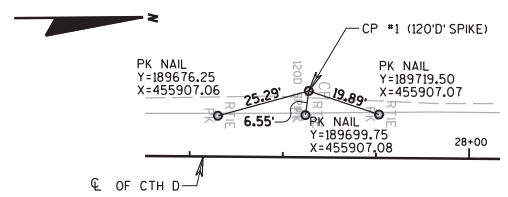
DATE: (Signature)



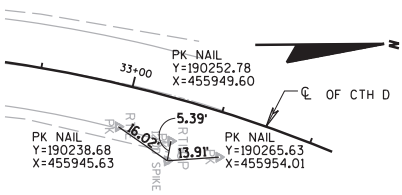
ALIGNMENT CONTROLS

CURVE DATA

P.I. STA. 33+91.55
Y=190335.08
X=455925.08
Δ=51°33'40" RT
D=15°16'44"
T=181.12'
L=337.47'
E=41.45'
R=375.00'
P.C. STA. 32+10.43
Y=190153.96
X=455923.63
P.T. STA. 35+47.89
Y=190446.54
X=456067.85

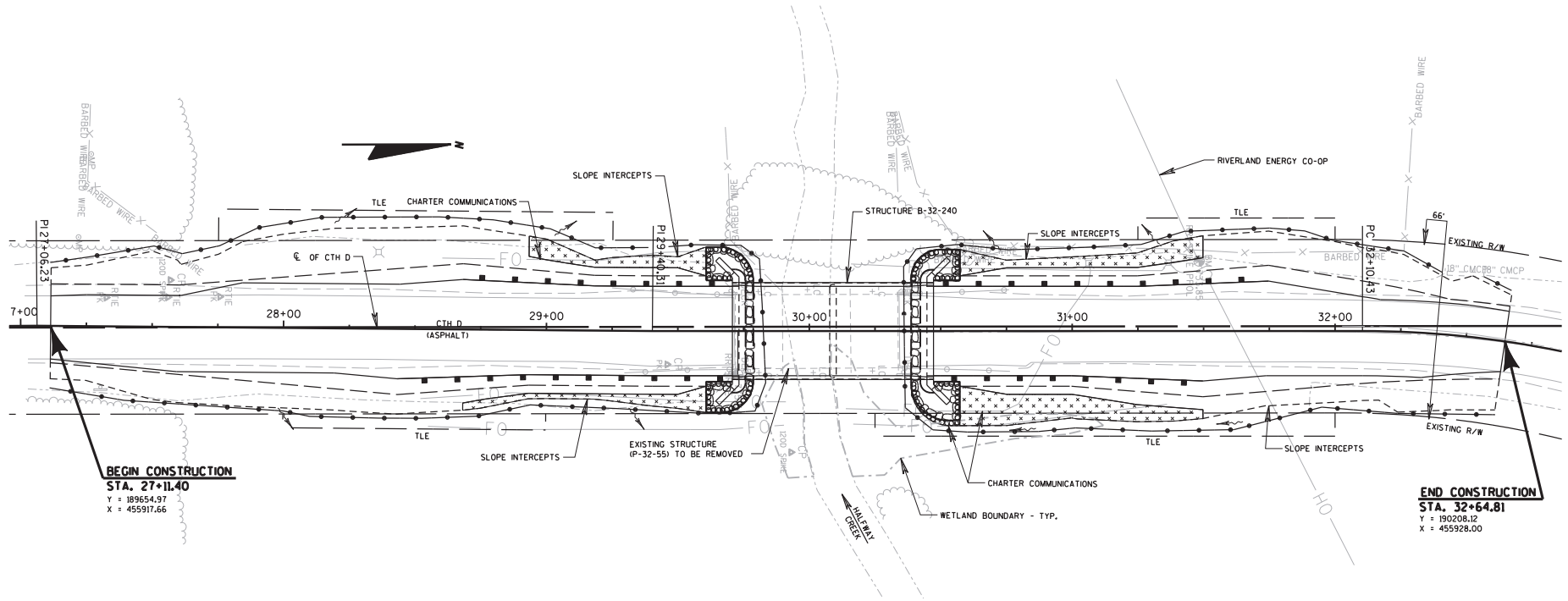


CP #1 (120'D SPIKE)
 STA. 27+56.8, 17.8' LT.
 Y = 189700.70
 X = 455900.60



CP #4 (120'D SPIKE)
 STA. 33+14.4, 16.8' RT.
 Y = 190251.75
 X = 455954.88

CONTROL POINT TIES



BEGIN CONSTRUCTION
STA. 27+11.40
 Y = 189654.97
 X = 455917.66

END CONSTRUCTION
STA. 32+64.81
 Y = 190208.12
 X = 455928.00

	HYDROLOGIC SOIL GROUP											
	A			B			C			D		
	SLOPE RANGE (PERCENT)			SLOPE RANGE (PERCENT)			SLOPE RANGE (PERCENT)			SLOPE RANGE (PERCENT)		
LAND USE:	0-2	2-6	6 & OVER	0-2	2-6	6 & OVER	0-2	2-6	6 & OVER	0-2	2-6	6 & OVER
ROW CROPS	.08	.16	.22	.12	.20	.27	.15	.24	.33	.19	.28	.38
	.22	.30	.38	.26	.34	.44	.30	.37	.50	.34	.41	.56
MEDIAN STRIP-TURF	.19	.20	.24	.19	.22	.26	.20	.23	.30	.20	.25	.30
	.24	.26	.30	.25	.28	.33	.26	.30	.37	.27	.32	.40
SIDE SLOPE-TURF		.25			.27			.28			.30	
		.32			.34			.36			.38	
PAVEMENT:												
ASPHALT	.70 - .95											
CONCRETE	.80 - .95											
BRICK	.70 - .80											
DRIVES, WALKS	.75 - .85											
ROOFS	.75 - .95											
GRAVEL ROADS, SHOULDERS	.40 - .60											

TOTAL PROJECT AREA = 0.93 ACRES
 TOTAL AREA EXPECTED TO BE DISTURBED BY CONSTRUCTION ACTIVITIES = 0.50 ACRES

NOTE:
 NO DISTURBANCE OR TOPSOIL STOCKPIILING IS ALLOWED OUTSIDE OF THE SLOPE INTERCEPTS. WETLANDS EXIST IN THE PROJECT AREA.
 MULCH TO BE PLACED ON SIDE SLOPES NOT PROTECTED BY EROSION MAT.

- LEGEND**
- EROSION MAT CLASS II TYPE C
 - SILT FENCE
 - RIPRAP HEAVY
 - DRAINAGE ARROW

HIGH WATER₂ EL. 731.31

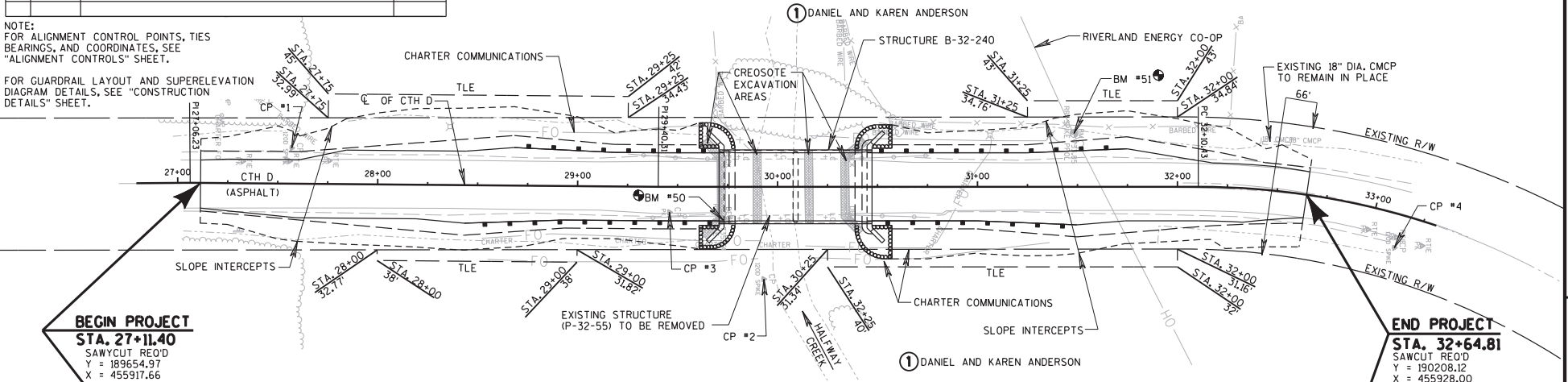
BENCH MARKS			
NO.	STA.	DESCRIPTION	ELEV.
50	29+72.8	RR SPK IN E END OF S ABUT., 16.6' RT.	735.84
51	31+48.3	RR SPIKE IN POWER POLE, 26.7' LT.	733.85

NOTE:
FOR ALIGNMENT CONTROL POINTS, TIES
BEARINGS, AND COORDINATES, SEE
"ALIGNMENT CONTROLS" SHEET.

FOR GUARDRAIL LAYOUT AND SUPERELEVATION
DIAGRAM DETAILS, SEE "CONSTRUCTION
DETAILS" SHEET.

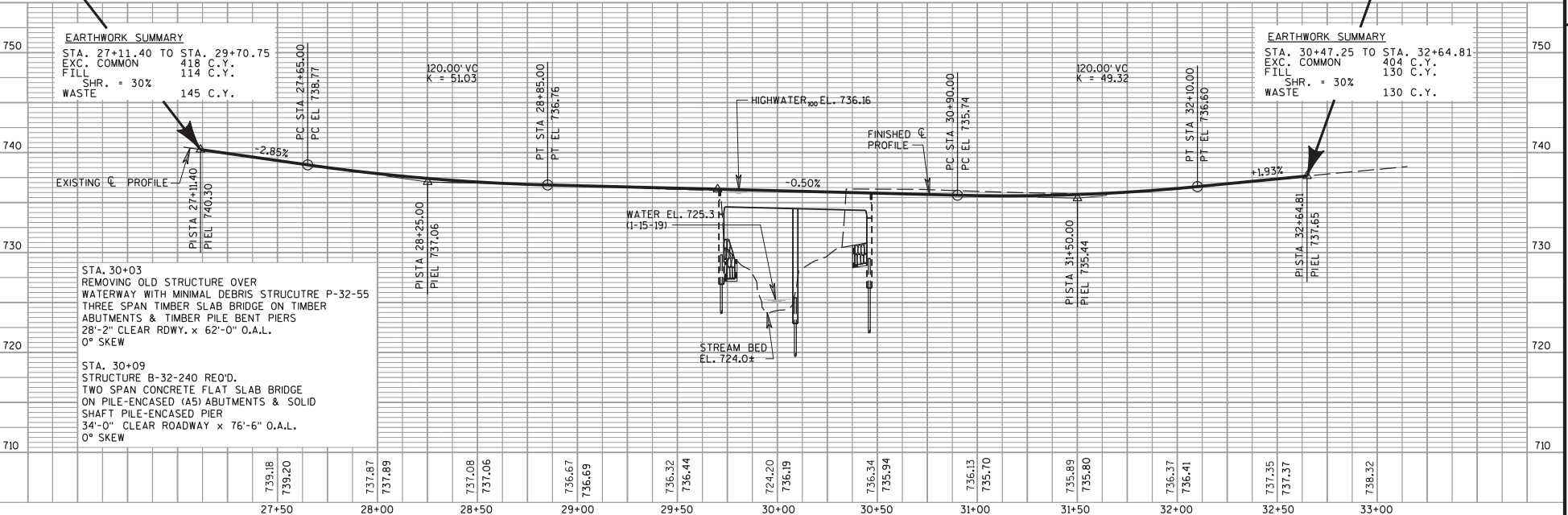
SCHEDULE OF LANDS AND INTERESTS REQUIRED

PARCEL NUMBER	OWNER(S)	INTERESTS REQUIRED	T.L.E. ACRES
1	DANIEL AND KAREN ANDERSON	TLE	0.101



BEGIN PROJECT
STA. 27+11.40
SAWCUT REOD
Y = 189654.97
X = 455917.66

END PROJECT
STA. 32+64.81
SAWCUT REOD
Y = 190208.12
X = 455928.00



PROJECT NO: 7049-00-70 HWY: CTH D COUNTY: LA CROSSE PLAN AND PROFILE SCALE, FEET 0 25 50 SHEET E