

PROJECT NO: 5163-07-72	HWY: STH 35	COUNTY: LA CROSSE/VERNON	PROJECT OVERVIEW	SHEET 4	E
------------------------	-------------	--------------------------	------------------	---------	----------

FILE NAME : O:\PDS\3D\51630702\SHEETS\PLAN\020201_PO.DWG PLOT DATE : 4/29/2025 3:12 PM PLOT BY : CORY IHDE PLOT NAME : PLOT SCALE : 1 IN:100 FT WISDOT/CADD SHEET 44

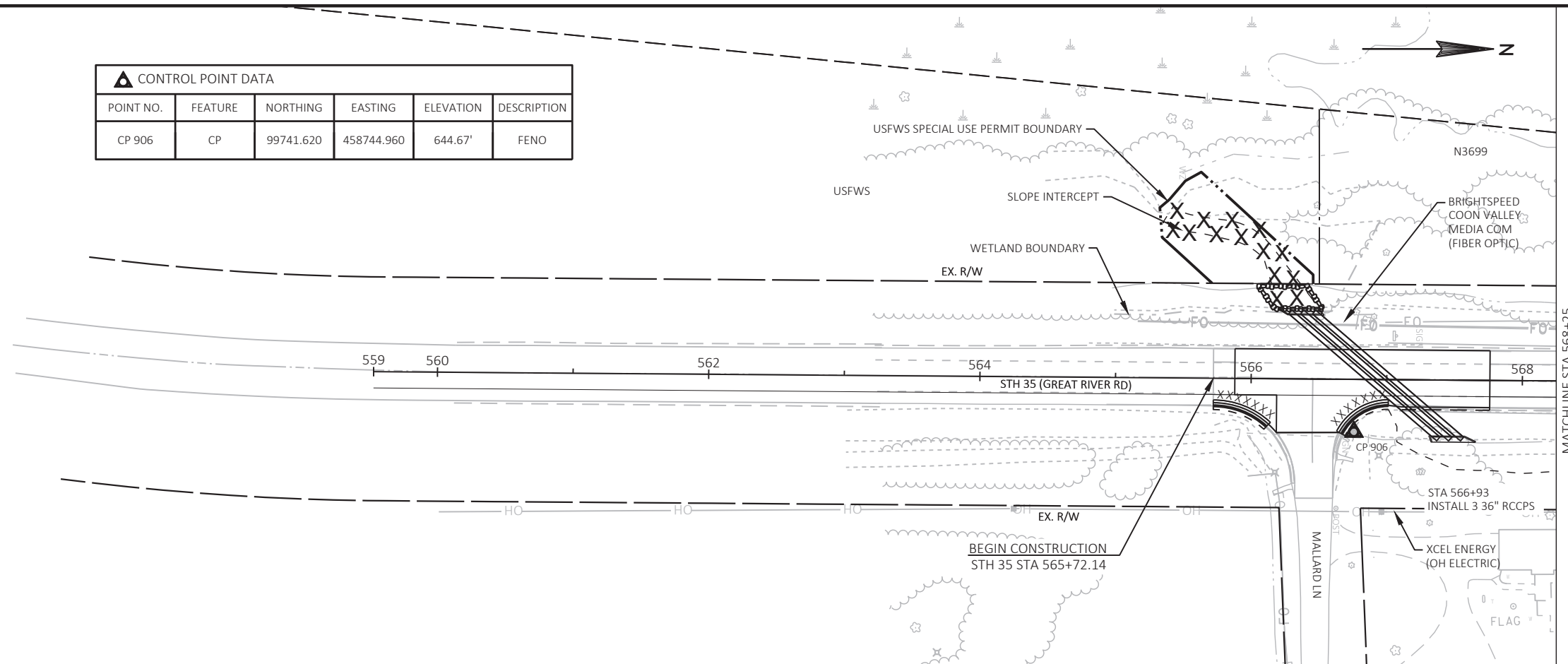
LEGEND:

- X CLEARING & GRUBBING
- .XX SAWCUTS
- TRENCH RELIEF
- XX REMOVE ACCESS

CONTROL POINT DATA

POINT NO.	FEATURE	NORTHING	EASTING	ELEVATION	DESCRIPTION
CP 906	CP	99741.620	458744.960	644.67'	FENO

BM D 124

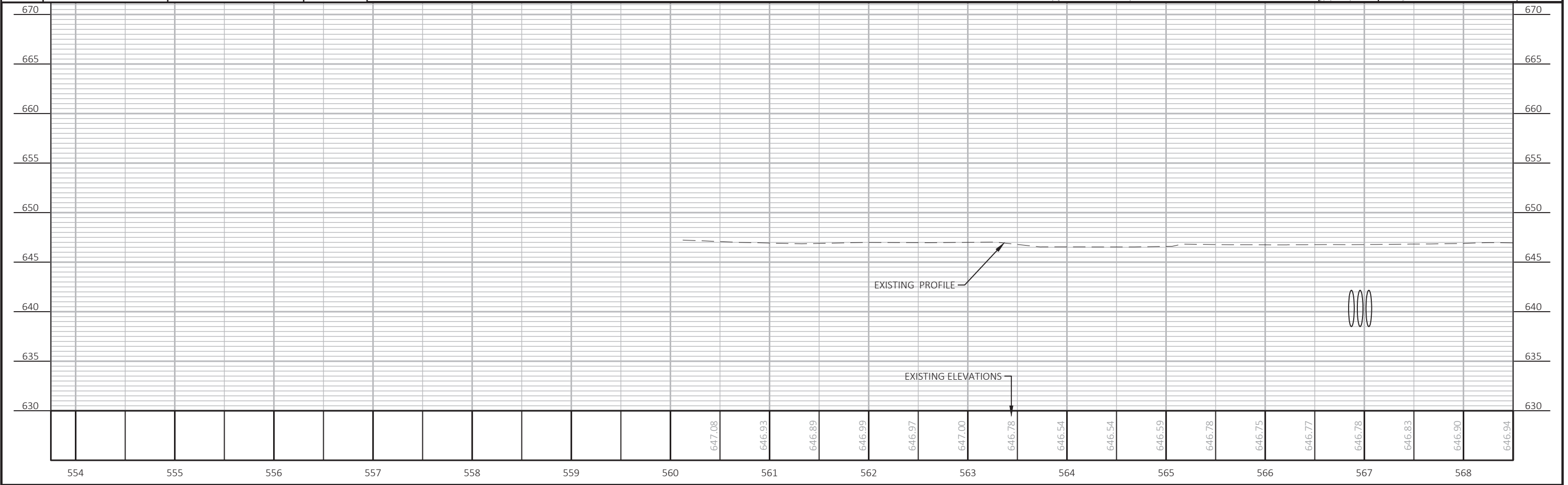


5

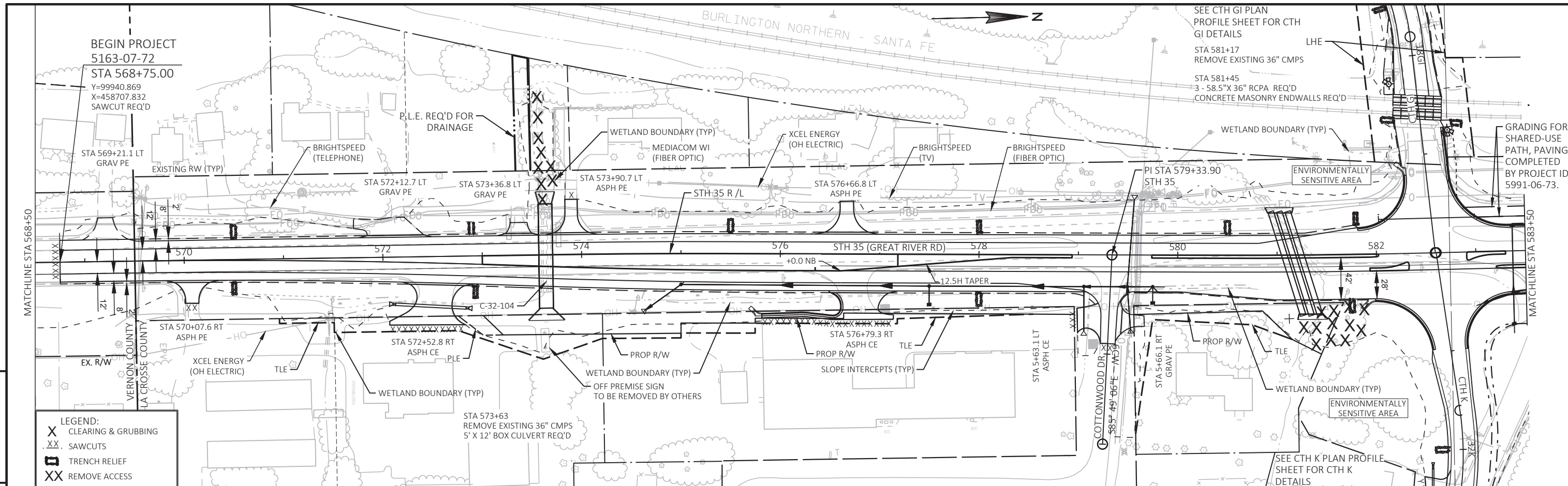
BENCHMARK TABLE

NO.	COORDINATES	DESCRIPTION	ELEVATION
BM D 124	Y=98655.995 X=458587.123	N/A	640.39'

5

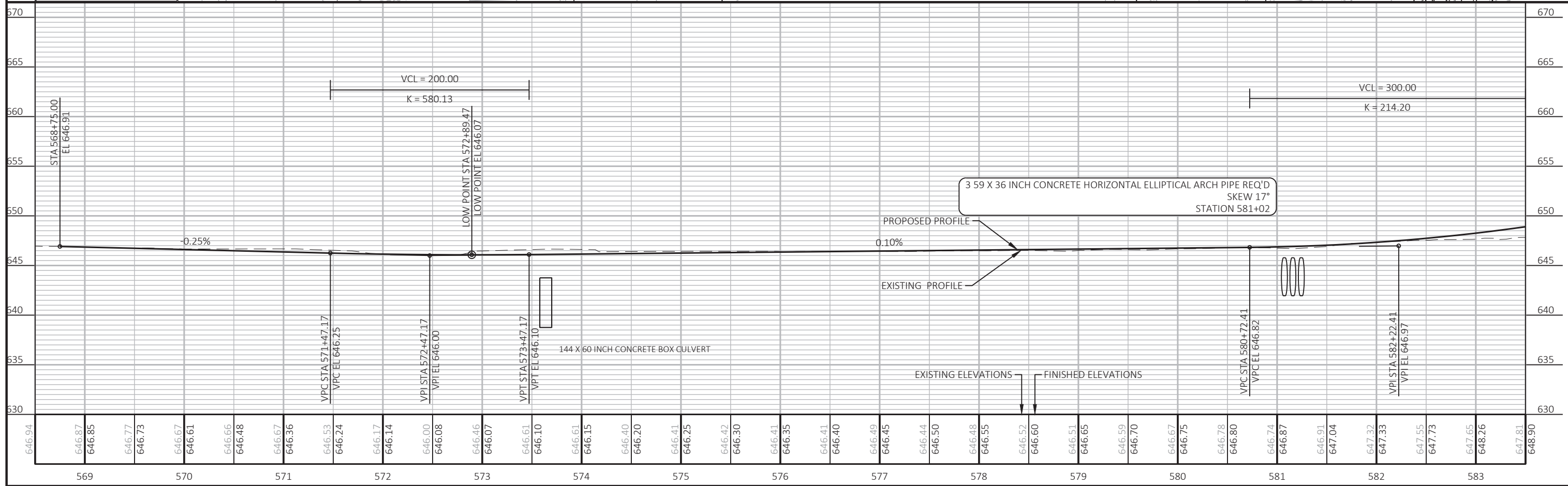


PROJECT NO: 5163-07-72 HWY: STH 35 COUNTY: LA CROSSE/VERNON PLAN PROFILE SHEET 160 E



5

LEGEND:
 X CLEARING & GRUBBING
 XX SAWCUTS
 TRENCH RELIEF
 XX REMOVE ACCESS



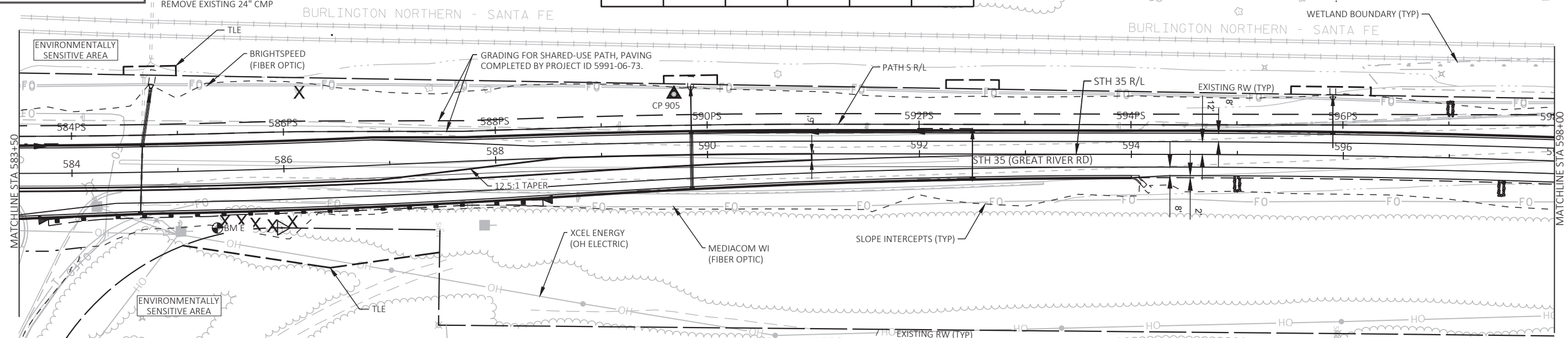
PROJECT NO: 5163-07-72	HWY: STH 35	COUNTY: LA CROSSE/VERNON	PLAN PROFILE	SHEET 161 E
------------------------	-------------	--------------------------	--------------	-------------

LEGEND:

- X CLEARING & GRUBBING
- XX SAWCUTS
- TRENCH RELIEF
- XX REMOVE ACCESS

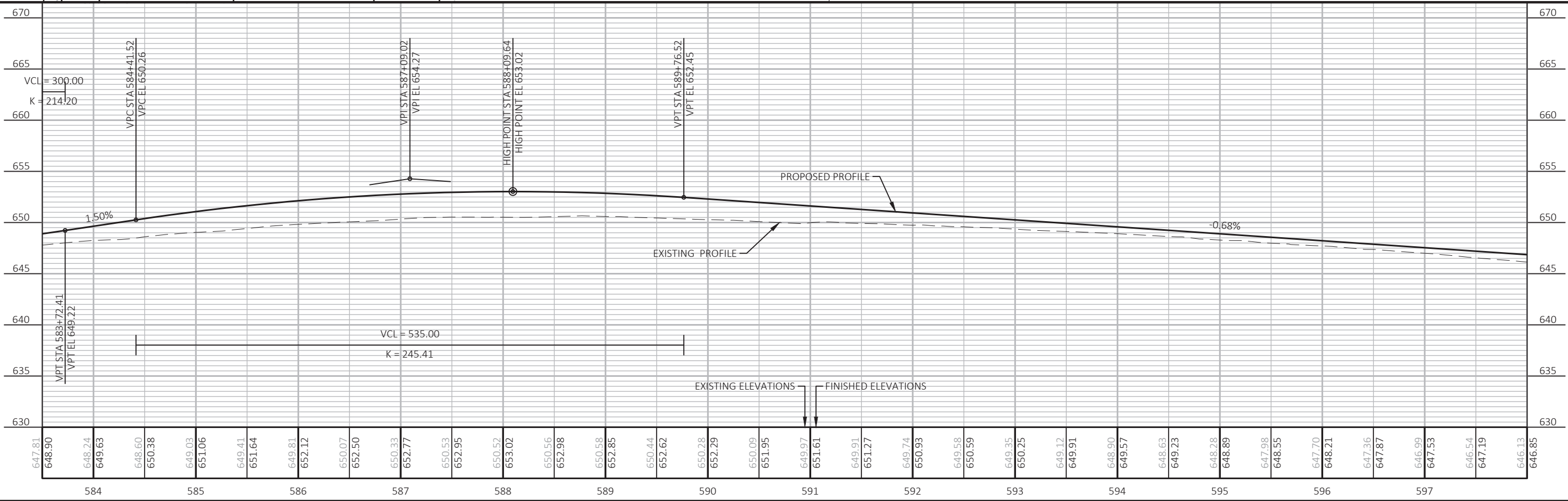
CONTROL POINT DATA

POINT NO.	FEATURE	NORTHING	EASTING	ELEVATION	DESCRIPTION
CP 905	CP	102033.56	458654.29	646.08'	FENO

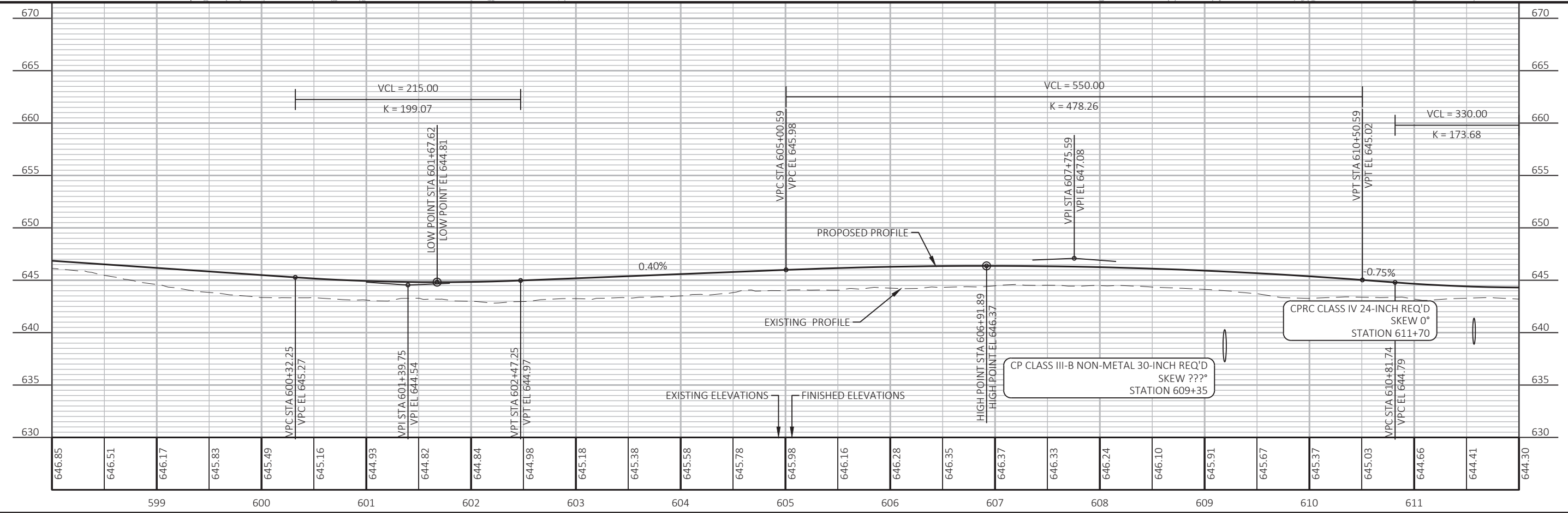
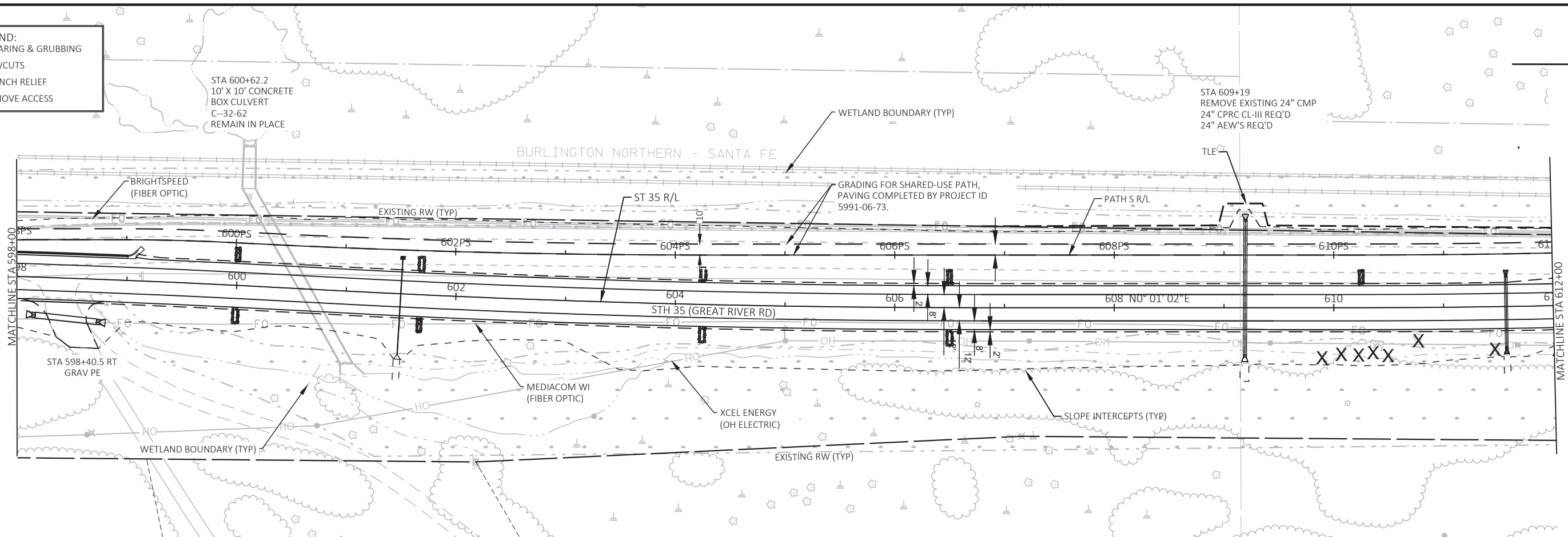


BENCHMARK TABLE

NO.	STATION	DESCRIPTION	ELEVATION
BM E	585+35.85 54.12' RT	N/A	654.92'

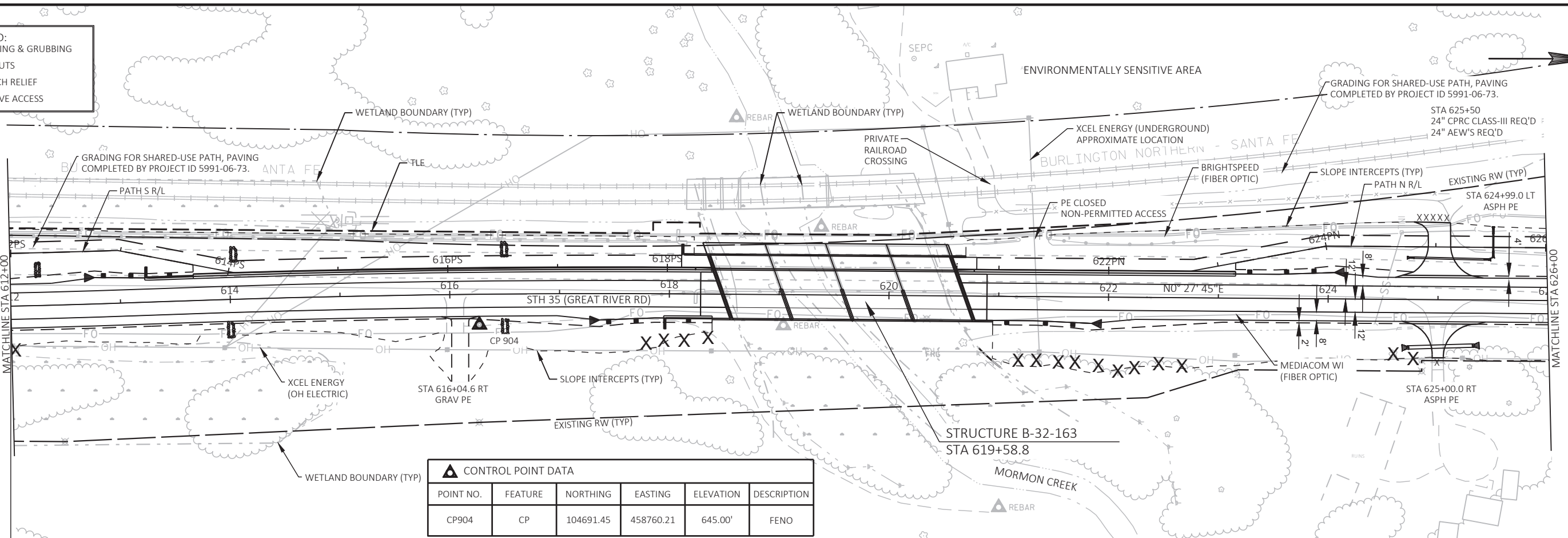


- LEGEND:
- X CLEARING & GRUBBING
 - XX SAWCUTS
 - TRENCH RELIEF
 - XX REMOVE ACCESS



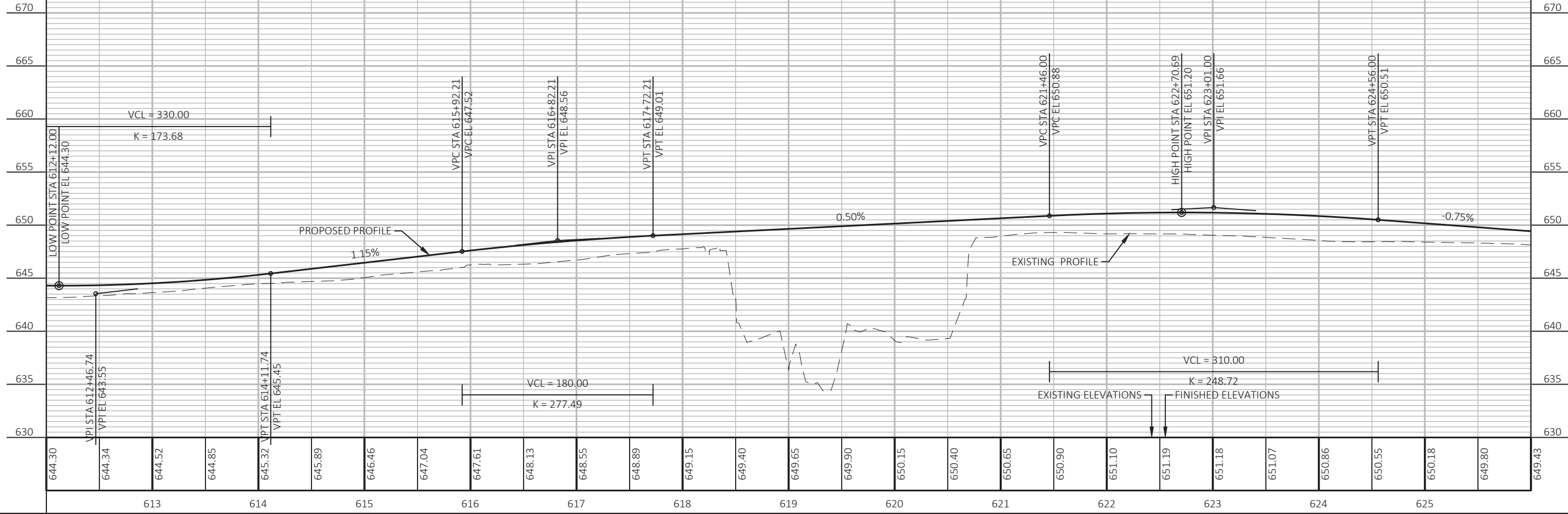
PROJECT NO: 5163-07-72 HWY: STH 35 COUNTY: LA CROSSE/VERNON PLAN PROFILE SHEET 163 E

- LEGEND:**
- X CLEARING & GRUBBING
 - XX SAWCUTS
 - TRENCH RELIEF
 - XX REMOVE ACCESS



CONTROL POINT DATA

POINT NO.	FEATURE	NORTHING	EASTING	ELEVATION	DESCRIPTION
CP904	CP	104691.45	458760.21	645.00'	FENO



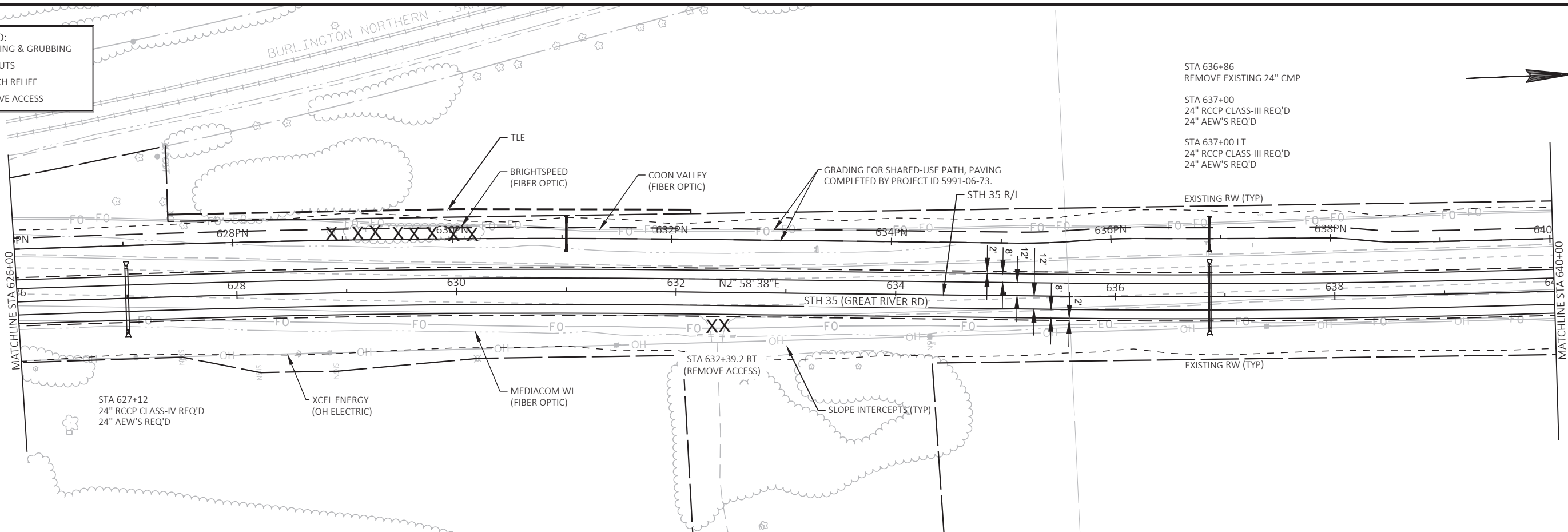
LEGEND:
 X CLEARING & GRUBBING
 .XX SAWCUTS
 TRENCH RELIEF
 XX REMOVE ACCESS



STA 636+86
 REMOVE EXISTING 24" CMP

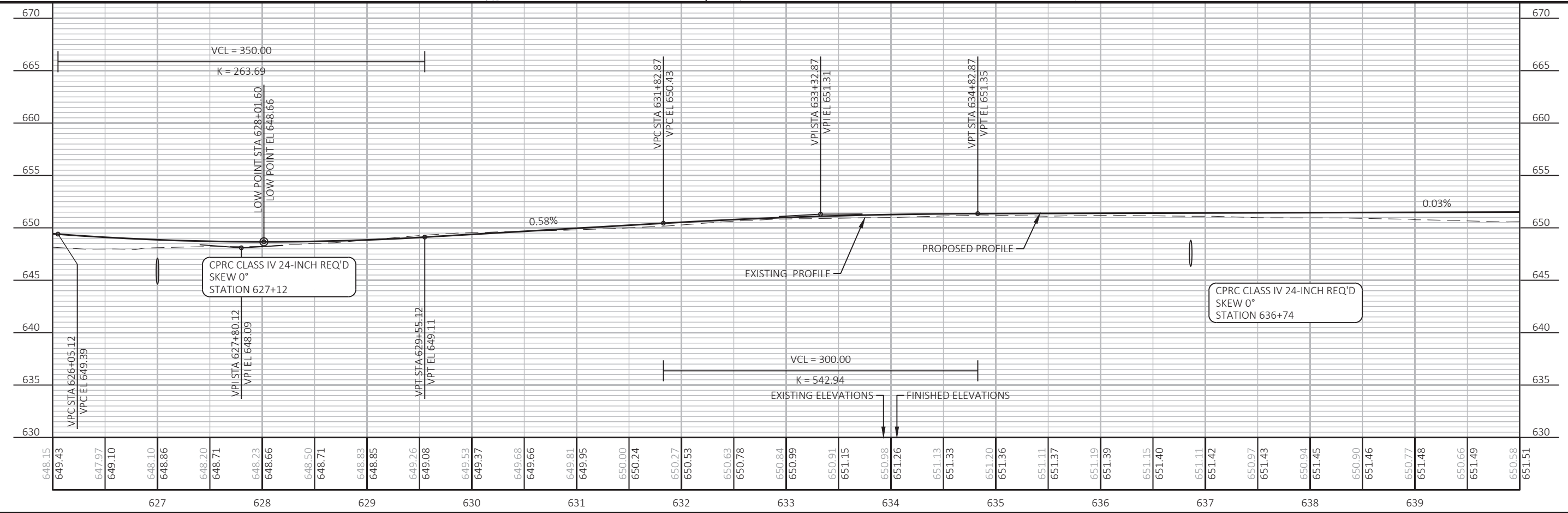
 STA 637+00
 24" RCCP CLASS-III REQ'D
 24" AEW'S REQ'D

 STA 637+00 LT
 24" RCCP CLASS-III REQ'D
 24" AEW'S REQ'D



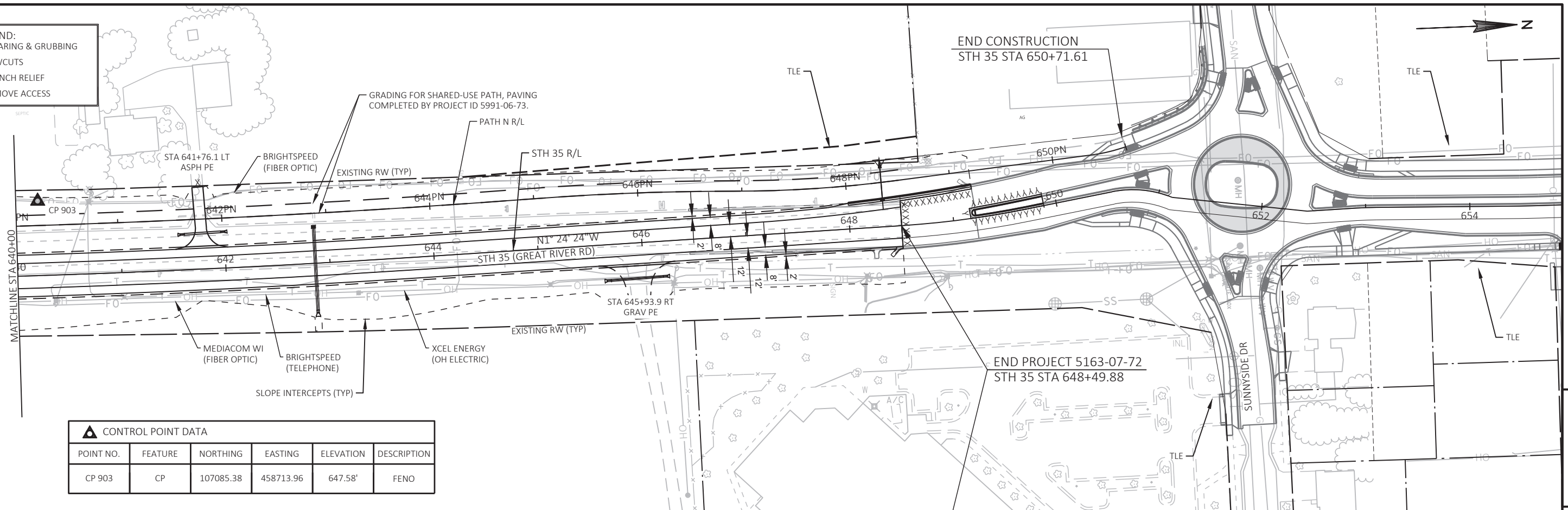
5

5



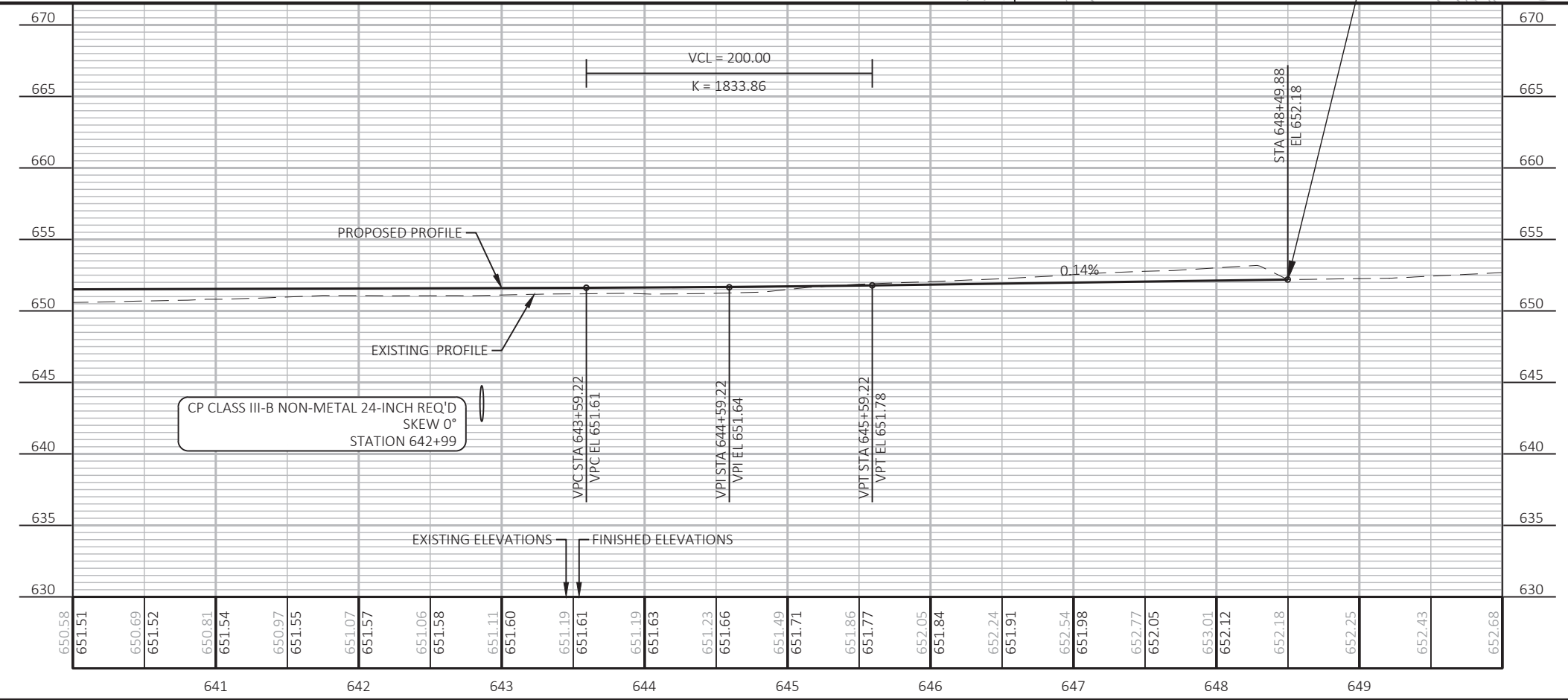
PROJECT NO: 5163-07-72 HWY: STH 35 COUNTY: LA CROSSE/VERNON PLAN PROFILE SHEET 165 E

- LEGEND:**
- X CLEARING & GRUBBING
 - .XX SAWCUTS
 - TRENCH RELIEF
 - XX REMOVE ACCESS

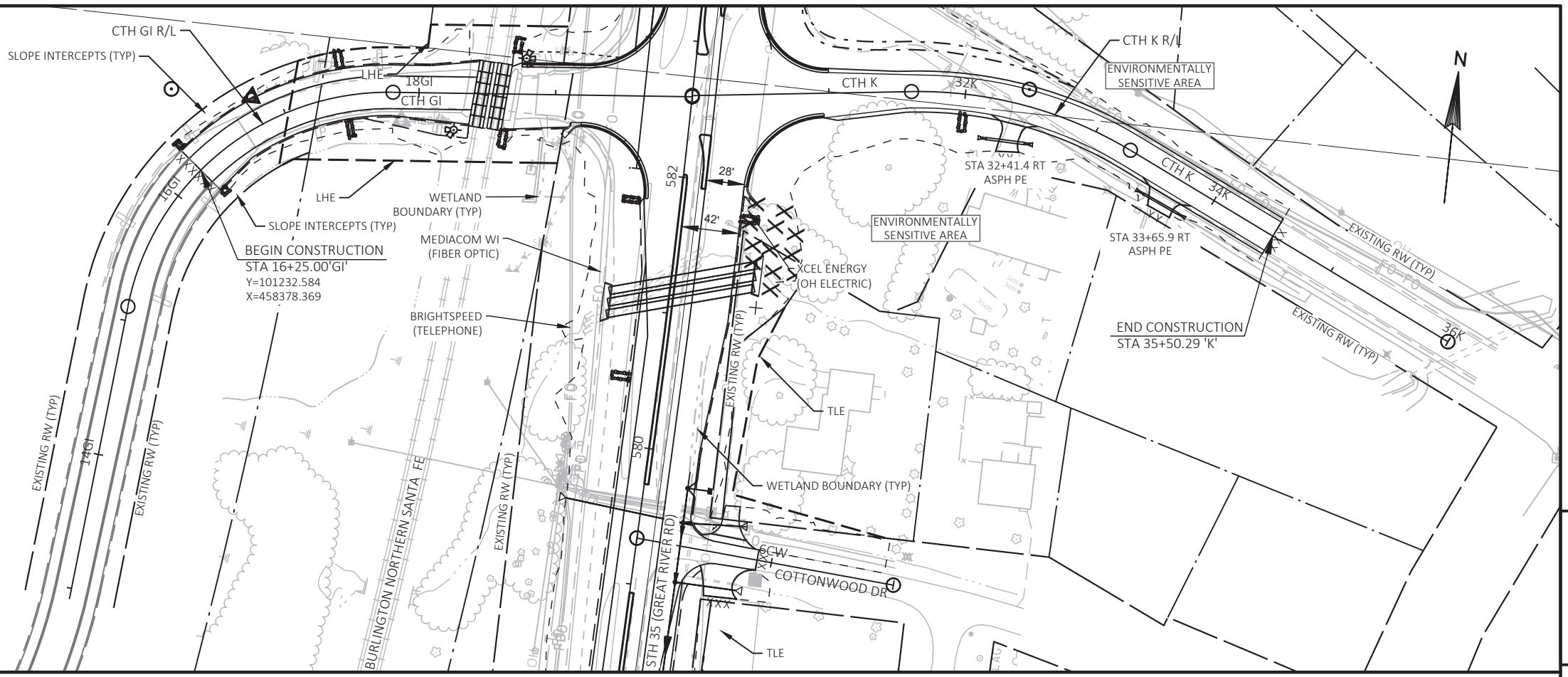


CONTROL POINT DATA

POINT NO.	FEATURE	NORTHING	EASTING	ELEVATION	DESCRIPTION
CP 903	CP	107085.38	458713.96	647.58'	FENO

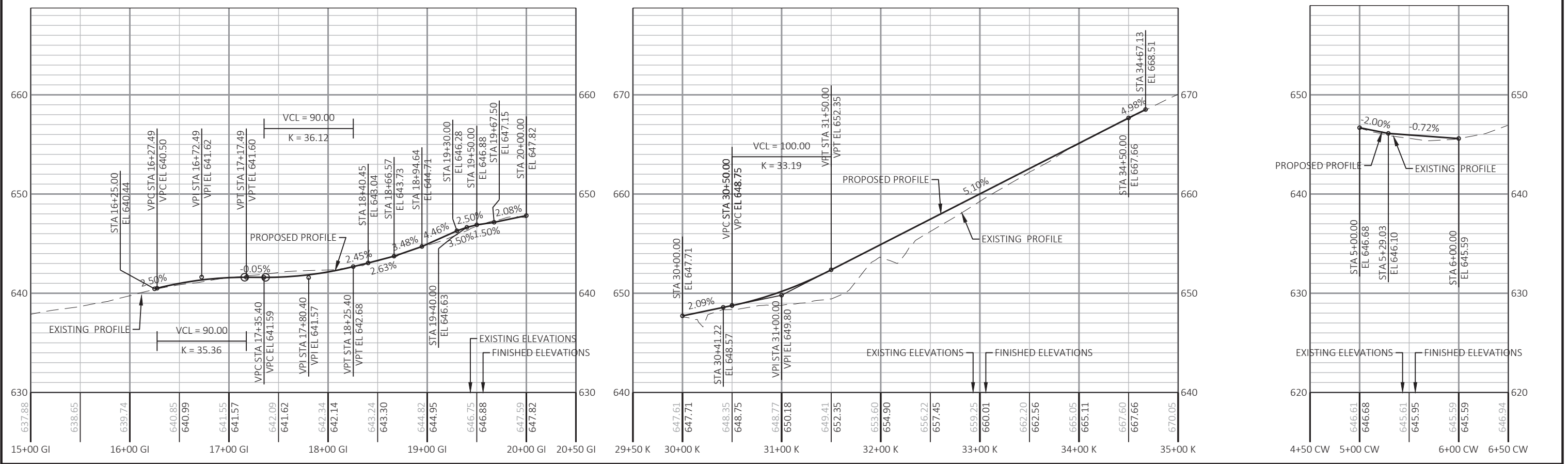


- LEGEND:**
- X CLEARING & GRUBBING
 - XX SAWCUTS
 - TRENCH RELIEF
 - XX REMOVE ACCESS



5

5



PROJECT NO: 5163-07-72 HWY: STH 35 COUNTY: LA CROSSE/VERNON PLAN PROFILE - CTH GI / CTH K SHEET 167 E

PI STA = 8+02.44 Y = 99613.403 X = 458589.687
 DELTA = 23°33'09" LT D = 163°42'08" T = 7.30' L = 14.39' R = 35.00'
 PC STA = 7+95.14 Y = 99607.278 X = 458585.721
 PT STA = 8+09.53 Y = 99620.603 X = 458590.875
 DB = N32°55'14"E DA = N09°22'06"E

PI STA = 8+62.01 Y = 99672.390 X = 458599.418
 DELTA = 52°18'46" RT D = 114°35'30" T = 24.56' L = 45.65' R = 50.00'
 PC STA = 8+37.46 Y = 99648.161 X = 458595.421
 PT STA = 8+83.11 Y = 99684.038 X = 458621.035
 DB = N09°22'06"E DA = N61°40'52"E

PI STA = 9+22.79 Y = 99702.862 X = 458655.967
 DELTA = 21°01'04" LT D = 114°35'30" T = 9.27' L = 18.34' R = 50.00'
 PC STA = 9+13.52 Y = 99698.462 X = 458647.802
 PT STA = 9+31.86 Y = 99709.898 X = 458662.011
 DB = N61°40'52"E DA = N40°39'48"E

SCENIC EASEMENT

BEGIN CONSTRUCTION STA 7+88.29

WETLAND BOUNDARY (TYP)

PERMITTED WETLAND IMPACTS
1941 SF
TYPE RPF

CULVERT PIPE R/L

SLOPE INTERCEPT (TYP)

BRIGHTSPEED COON VALLEY MEDIA COM (FIBER OPTIC)

USFWS SPECIAL USE PERMIT BOUNDARY
STA 566+93
(3) CPRC CLASS IV 36-INCH REQUIRED
SKEW 50° RHF

EXISTING R/W (TYP)

HEAVY RIPRAP REQ'D

STH 35

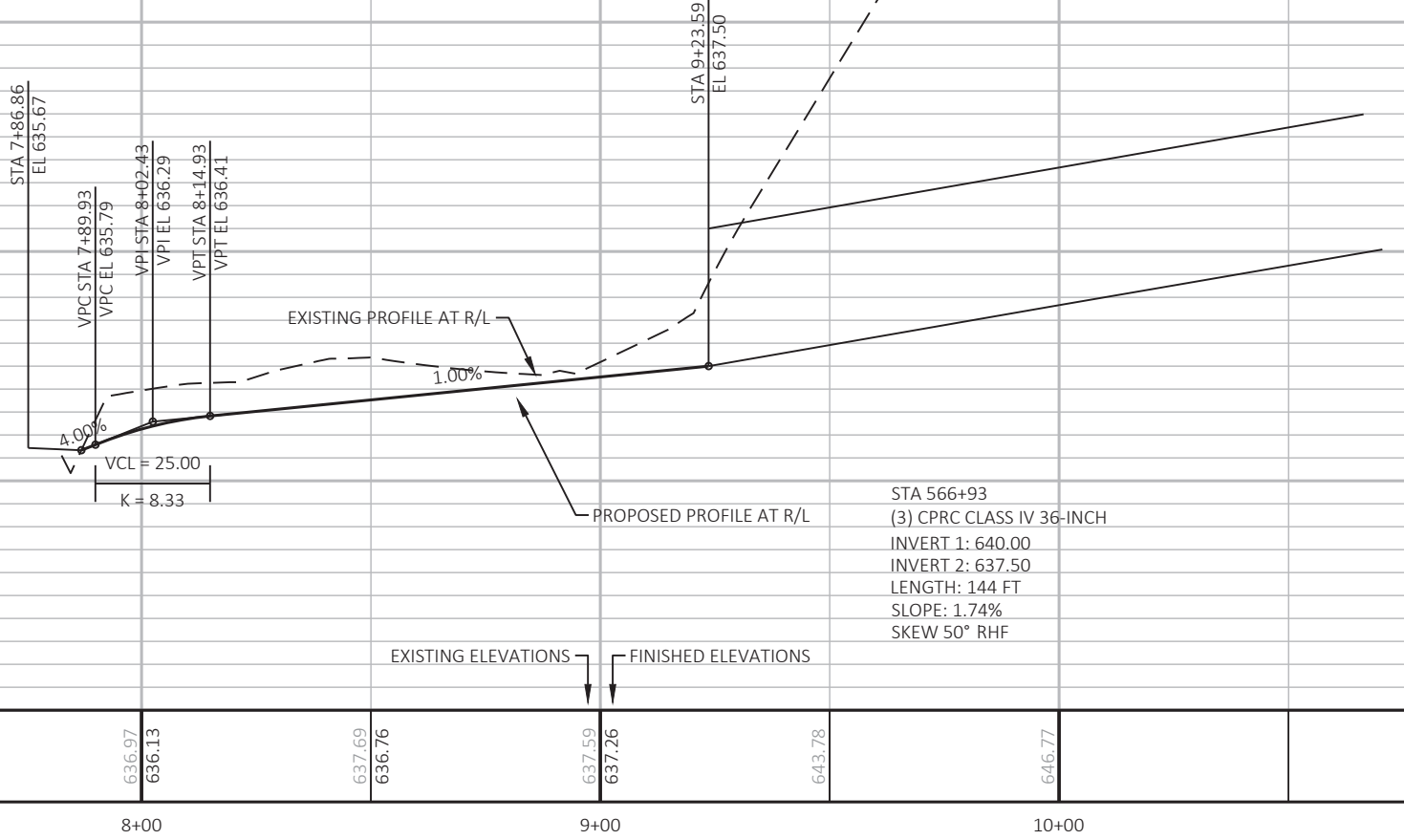
STH 35 R/L

MALLARD LN

STA 566+95.72 R/L 35 =
STA 10+00.00 R/L CULVERT PIPE
Y=99,761.587
X=458,706.414

CONTROL POINT DATA

POINT NO.	FEATURE	NORTHING	EASTING	ELEVATION	DESCRIPTION
CP 906	CP	99741.620	458744.960	644.67'	FENO



PROJECT NO: 5163-07-72

HWY: STH 35

COUNTY: LA CROSSE/VERNON

PLAN AND PROFILE: CULVERT PIPE DITCHING (MALLARD LN)

SHEET

168

E