

LA CROSSE COUNTY

Community Health Assessment 2024



LA CROSSE COUNTY
Health Department
Nationally Accredited

Executive Summary

Every three years, the La Crosse County Health Department participates in a regional community health assessment process called Compass Now. This report is a supplement to the Compass Now report. The following pages provide our local perspective on La Crosse County through three main sections:



The Process

shows how we walk through the Community Health Assessment steps

Story of Health

describes the living conditions that impacts health behavior and leads to disease, injury, and death

Core Data Set

a list of all the information that we collect to understand the health of La Crosse County residents

We work with our residents and partners to understand the unique picture of our community. Together, we determined the health priorities to focus on in the next 3 to 5 years.

Our priorities for 2025-2027

Behavioral Health

Includes:

- Mental Health
- Substance Use Prevention
- Suicide Prevention



Healthy Environment

Includes:

- Safe Housing
- Food Access & Nutrition
- Mobility & Transportation



Access to Care

Includes:

- Access to Health Services
- Dental Health



Acknowledgements

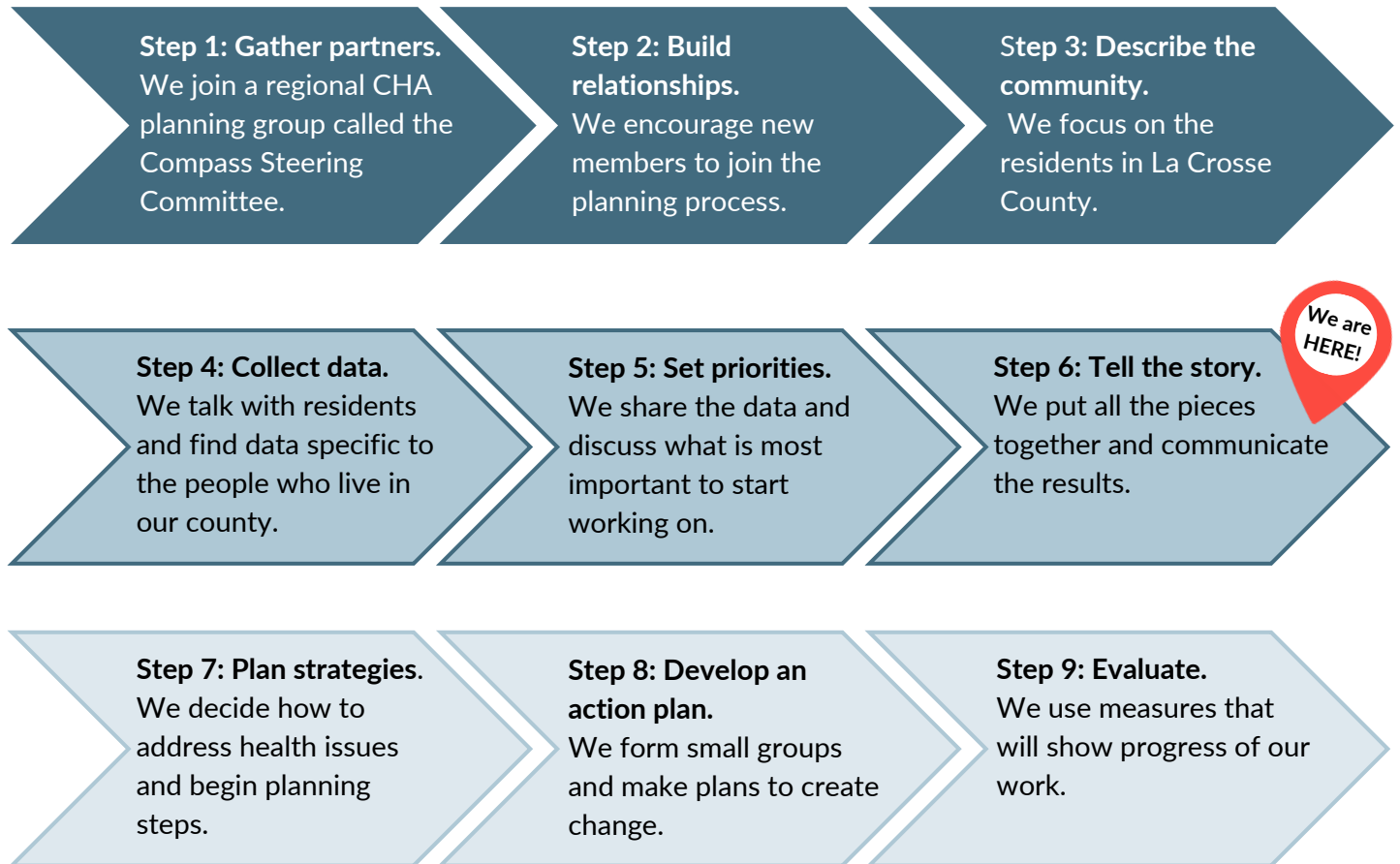
A special thank you to the Compass Now Steering Committee and the Great Rivers United Way for their time, insight, and collaboration in the La Crosse County Community Health Assessment process.



The Process

Every three years, we complete a Community Health Assessment or CHA. The CHA uses a series of steps to find the most important health priorities for our community to work on together. The Health Department, local healthcare, and our community partners follow steps outlined in two popular frameworks - American Hospital Association Community Health Improvement (ACHI) and Mobilizing Action for Planning and Partnerships (MAPP).

Here are the steps we use to guide the process:



Step 1: Gather partners

The Compass Steering Committee comes together and builds a team to get the CHA started. Great Rivers United Way leads the 6-county regional committee. More information about the Compass Now report, partnerships, and process can be found at the Great Rivers United Way [website](#).

Step 2: Build relationships

The next important step of the CHA is about relationship building. We need to understand the unique and diverse perspectives of how we all experience health. During this process, we recognize and honor the knowledge, expertise, and voice of community members.

Step 3: Describe the community

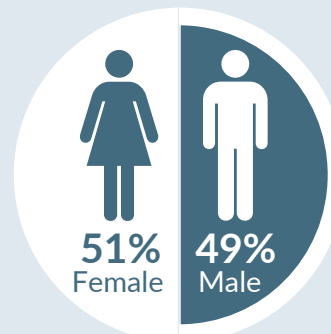
Before collecting any data, we defined the geographic boundaries for our assessment. The report is focused on La Crosse County residents. The county is located in the southwest area of Wisconsin and is home to over 120,000 people. The following boxes show the diverse make-up of our community.

Race and Ethnicity

0.4% American Indian or Alaska Native
4.7% Asian
1.6% Black or African American
2.5% Hispanic or Latino
3.7% Two or More Races
87.5% White, non-Hispanic

*All racial and ethnic categories are self-identified.

Gender



Education



94%

of 9th graders in La Crosse County will graduate in 4 years

Rural and Urban

La Crosse County has 2 cities, 4 villages, and 12 towns.

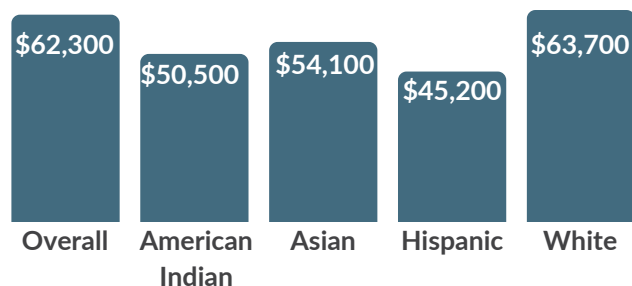


17% Rural Households



83% Urban Households

Household Income



Home Ownership

39%
renter-occupied home



61%
owner-occupied home

Languages

English is the primary language in La Crosse County.

5.5%

of La Crosse County residents speak a language other than English

Additional languages include:

- Hmong
- Spanish
- German
- French
- Norwegian
- Arabic
- Chinese
- Korean
- Hebrew
- Italian
- Tagalog
- Polish
- Japanese
- Winnebago
- Finnish
- Vietnamese
- Swedish
- Russian

Step 4: Collect data

During the summer of 2023, the Compass Now Steering Committee collected data through surveys, focus groups, and community events. La Crosse County residents shared their insights about health issues in our community. The survey questions asked about public perception and overall rating on a variety of health topics.

The public perception questions asked about the level of concern ranging from “not concerned” to “very concerned.” The list below shows the topics in order from most concerned to least concerned.

How concerned are you about...

Compass Survey Questions	La Crosse County
Illegal drug use	89%
Mental health	88%
Homelessness	87%
Alcohol use	84%
Sexual abuse or violence	80%
Suicide	79%
Domestic abuse	79%
Poverty	78%
Child abuse	77%
Prescription drug misuse	76%
School bullying	75%
Obesity	75%
Criminal activity	74%
Mental health stigma	74%
Hunger	74%
Cyber bullying	72%
Elder abuse	69%
Racism	67%
Discrimination	66%
E-cigarette use/vaping	66%
School safety	63%
Cyber security	61%
Excessive personal debt	60%
Tap water safety	51%
Tobacco use	51%
Well water safety	50%
Risk of job loss	47%
Motor vehicle traffic	43%
Safety of streets, sidewalks, and lighting	42%
Risk of foreclosure or bankruptcy	40%
Disease outbreak	34%
Hazardous materials incident	30%
Access to childcare	29%
Access to housing	27%
Responsiveness of law enforcement, EMS, and fire department	27%
Response to a flood	26%
Gambling	24%
Loose animals	19%
Terrorist activity	17%

More Concerned

Less Concerned

The overall ratings questions asked to be rated from “poor” to “excellent.” Here’s a few of the topics from the top and the bottom.

Most community members rated these as “good or excellent”



Volunteer opportunities



Family's recreational needs



Family's educational needs (K-12 and early education)

Most community members rated these as “fair or poor”



Safe, affordable housing



Shared decision making and equity



Jobs with a livable wage

Step 4: Collect data

We also looked at data that had been gathered by others. Data that we reviewed are from the Youth Risk Behavior Survey, U.S. Census Bureau, the Department of Health Services, and other sources. There is a full listing of data points and their sources in the Core Data Set starting on page 24.

Health can be experienced differently by each person in the community. As we collected the data, we looked for information that could give us a full picture of a person's health and surrounding environment. Some data points are available by age, sex, gender, race, ethnicity, zip code, income level, or education level. We begin to see where disparities exist when we look at data through these different lenses.

This level of data can show the gaps in health outcomes that exist in our community. These gaps are sometimes called health disparities. Health disparities are differences that are closely linked to the conditions in the environment where people are born, live, learn, work, play, worship, and age. These conditions include education, access to healthy foods, access to physical activity, clean air and water, racism, violence, safe housing, safe neighborhoods, and access to quality health care.

Data can show the differences that exist in health outcomes for La Crosse County residents. This can help us better understand where to focus our efforts to improve health so everyone has a fair and just opportunity to achieve their best health.

Health disparities are differences in health that are closely linked to the social determinants of health.

- Healthy People 2030

Step 5: Set priorities

La Crosse County's health needs were shared during community conversations held during the spring of 2024. The conversations were a time to learn more about the identified health needs, discuss what resources already exist, and provide feedback on the priorities that are the most important to address in La Crosse County. A short survey was also posted on social media channels to allow for more participation across community residents.

With the feedback from our community, we determined the top priority health areas. We will focus our time and efforts on these top health concerns:

Behavioral Health

Includes:

- Mental Health
- Substance Use Prevention
- Suicide Prevention



Healthy Environment

Includes:

- Safe Housing
- Food Access & Nutrition
- Mobility & Transportation



Access to Care

Includes:

- Access to Health Services
- Dental Health



During the community conversations, participants were also asked about the current resources that we have to address our health needs. This list does not include every resource, but is a reflection of the conversation that happened during the events.

Community Resources



Physical Places & Buildings

- Boys & Girls Club
- Coulee Recovery Center
- YMCA
- Scenic Bluffs
- Parenting Place
- Gundersen Health System
- Mayo Clinic Health System
- Food pantries
- Family & Children's Center
- Aging & Disability Resource Center
- Public & private school districts
- VARC
- YWCA
- St. Clare Health Mission
- REACH Center
- CouleeCap
- 3 colleges (UWL, WTC, Viterbo)
- Churches
- Neighborhood Family Clinic
- Salvation Army
- Senior low income housing



Skills in our Community

- Community Dental Care Coordinator & La Crosse Smiles
- Community Health Workers
- County Social Workers
- Healthcare staff and departments
- La Crosse County staff and departments
- City of La Crosse Fire, Police, and Zoning
- College students
- CASA for Kids
- Safe Families for Children
- RSVP
- Street Med Team
- Tri-State Ambulance
- Women, Infants, and Children
- St. Clare's Mobile Health Unit
- Family & Children's Center staff



Associations & Networks

- 1000 Friends of Wisconsin
- 4H Club
- AARP of Wisconsin
- Alliance to Heal
- Better Together
- Falls Prevention Coalition
- Great Rivers 211
- Neighborhood associations
- Rotary clubs
- City/County Homeless Action Plan
- Coulee Collaborative to End Homelessness
- Safe Kids Coalition
- Mental Health Coalition
- Health Science Consortium
- The Little Heart Project
- Findhelp



Cultural Assets & Diversity

- Hmoob Cultural and Community Agency
- Hope Restores



Funding & Philanthropy

- Generous donors
- Great Rivers United Way
- Catholic Charities
- Volunteers



Natural Resources & Outdoor Spaces

- The Nature Place
- Local parks
- Nature spots - bluffs, river, outdoor recreation areas
- GROW La Crosse



Business & Local Economy

- Local businesses
- Marine Credit Union 1st Home Program
- La Crosse Chamber of Commerce
- Altra
- Non-profits

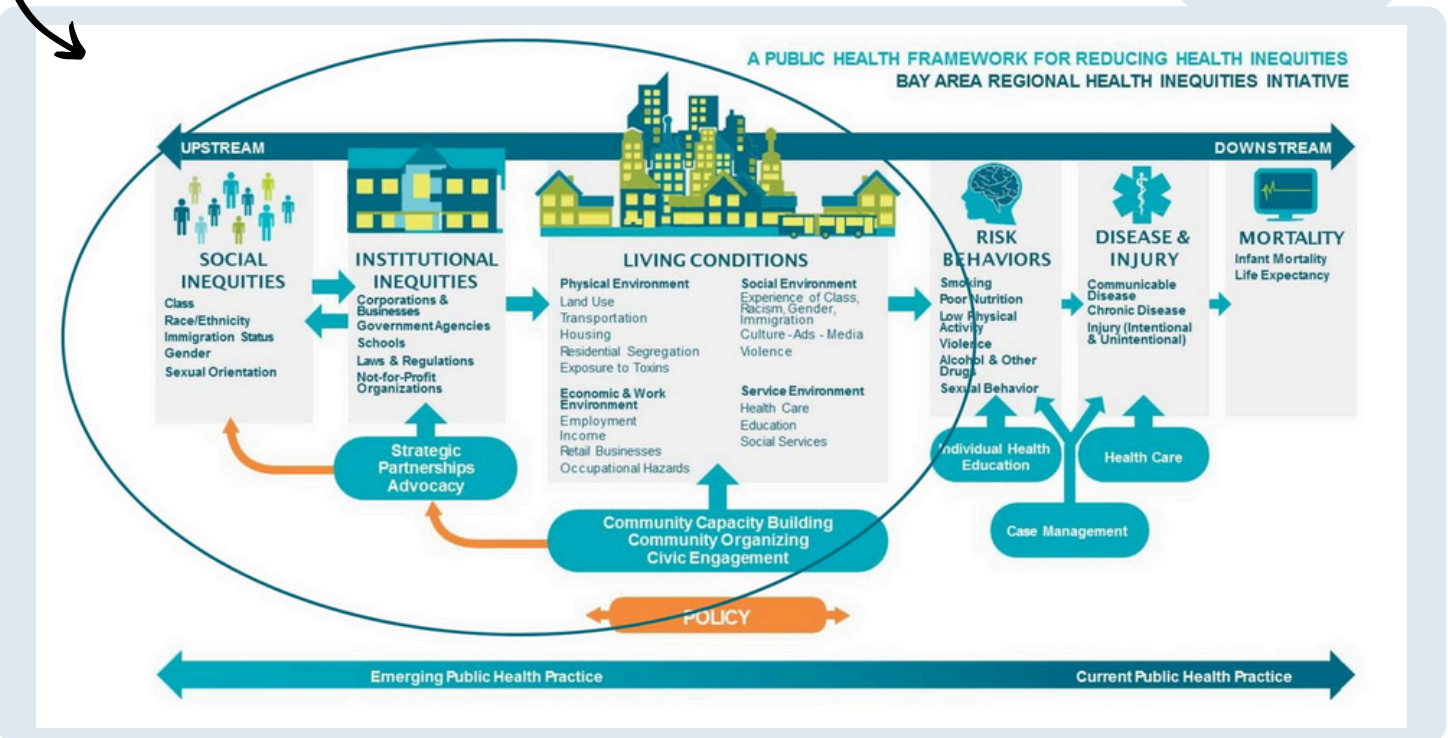
Step 6: Tell the story

Developing the story is the final step in the Community Health Assessment process. The following pages are designed to shed light on our community's health and frame the story that highlights the lived experience of our residents.

While this is the last part of the CHA, there are more steps to continue in the Community Health Improvement Plan (CHIP). The CHIP process takes this information and puts it into action to improve the health of La Crosse County. The CHA is designed to be a reflection of our community's needs and the CHIP begins the work to create positive community-wide change that enhances health for all.

In the following pages, we used the BARHII Framework to shape the story of our community's health. This framework describes how **living conditions** can affect a person's individual **health behavior**, **disease and injury**, and health outcomes.

BARHII = Bay Area
Regional Health
Inequities Initiative



You will see these three categories woven into La Crosse County's story of health with these icons.



Living Conditions

The living conditions category describes the physical, social, economic, work, and service environment.



Health Behavior

The health behavior category describes risk behaviors of an individual.



Disease & Injury

The disease & injury category describes communicable disease, chronic disease, injuries, and death.

Story of Health

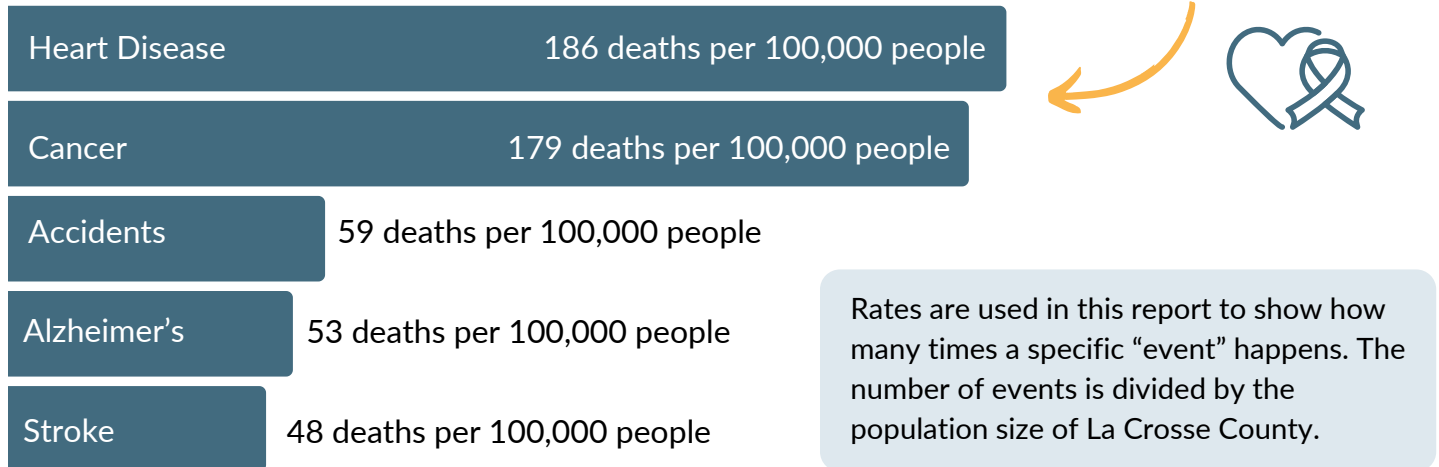
- Length of Life
- Mental Health
- Housing
- Access to Care
- Substance Use
- Nutrition & Food Access
- Dental Health
- Environment
- Maternal & Child Health
- Employment & Income
- Physical Activity
- Education
- Communicable Disease
- Injury & Violence



Length of Life

Here are three common ways to understand more about the health and the length of life in our community. Take a look at the leading causes of death, life expectancy, and years of potential life lost for La Crosse County.

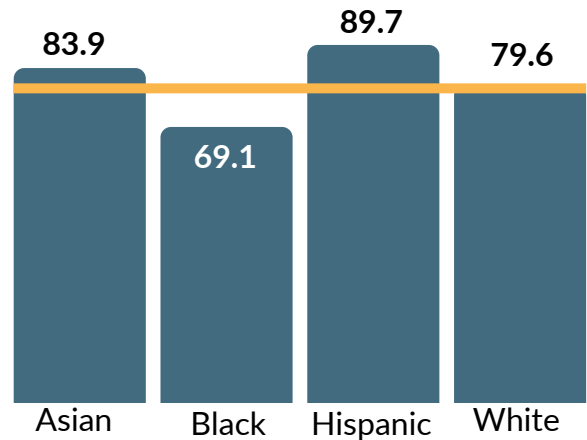
In 2021-2023, La Crosse County's leading causes of death were **heart disease and cancer**.



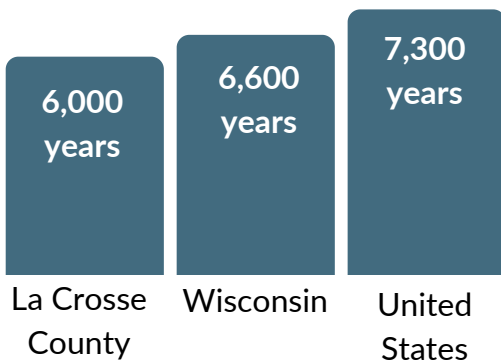
Life Expectancy

The average life expectancy for La Crosse County residents is **79.6 years**. And there are differences that can be seen when looking at race.

Life expectancy is an estimate of the average age that someone is expected to live.



Years of Potential Life Lost



This rate shows that La Crosse County residents lost fewer years of life compared to all of Wisconsin or the U.S.

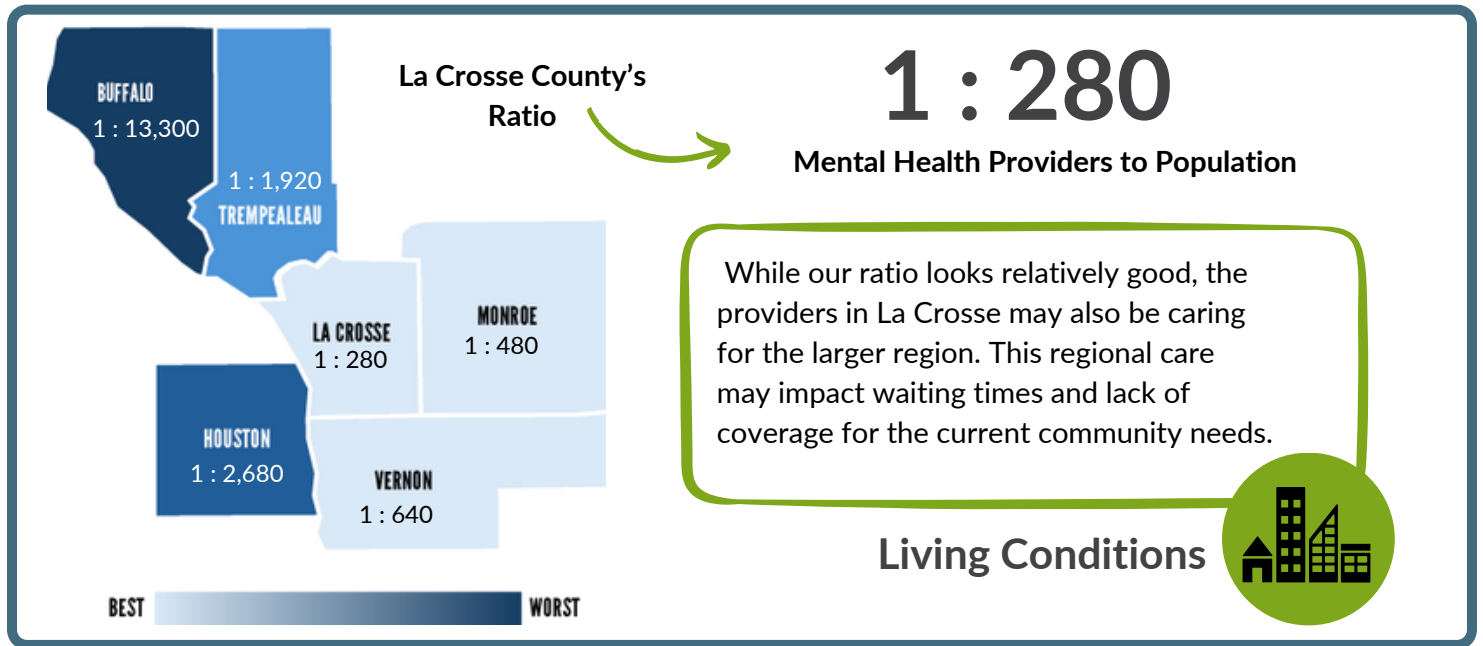
Years of Potential Life Lost is an estimate of how many years a person lost to an early death.





Mental Health

La Crosse County residents feel that mental health and self-care should be a priority for everyone in the community. Mental health is a top priority for community improvement.



Protective factors can provide support and create a positive impact for people during stressful events or situations.



Health Behavior

The number of adults with mental health concerns is rising. In La Crosse County, 14% of adults rated their mental health as "not good" for over 2 weeks in the past month.



Disease & Injury

6 out of 10

teens feel like they belong at school

7 out of 10

teens participate in school activities, teams, or clubs

8 out of 10

teens have at least one supportive adult besides a parent



5 out of 10

teens experience anxiety

3 out of 10

teens experience depression

2 out of 10

teens have considered suicide



Housing

Housing is a top priority for La Crosse County residents. Most residents are concerned about homes that can provide a space that is healthy, affordable, and safe, and creating access for all people, including those that are currently unsheltered.

Home Ownership Experience in La Crosse County

Most housing experts agree that housing is “affordable” if you pay no more than 30% of your household income toward housing costs.

Let’s apply this concept to an average household in our community.



The average annual income for a La Crosse County household is

\$62,300

30% of that amount is roughly **\$1550/month**



In 2022, the average price of a home in La Crosse County was

\$231,300



With no down payment on a 30-year loan and the average interest rate at 6.9%, the monthly cost for your house will be about

\$2,000

For most households in La Crosse County, the average home price is about **\$500** more than what would be considered affordable.

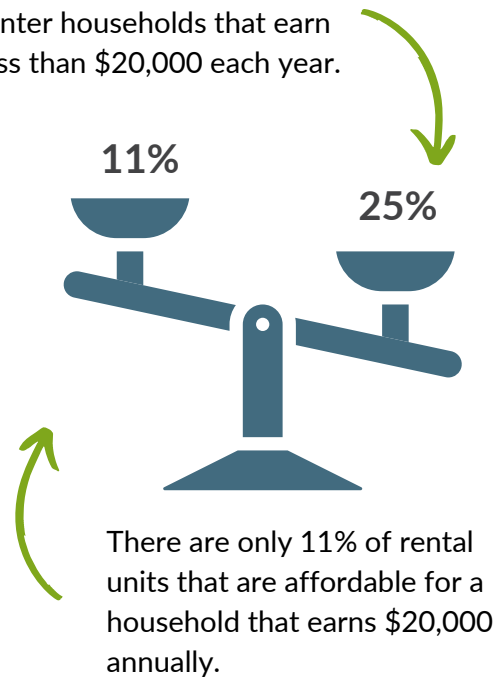
An average home becomes more affordable with a 20% down payment for the home. This down payment would be over \$45,000.

This may seem out of reach for many households, especially for those with low income.



Renting Experience in La Crosse County

There are almost 25% of renter households that earn less than \$20,000 each year.



There are not enough affordable rental units for households with low income. Over 20% of renters experience a severe housing cost burden and pay over half of their income on housing.

In La Crosse County, 12% of people experience severe housing costs. Severe housing costs are when a household pays over 50% of their annual income on housing alone. There are still another 12% who pay over 30% of their income on housing. Almost 1 out of 4 households are paying for homes outside of an affordable range.

Living Conditions





Access to Care

According to a recent survey, the majority of La Crosse County residents felt that they had good or excellent access to care for health, mental health, and dental.

The majority of La Crosse County residents have some type of health insurance to help pay for medical costs. Only 3% of children and 7% of adults are uninsured.

Living Conditions



1 : 710

La Crosse County has 1 primary care provider for every 710 people

1 in 3

people have at least one barrier to getting health care

The most common barriers are:

Scheduling



Cost



Childcare



Cancer Screenings

8 out of 10
women got a
Cervical Cancer
Screening

8 out of 10
women got a
Breast Cancer
Screening

6 out of 10
La Crosse County residents got a
Colon Cancer Screening

Primary care providers are where we seek preventive screenings for cancer and overall health care.



Health Behavior

In a recent survey, some residents voiced that they don't go to the doctor to avoid medical bills.

Desired solutions are lower costs, shorter wait times, language services, and visit time outside of the work day.

Disease & Injury



18%

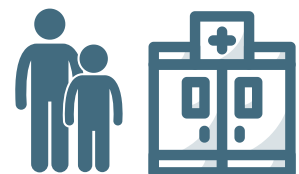
of adults

AND

20%

of children

Use the Emergency Room as their usual source of care





Substance Use

The environment and culture of a community impacts the availability and use of alcohol and other substances. La Crosse County residents are concerned about substance use in our community and would like to see improvements.

Residents are concerned about the high visibility of drug and alcohol use in our community and the impact it has on youth.

Living Conditions



1:397

La Crosse County has 1 licensed alcohol retailer for every 397 people

8%

of La Crosse County youth were offered drugs on school property



7 out of 10

teens have NEVER tried vaping products



8 out of 10

teens have NEVER drank alcohol



9 out of 10

teens have NEVER tried cigarettes, marijuana, or misused prescription drugs

Binge drinking is a concern for both youth and adults because of the serious health effects it can have on all parts of your body.



Health Behavior

1 out of 4

adults binge drank in the last 30 days

7%

of high school youth binge drank in the last 30 days

Substance use is a main reason for accidents that result in hospitalizations, injury and death.

Disease & Injury



35%

of car crash deaths involved alcohol



Opioid-related hospitalizations and deaths are more common among men and people 18-44 years old.



Substance use is connected to **7 of the top 10** leading causes of death in La Crosse County.

1 Heart Disease

2 Cancer

3 Accidents

5 Stroke

6 Chronic Lung Disease

8 Diabetes

9 Chronic Liver Disease

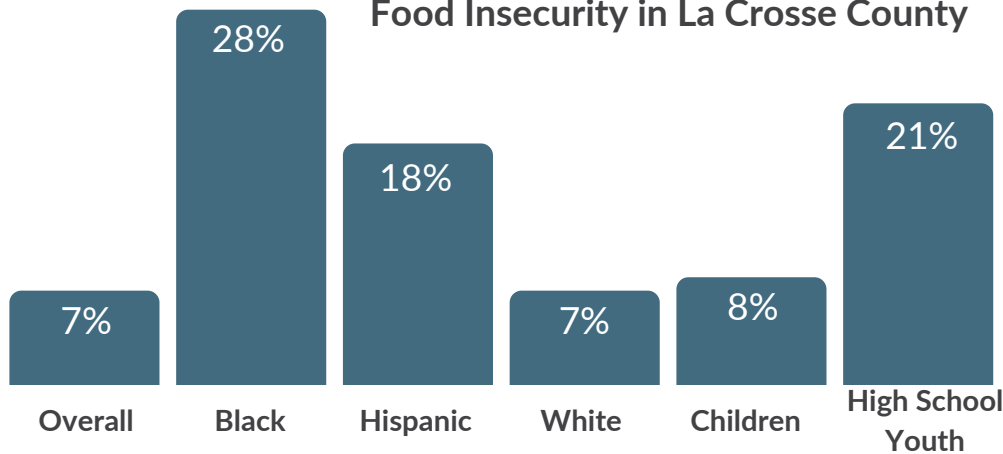


Nutrition & Food Access

Food access is a top concern for La Crosse County residents. This concern includes access to affordable food, healthy options, and food resources that are available close to people's homes.

In a recent survey, 16% of people said that the food they bought just didn't last and they didn't have money to get more. This increases to over 40% for people who make less than \$35,000 annually.

Food Insecurity in La Crosse County



Food insecurity is when a person has limited access to enough food for an active, healthy life for all members of their household.

The average cost of a meal in La Crosse County is \$4.00. This is higher than both Wisconsin and the U.S. overall. Higher food costs = more food insecurity in our community.

Living Conditions



Over 1/3 of kids are eligible for free meals at school. School meals are helping support youth by offering healthy options at breakfast and lunch.



Health Behavior



50%
of youth eat
fruit every day



47%
of youth eat
veggies every day



33%
of youth eat
breakfast every day

A lack of healthy nutrition can impact many chronic diseases, including these leading causes of death.

Disease & Injury



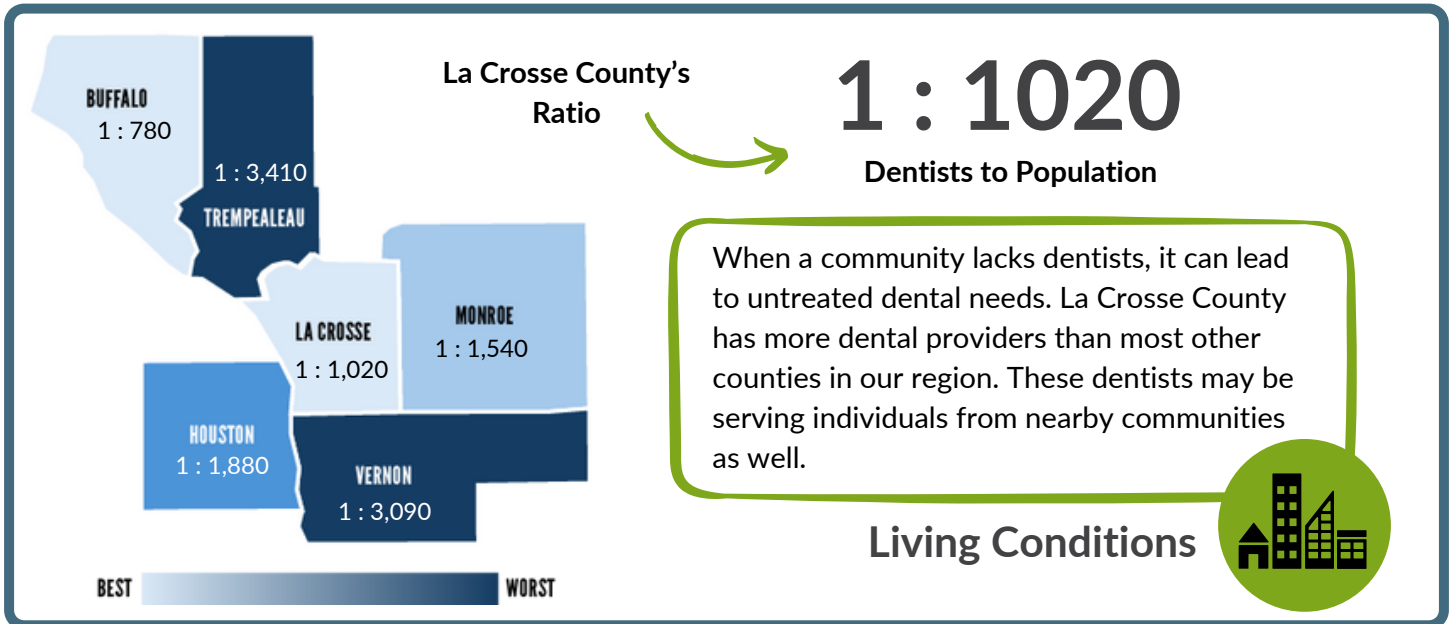
Nutrition impacts these leading causes of death in La Crosse County

- 1 Heart Disease
- 5 Stroke
- 8 Diabetes



Dental Health

Dental care is an emerging concern for La Crosse County. Residents shared that dental care is difficult because of cost, insurance issues, long waiting lists, and transportation to providers.



Almost 30% of people reported at least one barrier to receiving dental care when they needed it. The most common barriers are cost, scheduling, and having the right type of dental insurance.



Health Behavior

83% of Children

77% of High Schoolers

71% of Adults (18+)

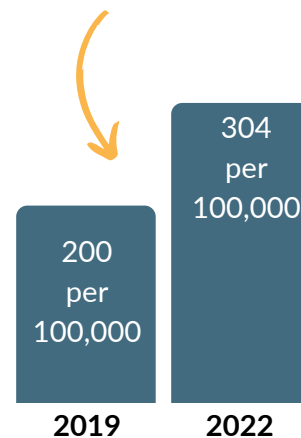
visited the dentist in the last year

... but **ONLY**

15% of Medicaid members were able to visit the dentist for a preventive dental care appointment



Emergency department visits for non-traumatic dental pain continue to rise in La Crosse County.



“

I cannot find a dentist in La Crosse that takes Medicare...it's very frustrating when you need dental work.

- Community Member

”

When preventive dental care is harder to find, more people will visit the emergency room to help with dental pain.

Disease & Injury





Environment

The environment impacts the health of all La Crosse County residents. Living conditions in our environment impact health behaviors, disease, and injury in our community.

How we build the environment

One way to think about the environment is everything we build in our space. This includes the roads, trees and plants, homes, businesses, and the connections we build between these spaces.



73%

of people feel safe in their neighborhood - AND -

Residents voiced that they would like to improve their neighborhoods with more lighting, slower traffic, better routes for cars and bikes, and more trees for shade.



1 out of **10** 
of all La Crosse County residents have a disability

- AND -

7 out of **10** 
65+ adults in La Crosse County have a disability

“Accessibility is of great concern. As someone who is fairly newly disabled, I find access to many buildings and parking very difficult to navigate.

- Community Member

I find that there are several parts of La Crosse County that could be made more accessible to people with limited mobility - bus stops, sidewalks, parking lots, and public trails.

- Community Member

Quality of the environment

Another way to think about the environment is the quality and safety of our space. This includes clean and safe air, water, roads, homes, and the overall health of the climate.



La Crosse County residents are concerned about...

- Environmental hazards in homes such as mold, lead, asbestos, radon
- Water safety because of PFAS, nitrates, and other water contaminants
- Air quality and pollution are seen as an emerging concern



Living Conditions

4 out of 10


tested homes had elevated Radon levels



1.6%

of children that were tested had an elevated lead level

Elevated lead exposures for adults and children has gone down in the last few years.

Disease & Injury





Maternal & Child Health

In La Crosse County, more than half of adults with small children are concerned about paying for and being able to access childcare.

Childcare is considered affordable when it is 7% or less of your income. Currently, childcare is not affordable for many families in our community.

Living Conditions



An average family in La Crosse County spends over 30% of their income on childcare for 2 children.

Childcare costs as much, if not more, than our house payment. It is a huge stressor.

- Community Member



Health Behavior

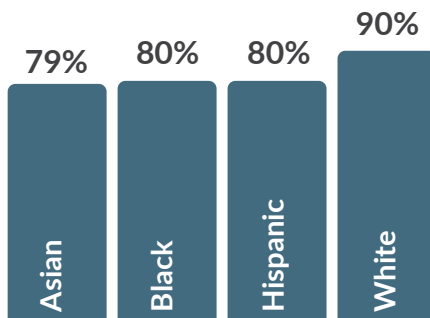
Early prenatal care can lead to healthier pregnancies and babies.

83%

of all pregnant women in La Crosse County are receiving prenatal care during their first trimester

82%

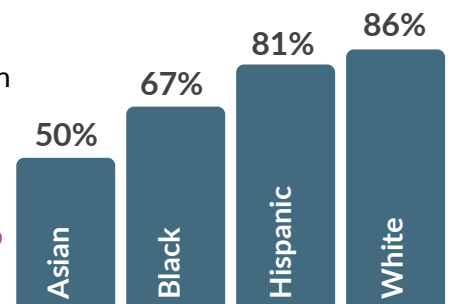
of women have started breastfeeding their baby by the time they leave the hospital



Early Prenatal Care

and

There are differences that can be seen when looking at race



Breastfeeding



Women who smoke during pregnancy are

2.4 times

more likely to give birth to a low birthweight baby

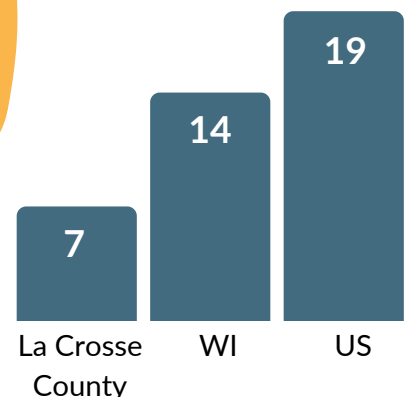
Quitting tobacco use during pregnancy is healthier for babies. Infants with low birthweight may have a harder time eating, gaining weight, and fighting infection.



Disease & Injury

Teen Birth Rate

per 1,000 females aged 15-19





Employment & Income

Many residents are concerned about the cost of living and the increase in price for food, gas, and housing costs.



2.5%

of La Crosse County residents are unemployed and seeking work

68%

of La Crosse County residents participate in the labor force (16+ years old)



“

No PTO at work to take time off for medical appointments. If I take time off it's unpaid and then it's harder to survive.

- Community Member

”

6 out of **10**

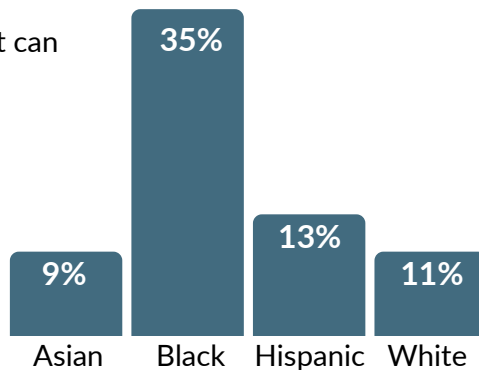
La Crosse County residents are not prepared for a job loss



12%

La Crosse County's average poverty rate

There are differences that can be seen when looking at race



Many homes in La Crosse County struggle to afford the basic costs of living. When money is tight, we have to make tough choices that can affect our health in the long run.

Living Conditions



La Crosse County's poverty rate is similar to WI and the U.S.

11%
WI

13%
U.S.

1 out of **3**



La Crosse County households are living in poverty or struggle to meet the basic costs of living

11%

of children in La Crosse County are living in poverty



There are some census tracts where childhood poverty reaches 25-50% of the children in our community.



Physical Activity

Overall, people are happy with La Crosse County's access to outdoor spaces. Over 80% of people feel that this area meets their family's recreational needs.



75%

of people in La Crosse County live within 1/2 mile of a park



86%

of people have enough access to locations for physical activity

“

I think our community is strong in recreational outdoor activities that promote a healthy lifestyle and strong resources for people and families with disabilities.

- Community Member

”

Living Conditions



Adults and youth are more physically active in La Crosse County than they are throughout Wisconsin or the United States.



Health Behavior



18% AND **11%**
adults youth

of La Crosse County residents are **NOT** physically active

65%

of La Crosse County youth exercise 4-7 days per week



28%

of adults in La Crosse County have **high cholesterol or high blood pressure**

Wisconsin is at 31% and 28%



adults

35%

of adults in La Crosse County have **obesity**

Wisconsin is at 33%

Physical activity can impact many chronic diseases, including obesity, blood pressure, and cholesterol.

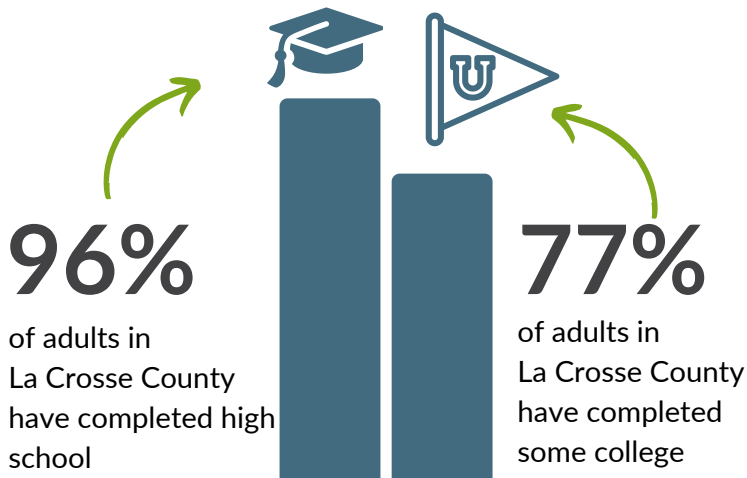
Disease & Injury





Education

School funding can have an impact on educational outcomes and opportunities for students. Our community funds local schools to support student achievement.



Over 80% of La Crosse County residents feel that we have a community that meets the educational needs of their family and that we have good quality schools.

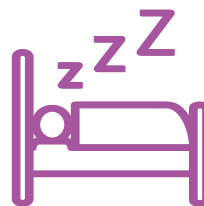
Living Conditions



Teens need 8-10 hours of sleep per night for their well-being. Lack of sleep can impact a teen's ability to concentrate and remember information from class.

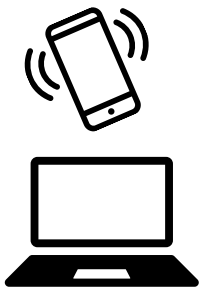


Health Behavior



1 out of **4**

La Crosse County youth get 8 or more hours of sleep per night



3 out of **4**

La Crosse County youth spend 3 or more hours on technology daily



1 out of **2**

La Crosse County youth use technology between midnight and 5 a.m. on school nights



12%

of La Crosse County residents have low literacy levels

More education is linked to better health outcomes. Being able to read and understand materials leads to better health outcomes as well.

Disease & Injury





Communicable Disease

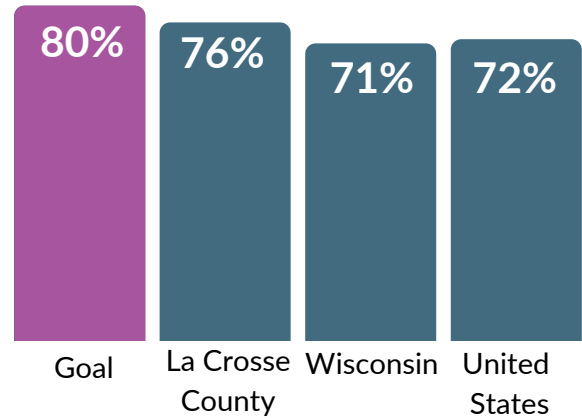
Communicable diseases are spread in many ways. Receiving recommended vaccines is one way to prevent the spread of disease.

Vaccines can prevent common diseases and can protect people when they are most vulnerable. The statewide goal is to reach at least 80% of 2-year-olds with the recommended childhood vaccines.

Health Behavior



2-year-olds who received the recommended doses of childhood vaccines in 2022



Flu vaccines can prevent illness, trips to the doctor, and severe illness or death.



35%

of people in La Crosse County received a flu vaccine for last year's flu season



Better coverage among older adults helps prevent illness

65%

of older adults (65+) received a flu vaccine for last year's flu season

In La Crosse County, the most common communicable diseases are **sexually transmitted infections**.

Sexually Transmitted Infections

477

Gastrointestinal Diseases

150

Vector-Borne Diseases

71

Respiratory Diseases

60

Environmental Diseases

23

Vaccine Preventable Diseases

17

2023 Case rates per 100,000 people

In our community, sexually transmitted infections (STIs) are most common among young people ages 18-24.

Disease & Injury



Vaccine preventable diseases include measles, mumps, chickenpox, and hepatitis A & B.



Injury & Violence

While community concerns about violence are rising, La Crosse County has seen fewer violent injuries, abuse, and youth exposure to violence.



3 out of **4**

residents feel our community is a safe place



83%

of youth feel safe at school most of the time or always

La Crosse County is rated as a safe place, yet many are concerned about racism and discrimination. Our community would like to see more shared decision-making and respect for all community members.

Living Conditions

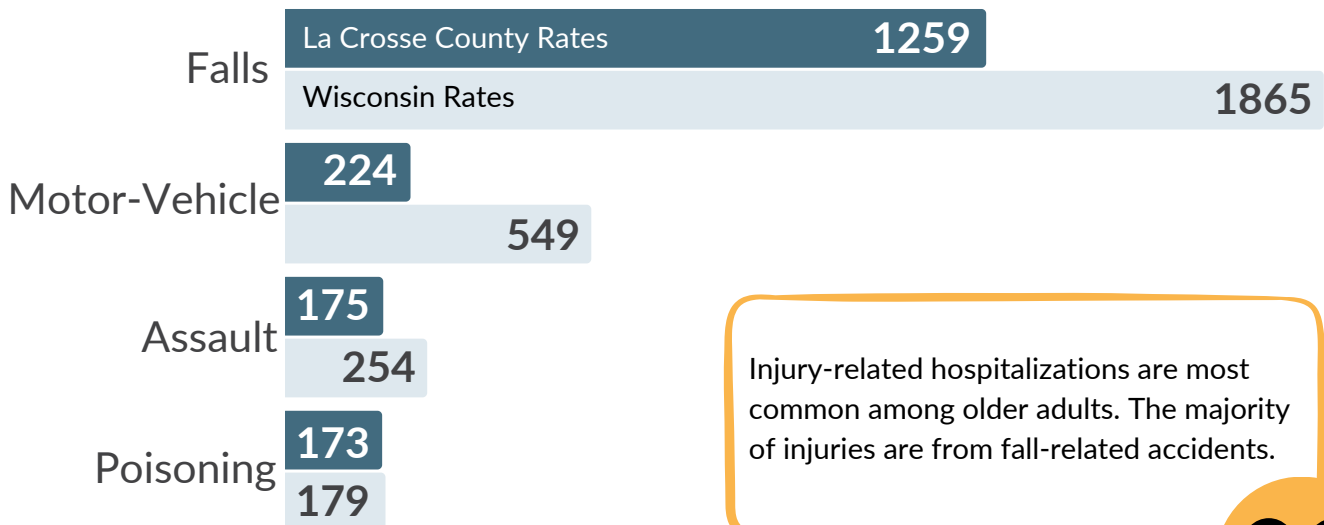


In 2021, youth said they experienced less bullying and exposure to violence at school. Youth that voiced more exposure to violence are females, students living with low income, and LGBT+ youth.

Health Behavior



In 2020-2022, injury-related hospitalizations have gone down in La Crosse County and are lower than WI overall.



Injury-related hospitalizations are most common among older adults. The majority of injuries are from fall-related accidents.

Disease & Injury



2020-2022 Case rates per 100,000 people

Core Data Set

- Health Outcomes
- Disease & Injury
- Health Behavior
- Physical Environment
- Social Determinants of Health



Health Outcomes Data

Definition of Identified Community Health Needs	La Crosse County	Wisconsin	United States	Source & Year of Data
Alcohol-attributable death rate (per 100,000)	49	54		DHS Alcohol Dashboard, 2020-2021
Female	30.6			
Male	68.3			
Alcohol-impaired driving deaths (% of motor vehicle crash deaths that involved alcohol)	35%	36%	27%	2023 County Health Rankings, 2016-2020
Average life expectancy (# of years)	79.6	78.9	78.5	2023 County Health Rankings, 2018-2020
Birth rate (per 1,000 live births)	9.39	10.48		CDC Wonder, 2019-2022
Child mortality rate (deaths under age 18 per 100,000)	30	50	50	2023 County Health Rankings, 2017-2020
Falls death rate (age-adjusted rate for age 65+ per 100,000)	108.9	176		WISH Injury-Related Mortality Module, 2019-2022
Infant mortality rate (infant deaths per 1,000 live births from 0-365 days)	5.2	5.9		WISH Infant Mortality Module, 2017-2021
Neonatal mortality rate (infant deaths per 1,000 live births from 0-28 days)	3.3	3.9		WISH Infant Mortality Module, 2017-2021
Opioid death rate (per 100,000)	21.9	22.9		DHS Opioid Dashboard, 2020-2021
1 - 17 years old	0	0.4		
18 - 44 years old	42.9	41.1		
45 - 64 years old	24	28.2		
65+ years old	0	5.6		
Premature age-adjusted mortality rate (deaths under age 75 per 100,000 population)	300	320	360	2023 County Health Rankings, 2018-2020
Premature birth (% of births earlier than 37 weeks gestation)	8.9%	10.1%	10.3%	CDC Wonder, 2019-2022
Suicide death rate (per 100,000)	17	15	14.4	CDC Wonder, 2018-2021
Teen birth rate (per 1,000 female population ages 15-19)	7	14	19	2023 County Health Rankings, 2014-2020
Asian	17			
Black	33			
Hispanic	18			
White	5			
Years of potential life lost (years of potential life lost before age 75 per 100,000 population)	6000	6600	7300	2023 County Health Rankings, 2018-2020

Disease & Injury Data

Definition of Identified Community Health Needs	La Crosse County	Wisconsin	United States	Source & Year of Data
Anxiety (% of Medicare beneficiaries who had been diagnosed with anxiety)	21%	18%	19%	Centers for Medicare & Medicaid Services, 2022
Arthritis Prevalence (% of adults)	24.2%	24.2%	25.8%	CARES and BRFSS, 2021
Assault-related injury age-adjusted rate (per 100,000)	175.1	253.9		WISH Injury-Related Emergency Dept Visits Module, 2020-2022
Asthma Prevalence (% of adults)	10.5%	10.8%	9.8%	CARES and BRFSS, 2021
Asthma Prevalence (% of Medicare beneficiaries)	4.9%	4.8%	5.0%	CARES and Centers for Medicare & Medicaid Services, 2018
Cancer Incidence Rates (age-adjusted rate per 100,000)	492.39	505.03		Wisconsin Cancer Reporting System, 2016-2018
Cancer Prevalence (% of adults)	6.5%	8.0%	7.5%	CARES and BRFSS, 2021
Cardiovascular disease hospitalization rate (age-adjusted rate for 65+ adults)	45.8	52.4	56.8	CDC Interactive Atlas, 2018-2020
Cardiovascular Disease Prevalence (% of adults)	5.0%	3.6%	3.8%	CARES and BRFSS, 2021
Child abuse victim rate (per 1,000)	1.4	3.2		WI Department of Children and Families, 2022
Chlamydia cases (rate per 100,000)	519	439		DHS STI Surveillance Report, 2022
Chronic alcohol-related ER hospitalization rate (per 100,000)	728.1	596.4		DHS Alcohol Dashboard, 2020-2021
1 – 17 years old	0	0.8		
18 – 44 years old	881	785.4		
45 – 64 years old	1371	999		
65+ years old	447	359.8		
Depression (% of Medicare beneficiaries who had been diagnosed with depression)	22%	18%	19%	Centers for Medicare & Medicaid Services, 2022
Diabetes Prevalence (% of adults)	7.8%	9.1%	10.9%	CARES and BRFSS, 2021
Emergency department visits for non-traumatic dental pain rate (per 100,000)	304.3	361.7		WI Environmental Public Health

Definition of Identified Community Health Needs	La Crosse County	Wisconsin	United States	Source & Year of Data
				Data Tracker, 2022
Fall-related injuries age-adjusted rate (per 100,000)	1259.2	1865.5		WISH Injury-Related Emergency Dept Visits Module, 2020-2022
Gastrointestinal disease cases (rate per 100,000)	145.6			WEDSS, 2021-2023
Gonorrhea cases (rate per 100,000)	106	150		DHS STI Surveillance Report, 2022
High blood pressure prevalence (% of adults)	27.5%	27.8%	32.4%	CARES and BRFSS, 2021
High cholesterol prevalence (% of adults)	28.4%	30.7%	35.7%	CARES and BRFSS, 2021
Injury-related hospitalizations age-adjusted rate (per 100,000)	268.6	373.3		WISH Injury-Related Emergency Dept Visits Module, 2020-2022
American Indian & Alaska Native	430.9	465.5		
Asian	109.8	169.6		
Black	644.4	594.7		
Hispanic	234.7	300.6		
White	260.9	343.4		
Low birthweight babies (% born at less than 2,500 grams)	7.1%	7.7%	8.4%	CDC Wonder, 2019-2022
Motor vehicle accident age-adjusted rate (per 100,000)	224	549		WISH Injury-Related Emergency Dept Visits Module, 2020-2022
Motor vehicle injury-related ED visit age-adjusted rate (per 100,000)	238.4	571.4		WISH Injury-Related Emergency Dept Visits Module, 2019-2022
Obesity prevalence (% of adults)	35.0%	33.3%	33.9%	CARES and BRFSS, 2021
Opioid-related ER hospitalizations (rate per 100,000)	59.3	50.3		DHS Opioid Dashboard, 2020-2022
Poisoning age-adjusted rate (per 100,000)	173.1	179.4		WISH Injury-Related Emergency Dept Visits Module, 2020-2022
Poor mental health for 14+ days (% for adults)	14.3%	14.7%	14.6%	CARES and BRFSS, 2021
Poor physical health for 14+ days (% for adults)	9.3%	9.1%	10.9%	CARES and BRFSS, 2021

Definition of Identified Community Health Needs	La Crosse County	Wisconsin	United States	Source & Year of Data
Respiratory disease rate (per 100,000)	13961.4			WEDSS, 2021-2023
Stroke hospitalization rate (age-adjusted rate for 65+ adults)	9.9	9.8	11.2	CDC Interactive Atlas, 2018-2020
Stroke Prevalence (% of adults)	2.5%			CARES, 2018-2020
Vaccine preventable disease rate (per 100,000)	20.4			WEDSS, 2021-2023
Vector-borne disease rate (per 100,000)	87.5			WEDSS, 2021-2023
Youth anxiety (% of youth who had experienced significant problems with anxiety in the past 12 months)	49%	52%		DPI YRBS survey, 2021
Youth depression (% of youth who experienced prolonged, disruptive sadness in the past 12 months)	31%	34%		DPI YRBS survey, 2021

Health Behavior Data

Definition of Identified Community Health Needs	La Crosse County	Wisconsin	United States	Source & Year of Data
Binge drinking prevalence (% of adults)	24.1%	21.9%	15.4%	CARES and BRFSS, 2021
Breast cancer screening prevalence (% females ages 50-74)	75.6%	81.0%	78.3%	CARES and BRFSS, 2020
Breastfeeding at 6 months among WIC participants (%)	45.6%	44.8%		ROSIE, 2023
Breastfeeding initiation among WIC participants (%)	73.8%	75.4%		ROSIE, 2023
Breastfeeding initiation by the time of hospital discharge (%)	82.1%	79.9%	72.4%	CDC Wonder, 2019-2022
Asian	49.6%	67%	63.5%	
Black	67%	54.5%	69.8%	
Hispanic	80.5%	77.9%	66.7%	
White	86.4%	84.3%	74%	
Cervical cancer screening prevalence (% females ages 21-65)	81.0%	78.4%	77.7%	CARES and BRFSS, 2020
Child Protective Services report rate (per 1,000 children)	19.6	27.9		WI Department of Children and Families, 2022
Colon cancer screening prevalence (% of adults ages 50-75)	59.3%	67.5%	74.3%	CARES and BRFSS, 2020
Current smokers (% of adults)	14.7%	13.6%	14.4%	CARES and BRFSS, 2021
Dental care visit in last year (% adults 18+)	71.4%	71.8%	66.7%	CARES and BRFSS, 2020
First drink of alcohol before age 13 (% of youth that drink that also had their first drink of alcohol before age 13)	31%			DPI YRBS survey, 2021
First-trimester prenatal care (% of mothers)	83.1%	77.5%		WISH Prenatal Care Module, 2021

Definition of Identified Community Health Needs	La Crosse County	Wisconsin	United States	Source & Year of Data
HPV vaccine (% of 14-year-old with complete 2 dose series)	59%			WIR, 2023
Immunization benchmark (% of 24-months-olds who received the recommended doses of DTaP, Polio, MMR, Hib, Hepatitis B, Varicella, and Pneumo)	76%	71%	72%	WIR and National Immunization Registry, 2022-2023
Influenza vaccine coverage (%)	35.0%	37.6%		WIR, 2022-2023
5 – 17 years old	25%	28.8%		
18 – 49 years old	26%	26.5%		
50 – 64 years old	45%	39.4%		
65+ years old	65%	68%		
Influenza vaccine coverage for Medicare enrollees (%)	64%	56%	51%	2023 County Health Rankings, 2020
Insufficient sleep (% adults getting less than 7 hrs sleep per night)	32.3%	31%	33%	CARES and BRFSS, 2020
Late prenatal care initiation (% of births with prenatal care started in 2nd or 3rd trimester)	11.7%	15.8%	19.9%	CDC Wonder, 2019-2022
Asian	21.2%	20.8%	16.3%	
Black	20%	25.9%	27.5%	
Hispanic	20.3%	23.6%	25%	
White	9.8%	13.9%	18.3%	
Oral preventive care (% Medicaid members)	15.4%	20.8%		WI Environmental Public Health Data Tracker, 2022
Physical inactivity (% adults with no leisure-time physical activity)	18.4%	20.3%	23.7%	CARES and BRFSS, 2021
School connectedness (% students who agree/strongly agree that they belong at school)	63%	61%		DPI YRBS survey, 2021
Tobacco use during pregnancy (% of mothers who reported using tobacco during pregnancy)	7.6%	7.3%	4.9%	CDC Wonder, 2019-2022
Youth adequate sleep (% who are sleeping 8+ hrs per night)	27%	28%		DPI YRBS survey, 2021
Youth alcohol use (% who used alcohol in last 30 days)	19%	26%		DPI YRBS survey, 2021
Youth binge drinking (% who binge drank in last 30 days)	7%			DPI YRBS survey, 2021
Youth breakfast consumption (% who ate breakfast every day for the past 7 days)	33%	27%		DPI YRBS survey, 2021
Youth bullying (% who have been bullied on school property in last 12 months)	17%	18%		DPI YRBS survey, 2021
Youth dental visit within the past year (%)	77%	74.6%		DPI YRBS survey, 2021
Youth emotional support (% who get emotional help when needed most of the time/always)	22%	22%		DPI YRBS survey, 2021
Youth exposure to violence (% who experienced rape, sexual assault, or intimate partner violence)	15%			DPI YRBS survey, 2021
Youth fruit consumption (% who ate fruit every day for the past 7 days)	50%			DPI YRBS survey, 2021

Definition of Identified Community Health Needs	La Crosse County	Wisconsin	United States	Source & Year of Data
Youth high screen time use (% who spent 3+ hrs/day on tech device)	75%	75%		DPI YRBS survey, 2021
Youth marijuana use (% who used marijuana in the last 30 days)	11%	14%		DPI YRBS survey, 2021
Youth medication misuse (% who misused OTC or prescription meds)	10%	11%		DPI YRBS survey, 2021
Youth physical activity (% with 4-7 days of exercise in last week)	65%	53%		DPI YRBS survey, 2021
Youth physical inactivity (% with zero days of exercise in last week)	11%	13%		DPI YRBS survey, 2021
Youth seatbelt use (% who wear a seatbelt most of the time or always)	92%			DPI YRBS survey, 2021
Youth sexting (% who sent/received/shared nude photos or sexual images in the last 30 days)	15%	19%		DPI YRBS survey, 2021
Youth technology use at night (% who use tech between 12am and 5am on school nights)	50%	51%		DPI YRBS survey, 2021
Youth use of other illegal drugs (% who ever used any illegal drug besides marijuana)	2%	4%		DPI YRBS survey, 2021
Youth vegetable consumption (% who ate vegetables every day for the past 7 days)	47%			DPI YRBS survey, 2021
Youth violence and weapons at school (% who were in a fight at school or threatened with a weapon at school)	12%	14%		DPI YRBS survey, 2021
Youth who ever tried cigarettes (% who ever used)	11%	17%		DPI YRBS survey, 2021
Youth who ever used vaping products (%)	26%	32%		DPI YRBS survey, 2021
Youth who had sexual intercourse in last 30 days (%)	18%	21%		DPI YRBS survey, 2021
Youth who have at least one teacher/adult at school to talk to (%)	68%	67%		DPI YRBS survey, 2021
Youth who intentionally self-harmed without intending to die (% in the last 12 months)	20%	22%		DPI YRBS survey, 2021
Youth who seriously considered suicide (% in the past 12 months)	17%	18%		DPI YRBS survey, 2021
Youth who use cigarettes in last 30 days (%)	2%	5%		DPI YRBS survey, 2021
Youth who use cigarettes, chew, cigars, or cigarillos in last 30 days (%)	4%			DPI YRBS survey, 2021
Youth who used a condom during last sexual intercourse (%)	59%	59%		DPI YRBS survey, 2021
Youth who used vaping products in last 30 days (%)	12%	15%		DPI YRBS survey, 2021

Physical Environment Data

Definition of Identified Community Health Needs	La Crosse County	Wisconsin	United States	Source & Year of Data
Access to grocery stores (% of people that have low access to grocery store within 1/2 mile (urban) or 10 miles (rural))	52.9%			U.S. Department of Agriculture Food Access

Definition of Identified Community Health Needs	La Crosse County	Wisconsin	United States	Source & Year of Data
				Research Atlas, 2019
Access to grocery stores for people with low income (% of people with low income that have low access to grocery store within 1/2 mile (urban) or 10 miles (rural))	16.1%			U.S. Department of Agriculture Food Access Research Atlas, 2019
Access to parks (% of people living within 1/2 mile of a park)	75.3%	59.9%		National Environmental Public Health Tracking Network, 2020
Affordable rental units for households with an income of less than \$20,000 (%)	11.4%			Policy Map, 2016-2020
Air quality based on days that are over the National Ambient Air Quality Standards (%)	0.3			National Environmental Public Health Tracking Network, 2021
Alcohol outlet density (people per 1 liquor license)	396.9	345.04		WI Environmental Public Health Data Tracker, 2020-2021
Average daily density of fine particulate matter (mcg/cubic meter)	7.6	7.8	7.4	2023 County Health Rankings, 2019
Carbon monoxide poisoning (age-adjusted rate per 100,000)	3.26	6.64		WI Environmental Public Health Data Tracker, 2018-2022
Elevated arsenic levels in private wells with test results above 10 mg/L (%)	2.5%	5.4%		WI Environmental Public Health Data Tracker, 1988-2021
Elevated lead levels among children under age 6 (%)	1.6%	2.8%		WI Environmental Public Health Data Tracker, 2021
Elevated nitrate levels in private wells with results above 10 mg/L (%)	15.6%	10.9%		WI Environmental Public Health Data Tracker, 1988-2021
Excess risk for having at least 1 of 4 severe housing problems for families that make less than 50% of the median income for La Crosse County	0.624	0.604	0.54	U.S. Department of Housing and Urban Development, 2016-2020

Definition of Identified Community Health Needs	La Crosse County	Wisconsin	United States	Source & Year of Data
Fluoride in public water system (% of population with access to fluoridated public water system)	95.3%	84.9%		WI Environmental Public Health Data Tracker, 2022
Home value based on the median value of owner-occupied housing units (\$)	\$231,300	\$252,800		U.S. Census Bureau, 2022 ACS 1-year estimate
Homes with elevated radon results above 4 pCi/L (%)	42%			National Environmental Public Health Tracking Network, 2022
Household that has at least 1 of 4 severe housing problems (includes: overcrowding, high housing costs, lack of kitchen facilities, or lack of plumbing facilities)	13.1%	12.9%	16.7%	U.S. Department of Housing and Urban Development, 2016-2020
Households with housing cost burden over 30% of income (%)	24.6%	24.6%	28.8%	U.S. Department of Housing and Urban Development, 2016-2020
Housing units that are owner occupied (%)	60.9%	68.1%	65.2%	U.S. Census Bureau, 2022 ACS 1-year estimate
Housing units that are renter occupied (%)	39.1%	31.9%	34.8%	U.S. Census Bureau, 2022 ACS 1-year estimate
New cases of elevated lead levels among adults above 5 mg/dl (rate per 100,000 workers)	11.63	10.68		WI Environmental Public Health Data Tracker, 2022
Pre-1980 housing (% of units built prior to 1980)	56.3%			U.S. Census Bureau, 2022 ACS 1-year estimate
Severe housing cost burden for households that spend 50% or more on housing (%)	12%	11%	14%	2023 County Health Rankings, 2017-2021
Severe housing cost burden for owners that spend 50% or more on housing (%)	4.9%	6.6%		U.S. Department of Housing and Urban Development, 2016-2020

Definition of Identified Community Health Needs	La Crosse County	Wisconsin	United States	Source & Year of Data
Severe housing cost burden for renters that spend 50% or more on housing (%)	22.0%	19.4%		U.S. Department of Housing and Urban Development, 2016-2020
Share of renters with an income less than \$20,000 (%)	24.5%			Policy Map, 2016-2020

Social Determinants of Health Data

Definition of Identified Community Health Needs	La Crosse County	Wisconsin	United States	Source & Year of Data
Access to exercise opportunities (% with adequate access to locations for physical activity)	86%	84%	84%	2023 County Health Rankings, 2020-2022
ALICE threshold (% of households at ALICE threshold)	27%	23%	29%	United Way ALICE Report, 2021
American Indian & Alaska Native	27%			
Asian	25%			
Black	31%			
Hispanic	49%			
White	30%			
Average meal cost in dollars (\$)	\$4.00	\$3.48	\$3.59	Feeding America, 2021
Child Care Centers (# of childcare centers per 1,000 population under 5 years old)	10	6	7	2023 County Health Rankings, 2010-2022
Childcare cost burden (% spent on childcare as a part of median household income)	32%	28%	27%	2023 County Health Rankings, 2021-2022
Children eligible for free lunch (% of public school kids)	37%	43%	53%	2023 County Health Rankings, 2020-2021
Children in poverty (% of people under age 18 living in poverty)	11%	14%	17%	2023 County Health Rankings, 2021
Asian	6%			
Black	40%			
Hispanic	13%			
White	5%			
Debt in collections (% of population with any debt in collections)	16%	20%	26%	Debt in America Map, 2022
Dentist ratio (population to dentists)	1020:1	1380:1	1380:1	2023 County Health Rankings, 2021

Definition of Identified Community Health Needs	La Crosse County	Wisconsin	United States	Source & Year of Data
Employed and working from home (%)	8.7%	10.1%		U.S. Census Bureau, 2022 ACS 5-year estimate
Food environment index (factors that contribute to a healthy food environment with 0 = worst and 10 = best)	8.7	8.8	7	2023 County Health Rankings, 2019-2020
Food insecurity rate	7.1%	7.2%	10.4%	Feeding America, 2021
Black	28%	25%		
Hispanic	18%	17%		
White	7%	5%		
High school completion (% of adults age 25+ with high school diploma or equivalent)	96%	93%	89%	2023 County Health Rankings, 2017-2021
Household Income (% of households with income below \$30,000 where head of household is 25-44 years old)	9.5%	12.5%	14.3%	U.S. Census Bureau, 2022 ACS 5-year estimate
Household Income (% of households with income below \$30,000 where head of household is 45-64 years old)	13.7%	14.0%	15.9%	U.S. Census Bureau, 2022 ACS 5-year estimate
Household Income (% of households with income below \$30,000 where head of household is 65+ years old)	28.8%	27.7%	28.1%	U.S. Census Bureau, 2022 ACS 5-year estimate
Household Income (% of households with income below \$30,000 where head of household is less than 25 years old)	47.0%	35.7%	37.3%	U.S. Census Bureau, 2022 ACS 5-year estimate
Households that own a home (% of occupied housing units that are owned)	62%	67%	65%	2023 County Health Rankings and Policy Map, 2017-2021
Households that own their home and do not have their own vehicle (%)	2.1%	2.2%		U.S. Census Bureau, 2022 ACS 5-year estimate
Households that rent their home and do not have their own vehicle (%)	15.0%	14.9%		U.S. Census Bureau, 2022 ACS 5-year estimate
Households with a lack of Internet (%)	8.6%	9.3%		U.S. Census Bureau, 2022 ACS 5-year estimate
Households with no computer access (%)	7.4%	7.1%		U.S. Census Bureau, 2022 ACS 5-year estimate
Households with no vehicle available (%)	7.0%	6.3%		U.S. Census Bureau, 2022 ACS 5-year estimate

Definition of Identified Community Health Needs	La Crosse County	Wisconsin	United States	Source & Year of Data
Limited access to healthy foods (% who are low-income and do not live close to a grocery store)	5%	5%	6%	2023 County Health Rankings, 2019
Literacy level (% of population at risk for facing difficulties using or comprehending print material)	12%	15%	22%	National Center for Education Statistics, 2013-2017
Mental health providers ratio (population to mental health providers)	280:1	420:1	340:1	2023 County Health Rankings, 2022
Mother that received WIC benefits while pregnant (%)	23.3%	24.3%	31.2%	CDC Wonder, 2019-2022
Other primary care providers ratio (population to other primary care providers)	400:1	720:1	810:1	2023 County Health Rankings, 2022
Population of adults without health insurance (%)	7%	8%	12%	2023 County Health Rankings and Policy Map, 2020
Population of children without health insurance (%)	3%	4%	5%	2023 County Health Rankings and Policy Map, 2020
Population without health insurance (%)	4.70%	5.40%	8.70%	U.S. Census Bureau, 2022 ACS 5-year estimate
Poverty Rate (% living below the poverty line)	11.8%	10.7%	12.6%	U.S. Census Bureau, 2022 ACS 1-year estimate
Preventable hospital stays for conditions that could have been treated in outpatient primary care setting (rate per 100,000 Medicare enrollees)	1928	2559	2809	2023 County Health Rankings, 2020
Primary care physician ratio (population to primary care physicians)	710:1	1240:1	1310:1	2023 County Health Rankings, 2020
School funding adequacy (spending above the estimated amount needed to achieve US average test scores)	\$5,173	\$2,260	\$1,062	2023 County Health Rankings, 2020
Social associations (# of membership associations per 10,000 population)	13.2	11.2	9.1	2023 County Health Rankings, 2020
Social Vulnerability Index (SVI score is 0-1.0, high score = more vulnerable)	0.52			CDC/ATSDR, 2020
Some college education (% of adults ages 25-44)	77%	70%	67%	2023 County Health Rankings, 2017-2021

Definition of Identified Community Health Needs	La Crosse County	Wisconsin	United States	Source & Year of Data
Transportation to work by walking or biking (%)	5.1%	3.3%		U.S. Census Bureau, 2022 ACS 5-year estimate
Transportation to work with own vehicle (%)	84.5%	84.4%		U.S. Census Bureau, 2022 ACS 5-year estimate
Transportation to work with public transportation (%)	0.8%	1.2%		U.S. Census Bureau, 2022 ACS 5-year estimate
Unemployed Rate (% of population ages 16 and older that are unemployed but seeking work)	2.5%	2.9%	3.6%	U.S. Bureau of Labor Statistics, 2022
Voter turnout for 2020 Presidential election (% of people age 18+ who voted)	72.4%	75.1%	67.9%	2023 County Health Rankings, 2020
Youth drug exposure (% who were offered, sold, or given drugs on school property in the past 12 months)	8%	10%		DPI YRBS survey, 2021
Youth food Insecurity (% who experienced hunger due to lack of food at home in the past 30 days)	21%			DPI YRBS survey, 2021
Youth school safety (% who feel safe at school most of the time or always)	83%			DPI YRBS survey, 2021
Youth who have lived in 4+ residences during their life (%)	33%			DPI YRBS survey, 2021
Youth with at least one supportive adult besides a parent (% with trusted adult)	84%	82%		DPI YRBS survey, 2021