

Hillview Campus Transformation



CURRENT STATE of the Hillview Campus

- Carroll Heights:** A four-story building offering 55 independent senior living apartments
- Hillview Terrace:** A two-story Residential Care Apartment Complex (RCAC) featuring 30 assisted living apartments that provide supportive services in a home-like setting.
- Hillview Nursing Home:** A skilled nursing facility with 40 beds located across the 600, 800, and 900 halls. This one-story building delivers comprehensive medical and rehabilitative care.
- The Oaks Nursing Home:** A specialized unit with 10 beds located in the 700 hall, certified exclusively by the State to meet specific needs for individuals with a diagnosis of dementia with challenging behaviors.

FUTURE STATE of the Hillview Campus (bold=new service)

CARROLL HEIGHTS:
HILLVIEW TERRACE:
HILLVIEW NURSING HOME:
THE OAKS:

- The Evergreens:** A 39-bed Community-Based Residential Facility (CBRF) located within the Hillview building, offering assisted living support. Four of these beds are designated for short-term stabilization of older adults experiencing dementia-related crises, providing a safe and responsive care environment.
- The Life Center:** An innovative Intergenerational Day Program that brings together the YWCA Childcare Center and the Aging & Disability Resource Center (ADRC) to support both children and older adults. Participants engage in enriching, structured activities led by University of Wisconsin–La Crosse Recreation Therapy students, fostering meaningful connections across generations.
- Park Lane Studios:** Ten studio apartments designed as supportive housing units, managed by La Crosse County Human Services. These apartments offer stable, service-connected living for individuals in need of additional support.

Why shrink the nursing home?

- **Shifting Preferences & Cost Efficiency:** Since 2017, we've intentionally reduced our census due to the growing popularity of more affordable, home-like alternatives in our community—such as assisted living facilities—which made it challenging to sustain a census of 199 in skilled nursing.
- **Closing the Service Gap:** We identified a gap in our continuum where customers had to relocate for services we didn't provide. To address this, we introduced *The Evergreens*, ensuring a more seamless care experience within our system.
- **Reducing Relocation Stress:** Transitions between care settings can be emotionally and physically taxing, especially for older adults. Expanding our continuum helps minimize the need for disruptive moves and supports smoother transitions.
- **Financial Sustainability:** Skilled nursing remains the most costly service to operate. By diversifying our offerings, we can preserve this critical component of care while ensuring long-term financial health—for both our organization and the individuals we serve.
- **Flexible, Needs-Based Care:** Our customers naturally move between services as their needs evolve. A broader continuum allows us to support them through every stage, without requiring them to leave our network.

Value of adding services?

Strategic Investment in Community Needs: County board members thoughtfully allocated ARPA funds to address pressing local needs. Given Hillview's available space and ideal location, services such as childcare, dementia/crisis support for older adults, and housing were prioritized for integration into the campus.

Innovative Intergenerational Programming: The Intergenerational Day Center introduces a one-of-a-kind model that fosters meaningful connections between youth and older adults—offering both social enrichment and hands-on learning opportunities for university students.

Supporting Workforce Stability: The Life Center provides a valuable resource for employees balancing caregiving responsibilities. La Crosse County staff receive priority access for their loved ones, helping attract and retain a dedicated workforce.

Educational Collaboration: Partnering with local colleges enhances structured programming at the Life Center. This collaboration benefits participants through engaging activities while offering students practical experience and community involvement.

Hillview: Before the Transformation

Photos taken prior to remodel

Reception area before





100 hall before



East hub area before



West hub before

Hub ceiling &
lights before



An empty room with white walls, a tiled floor, and a window. The room features decorative floral wallpaper at the top of the walls and two long, dark rectangular light fixtures mounted on the wall. There are several electrical outlets and switches on the wall, including a red fire alarm pull station. A door is visible on the right side of the frame. The text "Resident room before" is overlaid in the center of the image.

Resident room before



Tub room before

100 Day Room before

- 1000 Day Room before
- Current Hillview dining





- Dining Room before
- Future Childcare Center

- Sunshine room before
- Future Life Center for adults





OLD WINDOWS

CONSTRUCTION BEGINS



Future view of
The Evergreen's
serving kitchen

Therapy
Chapel
Beauty/Barber Shop
Dining Room
Activities
→

500



Transforming before our eyes

Future patio for The Evergreen's



Hillview Building Transforms

Photos taken during and near completion of the remodel

Refurbished wood
doors within
Hillview, The Oaks,
The Evergreens &
the Life Center.



Remodeled 900 HALL





A hand is visible on the left side of the frame, holding a white rectangular sign. The sign is the central focus and contains the text 'OPENING SOON' in a dark, serif font. The background behind the sign is dark and out of focus. On the right side, another hand is visible, holding the edge of the sign, and a portion of a blue checkered shirt is visible.

**OPENING
SOON**



Front Entrance to The Evergreen's

New Windows





Evergreen's Living Room



Evergreen's
serving
kitchen





Evergreen's ADA Resident bathroom





New Corridor flooring of The Evergreen's



Activity area
and door
leading to
Evergreen's
Patio

New public bathrooms





New Spa and Shower Room

PARK LANE STUDIOS

Supportive Housing



Common Kitchen/Dining Area



Outdoor enclosed patio

Laundry room



Common Living Room space



Individual Studio Apartments

LIFE CENTER

Intergeneration Services

YWCA Child Care

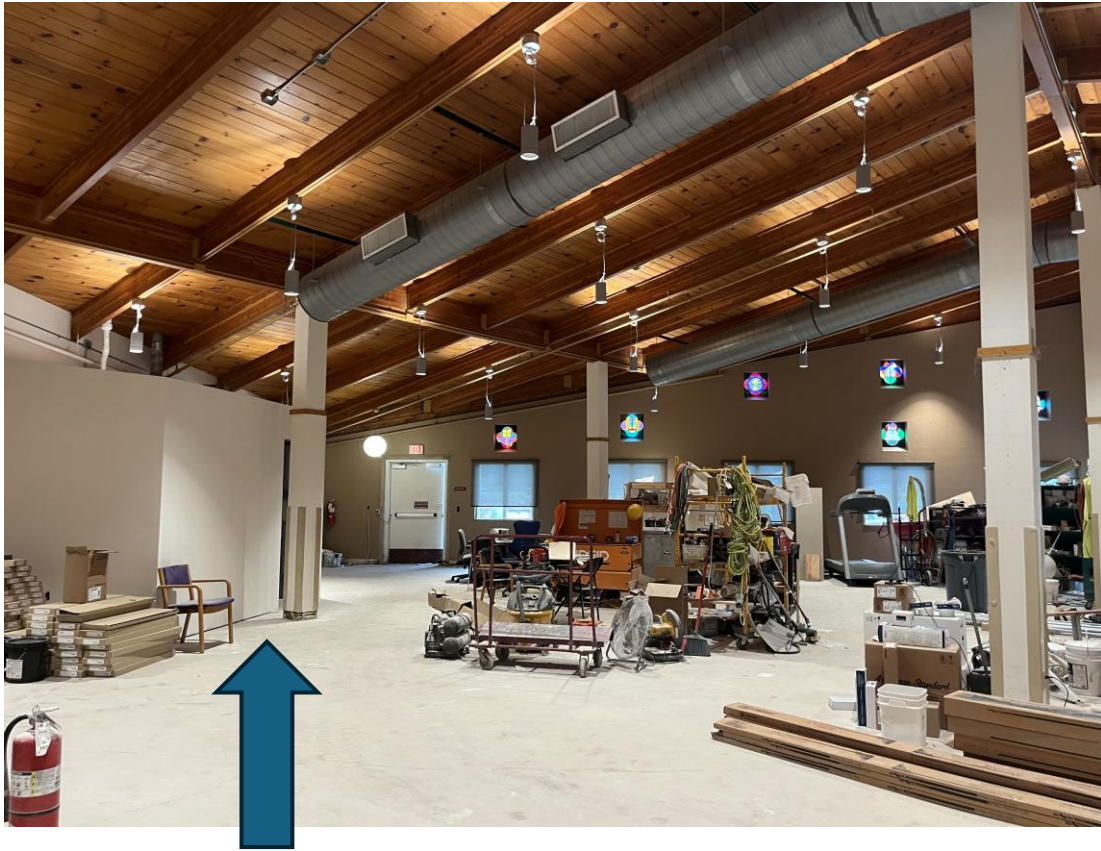
ADRC initially supports Adult Programming

UWL Recreation Therapy students provide structured activities



From corridor
between adults

YWCA Childcare Center



Toddler bathrooms



Life Center Entrance



Outdoor play area

Solar Panels

