

LA CROSSE COUNTY NOTICE OF MEETING

COMMITTEE OR BOARD:	PUBLIC WORKS AND INFRASTRUCTURE COMMITTEE	
DATE OF MEETING:	MONDAY, JUNE 6, 2022	
MEETING PLACE:	Administrative Center, County Board Room 1700 Click here to join the meeting	
TIME OF MEETING:	4:00 P.M.	
1.	Call to Order/Roll Call	
2.	Public Comment **Please see below on how to sign up for making public comment**	
3.	Approve PWI Minutes of May 9, 2022	
4.	Consent Agenda (Informational): <ul style="list-style-type: none"> a. Granular Activated Carbon (GAC) Filter Disposal Pilot Program b. Solid Waste Annual Meeting & Tour Update c. Dog Park Update d. Mindoro Park Update e. Preliminary Bypass Policy Discussion f. Village of Holmen MOU g. Flex Beam Discussion 	
5.	Conference/Meeting Report	
6.	Approval of RFP for a 3' x 130' Electric Powered Telescoping Conveyor	
7.	Approval of Bid for a 4WD Crew Cab Pickup Truck	
8.	Approval of RFP for two Woodchippers	
9.	Approval of Mead & Hunt's Design Contract for CTH U Safety Project	
10.	Approval of RFP for Chip Spreader	
11.	Approval of Bid for Crack Fill Material	
12.	Future Agenda Items	
13.	Adjourn	
NEWS MEDIA	DEPARTMENTS/STAFF	COMMITTEE MEMBERS
La Crosse Tribune	County Board Chair	Pam Viner, Chair
Other Media	County Administrator	Ralph Geary
OTHERS:	County Clerk	Steve Doyle
<u>Email:</u>	Facilities	Dan Hesse
Lanae Nickelotti		Matt Nikolay
Megan DeVore	<u>Email:</u>	Dennis Jacobsen
Jackie Eastwood	Jadd Stilwell	Jack Pogreba
Larry Hougom	Ryan Westpfahl	
Gary Hougom	Joe Langeberg	
Maureen Freedland	Keith Back	
	Mary Kaufmann	
	Bryan Jostad	

COMMITTEE MEMBERS: If unable to attend, call the County Clerk's Office at 785-9581.

****PUBLIC COMMENT:** Individuals may make a public comment in person or virtually. For individuals intending on making a virtual public comment, **please register at least 24-hours** in advance by emailing publiccomment@lacrossecounty.org or leave a message at 785-9700. Please include your name and email address you will be using to connect with the committee, along with the name of the committee you would like to provide a public comment.

The Committee may receive information from the public, but the Committee reserves the right to limit the time that the public may comment and the degree to which members of the public may participate in the meeting.

PERSONS WITH DISABILITIES: If you need accommodations to attend this meeting, please call the County Clerk's Office at 785-9581 ASAP.

DATE NOTICE FAXED/MAILED/POSTED: June 2, 2022

This meeting may be recorded, and any such recording is subject to Disclosure under the Wisconsin Open Records Law

PUBLIC WORKS AND INFRASTRUCTURE COMMITTEE
Monday, May 9, 2022
Room 1700, County Board Room
4:30 p.m.

MEMBERS PRESENT:	Chair Pam Viner, Dan Hesse, Ralph Geary, Dennis Jacobsen, Steve Doyle, Matt Nikolay, Jack Pogreba
MEMBERS EXCUSED:	None
MEMBERS ABSENT:	None

CALL TO ORDER: Chair Pam Viner called the meeting to order at 4:30 p.m.

PUBLIC COMMENT: NONE

APPROVE MINUTES OF APRIL 11, 2022

MOTION by Pogreba/Hesse to approve the minutes of the April 11, 2022, PWI Committee Meeting. **Motion carried unanimously.**

CONSENT AGENDA (INFORMATIONAL):

- a. Introduction of Departments that Report to the PWI Committee
- b. Introduction of Vice Chair. Chair Viner announced that the Vice Chair of the Public Works & Infrastructure Committee for the 2022 – 2024 term is Matt Nikolay
- c. Organizational Charts and Overview of Departments that Report to this Committee
- d. Reminder of the Landfill Tour Which Will be Held in June. Date to be Determined.

CONFERENCE/MEETING REPORT: NONE

ESTABLISH COMMITTEE MEETING TIME

There was committee discussion regarding the meeting time of this committee for the 2022-2024 term and it was decided that the Public Works & Infrastructure Committee will meet at either 4:00 or 4:30 p.m. depending on the extent of the agenda. **Motion** by Pogreba/Nikolay to approve. **Motion carried unanimously.**

AN ORDINANCE TO AMEND S 7.08 ENTITLED "ALL-TERRAIN VEHICLES" OF THE GENERAL CODE OF LA CROSSE COUNTY, WISCONSIN

The County Line Cruisers UTV Club has requested the County add the following County Roadways to the routes listed in the ordinance. CTH U from the Village of Bangor limits east to the Village of Rockland limits. CTH B from the Village of Bangor limits east to CTH J. The entire length of CTH JJ from STH 162 to CTH J. The Club is willing to pay the cost of the initial sign installation. The Towns of Bangor and Burns are in favor of opening those County Highways that are within their respective borders. Sheriff Wolf is not opposed to the addition. **MOTION** by Pogreba/Hesse to approve. **Motion carried unanimously.**

APPROVAL OF CONTRACT AMENDMENT WITH CBS^2

CBS^2 is currently under contract and is designing CTH M from CTH O to CTH I in the Town of Barre. This amendment is for \$29,851.69 for the design of a temporary structure to be included in the replacement of B7 due to the length of time this project will take. It is estimated to take up to 5 months. The Highway Commissioner recommends approval. Discussion ensued. **MOTION** by Doyle/Pogreba to approve. **Motion carried unanimously.**

APPROVAL OF ARYES'S CONTRACT AMENDMENT FOR THE CTH OT DESIGN PROJECT

The design change is to upgrade the design from a local LET to a STP-Urban design. This upgrade will allow the project to be submitted for 80% funding from the Wisconsin Department of Transportation. The design change cost was part of the Resolution to Amend the 2022 Highway Department Budget. The listed estimated cost in the resolution was

PUBLIC WORKS AND INFRASTRUCTURE COMMITTEE

Monday, May 9, 2022

Page Two

\$50,000. Aryes's amendment is for \$35,715.93. The Highway Commissioner recommends approval. **MOTION** by Pogreba/Doyle to approve. **Motion carried unanimously.**

APPROVAL OF S.E.H.'S CONTRACT AMENDMENT FOR THE CTH NN DESIGN PROJECT

The design change is to upgrade the design from a local LET to a STP-Local design. This upgrade will allow the project to be submitted for 80% funding from the Wisconsin Department of Transportation. The design change cost was part of the Resolution to Amend the 2022 Highway Department Budget. The listed estimated cost in the resolution was \$60,000. S.E.H.'s amendment is for \$98,100. The Highway Commissioner recommends approval. **MOTION** by Pogreba/Geary to approve. **Motion carried unanimously.**

NEXT COMMITTEE MEETING: June 6, 2022

FUTURE AGENDA ITEMS: Discuss placement of guardrails along county highways

ADJOURNMENT: MOTION by Pogreba/Nikolay to adjourn. **Motion carried unanimously.**

The meeting adjourned at 5:10 p.m.

Disclaimer: The above minutes may be approved, amended, or corrected at the next committee meeting. Carrie Kneifl, Recorder



LA CROSSE COUNTY
Exceptional services. Extraordinary place.

Solid Waste Department

GAC (granular activated carbon) Filter Disposal Pilot Program

Background

Per- and polyfluoroalkyl substances, or PFAS, are a large group of man-made chemicals that have been used in many industrial processes and consumer products since they were developed in the 1950s. There is evidence that exposure to higher levels PFAS can lead to adverse human health effects.

In 2019, the state Department of Natural Resources ordered the City of La Crosse to investigate PFAS contamination previously found in two city-owned wells on French Island. Officials believe the chemicals came from the use of fire fighting foam at and around the airport. In October, the city notified around 120 French Island households that they could be affected by the contamination and offered to test their private wells. When many of those tests started coming back with some level of PFAS, residents started doing their own well testing and so did the DNR. So far, 533 private wells have been tested on the island and all but 12 had traces of PFAS. Thirty-one percent, or 164 wells, had PFAS levels deemed unsafe for drinking water by the state Department of Health Services. The widespread contamination led DHS to declare an emergency water advisory for the area in March. Now, the state and the City of La Crosse are providing residents with bottled water.

Residents are looking for more permanent solutions and some have installed water filtration devices at their homes. NSF standards certify that a filter can reduce levels of two well-studied PFAS compounds, PFOA and PFOS, to below the Environmental Protection Agency's health advisory level of 70 parts per trillion for combined PFOA and PFOS. However, studies have shown that NSF certified devices can remove a wide range of PFAS (not just PFOA and PFOS) to levels well below Wisconsin's recommended groundwater standards; these levels are very low and sometimes undetectable.

Current

The La Crosse County Solid Waste Department was contacted by Margaret Larson in April of 2022 requesting guidance on the disposal of water filters used with the intention of removing PFAS. Most commonly, Granular activated carbon (GAC filters). In a GAC filter, water runs through small piece of carbon that act like magnets. PFAS and other organic chemicals stick to the carbon as water passes through. Sizes vary from small-sized pitcher filters, refrigerator, and faucet-mounted filters to large whole-house treatment systems. They are typically separated into two categories:

- Point-of-use (POU) devices treat water from a single outlet, faucet, or fixture. Examples include pitcher, faucet-mounted, and refrigerator filters. Residents are responsible for maintenance and disposal.
- Point-of-entry (POE) systems, treat all the water entering a house or a building. They are installed along the main water line that connects to a private well or municipal water supply. The company that installed the system usually handles maintenance and disposal of the filters.

Committee and Board members were interested in what disposal options exist on a residential level. Under current regulatory guidance, these filters can be landfilled. The EPA Strategic Roadmap is interim storage for 2-5 years. However, this does not truly remove the material from the community, only sequesters it. In order to provide a higher level of support for those impacted in Town of Campbell, La Crosse County is recommending a pilot program in which GAC Filter used for the removal of PFAS would be disposed in a more robust manner.

Pilot Program Basis

After meetings with members of the Wisconsin Department of Natural Resources, Xcel Energy French Island Facility, County Board Supervisor for French Island and La Crosse County Representatives, the Solid Waste Department is recommending a cooperative agreement between the La Crosse County Household Hazardous Materials Facility and the Town of Campbell to test management of a remote drop off location for residential use GAC Filters.

The Wisconsin Department of Natural of Rescouces has stated that a drop off site could be managed at the Town of Campbell recycling site and could be considered a transfer facility that is exempt from licensing and other NR 502 requirements if they meet the exemption criteria in NR 507.07(2).

NR 502.07(2)(2) Exemptions. Transfer facilities at which waste from individual users or from hand unloaded vehicles not exceeding one ton in capacity shall comply with the performance standards and closure requirements in s. NR 502.04 (1) and (3) (a) and (b), but are exempt from

all other requirements of this chapter, provided the facility is operated and maintained in conformance with the following practices:

- (a) Containers shall be leak-proof and manufactured of nondegradable material such as metal, plastic or concrete.
- (b) Where mechanical equipment is a part of the operation, access shall be limited to those times that an attendant is on duty. Access restrictions and an attendant may be required by the department for a nonmechanical facility.
- (c) Containers shall be removed or emptied at least once per week and more frequently if conditions warrant.
- (d) The transfer station and adjacent area shall be kept clean and free of litter.
- (e) Burning of solid waste may not be conducted.
- (f) Effective means shall be provided to control flies, rodents and other insects or vermin.
- (g) An all-weather access road and parking area shall be provided and maintained.
- (h) If recycling facilities are provided, they shall be clearly labeled and maintained in a nuisance-free manner.

For a program to be successful it must meet the following goals:

- Provide education to users so that they can understand and utilize the program
- Be easily accessible to those most in need of the service
- Does not place an over-burdensome cost on users or Municipality

During the pilot program the La Crosse County Household Hazardous Materials program would support and work with the town of Campbell to provide a test collection program.

Town of Campbell Responsibilities:

1. Provide education to residents about the program
2. Provide a physical location for the drum
3. Provide staffing for the drop off location during normal hours of operation
4. Drop-off collected materials at HHM

La Crosse County Household Hazardous Materials Facility Responsibilities:

1. Provide 55-gallon drums with removable lids
2. Support education program with Town of Campbell
3. Cover disposal fees of the drums at one of the following locations:
 - a. Subtitle C Landfill (no additional information would be needed, can accept):
Chemical Waste Management -Arlington, Oregon at a rate of \$375/55 Gallon Drum + ~ 15% fees
 - b. Licensed Hazardous Waste Incineration would take place at: (both incinerators would require additional information before final acceptance). Port Arthur, Texas - at a rate of \$675/55 Gallon Drum + ~ 15% fees or Kimball, Nebraska - at a rate of \$280/55 Gallon Drum + ~ 50% fees
4. Additionally – filter disposal will be available for all La Crosse County residents at the HHM facility.

Summary

At the end of a six-month trial period, La Crosse County will provide a summary report of its findings as to the rate of use and total costs of operating the pilot program.



#4b



LA CROSSE COUNTY

Exceptional services. Extraordinary place.

Solid Waste Department



The La Crosse County Disposal System 33rd Annual Meeting

INVITATION - Wednesday June 15, 2022

Meeting Location

Stoney Creek Conference Center
3060 So. Kinney Coulee Rd.
Onalaska, WI
Salon C



LA CROSSE COUNTY

Exceptional services. Extraordinary place.

Agenda

- 8:30 am – 9:15 am** Registration/Continental Breakfast
- 9:15 am – 9:30 am** Introductions/Announcements
- 9:30 am – 10:15 am** La Crosse Disposal System Year in Review
Jadd Stilwell, Director
La Crosse County Solid Waste Department
- 10:15 am – 10:30 am** Break/Refreshment
- 10:30 am – 11:00 am** Xcel Energy Annual Meeting Update on Resource Recovery
Tina Ball, Environmental Analyst
Xcel Energy
- 11:00 am – 12:00 pm** Roundtable Discussion and Questions
- 12:30 pm or 4:30 pm** Landfill Tours (approximately 1 hour each)
- 2:30 pm** Xcel Energy Tour (approximately 1 hour)

RSVP/Questions please call/email Gina Ingalls at 608-789-7857
gingalls@lacrossecounty.org



LA CROSSE COUNTY

Joseph Langeberg, PE
Highway Commissioner

Keith Back
Assistant Commissioner

Jay Anderson
Highway Engineer

Highway Department
301 Carlson Road ~ West Salem, Wisconsin 54669-9332
(608) 786-3810 Fax (608) 786-3816
www.lacrossecounty.org

Leif Nelson
Patrol Superintendent

Tim Hammes
Patrol Superintendent

Catherine Tschumper
Shop Superintendent

INTEROFFICE MEMORANDUM

TO: PUBLIC WORKS AND INFRASTRUCTURE COMMITTEE

FROM: JOE LANGEBERG

SUBJECT: JUNE 2022 MEETING EXPLANATION

DATE: 6/02/22

CC: JANE KLEKAMP, STEVE O'MALLEY, FILE

- Approval of RFP for 36" x 130' Electric Powered Telescoping Conveyor. Our existing conveyor was constructed in 1990 and is only 90 feet long. It limits height at which we can place material. With the increased length we will be able to place more material in our new Saint Joe's and our West Salem salt sheds. The conveyor was identified in the 2022 Equipment Budget. We received 2 bids for the conveyor. The top ranked bid is \$307,800, from US Equipement. I recommend for approval.
- Approval of Bid for pickup truck. We need a new pickup for one of our Superintendent's. The truck was identified in the 2022 Equipment Budget. We received 2 bids for a 4WD crew cab pickup truck. The low bid is was sold before we could get approval, so we will be going with the second bid of \$48,305.50, from Pischke Motors GMC. I recommend for approval.
- Approval of RFP for two wood chippers – We need 2 new wood chippers to replace our existing 1998 & 2006 wood chippers. The chippers are identified in the 2022 Equipment Budget. We received 2 bids for two single axle chippers. The top ranked bid is \$218,556, from Vermeer out of West Salem. I recommend for approval.

- Approval of Mead and Hunt's design contract for CTH U safety project. The roadway project is being funded for design and construction thru the WisDOT Highway Safety Improvement Program (HSIP) at 90% - 10% cost share. Total design cost is \$102,047.19 with the County portion being estimated at \$10,205. I recommend for approval.
- Approval of RFP for Chip Spreader. Our existing Chip Spreader was purchased in 2001 and is increasingly needing maintenance. We typically chip seal roadways starting around age 5 years. This and crack sealing extends the life of the roadway. In 2022 we will chip seal around 34 miles of roadways. About 13 of those miles will be for local municipalities. The Spreader was identified in the 2022 Equipment Budget. We received 2 bids for the Chip Spreader. The ranked top bid is \$402,800, from Aring out of Milwaukee. I recommend for approval.
- Approval of Bid for Crack Fill Material – We need approximately 46,500 pounds of crack fill material to complete roadway crack filling projects on the County roadway system. We received 5 bids for crack fill material. The low bid does not meet the bid specs and will not be considered. The second lowest bid is \$0.675 per lb, from Midstates Equipment & Supply. I recommend the second bid for approval.

Thank you for your time and continued support for Highway Department operations.

526 Temporary Structures

526.1 Description

- (1) This section describes the design, construction, maintenance, and removal of a temporary structure of the necessary waterway area and of the width specified in a required Temporary Structure contract special provision.

526.2 Materials

- (1) Furnish materials conforming to 500. The contractor may incorporate used materials in the structure if they are sound and suitable for the purpose intended.

526.3 Construction

526.3.1 Permits and Coordination

- (1) Obtain necessary permits as specified in [107.3](#) and coordinate with the issuing agency in securing the permits and complying with permit terms.

526.3.2 Design

- (1) Provide plans, signed and sealed by a professional engineer registered in the state of Wisconsin, for temporary structures. Submit one copy of plans to place on file. If the engineer requests, submit 2 extra copies of plans for review before ordering materials or starting construction.
- (2) Ensure that the temporary structure spans the stream and has dimensions sufficient to not constrict stream flow. Show the minimum bridge length between faces of abutment support on the temporary structure plans. Ensure that the structure has a low superstructure elevation and an open waterway area no less than the contract plans specify. Also ensure that the structure has a roadway width no less than the special provisions specify as measured between the faces of the railings or curbs, and at right angles to the centerline. Provide vertical abutments designed to prevent spilling fill material into the stream. If building a temporary crossing over a stream or lake subject to boating use, construct it to provide horizontal and vertical clearance, as the jurisdictional agency may require, adequate for row boats and small power boats.
- (3) Design, construct, and maintain temporary structures conforming to AASHTO LRFD Bridge Construction Specifications, Article 3.5. Design rail and posts according to the WisDOT Bridge Manual, chapter 30.

526.3.3 Temporary Structures

- (1) Construct temporary structures conforming to 500. Backfill conforming to [206.3.13](#) with structure backfill conforming to [210.2](#).
- (2) Inspect temporary structures conforming to the National Bridge Inspection Standards and the department's structure inspection manual before opening to traffic. Perform additional inspections, as the department's structure inspection manual requires, based on structure type and time in service. Submit inspection reports on department form [DT2007](#) to the engineer and electronic copies to the BOS maintenance section. Ensure that a department-certified active team leader, listed online in the department's highway structures information system, performs the inspections.
- (3) Maintain temporary structures and approaches in place until no longer needed. Unless the engineer directs otherwise, completely remove and dispose of as specified in [203.3.4](#). Contractor-furnished materials remain the contractor's property upon removal.

526.4 Measurement

- (1) The department will measure the Temporary Structure bid items as a single lump sum for each structure acceptably completed.

526.5 Define two-stage payment for temporary structures.

526.5 Payment

- (1) The department will pay for measured quantities at the contract unit price under the following bid items:

<u>ITEM NUMBER</u>	<u>DESCRIPTION</u>	<u>UNIT</u>
526.0100	Temporary Structure (station)	LS

- (2) Payment for the Temporary Structure bid items is full compensation for providing a temporary structure including design and construction; for backfilling with structure backfill; for maintaining; and for removing when no longer needed. **The department will pay 70 percent of the contract amount when open to traffic and the balance after structure removal and associated site restoration.**

Bypass bridge Discussion

Locally other County's that only construct a bypass bridge on Dead End Roads

- Vernon
- Richland
- Trempealeau
- Monroe

Costs associated with Bypass Bridges.

- Time - 1 to 1.5 months added to construction time
- Environmental
 - Larger construction footprint +/- 0.5 acres
 - Typically, wetland disturbance
 - Carbon output increased – construction and removal of bypass
- Private property Temporary Limited Easement (TLE)
 - Typically, +/- 0.5 acres of land needed to construct temp road and bridge
 - Easement costs range from \$2000 to \$25,000 per 0.5 acres (2021 numbers)
- Affect to Draft 2023 Capital Improvement Plan for 2023-2027
 - Currently there are 9 bridges listed for construction
 - Total estimated Cost \$9,200,000
 - Federal estimated share \$6,700,000
 - County estimated cost \$2,200,000
 - 2 are local bridges on dead end roads with a 10% County Cost
 - County estimated cost \$240,000
 - 2 now have bypasses included
 - B320004, the large La Crosse River Bridge, by the fair Ground cannot have a bypass
 - Over 40 feet high
 - Around 2 mile local detour
 - The estimated cost increase, to construct a bypass bridge and road, is \$250,000 per bridge
 - The cost increase to add temporary bypass bridges to the remaining 4 structures is estimated at \$1,000,000 in 2022 dollars
 - Cost range to the County is from 20% to 100%
 - Or potentially two less structures constructed

**Memorandum of Understanding
Between La Crosse County, Village of Holmen,
Town of Holland and Holmen School District**

THIS MEMORANDUM OF UNDERSTANDING, is made as of this ____ day of June, 2022, by and between La Crosse County (“County”), the Village of Holmen (“Village”), the Town of Holland (“Town”) and the Holmen School District (“HSD”). The County, Village, Town and HSD sometimes are referred to herein individually as a “Party” and collectively as the “Parties”.

RECITALS

WHEREAS, all of the parties have a vested interest in the intersection of Briggs Road and McHugh Road; and

WHEREAS, the parties all agree that it is in the best interest of the parties and the community as a whole to construct a Roundabout at the intersection of Briggs Road and McHugh Road; and

WHEREAS, the parties all desire to partner together to construct a Roundabout with the Village, Town and HSD sharing the cost of construction of the Roundabout and the County continuing to own and maintain the intersection and Roundabout upon its completion.

NOW, THEREFORE, in consideration of the covenants and agreements hereinafter set forth and for other good and valuable consideration, the receipt and sufficiency of which is hereby acknowledged, the Parties mutually agree as follows:

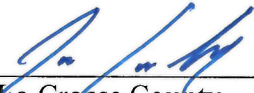
- I) Acknowledgements.** The Parties acknowledge and affirm each of the following statements:
- A) The County will permit the Village, Town and HSD to design and construct a Roundabout at the intersection of Briggs Road and McHugh Road that is designed and stamped by a Professional Engineer licensed in Wisconsin and that follows Standard Wisconsin Department of Transportation requirements and no other stipulations.
 - B) The County will continue to own the intersection of Briggs Road and McHugh Road upon completion of the Roundabout and will continue to maintain said intersection and Roundabout upon its completion.
 - C) The parties estimate that the total cost of the project including the study, engineering, design, construction and construction oversight to be approximately One Million Four Hundred Twenty Thousand and no/100ths Dollars (\$1,420,000.).

- D) The Village will create a special one-time project account to hold the funds from the Village, Town and HSD which will be used to fund the project from start to finish. The Village will provide monthly financial reports and the account balance to the Town and HSD. This fund will be used to pay all of the expenses related to the Roundabout construction including but not limited to: engineering, permitting, storm water, new electric lighting, road construction, road materials, traffic control, utility (electric, gas, phone, etc.) impacts, landscaping and establishment, painting and signage, all of which is done with the intent of designing and constructing a safe and appropriate intersection at the corner of Briggs Road and McHugh Road and the roadway servicing the area into and around Holmen High School.
- E) The Village, Town and HSD will fund the project with an initial deposit into the special one-time project account identified in section (D) above on or before August 1, 2022 in the following amounts: Village 25% or \$355,000, Town 25% or \$355,000 and HSD 50% or \$710,000.
- F) As funds are disbursed through the project they will be allocated to the Village, Town and HSD in the same percentages identified in section (E) above. In the event there are any funds remaining upon completion of the project, they will be reimbursed to the Village, Town and HSD in the same proportions identified in section (E) above.
- G) The Village will provide all in-kind services for legal, engineering and administration for complete project oversight from start to finish. This equates to approximately \$50,000 of in-kind project support and leadership for this project.
- H) While the goal and expectation of the parties is that the total expenditures of this project will stay under or within the \$1,420,000 project budget, in the event that project costs exceed the budgeted amounts, the Town and Village agree that they will absorb any expense over the budgeted amount equally and separate from the HSD as the HSD will have already expended all of its available resources for this project.
- I) In the event the Village Water or Sewer Utilities require any work within the project area, the Village will be 100% responsible for any costs associated with any work related to the Village Water or Sewer Utilities.
- J) The parties' goal is to complete construction of this project during the Summer of 2023. It is expected and understood that road closures will occur on Briggs Road and McHugh Road during the construction of this project and the parties agree to support and accommodate any temporary detours that are necessary during this construction.

IN WITNESS WHEREOF, the parties have caused this Memorandum of Understanding to be executed by their duly authorized officers as of the day and date first above written.

Date: 5-31-22

Date: _____



La Crosse County
by Joe Langeberg
La Crosse County Highway Commissioner

Village of Holmen
by Patrick Barlow
Village of Holmen President

Date: _____

Date: _____

Town of Holland
by Bob Stupi
Town of Holland Chair

School District of Holmen
by Dr. Kristin Mueller
Holmen School District Administrator

Village of Holmen MOU

CTH MH and Briggs Road intersection upgrade discussions have going on for several years. The intersection is the only entrance and exit for the Holmen High School students.

On May 5th, the Village of Holmen, Holmen School District, Town of Holland and La Crosse County met to discuss a partnership to upgrade the intersection. Attendees from the County were Monica Kruse, Steve O'Malley, and myself.

The result of the meeting is the Memorandum of Understanding included in your packet. The Village of Holmen will hire a consultant engineering firm to design a roundabout at the intersection and they will LET a construction contract. The design and construction is estimated to cost \$1,420,00. The funding will be split between Village, paying 25% (\$355,000), Town paying 25% (\$355,000), and the School District, paying 50% (\$710,000).

The project is initially planned for 2023 construction. They will schedule the construction for the summer months.

Flex Beam Discussion

I have included in your packet three documents that provide flex beam location and installation requirements.

Typical Flex Beam Location Requirements:

- Average Daily Traffic (ADT) over 400
- History of run off accidents
- Slope 3:1 or greater
- Shielding roadside hazards
- Bridge approaches

Typical installation requirements:

- At least 2 feet from fog line
- On public right of way or permanent limited easement
- Preferable 2 feet from the shoulder hinge point
- At least 28 inches high

These requirements are from the Wisconsin Department of Transportation Facilities Development Manual

Current Flex Beam Cost as of March 2022

- Crash End - \$2,870
- \$38 per foot

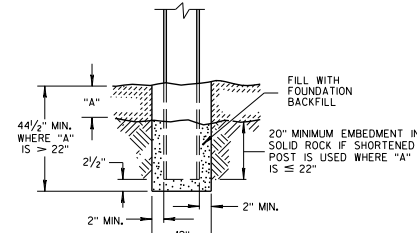


SDD 14B15-a Steel Plate Beam Guard, Class "A", Installation and Elements

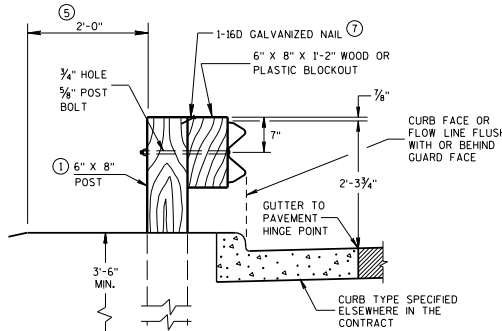
#4g-1

GENERAL NOTES

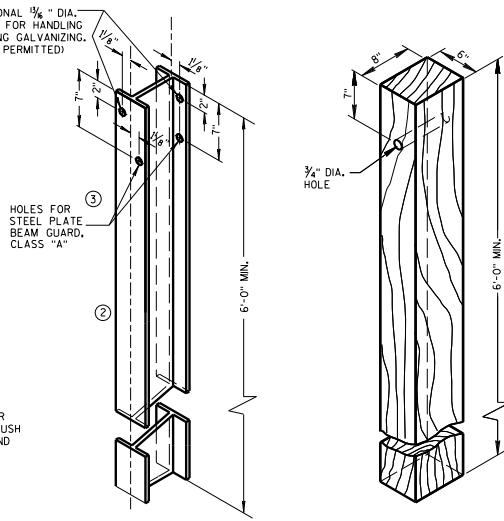
- W6 X 9 OR W6 X 8.5 STEEL POSTS AND NOTCHED PLASTIC BLOCKOUTS ARE ACCEPTABLE ALTERNATIVES FOR 6" X 8" WOOD POSTS WITH WOOD OR PLASTIC BLOCKOUTS. USE APPROVED NOTCHED PLASTIC BLOCKOUTS WITH STEEL POSTS. APPROVED PLASTIC BLOCKOUT DESIGNS MAY VARY FROM THIS TYPICAL DETAIL WHEN USED IN CONJUNCTION WITH STEEL POSTS. DO NOT MIX STEEL POSTS AND WOOD POSTS IN A SINGLE INSTALLATION.
 - USE STRUCTURAL STEEL POSTS CONFORMING TO ASTM A 36. GALVANIZED POSTS ACCORDING TO AASHTO M 113 EITHER SET THE POSTS IN DRILLED HOLES OR DRIVE TO GRADE, REMOVE MUSHROOMING CAUSED BY DRIVING AND REPAIR DAMAGED SPECTER COATING ON GALVANIZED POSTS.
 - INSTALL STEEL POSTS WITH HOLES ON APPROACHING TRAFFIC SIDE.
 - USE EITHER WOOD OR APPROVED PLASTIC BLOCKOUTS ON WOOD POSTS.
 - IF THE DISTANCE FROM BACK OF POST TO SHOULDER HINGE POINT IS LESS THAN 2 FEET INSTALL LONGER POST AT HALF POST SPACING, W BEAM (LHW).
 - IF ROCK IS ENCOUNTERED DURING EXCAVATION, THE ENGINEER MAY APPROVE USING A 12 INCH DIAMETER POST HOLE EXTENDING 20 INCHES DEEP INTO THE ROCK. PLACE GRANULAR MATERIAL IN THE BOTTOM OF THE HOLE APPROXIMATELY 2 1/2 INCHES DEEP. CUT THE POSTS TO LENGTH AND PLACE IN THE HOLE. BACKFILL WITH MATERIAL EXCAVATED FROM THE HOLE AND COMPACT ADEQUATELY.
 - WHEN USING STEEL POSTS AND WOOD BLOCKOUTS INSTALL FOUR #16 GALVANIZED NAILS. INSTALL NAILS AT THE BACK CORNERS OF THE BLOCK AND BEND THE NAILS OVER THE FLANGE OF THE STEEL POST.
- INSTALL BEAM GUARD SECTIONS AND ALL ACCESSORIES THEREON ACCORDING TO THE APPLICABLE DESIGN AND CURRENT STANDARD AND SUPPLEMENTAL SPECIFICATIONS. ALL DIMENSIONS ARE SUBJECT TO MANUFACTURER'S TOLERANCES EXCEPT WHERE ALLOWABLE TOLERANCES ARE SHOWN.



END VIEW SETTING STEEL OR WOOD POST IN ROCK

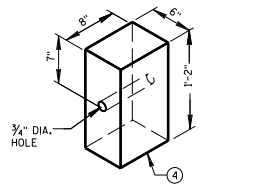


END VIEW LOCATED ALONG A CURBED ROADWAY

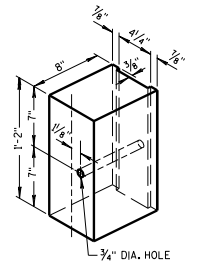


STEEL POST & HOLE PUNCHING DETAIL (W6 X 9)

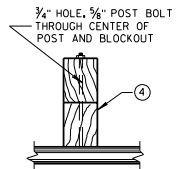
WOOD POST (6" X 8") NOMINAL



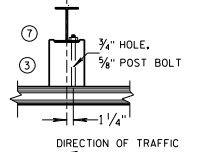
WOOD OR PLASTIC BLOCKOUT FOR WOOD POSTS



TYPICAL NOTCHED PLASTIC BLOCKOUT FOR STEEL POSTS



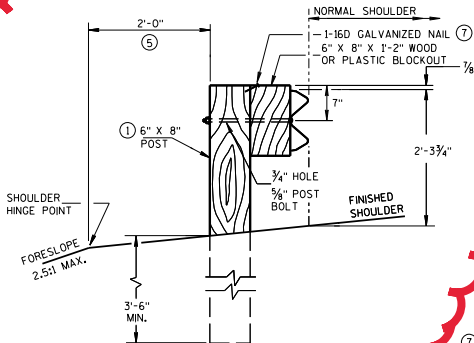
PLAN VIEW WOOD POST, BLOCKOUT & BEAM



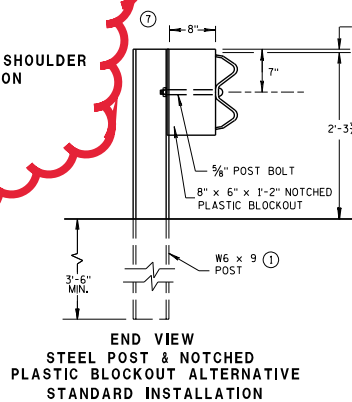
PLAN VIEW STEEL POST, NOTCHED PLASTIC BLOCKOUT & BEAM

STEEL PLATE BEAM GUARD, CLASS "A" INSTALLATION & ELEMENTS

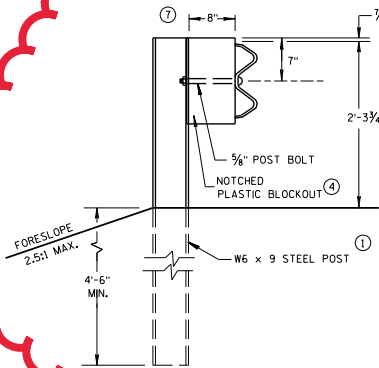
STATE OF WISCONSIN DEPARTMENT OF TRANSPORTATION



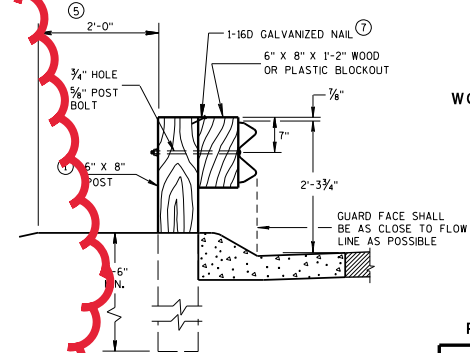
END VIEW LOCATED ALONG A ROADWAY SHOULDER STANDARD INSTALLATION



END VIEW STEEL POST & NOTCHED PLASTIC BLOCKOUT ALTERNATIVE STANDARD INSTALLATION

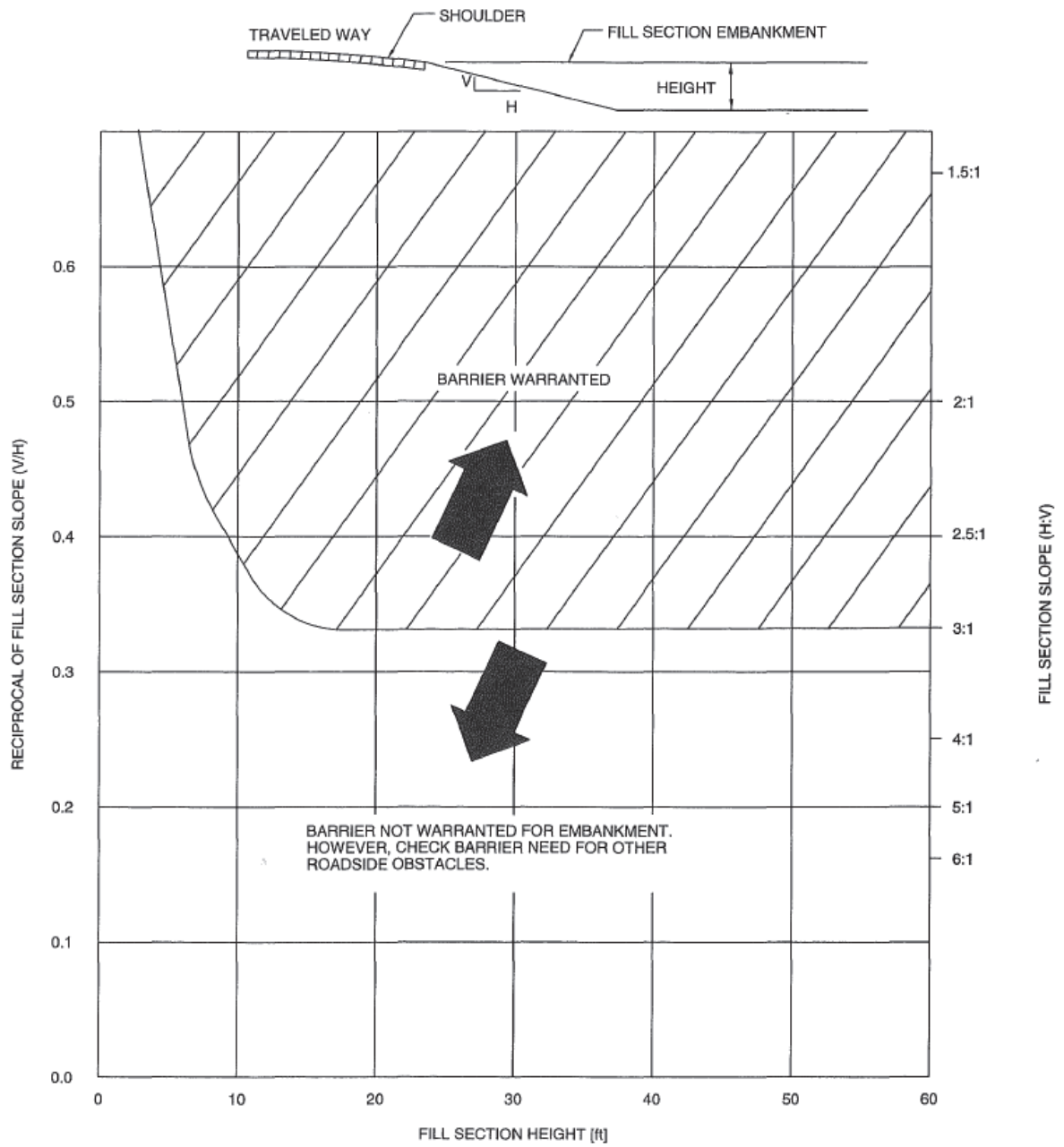


END VIEW LONGER POST AT HALF POST SPACING W BEAM (LHW)



END VIEW LOCATED ALONG A MOUNTABLE CURBED ROADWAY

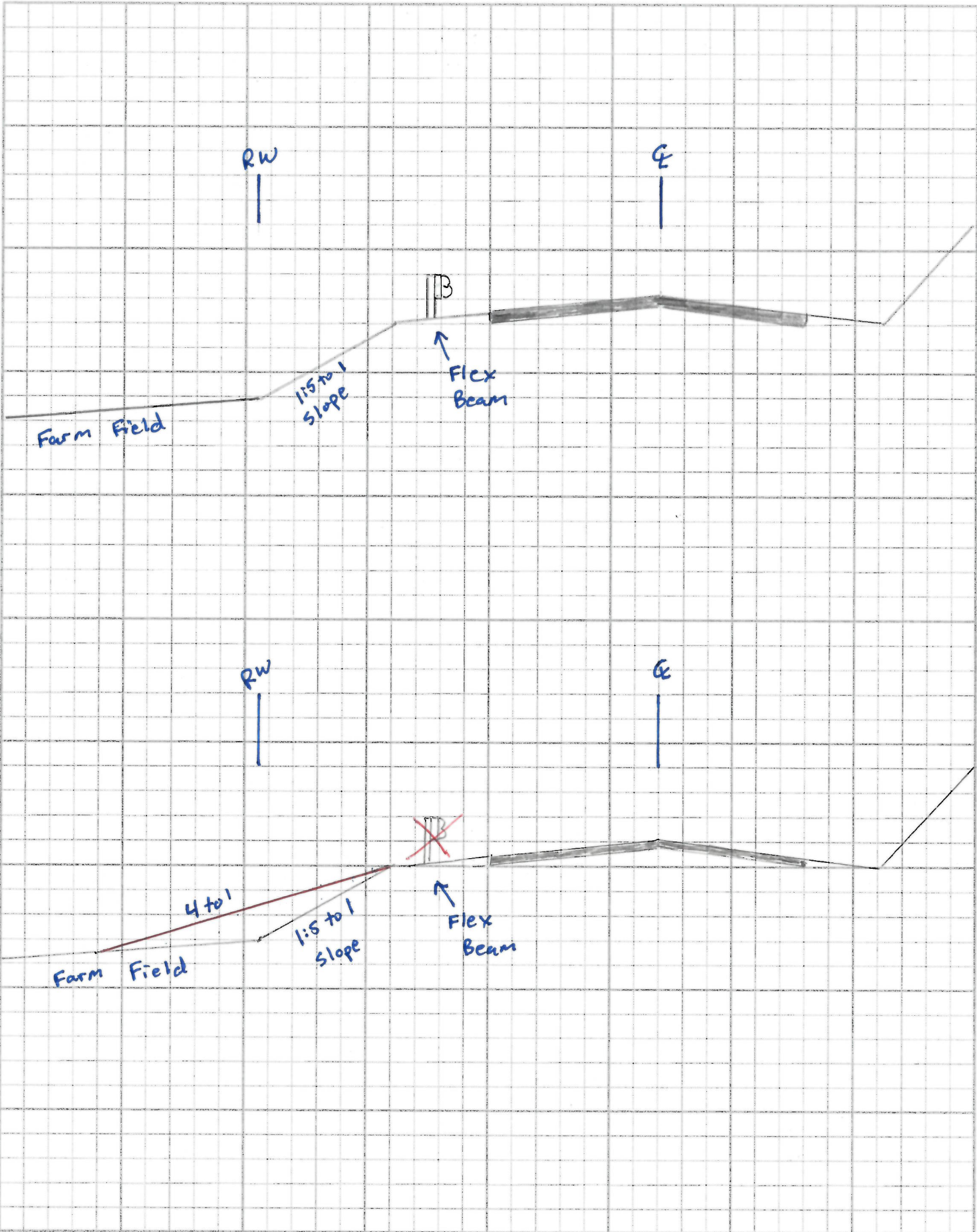
TYPICAL INSTALLATION OF STEEL PLATE BEAM GUARD



From AASHTO Roadside Design Guide Copyright 2011, by the American Association of State Highway and Transportation Officials, Washington, DC. Used by permission. Documents may be purchased from the AASHTO bookstore at 1-800-231-3475 or online at <http://bookstore.transportation.org>.

La Crosse County Highway Department

TITLE	Typical hill section	
NAME	JJL	DATE 5-12-22



Recommendation for ApprovalStanding Committee: Public Works and InfrastructureDepartment: Highway DepartmentSubject: Purchase of one (1) conveyor**Background information:**

The purpose of this procurement process is to purchase of one (1) conveyor to replace unit 611 a year 1990 conveyor purchased in year 2004. The replaced unit will be taken out of service and placed for sale on the Wisconsin Public Service Auction website. Th conveyor will be used for filling salt shed sheds with winter granular material.

Evaluation information:

The RFP was placed on the County RFP webpage and a legal notice was advertised in the La Crosse Tribune. The RFP was sent directly to area dealers and placed on the DemandStar website. The Highway Department received three (3) proposals. An evaluation team consisting of the Highway Commissioner, Assistant Highway Commissioner, Highway Shop Superintendent, and the Purchasing Manager reviewed the proposals. The proposals were evaluated on the following criteria:

Specifications	30 points
Cost	50 points
<u>Warranty</u>	<u>20 points</u>
Total	100 points
*Vendor History	0 to -15

*This RFP is crucial to an important public service performed by the La Crosse County Highway Department. As part of this evaluation, a vendor may have up to 15 points subtracted based on the vendor's past historical integrity with regards to providing required equipment specifications and supporting the performance of equipment.

Vendor	Evaluation Score	Cost
US Equipment McCloskey SDX130	100	\$307,800.00
Arining Thor LPT 130 X 36	94	\$343,800.00
Aring Thor 150 X36	93	\$349,700.00

Primary strengths of recommended vendor:

1. Lowest Cost
2. Meets Specifications
3. In stock, immediately available.

Recommendation / Action Requested:

Based on the review of the proposals, the evaluation team recommends the purchase of one (1) conveyor from US Equipment.

Recommendation for ApprovalStanding Committee: Public Works and InfrastructureDepartment: Highway DepartmentSubject: Purchase of ½ ton crew cab 4x4 pick-up truck**Background information:**

The purpose of this procurement process is to purchase of one (1) pick-up truck to replace year 2011 truck with 250,000 miles. The replaced unit will be placed in the Highway Department general operations fleet. The purchased truck will used as a Patrol Superintendents Truck.

Evaluation information:

The RFP was placed on the County RFP webpage and a legal notice was advertised in the La Crosse Tribune. The RFP was sent directly to six (6) area dealers. The Highway Department received two (2) proposals. An evaluation team consisting of the Highway Commissioner, Assistant Highway Commissioner, Highway Shop Superintendent, and the Purchasing Manager reviewed the proposals. The proposals were evaluated on the following criteria:

Specifications	20 points
Cost	50 points
Warranty	20 points
<u>Past Service</u>	<u>10 points</u>
Total	100 points

Vendor	Evaluation Score	Cost
Pischke 2022 Ram 1500	100	\$48,350.50
Dahl GMC 2022 GMC 1500 *Highway Department was notified on June 1 st the proposed vehicle had been sold and is not available.	Not Available	\$37,804.50

Primary strengths of recommended vendor:

1. Meets Specifications
2. Vehicle availability

Recommendation / Action Requested:

Based on the review of the proposals, the evaluation team recommends the purchase of 2022 Ram 1500 from Pischke.

Recommendation for ApprovalStanding Committee: Public Works and InfrastructureDepartment: Highway DepartmentSubject: Purchase of two (2) single axle brush chippers**Background information:**

The purpose of this procurement process is to purchase of two (2) single axle brush chippers to replace unit 605, year 2006 and unit 608, year 1998. The replaced unit will be taken out of service and placed for sale on the Wisconsin Public Service Auction website. The brush chippers will be used general operations of highway maintenance.

Evaluation information:

The RFP was placed on the County RFP webpage and a legal notice was advertised in the La Crosse Tribune. The RFP was sent directly to area dealers and placed on the DemandStar website. The Highway Department received four (4) proposals. An evaluation team consisting of the Highway Commissioner, Assistant Highway Commissioner, Highway Shop Superintendent, and the Purchasing Manager reviewed the proposals. The proposals were evaluated on the following criteria:

Specifications	30 points
Cost	50 points
<u>Warranty</u>	<u>20 points</u>
Total	100 points
*Vendor History	0 to -15

*This RFP is crucial to an important public service performed by the La Crosse County Highway Department. As part of this evaluation, a vendor may have up to 15 points subtracted based on the vendor's past historical integrity with regards to providing required equipment specifications and supporting the performance of equipment.

Vendor	Evaluation Score	Cost
Vermeer BC 1800XL	98	\$218,556.00
LF George Morbark 1821	88	\$210,986.25
LF George Morbark 2131	85	\$222,270.36
Vermeer AX19	79	\$254,698.00

Primary strengths of recommended vendor:

1. Parts availability vendors
 - less than 5 minutes from Highway Shop
2. Repair Shop proximity
 - repair shop less than 5 minutes from Highway Shop
3. Standard Warranty
 - 5-year, 3,000-hour emission
 - 1-year bumper to bumper
 - 2-year, 2,000-hour engine
4. Meets specifications

Recommendation / Action Requested:

Based on the review of the proposals, the evaluation team recommends the purchase of two (2) single axle brush chippers from Vermeer.

THREE PARTY DESIGN ENGINEERING SERVICES CONTRACT SIGNATURE PAGES

ENGINEERING SERVICES CONTRACT

BETWEEN THE WISCONSIN DEPARTMENT OF TRANSPORTATION,

LA CROSSE COUNTY HIGHWAY DEPARTMENT (MUNICIPALITY)

AND MEAD & HUNT, INC. (CONSULTANT) FOR

Project ID 7076-01-02
 Bangor to Rockland
 Curve 0.3 mi W of Rockland V Limit
 CTH U, La Crosse County

This CONTRACT made and entered into by and between the DEPARTMENT ,MUNICIPALITY and the CONSULTANT provides for those SERVICES described in the Scope of Services and Special Provisions and is generally for the purpose of providing the SERVICES solicited by the MUNICIPALITY in February 2022 to provide engineering services for the reconstruction of CTH U curve 0.3 mi W of Rockland V Limit. This Qualification Based Selection was made based on the CONSULTANT'S Notice of Interest response and any interviews conducted.

The DEPARTMENT and MUNICIPALITY deem it advisable to engage the CONSULTANT to provide certain engineering SERVICES and has authority to contract for these SERVICES under sec. 84.01(13), Wis. Stats.

The DEPARTMENT REPRESENTATIVE is: Brandan Burger, PE; Local Program Project Manager; WisDOT Southwest Region Office, 2101 Wright Street, Madison WI , 53704; Brandan.Burger@dot.wi.gov; and (608) 267-4019.

The MUNICIPALITY REPRESENTATIVE is: Joe Langeberg; Commissioner; La Crosse County Highway Department, 301 Carlson Road, West Salem, WI 54669-9332; JLangeberg@lacrossecounty.org; and (608) 786-3813.

The CONSULTANT REPRESENTATIVE is: Jay Wheaton, PE; Project Manager; Mead & Hunt, Inc., 750 North 3rd Street, La Crosse WI 54601; jay.wheaton@meadhunt.com; and (608) 443-7048.

The CONSULTANT SERVICES will be performed for the DEPARTMENT's Southwest Region office located in Madison, WI and will be completed by February 1, 2025. Deliver PROJECT DOCUMENTS to WisDOT – Southwest Region Office, 2101 Wright Street, Madison WI, 53704, unless other directions are given by the DEPARTMENT.

Compensation for all SERVICES provided by the CONSULTANT under the terms of the CONTRACT will be from the:

DEPARTMENT MUNICIPALITY

The CONSULTANT will be compensated by the DEPARTMENT for services provided under this CONTRACT on the following basis:

- (a) For Roadway Plans, actual costs to the CONSULTANT up to \$79,072.75 plus a fixed fee of \$5,320.74 not to exceed \$84,393.49.
- (b) For archeological phase one investigation services subcontracted to MVAC, the CONSULTANT’S actual cost to MVAC not to exceed \$3,493.70 for units based on the rates in the table below.

Item	Description	Quantity	Unit	Unit Rate (\$)	Cost
1	Principal Investigator	24	HR	\$95.50	\$2,292.00
2	Field Crew	14	HR	\$55.95	\$783.30
3	GIS Specialist	2	HR	\$55.95	\$111.90
4	Business Manager	1	HR	\$95.50	\$95.50
5	Travel	1	LS	\$111.00	\$111.00
6	Curation	1	LS	\$100.00	\$100.00
TOTAL =					\$3493.70

- (c) For title searches subcontracted to Southwest Title, LLC, the CONSULTANT’S actual cost to Southwest Title, LLC not to exceed \$900.00 for units delivered based on rates in the table below.

Item	Description	Estimated Quantity	Unit	Unit Rate (\$)	Cost
1	Title Searches (3 Parcels)	3	EA	\$300.00	\$900.00
ESTIMATED TOTAL =					\$900.00

- (d) For right-of-way plats subcontracted to Walsh Geomatics, LLC, the CONSULTANT’S actual cost to Walsh Geomatics, LLC not to exceed \$7,340.00 for units delivered based on the rates in the table below.

Item	Description	Estimated Quantity	Unit	Unit Rate (\$)	Cost
1	Office time	24	HRS	\$95.00	\$2,280.00
2	Field time	44	HRS	\$115.00	\$5,060.00
ESTIMATED TOTAL =					\$7,340.00

- (e) For right-of-way acquisition subcontracted to Right of Way Professionals, Inc., the CONSULTANT’S actual cost to Right of Way Professionals, Inc not to exceed \$5,920.00 for units delivered based on the rates in the table below.

Item	Description	Estimated Quantity	Unit	Unit Rate (\$)	Cost
1	Sales Study	1	LS	\$3,000.00	\$3,000.00
2	Acquisition Services	2	EA	\$930.00	\$1,860.00
3	Utility Release of Rights	2	EA	\$530.00	\$1,060.00
ESTIMATED TOTAL =					\$5,920.00

Compensation for all SERVICES provided by the CONSULTANT under the terms of the CONTRACT shall be for an amount not to exceed \$102,047.19.

The CONSULTANT does and will comply with the laws and regulations relating to the profession of engineering and will provide the desired engineering SERVICES.

If the prime CONSULTANT is a certified Disadvantaged Business Enterprise, SERVICES performed by the CONSULTANT can be considered in meeting this requirement.

This CONTRACT incorporates and the parties agree to all of the standard provisions of the Three Party Design Engineering Services Contract, dated July 1, 2015 and referenced in Procedure 8-15-1 of the State of Wisconsin Department of Transportation Facilities Development Manual. CONSULTANT acknowledges receipt of a copy of these standard provisions.

This CONTRACT incorporates all of the MANUALS defined in the CONTRACT.

The parties also agree to all of the Special Provisions which are annexed and made a part of this CONTRACT, consisting of 11 pages.

Nothing in this CONTRACT accords any third part beneficiary rights whatsoever on any non-party that may be enforced by any non-party to this contract.

For the CONSULTANT

For the DEPARTMENT

By: _____

By: _____

Title: _____

Contract Manager, WisDOT

Date: _____

Date: _____

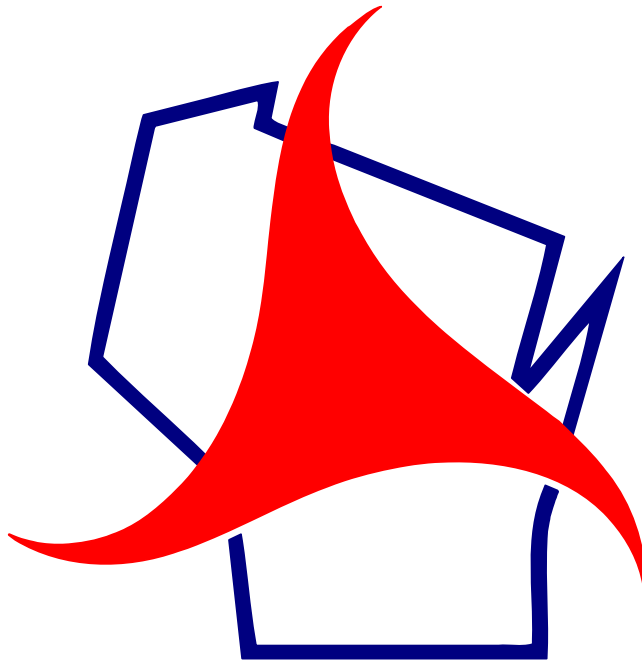
For the MUNICIPALITY

By: _____

Title: La Crosse County Highway Commissioner

Date: _____

Three-Party Design Contract Special Provisions
Project ID 7076-01-02
Bangor – Rockland
Curve 0.3 mi W of Rockland V Limit
CTH U, La Crosse County



May 12, 2022

- 1. SCOPE OF SERVICES..... 1
 - A. DESIGN REPORTS 1
 - B. ENVIRONMENTAL DOCUMENTATION 1
 - C. AGENCY COORDINATION 3
 - D. RAILROAD/ UTILITY INVOLVEMENTS 4
 - E. PUBLIC INVOLVEMENT 4
 - F. MEETINGS..... 5
 - G. LOCATING 5
 - H. SURVEYS 5
 - I. SOILS AND SUBSURFACE INVESTIGATIONS 6
 - J. ROAD PLANS 6
 - K. STRUCTURE PLANS 7
 - L. PLATS 7
 - M. HIGHWAY SYSTEM CHANGES 8
 - N. TRAFFIC 8
 - O. SERVICES PROVIDED BY THE MUNICIPALITY 8
- 2. PROSECUTION AND PROGRESS 8
- 3. BASIS OF PAYMENT..... 10

VI. SPECIAL PROVISIONS

1. SCOPE OF SERVICES

A. DESIGN REPORTS

- (1) Request for Exceptions to Design Standards

Not required for this CONTRACT.

- (2) Encroachment Report

Prepare an encroachment report as directed by the MUNICIPALITY. Submit three copies to the MUNICIPALITY for approval.

- (3) Other Reports:

Prepare the following engineering reports/analyses as directed by the MUNICIPALITY:

- (a) Traffic Management Plan (TMP), Type 2
- (b) Pavement Design Report
- (c) Roadside Hazard Analysis Report
- (d) Design Study Report

B. ENVIRONMENTAL DOCUMENTATION

Prepare a Categorical Exclusion Checklist (CEC) for the PROJECT as specified in the MANUAL and Chapter TRANS 400, Wisconsin Administrative Code. Furnish the required number to the DEPARTMENT and MUNICIPALITY for approval.

Prepare an environmental document that evaluates reasonable alternatives to the PROJECT and consider other reasonable actions or activities that may achieve the same or similar goals of the proposed highway PROJECT, including other or additional transportation alternatives and intermodal opportunities and the alternative of taking no action. Evaluate alternative courses of action based upon a balanced consideration of the environment, public comments, and the need for safe and efficient transportation consistent with local, state, and national environmental goals. Prepare environmental documents that are concise and emphasize significant environmental issues and plausible alternatives. Comply with requirements specified in the MANUAL and TRANS 400,

Wisconsin Administrative Code. In the event of a conflict between the MANUAL and TRANS 400, Wisconsin Administrative Code, the administrative rule supersedes.

Preparing an Environmental document beyond the level of documentation for a Categorical Exclusion Checklist (CEC) shall be considered "Extra Services".

(1) Section 4(f) Evaluation:

Not included in this CONTRACT.

(2) Section 6(f) Evaluation:

Not required in this CONTRACT.

(3) Historical and Archaeological Surveys and Studies:

(a) The DEPARTMENT will provide notification to the Native American tribes as provided in the MANUAL. The CONSULTANT shall provide a draft letter and map for the DEPARTMENT's use.

(b) Identify the Area of Potential Effect for the PROJECT. Conduct a reconnaissance survey as specified in the MANUAL. Submit the results of the archaeological and historical reconnaissance and evaluation studies to the region project manager. Obtain recommendations from SHPO, the historian and the Project Manager regarding historical/architectural reconnaissance surveys. Obtain recommendations from the archaeologist, Bureau of Environment, and the Project Manager prior to conducting evaluation studies when further work is needed.

(c) Prepare a report as required in the "Guidelines for Preparation of Formal Report on Archaeological Materials or Sites" in accordance with the MANUAL. Document the results of the reconnaissance survey for architecture/history using the "Architecture/History Survey Form".

(d) Prepare documentation for the determination of effects (No Effect, No Adverse Effects, Adverse Effects) as appropriate. Prepare Documentation for Consultation in accordance with the MANUAL and in consultation with the FHWA, SHPO, and BOE. When appropriate, Native Americans will also be included in the consultation process. Prepare a Data Recovery Plan as part of the Documentation for Consultation for Archaeological properties.

(4) Noise Analysis:

Not required in this CONTRACT.

- (5) Air Quality:

Not required in this CONTRACT.
- (6) Hazardous Materials/Contamination Assessments
 - (a) Conduct a Phase I investigation for the PROJECT in accordance with the MANUAL.
 - (b) Obtain direction from the Project Manager and the Region environmental coordinator prior to conducting further evaluation studies when Phase 1 indicates further work is needed.
 - (c) The MUNICIPALITY acknowledges that the CONSULTANT is not, by virtue of this CONTRACT, the owner or generator of any waste materials generated as a result of the Hazardous Materials/ Contamination Assessments services performed by the CONSULTANT under this CONTRACT. Dispose of investigative waste in accordance with the MANUAL.
- (7) Wetland Investigations
 - (a) Not included in this CONTRACT. Wetland delineation, related reports, and wetland mitigation plans shall be considered "Extra Services".

C. AGENCY COORDINATION

- (1) Section 401 and 402 Certifications:

Evaluate the effects of the PROJECT on water quality, in accordance with the provisions of the Clean Water Act and Chapter TRANS 400, Wisconsin Administrative Code and the MANUAL; and prepare the necessary application.
- (2) Section 404 Permits:

Not included in this CONTRACT and shall be considered "Extra Services".
- (3) Section 9 and 10 Permits:

Not required in this CONTRACT.
- (4) The CONSULTANT will provide project notification to the following agencies through correspondence:
 - (a) United States Fish and Wildlife Services
 - (b) Wisconsin Department of Natural Resources

- (c) La Crosse County
- (d) Village of Rockland
- (e) DATCP/NRCS
- (f) State Historic Preservation Office
- (g) Historical Societies

D. RAILROAD/ UTILITY INVOLVEMENTS

- (1) Railroad Negotiations/Agreements

Not required in this CONTRACT.

- (2) Utility Coordination

Perform all utility coordination in accordance with:

- (a) The MANUAL
- (b) The WisDOT "Guide to Utility Coordination"
- (c) The "Utility Coordination Task List for Design Consultant Contracts" as agreed upon April 8, 2022.
- (d) The CONSULTANT shall follow the procedures of the WisDOT Guide to Utility Coordination for non-TRANS 220 projects.

E. PUBLIC INVOLVEMENT

- (1) Public Involvement Meetings:

- (a) Conduct or assist the MUNICIPALITY in holding one (1) public involvement meeting and explain to the public concepts and probable impacts of this PROJECT.
- (b) Prepare all exhibits and supplementary handout material and provide the equipment necessary to conduct the public involvement meeting.
- (c) Prepare a summary report after the public involvement meeting.
- (d) Discuss with the MUNICIPALITY the comments received and recommend the possible disposition of these comments and suggestions after the public involvement meeting.
- (e) Make all the necessary arrangements for scheduling the public involvement meeting and provide notices and press releases for the MUNICIPALITY'S use.

- (f) Provide the MUNICIPALITY with copies of all public involvement correspondence and file notes.
- (g) Coordinate meeting schedules with the MUNICIPALITY'S representative.
- (2) Formal Public Hearing:
Not required in this CONTRACT.
- (3) Open Forum Public Hearing:
Not required in this CONTRACT.
- (4) Project Mailings, Newsletters:
Not required in this CONTRACT.

F. MEETINGS

- (1) Attend or hold an Operational Planning Meeting to discuss the organization and processing of the Services under this CONTRACT.
- (2) Attend the pre-construction via phone conference as scheduled by the DEPARTMENT.

G. LOCATING

Not required in this CONTRACT.

H. SURVEYS

- (1) Temporarily mark existing right-of-way for coordination with affected utilities and property owners.
- (2) Locate the necessary section corners for the right-of-way plat. It is estimated that four section corners need to be located and established and tied to state plane coordinates. Do not apply for reimbursement from the applicable county for these costs.
- (3) Conduct surveys that provide information necessary for the preparation of plats and acquisition of rights of way and property. Provide right-of-way monumentation information. All such information shall be provided in an electronic file in accordance with the MANUAL.

- (4) Tie surveys to section corners, quarter section corners, and to street lines or block corners in platted areas. Ties shall be in sufficient detail to permit the preparation of proper legal descriptions of the lands acquired.
- (5) Submit all survey data (including description, measured, and computed data) to the MUNICIPALITY in the AASHTO SDMS format, in accordance with the MANUAL. Copies of original notes or printouts from other systems which may be used in lieu of the SDMS Collector software shall also be provided.
- (6) Perform survey as required by the "Utility Coordination Task List for Design Consultant Contracts" as agreed upon above in Section D (1).
- (7) Conduct surveys (topographic and DTM) that provide information necessary for the development of design plans and for estimating quantities, in accordance with the MANUAL.
- (8) Set the necessary horizontal and vertical control needed for the project.

I. SOILS AND SUBSURFACE INVESTIGATIONS

Not required in this CONTRACT.

J. ROAD PLANS

- (1) Prepare Road Plans that depict PROJECT improvements that consist of reconstructing County U curve approximately 0.3 miles West of Rockland, a length not to exceed 1,000 feet.
- (2) Prepare the plans to a 1" = 40' scale on a reduced size plan (11" x 17").
- (3) Prepare Road Plans that depict the following:
 - (a) Two 12-foot lanes with 6-foot shoulders (5-foot paved, 1-foot gravel), with a design speed meeting 60 mph with a 4% max super-elevation, with a radius greater than 1,500 feet.
 - (b) Shoulder rumble strips will be added within the project limits.
 - (c) It is anticipated that the roadway will be closed to traffic and detoured during construction.

Section II C (9) in the Standard Provision of the CONTRACT is amended to include the following plans:

- 1) Title Sheet
- 2) General Notes
- 3) Typical Sections
- 4) Construction Details
- 5) Traffic Control and Detour Plans

- 6) Erosion Control Plans
- 7) Alignment Details
- 8) Miscellaneous Quantities
- 9) Plan & Profile Sheets
- 10) Earthwork Data
- 11) Cross Sections

K. STRUCTURE PLANS

Not required in this CONTRACT.

L. PLATS

- (1) Prepare Right-of-Way Plats in accordance with the MANUAL.
- (2) A right of way descriptions shall be provided for all individual parcels of land to be acquired as Right of Way for the PROJECT. An individual legal description shall be provided for each parcel, or an envelope description that does not cover more than one page of the plat. Descriptions shall be by metes and bounds in accordance with the provisions as set forth in the MANUAL, or in the case of platted property by suitable reference to the platted data. For all unplatted property the descriptions shall be referenced to and tied into the pertinent section or quarter section corners. The CONSULTANT shall submit the legal descriptions on a hard copy and on a CD/DVD or an electronic e-mail file to the DEPARTMENT.
- (3) The CONSULTANT shall prepare the descriptions in line item format using IBM compatible PC-DOS-Word Perfect software and provide a copy of this diskette to the DEPARTMENT and MUNICIPALITY.
- (4) Field locate and temporarily mark the new right of way boundaries in a manner which will facilitate the appraisal of all affected parcels.
- (5) Monument the new and existing right of way boundaries in accordance with the procedures outlined in the MANUAL.
- (6) Prepare an Acquisition Stage Relocation Plan in accordance with the procedures as set forth in the MANUAL.
- (7) Provide on the Right-of-Way Plat, point numbers for all new right-of-way points to be monumented and all existing right-of-way points. A CD/DVD or electronic e-mail file with point numbers in SDMS format, in ground coordinates, is to be provided to the REGION.

- (8) Be responsible for all changes to the plat sheets and legal descriptions until the Real Estate Certification is completed. Changes on the R/W plat that occur following the initial relocation order (excluding hardship or protective purchase) are to be anticipated and are part of this contract.
- (9) Submit the Right-of-Way Plat electronically in accordance with the MANUAL to be reproduced by the DEPARTMENT for each relocation order or when requested by the DEPARTMENT.

M. HIGHWAY SYSTEM CHANGES

Not required in this CONTRACT.

N. TRAFFIC

Not required in this CONTRACT.

O. SERVICES PROVIDED BY THE MUNICIPALITY

The MUNICIPALITY will provide to the CONSULTANT the following for the PROJECT:

- (1) Meeting site for Public Information Meeting and Operational Planning Meeting.
- (2) Property owner and utility contact list.
- (3) As-built plans as available.

The DEPARTMENT will provide to the CONSULTANT the following for the PROJECT:

- (1) State Municipal Agreement.

2. PROSECUTION AND PROGRESS

- (1) The MUNICIPALITY shall report on the progress of the PROJECT as stipulated in the contract agreement. Standard benchmarks, consistent with DEPARTMENT'S internal staff benchmarks, will be reported monthly to the DEPARTMENT. The actual start, projected or actual finish date, and percent of work complete will be included for all relevant benchmarks on any project report required for delivery to DEPARTMENT staff. The report can be delivered in electronic format consistent with current DEPARTMENT standards (Microsoft Project), or on paper.
- (2) The CONSULTANT proposes to sublet these services to
 - (a) Historical and archeological surveys to Mississippi Valley Archaeological Center (MVAC)

- (b) Title Searches to Southwest Title, LLC
 - (c) Right-of-way plat to Walsh Geomatics
 - (d) Right-of-way acquisition to Right-of-Way Professionals
- (3) The following items of work will be completed and submitted to the MUNICIPALITY by the indicated dates, if CONSULTANT has received the Notice to Proceed by June 15, 2022.

Report Title	Date
Project Survey	June 2022
Operational Planning Meeting	August 2022
30% Preliminary Road Plan	August 2022
Public Information Meeting	September 2022
60% Preliminary Road Plan	December 2022
Environmental Document	December 2022
Design Study Report	January 2023
Right-of-way Plat	February 2023
Final Road Plans/Pre-P.S. & E.	November 1, 2024
Final P.S. & E.	February 1, 2025
LET (by DEPARTMENT)	May 13, 2025
Pre-Construction Meeting (by DEPARTMENT)	July 2025

Certificate Of Completion

Envelope Id: 72B3B2F0752449AF8B6ACD36A16834A7	Status: Sent
Subject: Please DocuSign: 7076-01-02_Signatures + special Provisions.pdf	
Source Envelope:	
Document Pages: 14	Signatures: 0
Certificate Pages: 5	Initials: 0
AutoNav: Enabled	
EnvelopeId Stamping: Enabled	
Time Zone: (UTC-06:00) Central Time (US & Canada)	
	Envelope Originator:
	Brandi Workman
	4822 Madison Yards Way
	Madison, WI 53705
	brandi.workman@dot.wi.gov
	IP Address: 165.189.255.35

Record Tracking

Status: Original	Holder: Brandi Workman	Location: DocuSign
5/13/2022 9:23:28 AM	brandi.workman@dot.wi.gov	
Security Appliance Status: Connected	Pool: StateLocal	
Storage Appliance Status: Connected	Pool: Wisconsin Department of Transportation	Location: DocuSign

Signer Events

	Signature	Timestamp
Joseph Langeberg		Sent: 5/13/2022 9:29:50 AM
jlangeberg@lacrossecounty.org		Viewed: 5/14/2022 10:03:58 AM
La Crosse County Highway Commissioner		
Security Level: Email, Account Authentication (None)		

Electronic Record and Signature Disclosure:
 Accepted: 3/14/2022 12:14:46 PM
 ID: 2bfbb139-d47d-4d21-8612-9415a2f79a7d

Jay Wheaton
 jay.wheaton@meadhunt.com
 Security Level: Email, Account Authentication (None)
Electronic Record and Signature Disclosure:
 Accepted: 7/31/2020 8:08:20 AM
 ID: b6a64d26-9e07-4750-998e-47e2619d2b2f

CAU Consultant SG

Signing Group: CAU Consultant SG
 Security Level: Email, Account Authentication (None)
Electronic Record and Signature Disclosure:
 Not Offered via DocuSign

In Person Signer Events	Signature	Timestamp
Editor Delivery Events	Status	Timestamp
Agent Delivery Events	Status	Timestamp
Intermediary Delivery Events	Status	Timestamp
Certified Delivery Events	Status	Timestamp
Carbon Copy Events	Status	Timestamp

Carbon Copy Events	Status	Timestamp
---------------------------	---------------	------------------

Brandi Workman
brandi.workman@dot.wi.gov
Security Level: Email, Account Authentication
(None)

Electronic Record and Signature Disclosure:
Not Offered via DocuSign

Brandi Workman
brandi.workman@dot.wi.gov
Security Level: Email, Account Authentication
(None)

Electronic Record and Signature Disclosure:
Not Offered via DocuSign

Brandi Workman
brandi.workman@dot.wi.gov
Security Level: Email, Account Authentication
(None)

Electronic Record and Signature Disclosure:
Not Offered via DocuSign

Witness Events	Signature	Timestamp
-----------------------	------------------	------------------

Notary Events	Signature	Timestamp
----------------------	------------------	------------------

Envelope Summary Events	Status	Timestamps
--------------------------------	---------------	-------------------

Envelope Sent	Hashed/Encrypted	5/13/2022 9:29:50 AM
---------------	------------------	----------------------

Payment Events	Status	Timestamps
-----------------------	---------------	-------------------

Electronic Record and Signature Disclosure

ELECTRONIC RECORD AND SIGNATURE DISCLOSURE

From time to time, Wisconsin Department of Transportation (we, us or Company) may be required by law to provide to you certain written notices or disclosures. Described below are the terms and conditions for providing to you such notices and disclosures electronically through your DocuSign, Inc. (DocuSign) Express user account. Please read the information below carefully and thoroughly, and if you can access this information electronically to your satisfaction and agree to these terms and conditions, please confirm your agreement by clicking the 'I agree' button at the bottom of this document.

Getting paper copies

At any time, you may request from us a paper copy of any record provided or made available electronically to you by us. For such copies, as long as you are an authorized user of the DocuSign system you will have the ability to download and print any documents we send to you through your DocuSign user account for a limited period of time (usually 30 days) after such documents are first sent to you. After such time, if you wish for us to send you paper copies of any such documents from our office to you, you will be charged a \$0.00 per-page fee. You may request delivery of such paper copies from us by following the procedure described below.

Withdrawing your consent

If you decide to receive notices and disclosures from us electronically, you may at any time change your mind and tell us that thereafter you want to receive required notices and disclosures only in paper format. How you must inform us of your decision to receive future notices and disclosure in paper format and withdraw your consent to receive notices and disclosures electronically is described below.

Consequences of changing your mind

If you elect to receive required notices and disclosures only in paper format, it will slow the speed at which we can complete certain steps in transactions with you and delivering services to you because we will need first to send the required notices or disclosures to you in paper format, and then wait until we receive back from you your acknowledgment of your receipt of such paper notices or disclosures. To indicate to us that you are changing your mind, you must withdraw your consent using the DocuSign 'Withdraw Consent' form on the signing page of your DocuSign account. This will indicate to us that you have withdrawn your consent to receive required notices and disclosures electronically from us and you will no longer be able to use your DocuSign Express user account to receive required notices and consents electronically from us or to sign electronically documents from us.

All notices and disclosures will be sent to you electronically

Unless you tell us otherwise in accordance with the procedures described herein, we will provide electronically to you through your DocuSign user account all required notices, disclosures, authorizations, acknowledgements, and other documents that are required to be provided or made available to you during the course of our relationship with you. To reduce the chance of you inadvertently not receiving any notice or disclosure, we prefer to provide all of the required notices and disclosures to you by the same method and to the same address that you have given us. Thus, you can receive all the disclosures and notices electronically or in paper format through the paper mail delivery system. If you do not agree with this process, please let us know as described below. Please also see the paragraph immediately above that describes the consequences of your electing not to receive delivery of the notices and disclosures electronically from us.

How to contact Wisconsin Department of Transportation:

You may contact us to let us know of your changes as to how we may contact you electronically, to request paper copies of certain information from us, and to withdraw your prior consent to receive notices and disclosures electronically as follows:

To contact us by email send messages to: david.esse@dot.wi.gov

To advise Wisconsin Department of Transportation of your new e-mail address

To let us know of a change in your e-mail address where we should send notices and disclosures electronically to you, you must send an email message to us at david.esse@dot.wi.gov and in the body of such request you must state: your previous e-mail address, your new e-mail address. We do not require any other information from you to change your email address..

In addition, you must notify DocuSign, Inc to arrange for your new email address to be reflected in your DocuSign account by following the process for changing e-mail in DocuSign.

To request paper copies from Wisconsin Department of Transportation

To request delivery from us of paper copies of the notices and disclosures previously provided by us to you electronically, you must send us an e-mail to david.esse@dot.wi.gov and in the body of such request you must state your e-mail address, full name, US Postal address, and telephone number. We will bill you for any fees at that time, if any.

To withdraw your consent with Wisconsin Department of Transportation

To inform us that you no longer want to receive future notices and disclosures in electronic format you may:

- i. decline to sign a document from within your DocuSign account, and on the subsequent page, select the check-box indicating you wish to withdraw your consent, or you may;
- ii. send us an e-mail to david.esse@dot.wi.gov and in the body of such request you must state your e-mail, full name, IS Postal Address, telephone number, and account number. We do not need any other information from you to withdraw consent.. The consequences of your withdrawing consent for online documents will be that transactions may take a longer time to process..

Required hardware and software

Operating Systems:	Windows2000? or WindowsXP?
Browsers (for SENDERS):	Internet Explorer 6.0? or above
Browsers (for SIGNERS):	Internet Explorer 6.0?, Mozilla FireFox 1.0, NetScape 7.2 (or above)
Email:	Access to a valid email account
Screen Resolution:	800 x 600 minimum
Enabled Security Settings:	<ul style="list-style-type: none"> •Allow per session cookies •Users accessing the internet behind a Proxy Server must enable HTTP 1.1 settings via proxy connection

** These minimum requirements are subject to change. If these requirements change, we will provide you with an email message at the email address we have on file for you at that time providing you with the revised hardware and software requirements, at which time you will have the right to withdraw your consent.

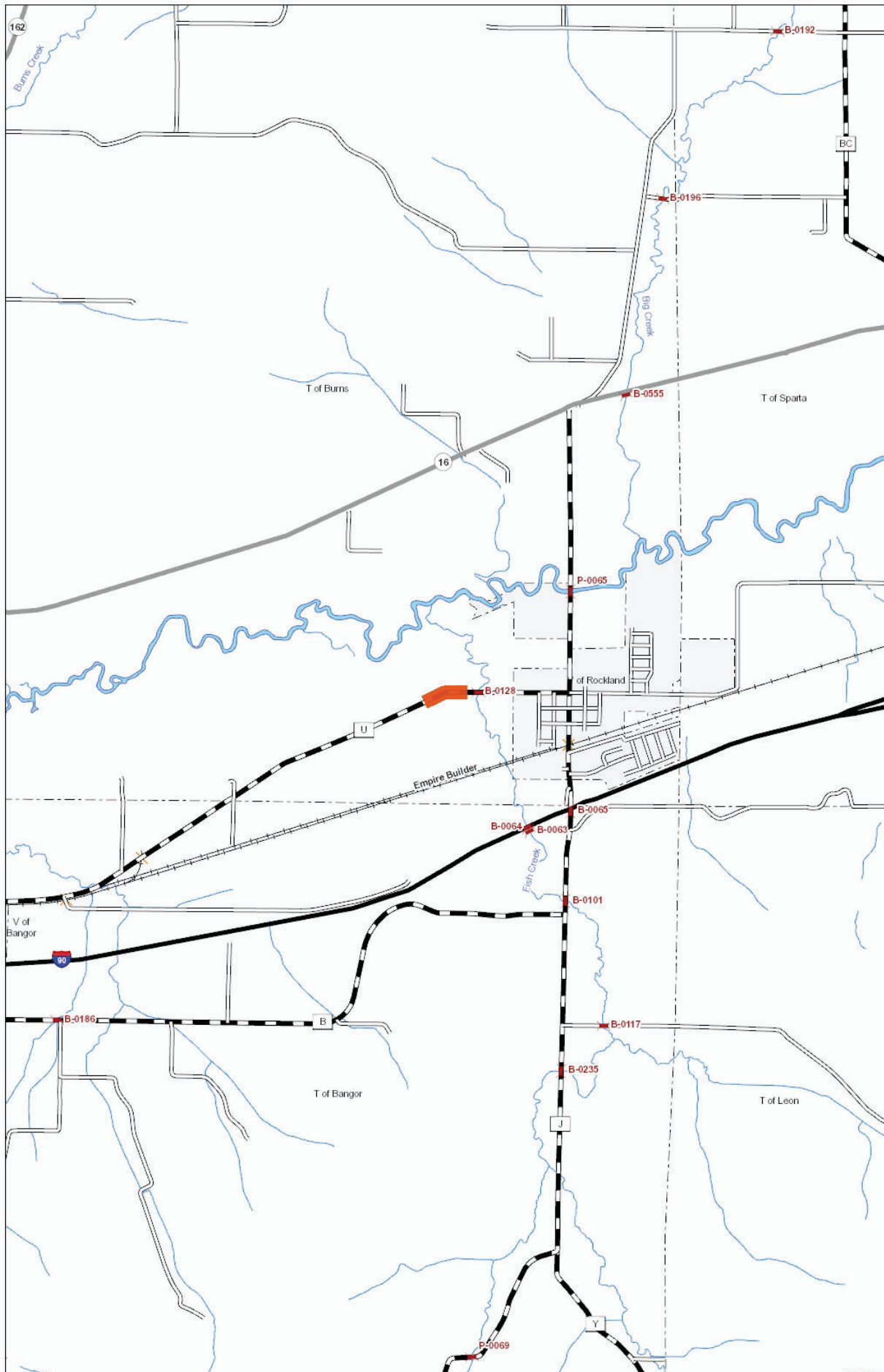
Acknowledging your access and consent to receive materials electronically

To confirm to us that you can access this information electronically, which will be similar to other electronic notices and disclosures that we will provide to you, please verify that you were able to read this electronic disclosure and that you also were able to print on paper or electronically save this page for your future reference and access or that you were able to e-mail this disclosure and consent to an address where you will be able to print on paper or save it for your future reference and access. Further, if you consent to receiving notices and disclosures exclusively in electronic format on the terms and conditions described above, please let us know by clicking the 'I agree' button below.

By checking the 'I Agree' box, I confirm that:

- I can access and read this Electronic CONSENT TO ELECTRONIC RECEIPT OF ELECTRONIC RECORD AND SIGNATURE DISCLOSURES document; and
- I can print on paper the disclosure or save or send the disclosure to a place where I can print it, for future reference and access; and
- Until or unless I notify Wisconsin Department of Transportation as described above, I consent to receive from exclusively through electronic means all notices, disclosures, authorizations, acknowledgements, and other documents that are required to be provided or made available to me by Wisconsin Department of Transportation during the course of my relationship with you.

CDR Map



Recommendation for Approval

Standing Committee: Public Works and Infrastructure

Department: Highway Department

Subject: Purchase of one (1) chip spreader

Background information:

The purpose of this procurement process is to purchase of one (1) chip spreader to replace unit 411 chip spreader purchased in year 2001. The replaced unit will be taken out of service and placed for sale on the Wisconsin Public Service Auction website. The chip spreader will be used for spreading granite chips on roads over 5 years old. This extends the life of the road surface. This operation is for County roads and other local municipalities.

Evaluation information:

The RFP was placed on the County RFP webpage and a legal notice was advertised in the La Crosse Tribune. The RFP was sent directly to area dealers and placed on the DemandStar website. The Highway Department received two (2) proposals. An evaluation team consisting of the Highway Commissioner, Assistant Highway Commissioner, Highway Shop Superintendent, and the Purchasing Manager reviewed the proposals. The proposals were evaluated on the following criteria:

- Specifications 30 points
- Cost 50 points
- Warranty 20 points
- Total 100 points
- *Vendor History 0 to -15

*This RFP is crucial to an important public service performed by the La Crosse County Highway Department. As part of this evaluation, a vendor may have up to 15 points subtracted based on the vendor’s past historical integrity with regards to providing required equipment specifications and supporting the performance of equipment.

Vendor	Evaluation Score	Cost
Aring Etnyre 4-wheel drive 12 / 24 variable	100	\$389,900.00
Roland Rosco / Lee Boy CSV	97	\$409,069.60

Primary strengths of recommended vendor:

1. Lowest cost
2. Meets specifications

Recommendation / Action Requested:

Based on the review of the proposals, the evaluation team recommends the purchase of one (1) chip spreader from Aring.

Quote/Bid Form **Budgeted Items**

Description of purchase: Truckload Quantity of Crack Fill Material. Approx. 46,500 LBS.
Bid amount price is per pound.

Vendor	Bid Amount / Rate/Cost
1. <u>Midstates Equipment & Supply – Meadows 3405</u>	<u>\$ 0.615</u>
2. <u>Midstates Equipment & Supply – Maxwell 61</u>	<u>\$ 0.675</u>
3. <u>Konrad Material Sales – Deery 102 NB</u>	<u>\$ 0.6775</u>
4. <u>Sherwin Industries – 34221 No Box</u>	<u>\$ 0.678</u>
5. <u>Sherwin Industries – 34221 Pleximelt</u>	<u>\$ 0.728</u>

Selected Vendor Number: 2

Please submit Quote Documentation with this form.

Explanation of sole source purchase or of selected vendor that has not proposed the lowest bid amount/rate:

Material with vendor 1 is a boxed material. It will cost us much more to cut the box open and return the cardboard to our shop. Our efficiency will be reduced dramatically.

MIDSTATES

EQUIPMENT & SUPPLY

606 County Rd. #1
Mountain Lake, MN 56159
Tel. (507) 427-3807
Fax (507) 427-3709
Toll Free 1-800-929-3807

May 17, 2022

La Crosse County Highway Dept.
301 Carlson Road
West Salem, WI 54669

Public Works & Infrastructure Committee,

Thank you for the opportunity to quote sealant for your asphalt maintenance needs. ***This quote is an option to keep costs down for this construction season.***

W.R. Meadows 3405 Regular (In Boxes)

Type II Spec with the following modifications: 50% elongation at -20 degrees.
Meets ASTM 6690 Type II

- 43,560 lbs. for full semi-load @ \$0.615/lb. = \$26,789.40 delivered price

TERMS: Owner agrees that all payments required under this Contract shall be due and payable within 30 days of date of invoice. Owner further agrees that Midstates Equipment & Supply may charge interest at the annual rate of eighteen percent (18%), unless a lesser percentage is required by law on any sum due under this Contract which is not paid within 30 days of invoice date. If payments are not made when due, interest, costs incidental to collection and attorney's fees (if any attorney is retained for collection) shall be added to the unpaid balance. Midstates Equipment & Supply reserves the right, without penalty from Owner, to stop service or shipment if the Owner does not make payments to Midstates Equipment & Supply when due. This Proposal/Contract may be withdrawn by Midstates Equipment & Supply if not accepted within 30 days, or at anytime, subject to increases related to material prices as noted above.

Acceptance of Proposal – The above prices, specifications and conditions are satisfactory and are hereby accepted. You are authorized to do the work as specified. This proposal may be withdrawn if not accepted within April 2022.

Date of Acceptance _____

PO# _____

Signature _____



LA CROSSE COUNTY

Joseph Langeberg, PE
Commissioner

Keith Back
Assistant Commissioner

Jay Anderson
Highway Engineer

Highway Department
301 Carlson Road ~ West Salem, Wisconsin 54669-9332
(608) 786-3810 Fax (608) 786-3816
www.lacrossecounty.org

Leif Nelson
Patrol Superintendent

Tim Hammes
Patrol Superintendent

Catherine Tschumper
Shop Superintendent

May 16, 2022

LA CROSSE COUNTY HIGHWAY DEPARTMENT REQUEST FOR BIDS FOR: ASPHALT/RUBBER SEALANT

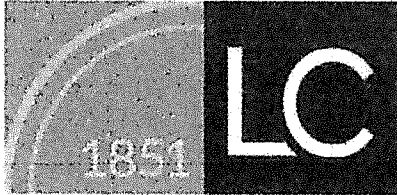
The La Crosse County Highway Department is requesting bids for ASPHALT/RUBBER SEALANT. Bids are to be returned to the La Crosse County Highway Office by 11:00 a.m., Thursday, May 26, 2022. The bids **must be delivered** to 301 Carlson Road, West Salem WI 54669-9332. E-mails and faxes are not allowed. The product bid must meet ASTM D 6690 Type II or Type IV specifications. The product is to be delivered F.O.B. to the La Crosse County Highway Shop at 301 Carlson Rd., West Salem WI 54669. La Crosse County intends to purchase a quantity of approximately 45,000 lbs. +/- (truckload quantity). The product must be packaged in a "melt able" container.

	Quantity	Cost per Pound
Asphalt-Rubber Sealant: <u>Maxwell Elastoflex 61 (Polyskin)</u> (Product Name)	<u>46,500 LBS</u> Estimated	<u>\$ 0.675/lb</u>

Vendor: Midstates Equipment & Supply, Inc.
606 County Road 1
Mountain Lake, MN 56159
(Address)


(Authorized Dealer Signature)
7-14 days from Ordering
(Delivery Date)

La Crosse County reserves the right to reject all bids, to accept whichever bid the Highway Commissioner deems to be in the interest of La Crosse County, and to waive any technicalities.



LA CROSSE COUNTY

Joseph Langeberg, PE
Commissioner

Keith Back
Assistant Commissioner

Jay Anderson
Highway Engineer

Highway Department

301 Carlson Road ~ West Salem, Wisconsin 54669-9332
(608) 786-3810 Fax (608) 786-3816
www.lacrossecounty.org

Leif Nelson
Patrol Superintendent

Tim Hammes
Patrol Superintendent

Catherine Tschumper
Shop Superintendent


May 16, 2022

LA CROSSE COUNTY HIGHWAY DEPARTMENT REQUEST FOR BIDS FOR: ASPHALT/RUBBER SEALANT

The La Crosse County Highway Department is requesting bids for ASPHALT/RUBBER SEALANT. Bids are to be returned to the La Crosse County Highway Office by 11:00 a.m., Thursday, May 26, 2022. The bids **must be delivered** to 301 Carlson Road, West Salem WI 54669-9332. E-mails and faxes are not allowed. The product bid must meet ASTM D 6690 Type II or Type IV specifications. The product is to be delivered F.O.B. to the La Crosse County Highway Shop at 301 Carlson Rd., West Salem WI 54669. La Crosse County intends to purchase a quantity of approximately 45,000 lbs. +/- (truckload quantity). The product must be packaged in a "melt able" container.

	Quantity	Cost per Pound
Asphalt-Rubber Sealant: <u>Deery 10Z NB</u> (Product Name)	<u>44850</u> LBS	\$ <u>0.6775</u>

Vendor: Konrad Material Sales
1228 467th St #
Stanchfield, MN 55080
(Address)


(Authorized Dealer Signature)
15 Days ARO
(Delivery Date)

La Crosse County reserves the right to reject all bids, to accept whichever bid the Highway Commissioner deems to be in the interest of La Crosse County, and to waive any technicalities.



LA CROSSE COUNTY

Joseph Langeberg, PE
Commissioner

Keith Baek
Assistant Commissioner

Jay Anderson
Highway Engineer

Highway Department
301 Carlson Road - West Salem, Wisconsin 54669-9332
(608) 786-3810 Fax (608) 786-3816
www.lacrossecounty.org

Leif Nelson
Patrol Superintendent

Tim Hammes
Patrol Superintendent

Catherine Tschumper
Shop Superintendent

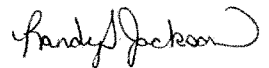
May 16, 2022

LA CROSSE COUNTY HIGHWAY DEPARTMENT REQUEST FOR BIDS FOR: ASPHALT/RUBBER SEALANT

The La Crosse County Highway Department is requesting bids for ASPHALT/RUBBER SEALANT. Bids are to be returned to the La Crosse County Highway Office by 11:00 a.m., Thursday, May 26, 2022. The bids **must be delivered** to 301 Carlson Road, West Salem WI 54669-9332. E-mails and faxes are **not** allowed. The product bid must meet ASTM D 6690 Type II or Type IV specifications. The product is to be delivered F.O.B. to the La Crosse County Highway Shop at 301 Carlson Rd., West Salem WI 54669. La Crosse County intends to purchase a quantity of approximately 45,000 lbs. +/- (truckload quantity). The product must be packaged in a "melt able" container.

	Quantity	Cost per Pound
Asphalt-Rubber Sealant: <u>#34221 Pleximelt - Halls, TN</u> (Product Name)	<u>44,100</u> LBS	<u>\$ 0.7280 per pound</u> \$32,104.80
<u>#34221 No Box - DeKalb, IL</u>	<u>44,850</u> LBS	<u>\$0.6780 per pound</u> \$30,408.30

Vendor: Sherwin Industries, Inc.
2129 West Morgan Avenue
Milwaukee, WI 53221
(Address)

 , Vice President
(Authorized Dealer Signature)

Delivery quoted at time of order. Lead times can
(Delivery Date)
vary based on current inventory. Estimated lead
time 7-21 Days ARO

La Crosse County reserves the right to reject all bids, to accept whichever bid the Highway Commissioner deems to be in the interest of La Crosse County, and to waive any technicalities.