

LA CROSSE COUNTY NOTICE OF MEETING

COMMITTEE OR BOARD:	PUBLIC WORKS AND INFRASTRUCTURE COMMITTEE	
DATE OF MEETING:	MONDAY, AUGUST 8, 2022	
MEETING PLACE:	Administrative Center, County Board Room 1700 Click here to join the meeting	
TIME OF MEETING:	4:30 P.M.	
1.	Call to Order/Roll Call	
2.	Public Comment **Please see below on how to sign up for making public comment**	
3.	Approve PWI Minutes of July 11, 2022	
4.	Consent Agenda (Informational): a. Sharps Disposal MOU	
5.	Conference/Meeting Report	
6.	An Ordinance to Amend s. 7.08 Entitled "All-Terrain Vehicles" of the General Code of La Crosse County, Wisconsin	
7.	An Ordinance to Amend s. 7.04(5) Entitled "Speed Limits" of the General Code of La Crosse County, Wisconsin	
8.	Approve Oktoberfest Parking Concession	
9.	Policy Discussion Continued on Roads and Bridges Bypass	
10.	Future Agenda Items	
11.	Adjourn	
NEWS MEDIA	DEPARTMENTS/STAFF	COMMITTEE MEMBERS
La Crosse Tribune	County Board Chair	Pam Viner, Chair
Other Media	County Administrator	Ralph Geary
OTHERS:	County Clerk	Steve Doyle
<u>Email:</u>	Facilities	Dan Hesse
Lanae Nickelotti		Matt Nikolay
Megan DeVore	<u>Email:</u>	Dennis Jacobsen
Jackie Eastwood	Jadd Stilwell	Jack Pogreba
Larry Hougom	Ryan Westpfahl	
Gary Hougom	Joe Langeberg	
Maureen Freedland	Keith Back	
	Mary Kaufmann	
	Bryan Jostad	

COMMITTEE MEMBERS: If unable to attend, call the County Clerk’s Office at 785-9581.

****PUBLIC COMMENT:** Individuals may make a public comment in person or virtually. For individuals intending on making a virtual public comment, **please register at least 24-hours** in advance by emailing publiccomment@lacrossecounty.org or leave a message at 785-9700. Please include your name and email address you will be using to connect with the committee, along with the name of the committee you would like to provide a public comment.

The Committee may receive information from the public, but the Committee reserves the right to limit the time that the public may comment and the degree to which members of the public may participate in the meeting.

PERSONS WITH DISABILITIES: If you need accommodations to attend this meeting, please call the County Clerk’s Office at 785-9581 ASAP.

DATE NOTICE FAXED/MAILED/POSTED: August 4, 2022

This meeting may be recorded, and any such recording is subject to Disclosure under the Wisconsin Open Records Law

PUBLIC WORKS AND INFRASTRUCTURE COMMITTEE

Monday, July 11, 2022

Room 1700, County Board Room

4:00 p.m.

MEMBERS PRESENT:	Chair Pam Viner, Dan Hesse, Ralph Geary, Dennis Jacobsen, Steve Doyle, Jack Pogreba
MEMBERS EXCUSED:	Matt Nikolay
MEMBERS ABSENT:	None

CALL TO ORDER: Chair Pam Viner called the meeting to order at 4:00 p.m.

PUBLIC COMMENT: NONE

APPROVE MINUTES OF June 6, 2022

MOTION by Geary/Pogreba to approve the minutes of the June 6, 2022, PWI Committee Meeting. **Motion carried unanimously; one excused (Nikolay).**

CONSENT AGENDA (INFORMATIONAL):

- a. Updated on July 1st Mindoro Park Transfer

CONFERENCE/MEETING REPORT: NONE

APPROVE BUILDING A PAVILION IN 2023 AT NESHONOC SOUTH BOAT LANDING AS AN EAGLE SCOUT PROJECT

An Eagle Scout from Onalaska is requesting to build a pavilion over a handicap picnic table and pre-existing concrete slab in Lake Neshonoc County Park near the south boat landing. Project would start late summer or early fall. **Motion** by Pogreba/Hesse to table until next month. **Motion carried unanimously; one excused (Nikolay).**

APPROVAL OF BID FOR RUBBER PLOW BLADES

The Highway Department needs 75 rubber plow blades per year for snow and ice removal for County and State highways. We received 4 bids for 75 plow blades. The low bid is \$29,580, from Gray's Inc. **MOTION** by Geary/Hesse to approve. **Motion carried unanimously; one excused (Nikolay).**

APPROVAL OF COUNTY SALT BID

We have ordered 5,000 ton of salt through the State Salt bid. The cost per ton delivered is \$80.18 through Morton Salt Company. **MOTION** by Hesse/Pogreba to approve. **Motion carried unanimously; one excused (Nikolay).**

REQUEST APPROVAL TO GO OUT FOR RFP'S ON TWO TRUCK CHASSIS THAT ARE ON THE 2023 EQUIPMENT REQUEST LIST

Request approval to go out for RFP's on two truck Chassis. The truck chassis' are for trucks on the 2023 Equipment Request List. **MOTION** by Geary/Pogreba to approve. **Motion carried unanimously; one excused (Nikolay).**

FACILITATED DISCUSSION ON ROADS AND BRIDGES BYPASS

Heather Quackenboss presented on potential guidelines for road and bridges bypass. Factors considered were Average Daily Traffic, Detour Length, Adjacent property limitations, Cost, Closure duration; exclude emergency closures, and communication. Discussion ensued.

PUBLIC WORKS AND INFRASTRUCTURE COMMITTEE
Monday, July 11, 2022
Page Two

NEXT COMMITTEE MEETING: August 8, 2022

FUTURE AGENDA ITEMS: None

ADJOURNMENT: MOTION by Pogreba/Hesse to approve. **Motion carried unanimously; one excused (Nikolay).**

The meeting adjourned at 4:58 p.m.

Disclaimer: The above minutes may be approved, amended, or corrected at the next committee meeting. Erin Klar, Recorder

SHARPS COLLECTION: PROGRAM SUMMARY

In 2018, the La Crosse Community Foundation, Mayo Clinic Health System, Gundersen Health System, and the La Crosse County Health Department joined resources to form the Alliance to Heal coalition. Its purpose is to develop and implement strategies that address the opioid epidemic.

As part of its strategy, nine “self-serve” sharps collection drop boxes have been placed throughout La Crosse County – six in the City of La Crosse, two in the City of Onalaska and one in Village of West Salem. The drop boxes were purchased via funding from the Western Wisconsin Health Care Readiness Coalition (HERC) at ~\$1100 each. The original goal of these drop boxes was to minimize the impacts of single use needles being improperly discarded in public places. Additionally, they provided an outlet for residents who accumulate sharps in containers from home use.

Each drop box is designed to channel disposed materials into a 38-gallon lined container. Each drop box location was registered as a sharps collection station per s. NR 526, Wis. Adm. Code. The drop boxes were initially serviced by a single employee of Gundersen Health System (GHS) weekly. Contents were field sorted (i.e., segregating trash, medications, sharps, etc.). Approximately 360 lbs. of Infectious waste was repackaged, on-site, into 18-gallon containers (18-gallons is the maximum allowable container size holding loose sharps allowed to be transported per DOT regulations found in 49 CFR 134(c)(2)(x)). Packaged sharps were transported back to GHS in a WDNR licensed GHS vehicle and disposed via GHS’ infectious waste contract.

In the Fall 2021, the employee responsible for servicing the drop boxes took another position outside of GHS thus leaving the Alliance devoid of an option for emptying the drop boxes and disposing of materials. La Crosse County Administration, Health Department and Solid Waste Department arrived at two options for continuing this service:

Option 1 - Keep the drop boxes and collection the same (collection for large containers and individual needles) – Would need to contract with outside vendor with the lowest Quote being LRI \$1,400/week or \$72,800 annually.

Reasons internal management of the program is not feasible under its current operation:

- Health and Safety: Boxes require field sorting which significantly increases exposure risks (transferring from totes to 18-gallon container)
- Regulation: Controlled Medications - During field (or workplace) sorting staff must handle prescription medication and controlled substances (not allowed for our staff without presence of a law enforcement officer)

Option 2 – Modification of boxes to support collection of needles into single 18-gallon container (reduce opening to not allow for large containers). Could manage internally (Estimated Cost - 25% of managing externally if we could complete the following)

- Modify box to utilize 18-gallon tote inside – eliminating field sorting and management of controlled medication (staff would remove container/cover/seal and transport to facility)

- Utilize smaller opening to eliminate waste, dog waste bags, and large containers of sharps (Large containers are free to dispose of for residents at the HHM year-round facility and multiple other locations)
- Reason for the emphasis on 18-gallon container is that is the maximum size for legal transportation under our license.
- Gundersen and Mayo would need to provide containers/disposal, and if desired, sorting at their facility.
- HR would be involved with final review of job description to facilitate all staff performing task. (No reliance on a single individual)
- Solid Waste/HHM would provide PPE, Training, Tools/Equipment, Transportation and necessary license and reporting – HHM would request addition funding to cover labor costs
 - Labor costs would be associated with the number of boxes being serviced. Support from Solid Waste, Health Department and impacted Cities has been requested.
- The Health Department would utilize its public outreach team to educate residents and businesses on proper sharps disposal.

Ultimately, it was decided that Option 2 would provide the most sustainable solution and is currently being implemented as follows:

- All drop boxes have been relabeled to indicate for residential use only along with a QR code directing individuals to the Solid Waste website for more information.
- Mayo and Gundersen are providing in-kind 18-gallon containers and accepting full containers in return for disposal. (Example- Memorandum of Understanding attached)
- The Solid Waste Department is providing in-kind transportation. HHM staff are servicing the drop boxes.
- Drop boxes are being modified, by Facilities, to reduce the slot opening and direct single needles into an 18-gallon container that will eliminate the need for field sorting. A local fabricator will be asked to provide an estimate on retrofitting the remainder of the drop boxes.
- The Health Department is developing a community outreach program directing residents and businesses on proper sharps disposal options.
- The Solid Waste Department will be installing an unmodified drop box for individuals who wish to dispose of sharps containers after hours at the entrance to the HHM Facility.

**MEMORANDUM OF UNDERSTANDING
BETWEEN LA CROSSE COUNTY AND MAYO CLINIC HEALTH SYSTEM
REGARDING MANAGEMENT OF COMMUNITY SHARPS BOXES**

I. PARTIES

This Memorandum of Understanding (“MOU”) is made and entered into by and between the parties of the La Crosse County Solid Waste and Health Departments (“County”) and Mayo Clinic Health System – La Crosse (“Mayo”).

II. RECITALS

- a) Community Sharps Drop boxes are placed throughout La Crosse County under the auspices of The Alliance to Heal consortium with the goal of reducing used needles in public spaces.
- b) The drop boxes must be serviced frequently to prevent health hazards to the public and waste workers.
- c) Collected loose needles must be transported in lockable sharps containers less than or equal to 18-gallons in size per DOT regulations.
- d) Used needles are considered “infectious waste” by definition.
- e) An annual Wisconsin DNR solid waste transportation license is required for hauling infectious waste in quantities of 50 pounds or more per month.
- f) A Wisconsin DNR solid waste storage license is required when storing greater than 500 pounds of infectious waste at any given time.
- g) In 2021, the County began servicing community drop boxes with all expenses incurred by the County.
- h) In 2022, the County partnered with Mayo who agreed to accept infectious waste collected from community drop boxes and supply replacement containers and red bag liners.
- i) All parties now wish to enter into this agreement to address regular servicing of community sharps boxes.

III. RESPONSIBILITIES OF THE PARTIES

County Solid Waste Department Responsibilities:

In support of this endeavor, the County will, at no expense to Mayo:

- 1) Provide staffing, equipment, training, travel and a licensed county vehicle necessary to safely and lawfully service the community drop boxes.
- 2) Service community drop boxes on a weekly or bi-weekly basis, depending on seasonal use.
- 3) Securely store up to, but not more than, 500 lbs of collected infectious waste at any given time.
- 4) Label, date, weigh and record all collected infectious waste
- 5) Arrange for disposal with and lawfully transport infectious waste to Mayo as storage quantities dictate.

Mayo Health Systems Responsibilities:

In support of this endeavor, Mayo will, at no expense to the County:

- 1) Accept all infectious waste collected by the County from community sharps drop boxes.

- 2) At the time of acceptance, provide replacement shipping bins, lockable 18-gallon sharps containers and red bag liners in quantities equal to or greater than what was transported by the County.
- 3) At the time of acceptance, assist with offloading infectious waste containers.
- 4) At the time of acceptance, provide a receipt to the County listing the date received, quantity received and signature of authorized personnel.
- 5) Lawfully store and dispose of accepted infectious waste in accordance with all local, state and federal regulations.

IV. Term of the MOU

The term of this MOU shall be effective upon signature of the parties and remain in effect for five (5) years from the date of signing. This MOU may be amended or extended at any time by mutual agreement of both parties.

V. Severability

Any provision of this MOU determined to be invalid as a matter of law is severable from other provisions of this agreement.

La Crosse County

Mayo Clinic Health System – La Crosse

By: _____
Monica Kruse
County Board Chair

By: _____

Date: _____

Date: _____



LA CROSSE COUNTY

Joseph Langeberg, PE
Highway Commissioner

Keith Back
Assistant Commissioner

Jay Anderson
Highway Engineer

Highway Department
301 Carlson Road ~ West Salem, Wisconsin 54669-9332
(608) 786-3810 Fax (608) 786-3816
www.lacrossecounty.org

Leif Nelson
Patrol Superintendent

Tim Hammes
Patrol Superintendent

Catherine Tschumper
Shop Superintendent

INTEROFFICE MEMORANDUM

TO: PUBLIC WORKS AND INFRASTRUCTURE COMMITTEE

FROM: JOE LANGEBERG

SUBJECT: AUGUST 2022 MEETING EXPLANATION

DATE: 8/02/22

CC: JANE KLEKAMP, STEVE O'MALLEY, FILE

- Policy Overview for ATV
- Revision to Ordinance 7.08 adding ATV routes. The Town of Holland has requested the County add the following County Roadways to the routes listed in the ordinance:
 - Modify 7.08 (4)(a)13 to read "CTH V from Holmen Village Limits east to the end of CTH V"
 - CTH MH from CTH XX east to the Holmen Village Limits.
 - CTH XX from the Town of Holland limits north to State Highway 35

The Town of Holland is willing to pay the cost of the initial sign installation.
Sheriff Wolf is in support of the addition.

Included in your packet is Holland's application, map, Ordinance changes, State Statute 23.33(8), and the La Crosse County Policy Manual pg 61-62.

- Revision to Ordinance 7.04 speed limit reduction on CTH NN. The request is a speed limit reduction from 55 mph to 45 mph on County Trunk Highway NN in the Town of Greenfield and Washington. CTH NN is currently in design and has been submitted for STP-Local funded. During the design it was noticed that several curves do not meet the current 55mph speed based on their radius. As a check I reviewed the 2016 safety study and that came to the same conclusion. The speed reduction will help keep the traveling public safe. I recommend for approval.

Thank you for your time and continued support for Highway Department operations.

should be made only at a place where no obstruction prevents a quick and safe crossing. An obstruction may include, but is not limited to, impairment of view and potentially hazardous roadway conditions. See **Figure 16.1** for safe trail crossing design.

16.3 ATV Routes & Trails

La Crosse County has one ATV club that offers one well-marked, safe, and well-groomed trail of approximately 16 miles in length. There is an additional private 7-mile trail open to club members for a single or annual fee.

The La Crosse County Code of Ordinance Section 7.08 outlines specific rules and regulations for ATVs within the County, including state ATV laws adopted, the applicability of rules of the road to ATVs, operation on county property, and ATV routes.

16.3.1 ATV Trail Operations

Trails are open year-round to users. When trails are closed due poor trail conditions, it is posted on the ATV Club, Tri-County Trailblazer's social media page. To get the current trail conditions report, call (608) 399-1282.

Trail maps are available online through the ATV Club, Tri-County Trailblazer's social media pages.

16.3.2 ATV Routes on County Highways

To connect the off-road trail portions together, ATVs are permitted on county highways in the following locations:

1. Entire length of CTH A from CTH C to STH 162.
2. Entire length of CTH Q from CTH V to STH 108.
3. Entire length of CTH VV from CTH T to Jackson County.
4. Entire length of CTH AE from CTH A to CTH TA.
5. Entire length of CTH TA from CTH T to CTH A.
6. CTH T from STH 162 to CTH V.

7. CTH V from CTH TT east to the end of CTH V.
8. CTH C from STH 108 to CTH DE.

Since these routes are shared use with county highways, the following conditions apply to all operators and passengers:

1. All ATV operators shall obey posted roadway speed limits.
2. All ATV operators shall ride single file.
3. All ATVs shall operate only on the extreme right side of the paved portion of the roadway. Operation of an ATV on the shoulder, ditch, or right-of-way is prohibited and illegal.
4. Headlights and taillights must be turned on at all times.
5. All persons under the age of 18 operating or riding an ATV must wear a helmet.
6. Routes must be signed in accordance with NR 64.12 and NR 64.12(7)(c).

These regulations are enforced by local law enforcement officials.

16.3.3 Application for New ATV Route

To designate a new portion of an ATV route within La Crosse County, the municipality in which the route is located and/or an organized and established club must complete an application with the La Crosse County Highway Department. The application includes:

1. Name and sponsoring entities (municipality and/or organized and established club).
2. Input from jurisdictional law enforcement for the route's location (provide to the Public Works & Infrastructure Committee and County Board).
3. Estimated cost for trail signage, which is the applicant's responsibility to pay for the initial cost and installation of all trail signs.
4. Support or opposition from the local municipality(ies) in which the proposed route is located.

5. A map of the proposed route with logical destination and ending, and applicable connections for both routes (shared-use) and trails.
6. A review of the possibility of future connections to the overall system.
7. Considerations for amenities along the route, such as the availability of fuel, food/drink, and lodging.

16.4 Liability

It is the responsibility of snowmobile and ATV riders to be familiar with and to observe all La Crosse County Ordinances and regulations that relate to the use of recreational vehicles within the County. The Highway Department, and La Crosse County, assumes no liability as to trails, machines, or individuals.

ORDINANCE

SUBJECT: TRAFFIC CODE – ALL TERRAIN VEHICLES

COMMITTEE: PUBLIC WORKS AND INFRASTRUCTURE

FIRST CONSIDERATION: _____

FINAL CONSIDERATION: _____

ORDINANCE # 198 **PUBLICATION DATE** _____

The County Board of Supervisors of La Crosse County does ordain as follows:

**AN ORDINANCE TO AMEND S. 7.08 ENTITLED "ALL TERRAIN VEHICLES" OF THE
GENERAL CODE OF LA CROSSE COUNTY, WISCONSIN**

ANALYSIS

- This amendment creates all-terrain vehicle (ATV) routes that were requested by the Town of Holland.

INFORMATION:

County Board Rules: Governing Body s. 2.02(8) states, in part: Ordinances are drafted by the Corporation Counsel. After the ordinance has been reviewed by a standing committee, each Supervisor will be given a copy of the ordinance showing the deleted language (grayed) and the new language (underlined) and an analysis of the intent of the ordinance. After introduction to the County Board, the ordinance shall be referred to the next monthly meeting unless waived by a 2/3 vote of the Supervisors present and a public hearing may be held if requested by a Supervisor. An amendment may be introduced and debated at either the original or the referred meeting. Copies of the ordinances of the County of La Crosse in their entirety are available with Corporation Counsel, County Clerk, or www.co.la-crosse.wi.us/code/.

(rev. 3/03)

ORDINANCE #198**AN ORDINANCE TO AMEND s. 7.08 ENTITLED "ALL-TERRAIN VEHICLES" OF THE GENERAL CODE OF LA CROSSE COUNTY, WISCONSIN**

The County Board of Supervisors of the County of La Crosse does ordain as follows:

Section 1. Section 7.08 entitled "All-terrain vehicles" is amended to read:

7.08 ALL-TERRAIN VEHICLES.

(1) STATE ALL-TERRAIN/UTILITY-TERRAIN LAWS ADOPTED. For purposes of this ordinance, all references to all-terrain vehicles (ATV) shall include utility-terrain vehicles (UTV) as defined by statute. Except as otherwise specifically provided in this Chapter, the statutory provisions in section 23.33, 340 to 348, and 350 Wis. Stats., describing and defining regulations with respect to all-terrain vehicles, exclusive of any provisions therein for which the statutory penalty is a fine or term of imprisonment, are hereby adopted by reference and made part of this section as if fully set forth herein. Acts required to be performed or prohibited by such statutes are required by this section.

(2) APPLICABILITY OF RULES OF THE ROAD TO ALL-TERRAIN VEHICLES. The operator of an all-terrain vehicle upon a roadway shall, in addition to the provisions of section 23.33, Wis. Stats., also be subject to the rules of the road as provided in s. 346.02(11), Wis. Stats.

(3) OPERATION ON COUNTY PROPERTY. No person shall operate any all-terrain vehicle on lands owned by the County except where the use is authorized by posted notice or County permit.

(4) ATV ROUTES. As authorized by sec. 23.33(8)(b), Wis. Stats. and following due consideration of the recreational value to connect trail opportunities and weighted against possible dangers, public health, liability aspects, terrain involved, traffic density and history of automobile traffic, the following ATV routes have been created:

a. Routes.

1. Entire length of CTH A from CTH C to STH 162.
2. Entire length of CTH Q from CTH V to STH 108.
3. Entire length of CTH VV from CTH T to Jackson Co.
4. Entire length of CTH AE from CTH A to CTH TA.
5. Entire length of CTH TA from CTH T to CTH A.
6. Entire length of CTH T from STH 162 to STH53
7. Entire length of CTH DD from CTH T to CTH D.
8. Entire length of CTH TT from CTH T to CTH V.
9. Entire length of CTH EE from STH 162 to CTH T.
10. CTH M from CTH D to CTH Q.
11. Entire length of CTH E from STH 16 to CTH DE.
12. Entire length of CTH DE from STH 16 to CTH C.
13. CTH V from Holmen Village limits east to the end of CTH V.
14. CTH MH from CTH XX east to the Holmen Village Limits.
15. CTH XX from the Town of Holland limits north to State Highway 35
16. CTH C from STH 108 to CTH DE.

17. CTH D from CTH C to the Farmington town line.
18. CTH J from Rockland Village limits south to the Monroe County Line.
19. The entire length of CTH Y from CTH J to the Monroe County Line.
20. CTH U from Bangor Village limits east to Rockland Village limits.
21. CTH B from Bangor Village limits east to CTH J.
22. The entire length of CTH JJ from STH 162 to CTH J.

- b. Conditions. As a condition for the use of these routes, the following conditions shall apply to all operators and passengers:
1. All ATV operators shall obey posted roadway speed limits.
 2. All ATV operators shall ride single file.
 3. All ATV's shall operate only on the extreme right side of the paved portion of the roadway. Operation of an ATV on the shoulder, ditch, or right-of-way is prohibited and illegal.
 4. Headlights and taillights must be turned on at all times.
 5. All persons under the age of 18 operating or riding an ATV must wear a helmet.
 6. Routes must be signed in accordance with NR 64.12 and NR 64.12(7)(c).

(5) ENFORCEMENT. This ordinance shall be enforced by any law enforcement officer authorized to enforce the laws of the State of Wisconsin.

(6) PENALTIES. The Wisconsin ATV penalties as found in Wisconsin Statute 23.33(13) are adopted by reference.

Section 2. This Ordinance shall take effect the day after passage and publication as required by law.

LA CROSSE COUNTY

By: _____
Monica Kruse, County Board Chair

By: _____
Ginny Dankmeyer, County Clerk

PASSED:
PUBLISHED:

7.08 ALL-TERRAIN VEHICLES.

(1) STATE ALL-TERRAIN/UTILITY-TERRAIN LAWS ADOPTED. For purposes of this ordinance, all references to all-terrain vehicles (ATV) shall include utility-terrain vehicles (UTV) as defined by statute. Except as otherwise specifically provided in this Chapter, the statutory provisions in section 23.33, 340 to 348, and 350 Wis. Stats., describing and defining regulations with respect to all-terrain vehicles, exclusive of any provisions therein for which the statutory penalty is a fine or term of imprisonment, are hereby adopted by reference and made part of this section as if fully set forth herein. Acts required to be performed or prohibited by such statutes are required by this section.

(2) APPLICABILITY OF RULES OF THE ROAD TO ALL-TERRAIN VEHICLES. The operator of an all-terrain vehicle upon a roadway shall, in addition to the provisions of section 23.33, Wis. Stats., also be subject to the rules of the road as provided in s. 346.02(11), Wis. Stats.

(3) OPERATION ON COUNTY PROPERTY. No person shall operate any all-terrain vehicle on lands owned by the County except where the use is authorized by posted notice or County permit.

(4) ATV ROUTES. As authorized by sec. 23.33(8)(b), Wis. Stats. and following due consideration of the recreational value to connect trail opportunities and weighted against possible dangers, public health, liability aspects, terrain involved, traffic density and history of automobile traffic, the following ATV routes have been created:

a. Routes.

1. Entire length of CTH A from CTH C to STH 162.
2. Entire length of CTH Q from CTH V to STH 108.
3. Entire length of CTH VV from CTH T to Jackson Co.
4. Entire length of CTH AE from CTH A to CTH TA.
5. Entire length of CTH TA from CTH T to CTH A.
6. Entire length of CTH T from STH 162 to STH53
7. Entire length of CTH DD from CTH T to CTH D.
8. Entire length of CTH TT from CTH T to CTH V.
9. Entire length of CTH EE from STH 162 to CTH T.
10. CTH M from CTH D to CTH Q.
11. Entire length of CTH E from STH 16 to CTH DE.
12. Entire length of CTH DE from STH 16 to CTH C.
13. CTH V from CTH TT Holmen Village limits east to the end of CTH V.
14. CTH MH from CTH XX east to the Holmen Village Limits.
15. CTH XX from the Town of Holland limits north to State Highway 35
14. 16 CTH C from STH 108 to CTH DE.
15. 17 CTH D from CTH C to the Farmington town line.
16. 18 CTH J from Rockland Village limits south to the Monroe County Line.
17. 19 The entire length of CTH Y from CTH J to the Monroe County Line.
18. 20 CTH U from Bangor Village limits east to Rockland Village limits.
19. 21 CTH B from Bangor Village limits east to CTH J.
20. 22 The entire length of CTH JJ from STH 162 to CTH J.

- b. Conditions. As a condition for the use of these routes, the following conditions shall apply to all operators and passengers:
1. All ATV operators shall obey posted roadway speed limits.
 2. All ATV operators shall ride single file.
 3. All ATV's shall operate only on the extreme right side of the paved portion of the roadway. Operation of an ATV on the shoulder, ditch, or right-of-way is prohibited and illegal.
 4. Headlights and taillights must be turned on at all times.
 5. All persons under the age of 18 operating or riding an ATV must wear a helmet.
 6. Routes must be signed in accordance with NR 64.12 and NR 64.12(7)(c).

(5) ENFORCEMENT. This ordinance shall be enforced by any law enforcement officer authorized to enforce the laws of the State of Wisconsin.

(6) PENALTIES. The Wisconsin ATV penalties as found in Wisconsin Statute 23.33(13) are adopted by reference.

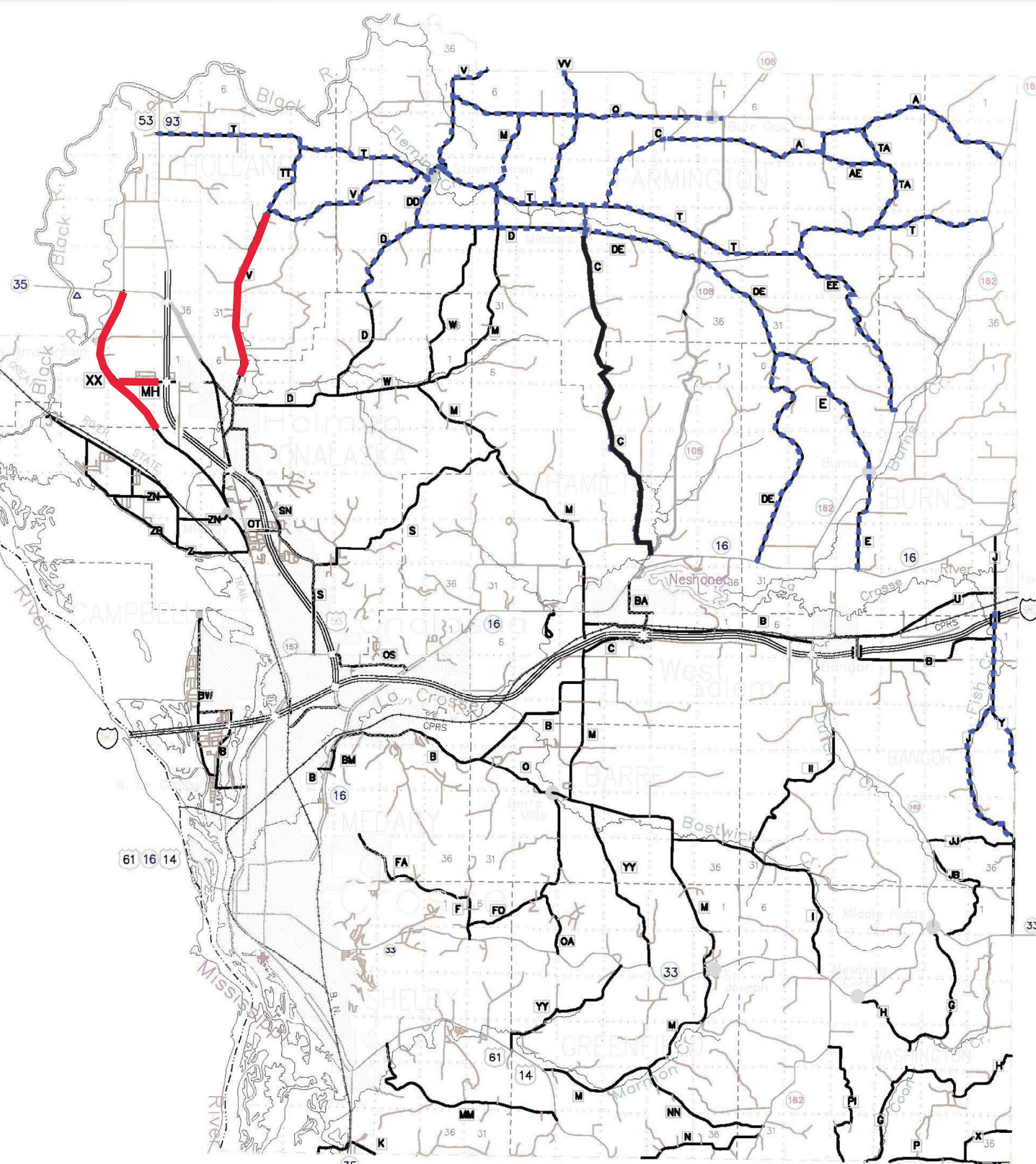
23.33 (8)

ROUTES AND TRAILS.

(a) *Department authority.* The department shall encourage and supervise a system of all-terrain vehicle routes and trails. The department may establish standards and procedures for certifying the designation of all-terrain vehicle routes and trails.

(b) *Routes.*

1. Subject to subd. 3., a town, village, city, or county may designate highways as all-terrain vehicle routes.
2. Subject to subd. 3., a town, village, city, or county may designate all highways under its jurisdiction as all-terrain vehicle routes.
3. No state trunk highway or connecting highway may be designated as an all-terrain vehicle route unless the department of transportation approves the designation.



Routes:

- 1. Entire Length of CTH A from CTH C to STH 16
- 2. Entire length of CTH Q from CTH V to STH 10
- 3. Entire length of CTH VV from CTH T to Jacks
- 4. Entire length of CTH AE from CTH A to CTH T
- 5. Entire length of CTH TA from CTH T to CTH A
- 6. Entire length of CTH T from STH 162 to STH 5
- 7. Entire length of CTH DD from CTH T to CTH D
- 8. Entire length of CTH TT from CTH T to CTH V
- 9. Entire length of CTH EE from STH 162 CTH T
- 10. CTH M from CTH D to CTH Q
- 11. Entire length of CTH E from STH 16 to CTH T
- 12. Entire length of CTH DE from STH 16 to CTH T
- 13. CTH V from CTH TT east to the end of CTH V
- 14. CTH C from STH 108 to CTH DE
- 15. CTH D from CTH C to the Farmington town
- 16. CTH J from Rockland Village limits south to Monroe County Line
- 17. The entire length of CTH Y from CTH J to th

7-21-22

11

TRAFFIC CODE 7.08(1)

penalty is a fine or term of imprisonment, are hereby adopted by reference and made part of this section as if fully set forth herein. Acts required to be performed or prohibited by such statutes are required by this section.

(2) **APPLICABILITY OF RULES OF THE ROAD TO ALL-TERRAIN VEHICLES.** The operator of an all-terrain vehicle upon a roadway shall, in addition to the provisions of section 23.33, Wis. Stats., also be subject to the rules of the road as provided in s. 346.02(11), Wis. Stats.

(3) **OPERATION ON COUNTY PROPERTY.** No person shall operate any all-terrain vehicle on lands owned by the County except where the use is authorized by posted notice or County permit.

(4) **ATV ROUTES.** As authorized by sec. 23.33(8)(b), Wis. Stats. and following due consideration of the recreational value to connect trail opportunities and weighted against possible dangers, public health, liability aspects, terrain involved, traffic density and history of automobile traffic, the following ATV routes have been created:

a. Routes.

1. Entire length of CTH A from CTH C to STH 162.
2. Entire length of CTH Q from CTH V to STH 108.
3. Entire length of CTH VV from CTH T to Jackson Co.
4. Entire length of CTH AE from CTH A to CTH TA.
5. Entire length of CTH TA from CTH T to CTH A.
6. Entire length of CTH T from STH 162 to STH53
7. Entire length of CTH DD from CTH T to CTH D.
8. Entire length of CTH TT from CTH T to CTH V.
9. Entire length of CTH EE from STH 162 to CTH T.
10. CTH M from CTH D to CTH Q.
11. Entire length of CTH E from STH 16 to CTH DE.
12. Entire length of CTH DE from STH 16 to CTH C.
13. CTH V from ~~CTH T~~ east to the end of CTH V. *Holmen Village limits*
14. CTH C from STH 108 to CTH DE.
15. CTH D from CTH C to the Farmington town line.
16. CTH J from Rockland Village limits south to the Monroe County Line.
17. The entire length of CTH Y from CTH J to the Monroe County Line.
18. CTH U from Bangor Village limits east to Rockland Village limits.
19. CTH B from Bangor Village limits east to CTH J.
20. The entire length of CTH JJ from STH 162 to CTH J.

*

b. Conditions. As a condition for the use of these routes, the following conditions shall apply to all operators and passengers:

1. All ATV operators shall obey posted roadway speed limits.
2. All ATV operators shall ride single file.
3. All ATV's shall operate only on the extreme right side of the paved portion of the roadway. Operation of an ATV on the shoulder, ditch, or right-of-way is prohibited and illegal.
4. Headlights and taillights must be turned on at all times.
5. All persons under the age of 18 operating or riding an ATV must wear a helmet.
6. Routes must be signed in accordance with NR 64.12 and NR 64.12(7)(c).

(5) **ENFORCEMENT.** This ordinance shall be enforced by any law enforcement officer authorized to enforce the laws of the State of Wisconsin.

LA CROSSE COUNTY 5/22

* 21 CTH MH from CTH XX east to Holmen village limits

* 22 CTH XX from Holland To limits north to STH 35

La Crosse County Highway Department ATV Route Review Policy and Checklist

1 Sponsoring entities must be municipalities and/or organized and established clubs.

Name of Sponsor: Town of Holland

2 Input from jurisdictional Law Enforcement for the route's location must always be sought and provided to Committee and County Board.

Local Law Enforcement Agency: LaCrosse County Sheriff

Support: Oppose:

3 The requesting entity shall be responsible for the initial cost for purchase and installation of all signage.

Signage Cost Estimate: \$2,500

4 The local Municipality must be contacted for input on the proposed route.

Municipality: Town of Holland

Support: Oppose:

Municipality: _____

Support: Oppose:

Municipality: _____

Support: Oppose:

5 The route should have a logical destination and ending. A route map is required with all applicable connections, both routes and trails.

Map Attached: Yes No

6 The possibility of future connection to the overall system should be reviewed.

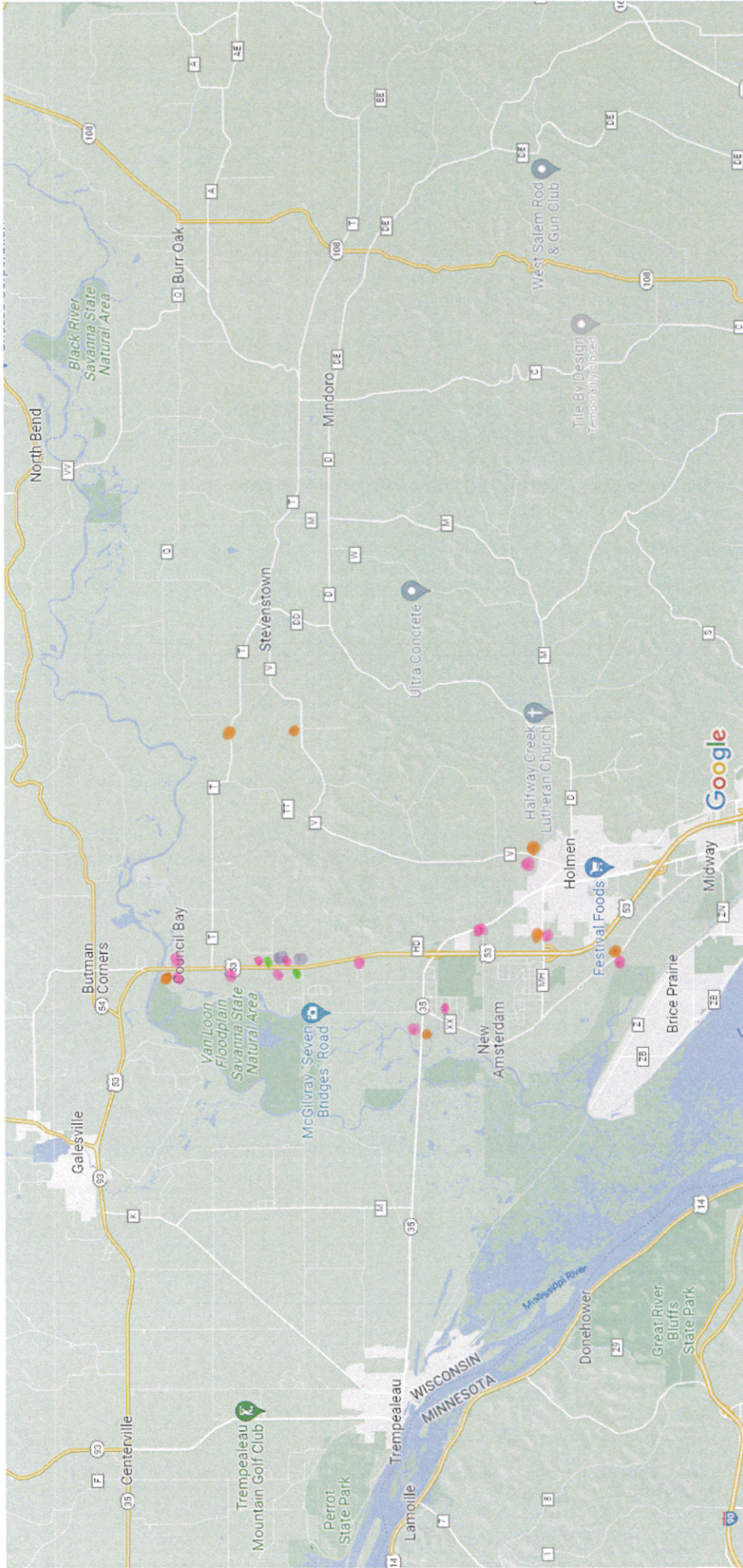
Future Possible Connections Mapped: Yes No





X 7 Consideration should be given to amenities along a route that is opened, i.e. the availability of safe travel to fueling.

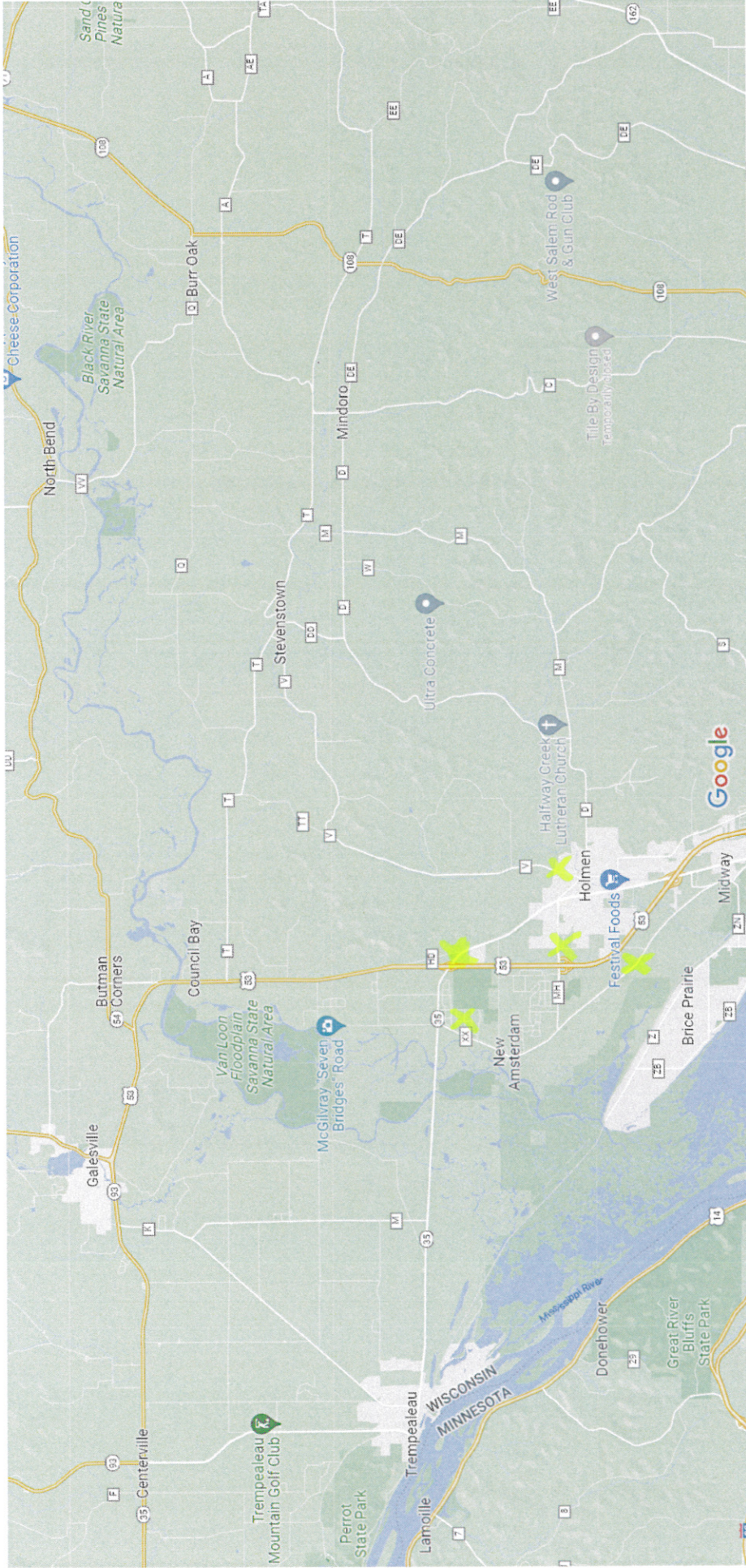
Amenities:

- a. Restaurant - Dragoon's Castle Mound
- b. Entertainment - Dragoon's Golf
- c. School - Holmen High School
- d. Multiple Town Parks
- e. McGilvray Bridges Trail
- f. Amsterdam Prairie MVC
- g. Holland Sand Prairie
- h. _____
- i. _____
- j. _____

Google Maps ATV Signage



-  No ATV route
-  Town ATV sign (entering Town)
-  Shared Trail
-  Arrow Signs



X Possible future connections
with Village of Holmen
or Town of Onalaska

ORDINANCE

SUBJECT: TRAFFIC CODE – SPEED LIMITS

COMMITTEE: PUBLIC WORKS AND INFRASTRUCTURE

FIRST CONSIDERATION: _____

FINAL CONSIDERATION: _____

ORDINANCE # 197 **PUBLICATION DATE** _____

The County Board of Supervisors of La Crosse County does ordain as follows:

**AN ORDINANCE TO AMEND S. 7.04(5) ENTITLED "SPEED LIMITS" OF THE
GENERAL CODE OF LA CROSSE COUNTY, WISCONSIN**

ANALYSIS

- Speed limit reduction from 55 mph to 45 mph on County Trunk Highway NN in the Town of Greenfield and Washington

INFORMATION:

County Board Rules: Governing Body s. 2.02(8) states, in part: Ordinances are drafted by the Corporation Counsel. After the ordinance has been reviewed by a standing committee, each Supervisor will be given a copy of the ordinance showing the deleted language (grayed) and the new language (underlined) and an analysis of the intent of the ordinance. After introduction to the County Board, the ordinance shall be referred to the next monthly meeting unless waived by a 2/3 vote of the Supervisors present and a public hearing may be held if requested by a Supervisor. An amendment may be introduced and debated at either the original or the referred meeting. Copies of the ordinances of the County of La Crosse in their entirety are available with Corporation Counsel, County Clerk, or www.co.la-crosse.wi.us/code/.

(rev. 3/03)

ORDINANCE #197**AN ORDINANCE TO AMEND s. 7.04(5) ENTITLED "SPEED LIMITS" OF THE
GENERAL CODE OF LA CROSSE COUNTY, WISCONSIN**

The County Board of Supervisors of the County of La Crosse does ordain as follows:

Section 1. Section 7.04(5) entitled "Speed Limits" is amended to read:

7.04 SPEED LIMITS.

7.04 SPEED LIMITS.

(5) 45 MILES PER HOUR. The speed limit on the following streets or portion of streets shall be 45 m.p.h.:

- (a) County Trunk "B" from a point .04 miles West of Wolf Ridge Ct to a point .15 miles East of CTH "O"
- (b) County Trunk "D" from a point .17 miles East of 2nd Ave to a point .04 miles East of Granum St
- (c) County Trunk "F" from a point .07 miles East of Trailer Park to a point .22 miles West of Nolop Rd
- (d) County Trunk "M" from a point .48 miles North of Russlan Coulee Rd to a point .14 miles South of CTH "O"
- (e) County Trunk "M" from CTH "O" to a point .02 miles North of Logging Rd
- (f) County Trunk "M" from STH 16 to a point .12 miles South of Hidden Valley Rd
- (g) County Trunk "MM" from a point .59 miles East of Trailer Park to STH 14
- (h) County Trunk "O" from CTH "B" to a point .02 miles West of Fox Hollow Dr
- (i) County Trunk "OA" from a point .14 miles South of Drectrah Rd to CTH "O"
- (j) County Trunk "OT" from CTH "SN" to a point .10 miles South of Corporate Dr
- (k) County Trunk "V" from a point .21 miles North of Juniper Ln to a point .27 miles North of Keppel Rd
- (l) County Trunk "XX" from a point .22 miles North of old NA to STH 35
- (m) County Trunk "YY" from a point 1.35 miles South of CTH "M"

to CTH "M"

- (n) County Trunk "Z" from Dump Turnaround to a point .20 miles West of Forest Dr
- (o) County Trunk "Z" from CTH "ZM" to a point .08 miles West of CTH "ZM"
- (p) County Trunk "Z" from CTH "ZB" to a point .20 miles east of Elm Drive
- (q) County Trunk "NN" from CTH "M" to STH 162

Section 2. This Ordinance shall take effect the day after passage and publication as required by law.

LA CROSSE COUNTY

By: _____
Monica Kruse, County Board Chair

By: _____
Ginny Dankmeyer, County Clerk

PASSED:
PUBLISHED:

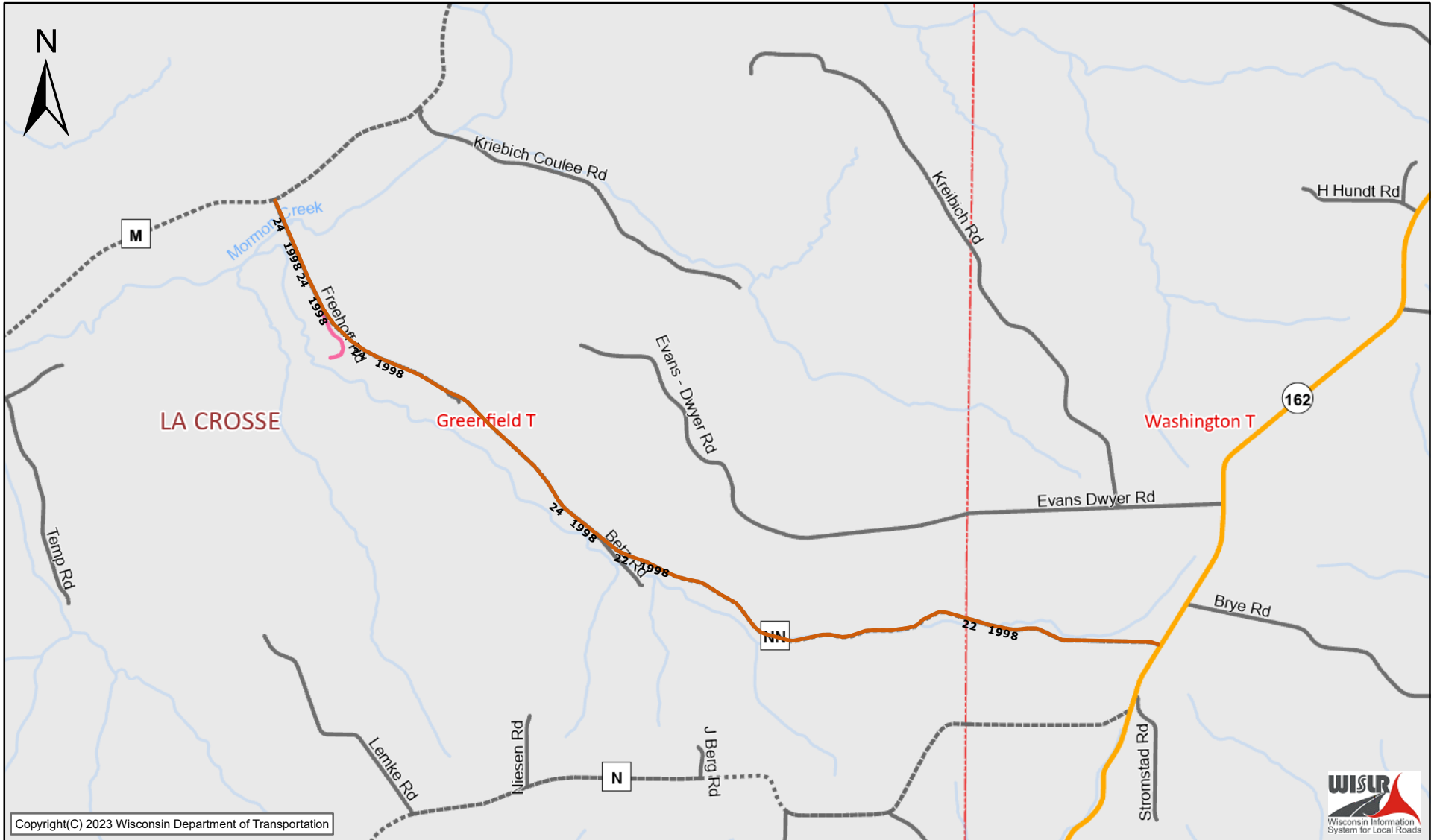
7.04 SPEED LIMITS.

7.04 SPEED LIMITS.

(5) 45 MILES PER HOUR. The speed limit on the following streets or portion of streets shall be 45 m.p.h.:

- (a) County Trunk "B" from a point .04 miles West of Wolf Ridge Ct to a point .15 miles East of CTH "O"
- (b) County Trunk "D" from a point .17 miles East of 2nd Ave to a point .04 miles East of Granum St
- (c) County Trunk "F" from a point .07 miles East of Trailer Park to a point .22 miles West of Nolop Rd
- (d) County Trunk "M" from a point .48 miles North of Russlan Coulee Rd to a point .14 miles South of CTH "O"
- (e) County Trunk "M" from CTH "O" to a point .02 miles North of Logging Rd
- (f) County Trunk "M" from STH 16 to a point .12 miles South of Hidden Valley Rd
- (g) County Trunk "MM" from a point .59 miles East of Trailer Park to STH 14
- (h) County Trunk "O" from CTH "B" to a point .02 miles West of Fox Hollow Dr
- (i) County Trunk "OA" from a point .14 miles South of Drectrah Rd to CTH "O"
- (j) County Trunk "OT" from CTH "SN" to a point .10 miles South of Corporate Dr
- (k) County Trunk "V" from a point .21 miles North of Juniper Ln to a point .27 miles North of Keppel Rd
- (l) County Trunk "XX" from a point .22 miles North of old NA to STH 35
- (m) County Trunk "YY" from a point 1.35 miles South of CTH "M" to CTH "M"
- (n) County Trunk "Z" from Dump Turnaround to a point .20 miles West of Forest Dr
- (o) County Trunk "Z" from CTH "ZM" to a point .08 miles West of CTH "ZM"
- (p) County Trunk "Z" from CTH "ZB" to a point .20 miles east of Elm Drive
- (q) County Trunk "NN" from CTH "M" to STH 162

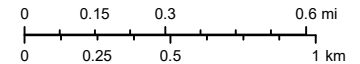
WISLR Map



Copyright(C) 2023 Wisconsin Department of Transportation



The information contained in this data set and information produced from this dataset were created for the official use of the Wisconsin Department of Transportation (WisDOT). Any other use while not prohibited, is the sole responsibility of the user. WisDOT expressly disclaims all liability regarding fitness of use of the information for other than official WisDOT business. Map created on July 25, 2022



wislr-fl2

- | | | | | |
|----------------------------|---------------|---------------------|-----------------------|------------------------------|
| USH Highway | Connector | County Roads | Local Roads | Cities/Villages/Towns |
| 70 HMAC | Frontage Road | County Trunk Hwy | Municipal/Local Roads | City |
| Railroads | Wayside | County Forest Roads | Ineligible Roads | Village |
| State Trunk Network | Rest Area | Other County Roads | Rivers | Town |
| Interstate Highway | On-Off Ramp | Weigh Station | Lakes | Counties |

7-25-22 #7e
//

TRAFFIC CODE 7.03(3)(bb)

- (bb) County Trunk "FA" from a County Trunk "F" to a point 1.69 miles north at the termini.

- (4) 40 MILES PER HOUR. The speed limit on the following streets or portions of streets shall be 40 m.p.h.:
 - (a) County Trunk "B" from Gillette St at La Crosse City Limit to STH 16
 - (b) County Trunk "OT" from CTH "XX" to STH 35
 - (c) County Trunk "C" from a point 0.2 miles south of CTH "Q" to .01 miles west of McIntosh Road

- (5) 45 MILES PER HOUR. The speed limit on the following streets or portion of streets shall be 45 m.p.h.:
 - (a) County Trunk "B" from a point .04 miles West of Wolf Ridge Ct to a point .15 miles East of CTH "O"
 - (b) County Trunk "D" from a point .17 miles East of 2nd Ave to a point .04 miles East of Granum St
 - (c) County Trunk "F" from a point .07 miles East of Trailer Park to a point .22 miles West of Nolop Rd
 - (d) County Trunk "M" from a point .48 miles North of Russlan Coulee Rd to a point .14 miles South of CTH "O"
 - (e) County Trunk "M" from CTH "O" to a point .02 miles North of Logging Rd
 - (f) County Trunk "M" from STH 16 to a point .12 miles South of Hidden Valley Rd
 - (g) County Trunk "MM" from a point .59 miles East of Trailer Park to STH 14
 - (h) County Trunk "O" from CTH "B" to a point .02 miles West of Fox Hollow Dr
 - (i) County Trunk "OA" from a point .14 miles South of Drectrah Rd to CTH "O"
 - (j) County Trunk "OT" from CTH "SN" to a point .10 miles South of Corporate Dr
 - (k) County Trunk "V" from a point .21 miles North of Juniper Ln to a point .27 miles North of Keppel Rd
 - (l) County Trunk "XX" from a point .22 miles North of old NA to STH 35

* (9) County Trunk "NN" from CTH "M" to STH 16?

TRAFFIC CODE 7.05(m)

- (m) County Trunk "YY" from a point 1.35 miles South of CTH "M" to CTH "M"
- (n) County Trunk "Z" from Dump Turnaround to a point .20 miles West of Forest Dr
- (o) County Trunk "Z" from CTH "ZM" to a point .08 miles West of CTH "ZM"
- (p) County Trunk "Z" from CTH "ZB" to a point .20 miles east of Elm Drive
- * (6) 50 MILES PER HOUR. The speed limit on the following streets or portions of streets shall be 50 m.p.h.:
 - (a) County Trunk "M" from a point .12 miles South of Hidden Valley Rd to a point .16 miles North of Southern Rd
 - (b) County Trunk "XX" from CHT "OT" to a point 0.04 miles North of Remus Rd
 - (c) County Trunk "ZN" from CTH "Z" to 0.9 miles east of CTH "Z"

(7) Speed limits on park and campground roads shall be posted as authorized by the Facilities Department.

(8) TEMPORARY SPEED LIMITS IN CONSTRUCTION ZONES.

(a) Pursuant to s. 349.11(10), Stats., the La Crosse County Highway Commissioner or his/her designee, may impose temporary speed limits for the safety of highway construction and maintenance workers, pedestrians and highway users, if the highway is being constructed, reconstructed, maintained or repaired and the highway is under the jurisdiction of the county or any state trunk highway upon which the county performs maintenance pursuant to s. 84.07, Stats.

(b) Such temporary speed limits shall be posted for the duration of the construction, reconstruction, maintenance or repair period and may be posted with signs on portable supports in accordance with state regulations.

7.05 SNOWMOBILES.

(1) STATE SNOWMOBILE LAWS ADOPTED. Except as otherwise specifically provided in this Chapter all provisions of Ch. 350, Wis. Stats., describing and defining regulations with respect to snowmobiles for which the penalty is a forfeiture only, including penalties to be imposed and procedure for prosecution, are hereby adopted and by reference made a part of this Chapter as if fully set forth herein. Any act required to be performed or prohibited in any statute incorporated herein by reference is required or prohibited by this Chapter.

(2) APPLICABILITY OF RULES OF THE ROAD TO SNOWMOBILES. The operator of a snowmobile upon a roadway shall in addition to the provisions of Ch. 350 be subject to the rules of the road as listed in s. 346.02 (10), Wis. Stats.

(3) ENFORCEMENT. Law enforcement personnel as provided in Wis. Stat. s. 350.17(1) or the County Facilities Director, or his or her designee, shall enforce the provisions of this section.