

REPORT OF THE PLANNING, RESOURCES AND DEVELOPMENT COMMITTEE
TO THE COUNTY BOARD ON A HEARING FOR A PETITION TO AMEND
THE LA CROSSE COUNTY ZONING ORDINANCE

TO THE COUNTY BOARD OF SUPERVISORS FOR LA CROSSE COUNTY:

The La Crosse County Planning, Resources and Development Committee, having considered
Petition No. 1858 to amend the La Crosse County Zoning Ordinance filed by:

**STEVE EIDE & MIKE BROWN, 2520 LOSEY CT, LA CROSSE, WI 54601; ACTING ON BEHALF
OF THE KNIGHTS OF COLUMBUS, N3020 STATE ROAD 16, LA CROSSE, WI 54601**

and having held a public hearing on the 3rd day of JANUARY 2011

to rezone from AGRICULTURE DISTRICT "A" to COMMERCIAL DISTRICT "B"

the following described land in the Town(s) of MEDARY

Part of the N $\frac{1}{2}$ -SE of Section 28, T16N, R7W described in tax parcels 9-1305-3 and 9-1311-0. Town of Medary.

And pursuant to s. 59.69 Wis. Stats.: the Committee did publish and receive proof of a Class II notice of the hearing; did receive receipts of mailing of the notices to the affected Town Clerk(s); did hold a public hearing to hear testimony and official correspondence; and, did receive and consider action from the affected Town Board(s). The Committee, under s. 59.69(5)(e)4, Wis. Stats., has the authority to approve the petition as submitted; to disapprove of the petition; or, to modify and approve the petition. Having considered the entire record the Committee's recommendation is to: **APPROVE**

By a vote of 4 in favor (2 opposed - Mach and Pedretti) and (1 excused - Keil) the Committee recommends approval of this rezone to the Commercial District "B".

(IF THIS PETITION IS APPROVED AS A CONDITIONAL ZONING, DEED RESTRICTIONS MUST BE RECORDED BEFORE ZONING TAKES EFFECT.)

Dated this 12th day of JANUARY 2011

ZONING, PLANNING AND LAND INFORMATION DEPARTMENT

BY *Jeff Bluske*
Jeff Bluske, Director

LA CROSSE COUNTY PLANNING, RESOURCES AND DEVELOPMENT COMMITTEE

BY *Donald Meyer*
Donald Meyer, Chair

The County Board, under s. 59.69(5)(e)5 Wis. Stats., has the authority to effectuate the petition by ordinance or to disapprove it. The County Board took the following action this 20th day of JANUARY, 2011

Approved the petition as submitted, becomes an ordinance.

Approved the petition with amendments/conditions, becomes an ordinance, after recording conditions.

Denied the petition, (no ordinance is adopted)

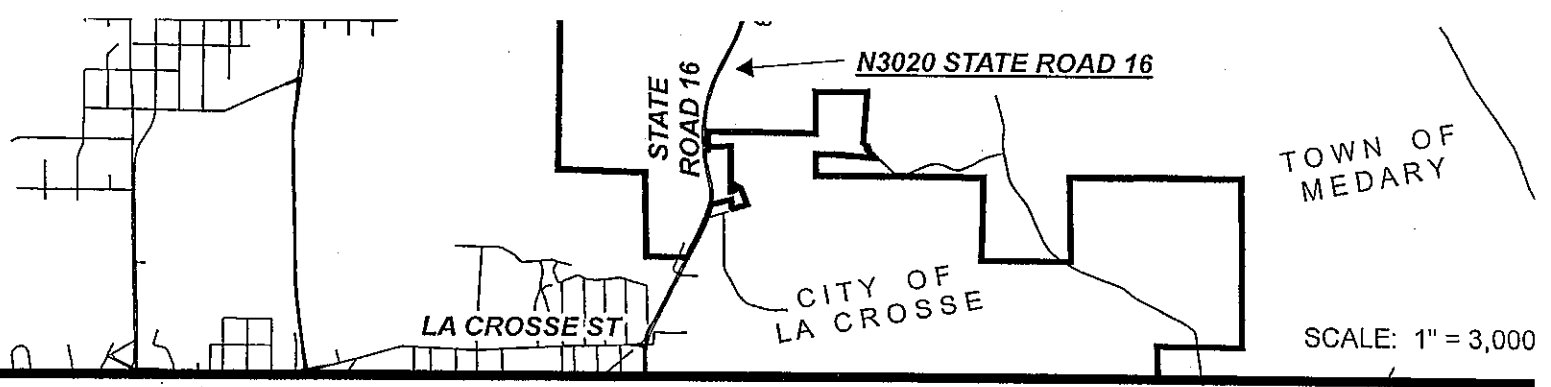
Denied the petition with amendments/conditions, (no ordinance is adopted)

Refused to deny the petition with rereferral, (no ordinance is adopted unless reported out with approval)

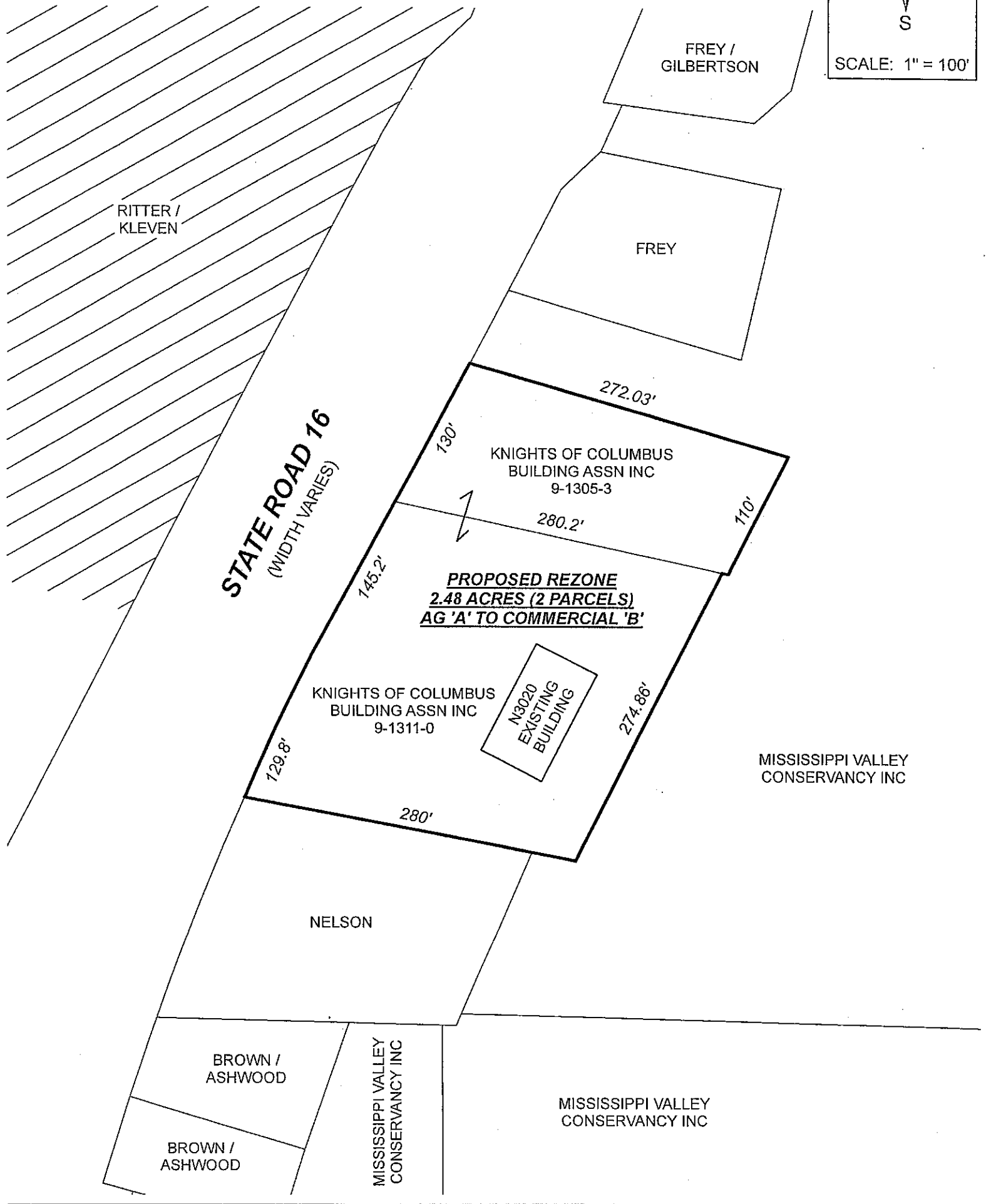
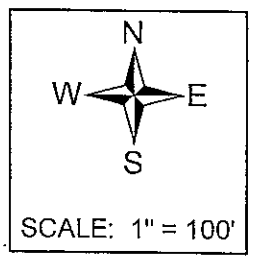
STATE OF WISCONSIN
COUNTY OF LA CROSSE

I, Ginny Dankmeyer, Chief Deputy County Clerk of La Crosse County do hereby certify that this document is a true and correct copy of the original zoning ordinance required by law to be in my custody and which the County Board of Supervisors of La Crosse County approved at a meeting held on the 20th day of January, 2011.

Ginny Dankmeyer
Ginny Dankmeyer, La Crosse Chief Deputy County Clerk



NOTE: HATCHED PORTION SHOWN HEREON IS ZONED COMMERCIAL DISTRICT 'B'. ALL OTHER AREAS ARE ZONED AGRICULTURAL DISTRICT 'A'.



ZONING PETITION NO. 1858

PART OF THE N1/2-SE OF SECTION 28, T16N, R7W
TOWN OF MEDARY

STEVE EIDE & MIKE BROWN OBO KNIGHTS OF COLUMBUS BUILDING ASSN INC