

**ORDINANCE**

**SUBJECT:** FUTURE LAND USE MAP

**COMMITTEE:** Planning, Resources & Development Committee

**FIRST CONSIDERATION:** July 15, 2010

**SECOND CONSIDERATION:** \_\_\_\_\_

**FINAL CONSIDERATION:** August 19, 2010

**ORDINANCE #** 82 - 8/10 **PUBLICATION DATE** August 31, 2010

**The County Board of Supervisors of La Crosse County does ordain as follows:**

**AN ORDINANCE TO AMEND THE "FUTURE LAND USE MAP" INCORPORATED AS PART OF S. 31.03(4) OF THE GENERAL CODE OF LA CROSSE COUNTY, WISCONSIN**

\*\*\*\*\*

**ANALYSIS**

The Future Land Use Map that was incorporated into the La Crosse County Comprehensive Plan (s. 31.03(4) of the Code) is amended to include the present future land use recommendations of the following municipalities that have completed their comprehensive plans: Town of Washington, Town of Medary, Town of Barre, Town of Greenfield, Town of Bangor, Town of Hamilton, Town of Farmington, and Town of Onalaska. Exhibit A attached to this ordinance incorporates the land use plans that have been adopted by these municipalities and replaces the map contained on p. 113 of the County Comprehensive Plan. A copy of Exhibit A is available in the County Clerk's Office and on the County website: <http://www.co.la-crosse.wi.us/ProposedOrd/index.htm>

\*\*\*\*\*

**INFORMATION:**

County Board Rules: Governing Body s. 2.02(8) states, in part: Ordinances are drafted by the Corporation Counsel. After the ordinance has been reviewed by a standing committee, each Supervisor will be given a copy of the ordinance showing the deleted language (grayed) and the new language (underlined) and an analysis of the intent of the ordinance. After introduction to the County Board, the ordinance shall be referred to the next monthly meeting unless waived by a 2/3 vote of the Supervisors present and a public hearing may be held if requested by a Supervisor. An amendment may be introduced and debated at either the original or the referred meeting. Copies of the ordinances of the County of La Crosse in their entirety are available with Corporation Counsel, County Clerk, or [www.co.la-crosse.wi.us/code/](http://www.co.la-crosse.wi.us/code/).

(rev. 3/03)

ORDINANCE 82 - 8/10

**AN ORDINANCE TO AMEND THE "FUTURE LAND USE MAP"  
INCORPORATED AS PART OF S. 31.03(4)  
OF THE GENERAL CODE OF LA CROSSE COUNTY, WISCONSIN**

The County Board of Supervisors of the County of La Crosse does ordain as follows:

**Section 1.** The "Future Land Use Map" which is included as part of the La Crosse County, Wisconsin Comprehensive Plan 2007-2027 in Section 31.03(4) is amended as follows:

Exhibit A that is attached hereto shall be incorporated into the Comprehensive Plan as the official Future Land Use Map in place of the map currently on page 113 of Chapter 31.

**Section 2.** This Ordinance shall take effect the day after passage and publication.

Dated this 19<sup>TH</sup> day of AUGUST, 2010.

LA CROSSE COUNTY

By: 

Steve Doyle, County Board Chair

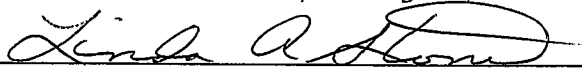
By: 

Linda Stone, County Clerk

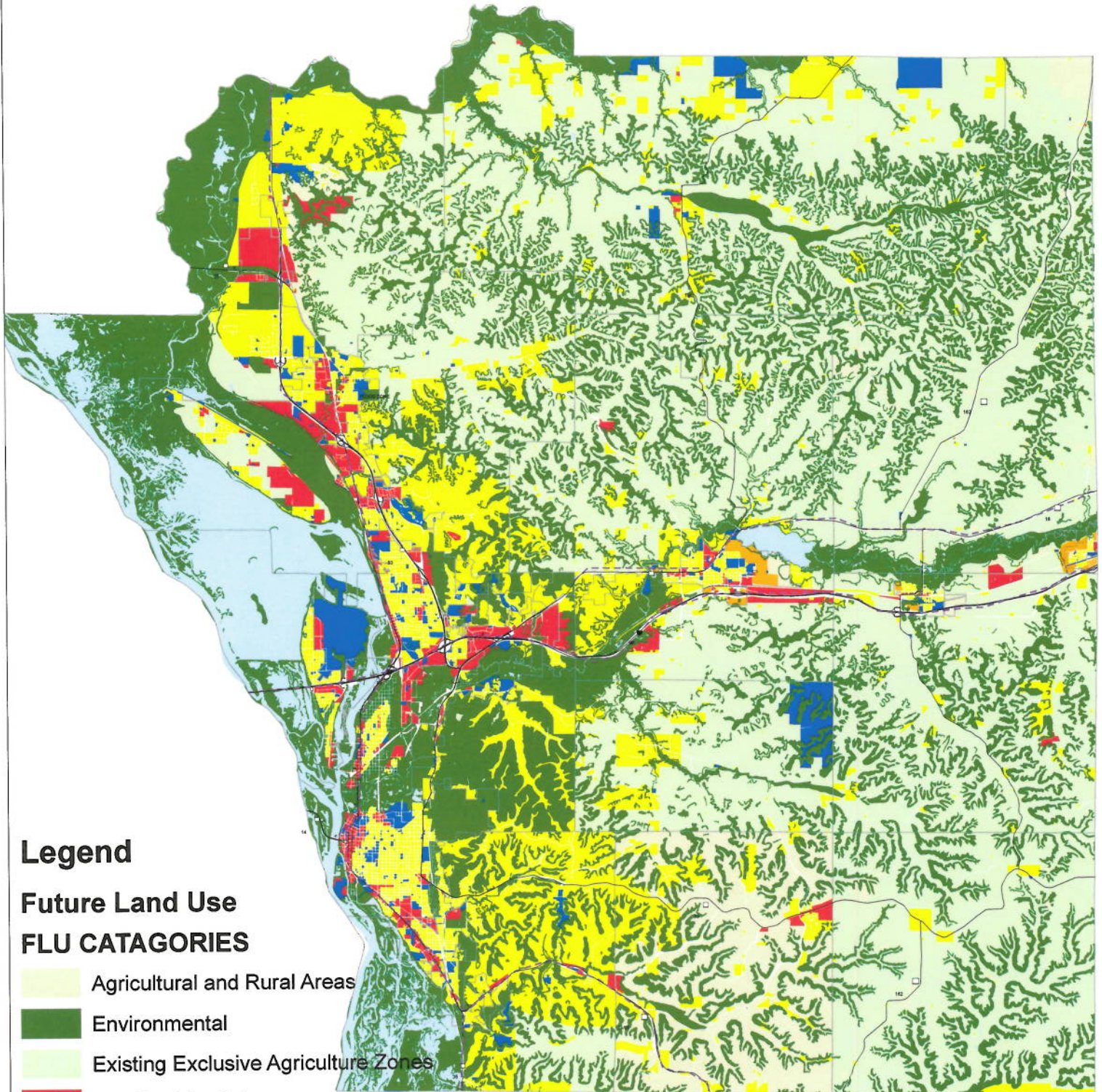
PASSED: 8/19/10  
PUBLISHED: 8/31/10

STATE OF WISCONSIN  
COUNTY OF LA CROSSE

I, Linda A. Stone, County Clerk of La Crosse County do hereby certify that this document is a true and correct copy of the original ordinance required by law to be in my custody and which the County Board of Supervisors of La Crosse County adopted at a meeting held on the 19th day of August, 2010.

  
Linda A. Stone, La Crosse County Clerk

# Future Land Use Map



## Legend

### Future Land Use FLU CATEGORIES

-  Agricultural and Rural Areas
-  Environmental
-  Existing Exclusive Agriculture Zones
-  Non-Residential
-  Public-Institutional
-  Residential
-  Planned Growth Areas
-  Water
-  Corridor Planning and Design Districts

EXHIBIT A

