

REPORT OF THE PLANNING, RESOURCES AND DEVELOPMENT COMMITTEE TO THE COUNTY BOARD
ON A HEARING FOR A PETITION TO AMEND THE LA CROSSE COUNTY ZONING ORDINANCE

TO THE COUNTY BOARD OF SUPERVISORS FOR LA CROSSE COUNTY:

The La Crosse County Planning, Resources and Development Committee, having considered

Petition No. 1792 To amend the La Crosse County Zoning Ordinance filed by:

DAVE HERLITZKE FOR HERLITZKE ENTERPRISES LLC, 2131 MARKET ST LA CROSSE WI 54601 OBO
PAUL E KUNERT W4525 US HIGHWAY 14/61 LA CROSSE WI 54601

and having held a public hearing on the 29th day of September, 2008

to rezone from COMMERCIAL DISTRICT "B" WITH CONDITIONS

to COMMERCIAL DISTRICT "B"

The following described land in the Town(s) of SHELBY

Lots 3 and 4 of Certified Survey Map No. 152 Volume 11, EXCEPT part taken for highway. Town of Shelby.

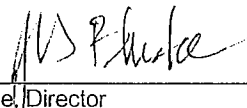
And pursuant to s. 59.69 Wis. Stats.: the Committee did publish and receive proof of a Class II notice of the hearing; did receive receipts of mailing of the notices to the affected Town Clerk(s); did hold a public hearing to hear testimony and official correspondence; and, did receive and consider action from the affected Town Board(s). The Committee, under s. 59.69(5)(e)4, Wis. Stats., has the authority to approve the petition as submitted; to disapprove of the petition; or, to modify and approve the petition. Having considered the entire record the Committee's recommendation is to: **Approve.**

By a unanimous vote, the Committee recommended approval of this rezone to Commercial District B, in order to construct commercial condominiums.

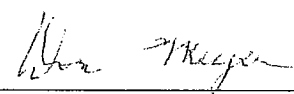
(IF THIS PETITION IS APPROVED AS A CONDITIONAL ZONING, DEED RESTRICTIONS MUST BE RECORDED BEFORE ZONING TAKES EFFECT.)

Dated this 10th day of October, 2008

ZONING, PLANNING AND LAND INFORMATION DEPARTMENT

BY 
Jeff Bluske, Director

LA CROSSE COUNTY PLANNING, RESOURCES AND DEVELOPMENT COMMITTEE

BY 
Don Meyer, Chair

The County Board, under s. 59.69(5)(e)5 Wis. Stats., has the authority to effectuate the petition by ordinance or to disapprove it. The County Board took the following action this 16 day of October 2008

Approved the petition as submitted, Becomes an ordinance.

Approved the petition with amendments/conditions, becomes an ordinance, after recording conditions.

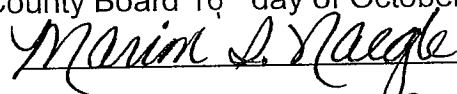
Denied the petition, (no ordinance is adopted)

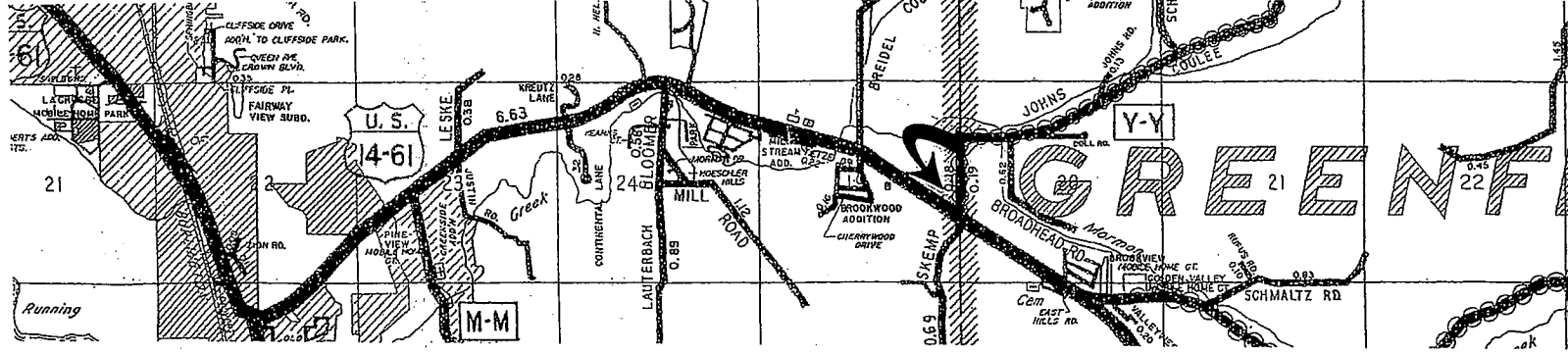
Denied the petition with amendments/conditions, (no ordinance is adopted)

Refused to deny the petition with re-referral, (no ordinance is adopted unless reported out with approval)

STATE OF WISCONSIN
COUNTY OF LA CROSSE

I, Marion I. Naegle, County Clerk of La Crosse County do hereby certify that this document is a true and correct copy of the original zoning ordinance required by law to be in my custody and which the County Board 16th day of October 2008.

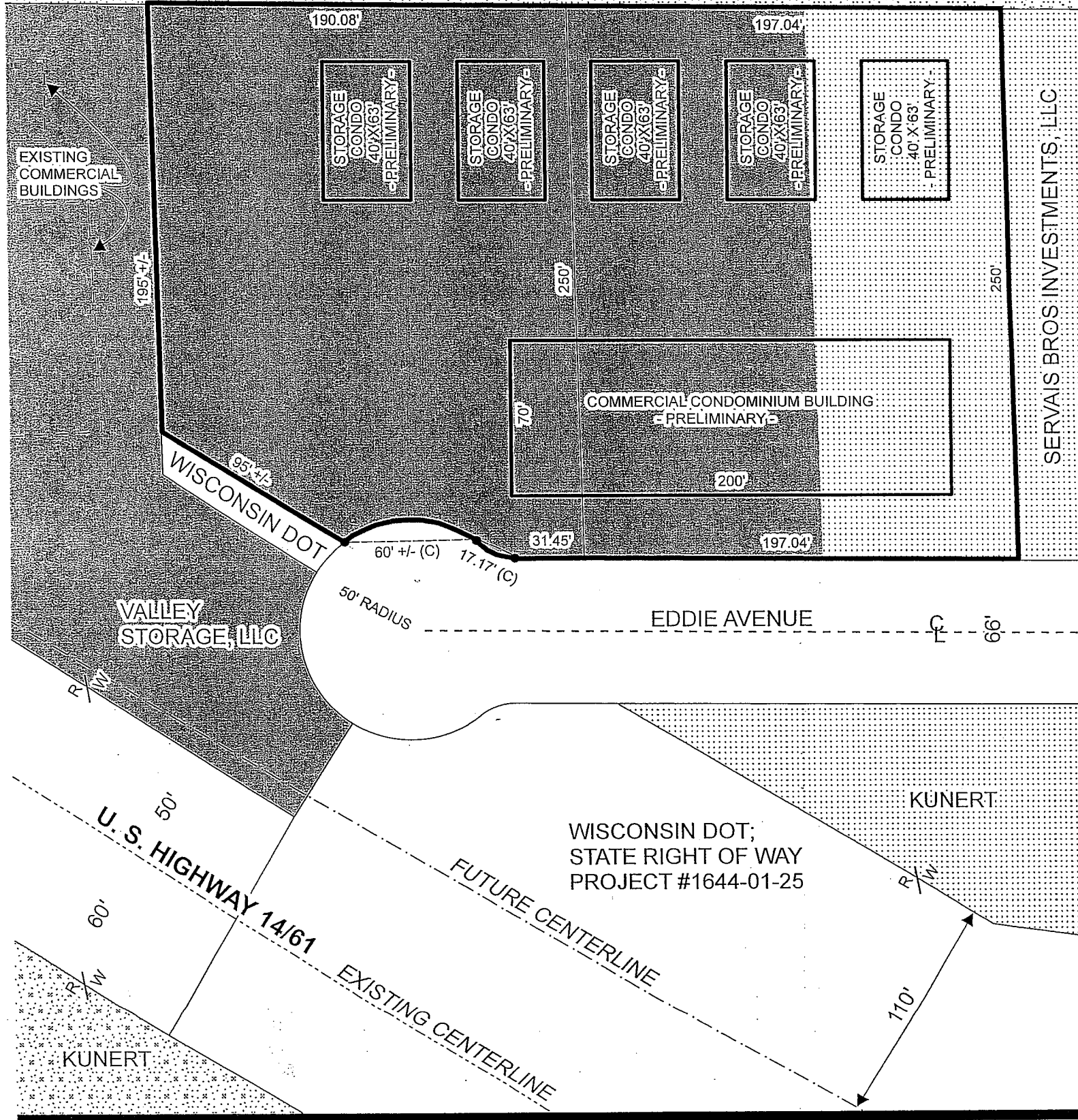

Marion I. Naegle, La Crosse County Clerk



KRAMER

	COMMERCIAL B, NO CONDITIONS
	COMMERCIAL B, CONDITIONS RECORDED
	EXCLUSIVE AG

SCALE: 1" = 60'



ZONING PETITION # 1792

CERTIFIED SURVEY MAP NO. 152, VOL. 11, LOTS 3 AND 4 EXCEPT PART
 TAKEN FOR U.S. HIGHWAY 14/61 IN DOCUMENT #1416630

TOWN OF SHELBY

APPLICANT: HERLITZKE ENTERPRISES, LLC o/b/o PAUL KUNERT